



# Trusted performance. Every day.

## Ledinaire panel gen5

The Philips Ledinaire panel Gen5 (RC065B/RC066B) range features a selection of popular off-the-shelf LED luminaires that offer Philips high quality at a competitive price. Reliable, energy-efficient and affordable, this latest generation of 600 x 600 mm, 620 x 620 mm, 300 x 1200 mm, and 600 x 1200 Ledinaire LED panel lights are designed for diffuse, comfortable lighting in a wide range of general lighting applications. Our range of Ledinaire panels lighting is also available with accessories for easy installation on different types of ceilings—just what you need.

### Benefits

- No risks, trusted performance
- Good quality, easy to use
- No confusion, easy product selection
- Innovative All-in multicolor and basic lighting control versions
- Broad range

### Features

- 3400 lm/ 3600 lm / 4100 lm: L80 at 50K hrs, L70 75K hrs and 3-year warranty
- IP20/IP40
- Connectors: white quick connectors and flywire
- Sizes: 60 x 60 mm / 62 x 62 mm / 30 x 120 mm / 60 x 120 mm
- Color rendering: CRI 80 at SDCM <5
- 3000K / 3500K / 4000K / 6500K
- PSU / PSD
- Efficacy: 120Lm/W
- All-in: 3000K, 3500K, and 4000K in one luminaire

# Ledinaire panel gen5

## Application

- Offices
- Healthcare
- Education
- Municipal buildings
- Retail

## Versions

Ledinaire Panel PSD All-in  
830\_835\_840 W60L60 OC



Ledinaire panel G5 60x120



Ledinaire panel G5 62x62



Ledinaire Panel PSU All-in  
830\_835\_840 W60L60 OC



Ledinaire Panel All-in PSU 60x60

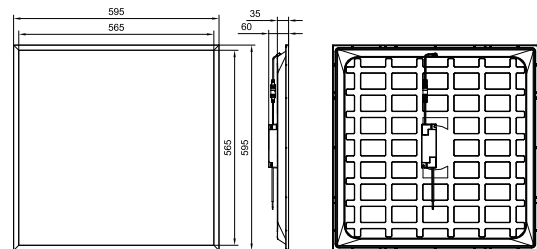
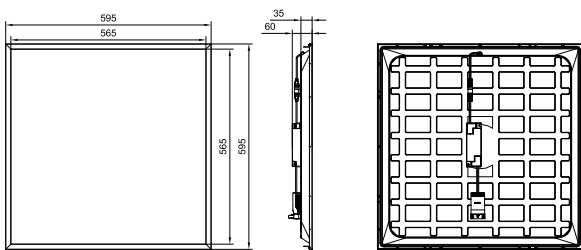
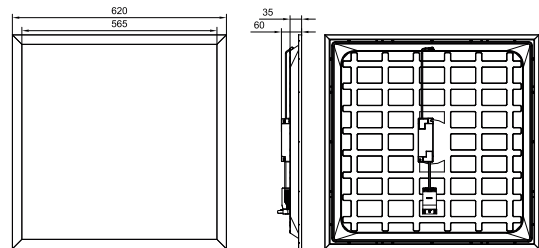
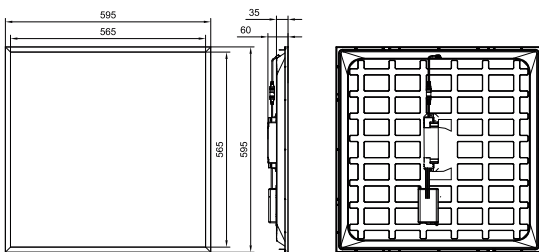
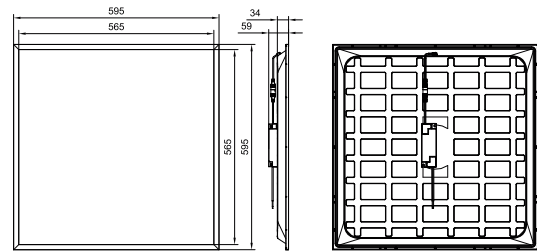
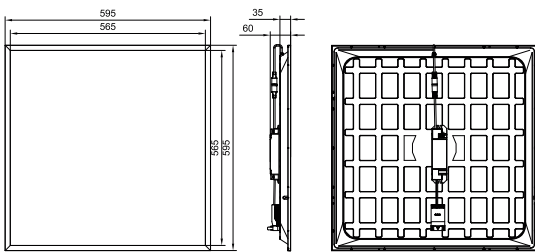
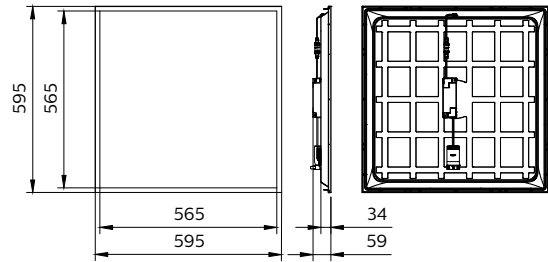
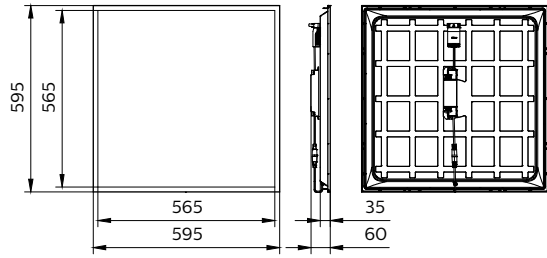


Ledinaire Panel G5 All in W30L120  
RTP



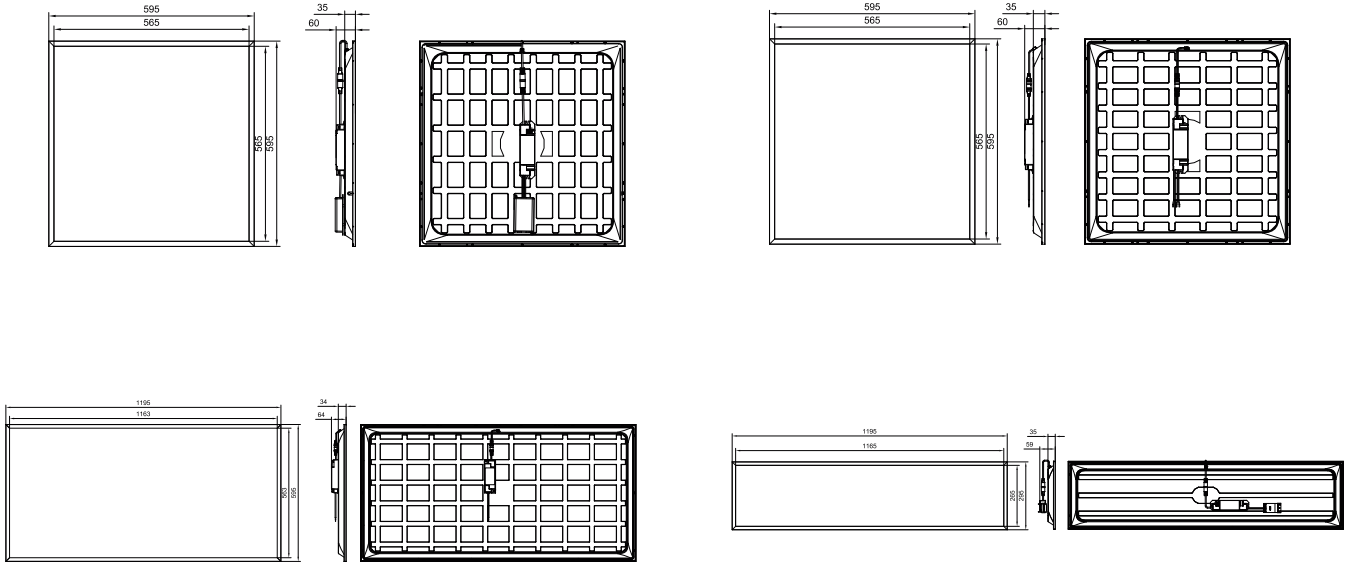
# Ledinaire panel gen5

## Dimensional drawing



# Ledinaire panel gen5

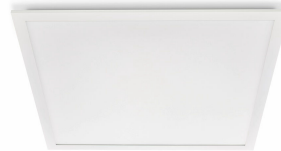
## Dimensional drawing



## Product details



Ledinaire Panel RC066B Square  
backside



Ledinaire Panel G5 RC066B-  
frontside-straight



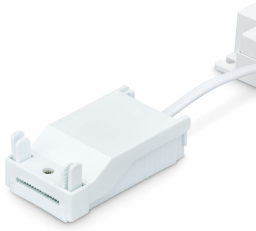
Ledinaire Panel G5 All in CCT  
Switch 3000K



Ledinaire Panel G5 Back housing  
PSU Flywire (CFW)

# Ledinaire panel gen5

## Product details



White Quick connector-closed



Panel flywires CFW + backside panel



Ledinaire Panel G5 All in CCT  
Switch PSU ON OFF Driver Open  
connector



Ledinaire Panel G5 PSD DALI  
Driver Open connector



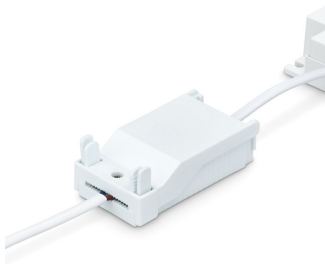
Ledinaire Panel G5 All in CCT  
Switch PSD ON OFF Driver Closed  
connector



Ledinaire Panel G5 PSD DALI  
Driver Closed connector



Ledinaire panel G5 frame and  
optical area 60x120



White Quick connector+wire-  
closed



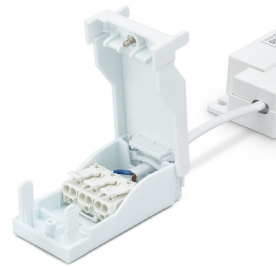
Ledinaire Panel Gen 5-RC065B  
W60L120-backside

# Ledinaire panel gen5

## Product details



White Quick connector +wire-open



White Quick connector-open



Ledinaire Panel G5 All in CCT  
Switch PSD ON OFF Driver Open  
connector



Ledinaire Panel RC065B G5  
30x120 Packaging



Panel flywires CFW



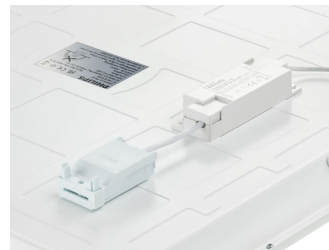
Ledinaire Panel G5 Back housing  
PSU Connector



Ledinaire Panel RC065B Square  
backside



Ledinaire Panel Gen 5-  
RC065B\_RC066B Square-  
backside-PSU driver and  
connector



Ledinaire Panel Gen 5-  
RC065B\_RC066B Square-  
backside



Ledinaire Panel RC065B G5 PSU  
30x120 Backside



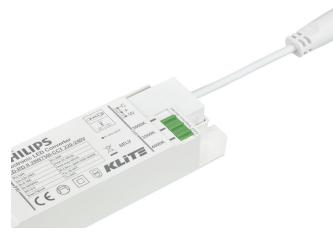
Ledinaire Panel G5 All in CCT  
Switch PSU ON OFF Driver Closed  
connector

# Ledinaire panel gen5

## Product details



Ledinaire Panel G5 All in CCT  
Switch 3500K



Ledinaire Panel G5 All in CCT  
Switch 4000K



Ledinaire Panel Gen 5-RC065B  
W60L120-backside-PSU driver  
and Flywire



Ledinaire Panel Gen 5-  
RC065B\_RC066B Square-  
backside-PSU driver and  
connector



Ledinaire panel G5 frame and  
optical area 62x62

# Ledinaire panel gen5

General Information	
Driver included	Yes
Number of gear units	1 unit
Light Technical	
Color rendering index (CRI)	>80
Luminous Efficacy (rated) (Nom)	120 lm/W
Operating and Electrical	
Protection class IEC	Safety class II
Input Voltage	220 to 240 V
Line Frequency	50 or 60 Hz
Suitable for random switching	Not applicable
Mechanical and Housing	
Housing Color	White
Mech. impact protection code	IK02
Ingress protection code	IP20/40
Emergency Operation	
Central Emergency	No
Approval and Application	
Ambient temperature range	-10 to +35 °C
CE mark	Yes
ENEC mark	-
Flammability mark	For mounting on normally flammable surfaces
Glow-wire test	Temperature 650 °C, duration 30 s
Flickering value (PstLM) - Flickering value as per EN 61000-3-3	1
Initial Performance (IEC Compliant)	
Luminous flux tolerance	-10% / +10%

## Light Technical (1/2)

Order Code	Full Product Name	All-in Type	Beam angle of light source	Correlated Color	
				Temperature (Nom)	Luminous Flux
51697799	RC065B G5 34_36S/830_40 PSD W60L60 OC SC	All-in, Multi Color Temperature	90 degree(s)	3000 K	3,400 lm
51669499	RC065B G5 60S/840 PSU 60x120 NOC TPb CFW	-	120 degree(s)	4000 K	6,000 lm
51666399	RC066B 34S/840 PSU W62L62 OC	-	90 degree(s)	4000 K	3,400 lm
51672499	RC065B G5 34_36S/830_40 PSU W60L60 OC SC	All-in, Multi Color Temperature	90 degree(s)	3000 K	3,400 lm
51673199	RC065B G5 34_36S/830_40 PSU 60x60 NOC SC	All-in, Multi Color Temperature	120 degree(s)	3000 K	3,400 lm
51651999	RC065B G5 34S/840 PSU W60L60 OC CFW	-	90 degree(s)	4000 K	3,400 lm
51652699	RC065B G5 34S/840 PSU W60L60 OC SC	-	90 degree(s)	4000 K	3,400 lm
51653399	RC065B G5 34S/865 PSU W60L60 OC CFW	-	90 degree(s)	6500 K	3,400 lm
51654099	RC065B G5 34S/840 PSU W60L60 NOC CFW	-	120 degree(s)	4000 K	3,400 lm
51655799	RC065B G5 34S/840 PSU W60L60 NOC SC	-	120 degree(s)	4000 K	3,400 lm
51656499	RC065B G5 34S/865 PSU W60L60 NOC CFW	-	120 degree(s)	6500 K	3,400 lm
51657199	RC065B G5 34S/840 PSD W60L60 OC CFW	-	90 degree(s)	4000 K	3,400 lm
51658899	RC065B G5 34S/840 PSD W60L60 OC SC	-	90 degree(s)	4000 K	3,400 lm
51659599	RC065B G5 41S/840 PSU W60L60 NOC CFW	-	120 degree(s)	4000 K	4,100 lm
51660199	RC065B G5 41S/840 PSU W60L60 OC CFW	-	90 degree(s)	4000 K	4,100 lm
51661899	RC065B G5 41S/840 PSU W60L60 NOC CFW CL	-	120 degree(s)	4000 K	4,100 lm
51662599	RC065B G5 41S/840 PSU W60L60 OC CFW CL	-	90 degree(s)	4000 K	4,100 lm
51663299	RC065B G5 34S/840 PSU W60L60 NOC CFW CL	-	120 degree(s)	4000 K	3,400 lm
51698499	RC065B G5 34_36S/830_40 PSU 30x120 OC SC	All-in, Multi Color Temperature	90 degree(s)	3000 K	3,400 lm

## Light Technical (2/2)

Order Code	Full Product Name	Optic type	Order Code	Full Product Name	Optic type
51697799	RC065B G5 34_36S/830_40 PSD W60L60 OC SC	Beam angle 90°	51672499	RC065B G5 34_36S/830_40 PSU W60L60 OC SC	Beam angle 90°
51669499	RC065B G5 60S/840 PSU 60x120 NOC TPb CFW	Beam angle 120°	51673199	RC065B G5 34_36S/830_40 PSU 60x60 NOC SC	Beam angle 120°
51666399	RC066B 34S/840 PSU W62L62 OC	Beam angle 90°	51651999	RC065B G5 34S/840 PSU W60L60 OC CFW	Beam angle 90°

## Ledinaire panel gen5

Order Code	Full Product Name	Optic type
51652699	RC065B G5 34S/840 PSU W60L60 OC SC	Beam angle 90°
51653399	RC065B G5 34S/865 PSU W60L60 OC CFW	Beam angle 90°
51654099	RC065B G5 34S/840 PSU W60L60 NOC CFW	Beam angle 120°
51655799	RC065B G5 34S/840 PSU W60L60 NOC SC	Beam angle 120°
51656499	RC065B G5 34S/865 PSU W60L60 NOC CFW	Beam angle 120°
51657199	RC065B G5 34S/840 PSD W60L60 OC CFW	Beam angle 90°
51658899	RC065B G5 34S/840 PSD W60L60 OC SC	Beam angle 90°

Order Code	Full Product Name	Optic type
51659599	RC065B G5 41S/840 PSU W60L60 NOC CFW	Beam angle 120°
51660199	RC065B G5 41S/840 PSU W60L60 OC CFW	Beam angle 90°
51661899	RC065B G5 41S/840 PSU W60L60 NOC CFW CL	Beam angle 120°
51662599	RC065B G5 41S/840 PSU W60L60 OC CFW CL	Beam angle 90°
51663299	RC065B G5 34S/840 PSU W60L60 NOC CFW CL	Beam angle 120°
51698499	RC065B G5 34_36S/830_40 PSU 30x120 OC SC	Beam angle 90°

### Operating and Electrical

Order Code	Full Product Name	Power Consumption
51697799	RC065B G5 34_36S/830_40 PSD W60L60 OC SC	28 W
51669499	RC065B G5 60S/840 PSU 60x120 NOC TPb CFW	50 W
51666399	RC066B 34S/840 PSU W62L62 OC	28 W
51672499	RC065B G5 34_36S/830_40 PSU W60L60 OC SC	28 W
51673199	RC065B G5 34_36S/830_40 PSU 60x60 NOC SC	28 W
51651999	RC065B G5 34S/840 PSU W60L60 OC CFW	28 W
51652699	RC065B G5 34S/840 PSU W60L60 OC SC	28 W
51653399	RC065B G5 34S/865 PSU W60L60 OC CFW	28 W
51654099	RC065B G5 34S/840 PSU W60L60 NOC CFW	28 W
51655799	RC065B G5 34S/840 PSU W60L60 NOC SC	28 W

Order Code	Full Product Name	Power Consumption
51656499	RC065B G5 34S/865 PSU W60L60 NOC CFW	28 W
51657199	RC065B G5 34S/840 PSD W60L60 OC CFW	28 W
51658899	RC065B G5 34S/840 PSD W60L60 OC SC	28 W
51659599	RC065B G5 41S/840 PSU W60L60 NOC CFW	34 W
51660199	RC065B G5 41S/840 PSU W60L60 OC CFW	34 W
51661899	RC065B G5 41S/840 PSU W60L60 NOC CFW CL	34 W
51662599	RC065B G5 41S/840 PSU W60L60 OC CFW CL	34 W
51663299	RC065B G5 34S/840 PSU W60L60 NOC CFW CL	28 W
51698499	RC065B G5 34_36S/830_40 PSU 30x120 OC SC	28 W

### Controls and Dimming

Order Code	Full Product Name	Dimmable	Maximum dim level
51697799	RC065B G5 34_36S/830_40 PSD W60L60 OC SC	Yes	1%
51669499	RC065B G5 60S/840 PSU 60x120 NOC TPb CFW	No	Not applicable
51666399	RC066B 34S/840 PSU W62L62 OC	No	Not applicable
51672499	RC065B G5 34_36S/830_40 PSU W60L60 OC SC	No	Not applicable
51673199	RC065B G5 34_36S/830_40 PSU 60x60 NOC SC	No	Not applicable
51651999	RC065B G5 34S/840 PSU W60L60 OC CFW	No	Not applicable
51652699	RC065B G5 34S/840 PSU W60L60 OC SC	No	Not applicable
51653399	RC065B G5 34S/865 PSU W60L60 OC CFW	No	Not applicable
51654099	RC065B G5 34S/840 PSU W60L60 NOC CFW	No	Not applicable
51655799	RC065B G5 34S/840 PSU W60L60 NOC SC	No	Not applicable

Order Code	Full Product Name	Dimmable	Maximum dim level
51656499	RC065B G5 34S/865 PSU W60L60 NOC CFW	No	Not applicable
51657199	RC065B G5 34S/840 PSD W60L60 OC CFW	Yes	1%
51658899	RC065B G5 34S/840 PSD W60L60 OC SC	Yes	1%
51659599	RC065B G5 41S/840 PSU W60L60 NOC CFW	No	Not applicable
51660199	RC065B G5 41S/840 PSU W60L60 OC CFW	No	Not applicable
51661899	RC065B G5 41S/840 PSU W60L60 NOC CFW CL	No	Not applicable
51662599	RC065B G5 41S/840 PSU W60L60 OC CFW CL	No	Not applicable
51663299	RC065B G5 34S/840 PSU W60L60 NOC CFW CL	No	Not applicable
51698499	RC065B G5 34_36S/830_40 PSU 30x120 OC SC	No	Not applicable

### Initial Performance (IEC Compliant)

Order Code	Full Product Name	Initial chromaticity
51697799	RC065B G5 34_36S/830_40 PSD W60L60 OC SC	(0.43, 0.40) SDCM ≤5 ; (0.38, 0.38) SDCM ≤5

Order Code	Full Product Name	Initial chromaticity
51669499	RC065B G5 60S/840 PSU 60x120 NOC TPb CFW	(0.38, 0.38) SDCM ≤5
51666399	RC066B 34S/840 PSU W62L62 OC	(0.38, 0.38) SDCM ≤5

## Ledinaire panel gen5

Order Code	Full Product Name	Initial chromaticity	Order Code	Full Product Name	Initial chromaticity
51672499	RC065B G5 34_36S/830_40 PSU W60L60 OC SC	(0.43, 0.40) SDCM ≤5 ; (0.38, 0.38) SDCM ≤5	51657199	RC065B G5 34S/840 PSD W60L60 OC CFW	(0.38, 0.38) SDCM ≤5
51673199	RC065B G5 34_36S/830_40 PSU 60x60 NOC SC	(0.43, 0.40) SDCM ≤5 ; (0.38, 0.38) SDCM ≤5	51658899	RC065B G5 34S/840 PSD W60L60 OC SC	(0.38, 0.38) SDCM ≤5
51651999	RC065B G5 34S/840 PSU W60L60 OC CFW	(0.38, 0.38) SDCM ≤5	51659599	RC065B G5 41S/840 PSU W60L60 NOC CFW	(0.38, 0.38) SDCM ≤5
51652699	RC065B G5 34S/840 PSU W60L60 OC SC	(0.38, 0.38) SDCM ≤5	51660199	RC065B G5 41S/840 PSU W60L60 OC CFW	(0.38, 0.38) SDCM ≤5
51653399	RC065B G5 34S/865 PSU W60L60 OC CFW	(0.31, 0.33) SDCM ≤5	51661899	RC065B G5 41S/840 PSU W60L60 NOC CFW CL	(0.38, 0.38) SDCM ≤5
51654099	RC065B G5 34S/840 PSU W60L60 NOC CFW	(0.38, 0.38) SDCM ≤5	51662599	RC065B G5 41S/840 PSU W60L60 OC CFW CL	(0.38, 0.38) SDCM ≤5
51655799	RC065B G5 34S/840 PSU W60L60 NOC SC	(0.38, 0.38) SDCM ≤5	51663299	RC065B G5 34S/840 PSU W60L60 NOC CFW CL	(0.38, 0.38) SDCM ≤5
51656499	RC065B G5 34S/865 PSU W60L60 NOC CFW	(0.31, 0.33) SDCM ≤5	51698499	RC065B G5 34_36S/830_40 PSU 30x120 OC SC	(0.43, 0.40) SDCM ≤5 ; (0.38, 0.38) SDCM ≤5

