

The new generation of energy saving T8 tube lighting

MASTER LED tube InstantFit HF T8

Philips MASTER LEDtube InstantFit T8 integrates a LED light source into a traditional fluorescent form factor. Its unique design creates a perfectly uniform visual appearance which cannot be distinguished from traditional fluorescent. Philips MASTER LEDtube InstantFit T8 is the ideal solution for customers who have higher light requirements and want to maximize value over lifetime. Full energy savings & longer lifetime result in attractive payback times and TCO benefits.

Benefits

- Reduced operational cost thanks to lower energy consumption
- Lower maintenance cost thanks to 2-3 times longer lifetime than normal fluorescent tubes
- Fastest and easiest way to upgrade existing luminaire to LED technology, with a 100%- safe installation process

MASTER LED tube InstantFit HF T8

Features

- HF compatibility: no wires to replace, no hassle changing drivers; our InstantFit solution works with High Frequency electronic ballasts, making it easy and safe for all installation methods
- Electronic Pin safety: with Philips products you can safely touch the other end-cap when installing the tube. The integrated driver is also safely isolated from touchable parts. Philips LED tubes adhere to all UL and IEC pin safety requirements
- Rotating end-caps: in many applications the pin fitting needs to be rotating. This can be a problem as LED tubes only provide directional light. Our T8 MASTER LEDtubes have rotating end-caps to allow you to rotate the tube by up to 90 degrees
- Shatterproof, passing drop test horizontally from a height of 4m on to a flat concrete according to IEC 61549.
- Enable easy implementation of HACCP without need for additional guard, supported by product level NSF certificate

Application

- The ideal solution for very demanding applications with the highest lumen output requirements while saving on energy bills: office, school, retail & industry, healthcare applications

Warnings and Safety

- NOTES: The overall energy efficiency and light distribution of any installation that uses these lamps are determined by the design of the installation.

Versions



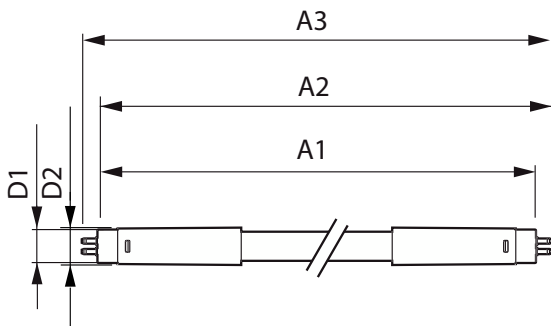
8W G13

MASTER LED tube InstantFit HF T8

Dimensional drawing



| Product | D1 | D2 | A1 | A2 | A3 |
|---------------------------------------|---------|-------|------------|------------|------------|
| MAS LEDtube HF 1200mm 14W 833 T8 FOOD | 25.6 mm | 28 mm | 1,198.1 mm | 1,205.2 mm | 1,212.3 mm |
| MAS LEDtube HF 1200mm HO 14W830 T8 | 25.8 mm | 28 mm | 1,198.2 mm | 1,205.3 mm | 1,212.4 mm |
| MAS LEDtube HF 1200mm HO 14W840 T8 | 25.8 mm | 28 mm | 1,198.2 mm | 1,205.3 mm | 1,212.4 mm |
| MAS LEDtube HF 1200mm HO 14W865 T8 | 25.8 mm | 28 mm | 1,198.2 mm | 1,205.3 mm | 1,212.4 mm |
| MAS LEDtube HF 1200mm UO 16W830 T8 | 25.8 mm | 28 mm | 1,198.2 mm | 1,205.3 mm | 1,212.4 mm |
| MAS LEDtube HF 1200mm UO 16W840 T8 | 25.8 mm | 28 mm | 1,198.2 mm | 1,205.3 mm | 1,212.4 mm |
| MAS LEDtube HF 1200mm UO 16W865 T8 | 25.8 mm | 28 mm | 1,198.2 mm | 1,205.3 mm | 1,212.4 mm |
| MAS LEDtube HF 1500mm HO 20W830 T8 | 25.8 mm | 28 mm | 1,498.8 mm | 1,505.9 mm | 1,513 mm |
| MAS LEDtube HF 1500mm HO 20W840 T8 | 25.8 mm | 28 mm | 1,498.8 mm | 1,505.9 mm | 1,513 mm |
| MAS LEDtube HF 1500mm HO 20W865 T8 | 25.8 mm | 28 mm | 1,498.8 mm | 1,505.9 mm | 1,513 mm |
| MAS LEDtube HF 1500mm UO 24W830 T8 | 25.8 mm | 28 mm | 1,498.8 mm | 1,505.9 mm | 1,513 mm |
| MAS LEDtube HF 1500mm UO 24W840 T8 | 25.8 mm | 28 mm | 1,498.8 mm | 1,505.9 mm | 1,513 mm |
| MAS LEDtube HF 1500mm UO 24W865 T8 | 25.8 mm | 28 mm | 1,498.8 mm | 1,505.9 mm | 1,513 mm |



| Product | D1 | D2 | A1 | A2 | A3 |
|----------------------------------|---------|-------|----------|----------|----------|
| MAS LEDtube HF 600mm HO 8W830 T8 | 25.8 mm | 28 mm | 588.6 mm | 595.7 mm | 602.8 mm |
| MAS LEDtube HF 600mm HO 8W840 T8 | 25.8 mm | 28 mm | 588.6 mm | 595.7 mm | 602.8 mm |
| MAS LEDtube HF 600mm HO 8W865 T8 | 25.8 mm | 28 mm | 588.6 mm | 595.7 mm | 602.8 mm |

MASTER LED tube InstantFit HF T8

| General Information | |
|---------------------------------------|-----------------|
| Switching Cycle | 50,000 |
| Light Technical | |
| Beam Angle (Nom) | 160 degree(s) |
| Color rendering index (CRI) | 80 |
| LLMF At End Of Nominal Lifetime (Nom) | 70 % |
| Operating and Electrical | |
| Starting Time (Nom) | 0.5 s |
| Temperature | |
| T-Case Maximum (Nom) | 55 °C |
| Mechanical and Housing | |
| Bulb Finish | Frosted |
| Approval and Application | |
| Ambient temperature range | -20 °C to 45 °C |

General Information

| Order Code | Full Product Name | Cap-Base | Nominal lifetime |
|--------------|---------------------------------------|-----------------------|------------------|
| 929002479402 | MAS LEDtube HF 1200mm 14W 833 T8 FOOD | G13 | 60,000 hour(s) |
| 929003553402 | MAS LEDtube HF 1200mm HO 14W830 T8 | G13 Rotatable end-cap | 75,000 hour(s) |
| 929003553502 | MAS LEDtube HF 1200mm HO 14W840 T8 | G13 Rotatable end-cap | 75,000 hour(s) |
| 929003553602 | MAS LEDtube HF 1200mm HO 14W865 T8 | G13 Rotatable end-cap | 75,000 hour(s) |
| 929003553702 | MAS LEDtube HF 1500mm HO 20W830 T8 | G13 Rotatable end-cap | 75,000 hour(s) |
| 929003553802 | MAS LEDtube HF 1500mm HO 20W840 T8 | G13 Rotatable end-cap | 75,000 hour(s) |
| 929003553902 | MAS LEDtube HF 1500mm HO 20W865 T8 | G13 Rotatable end-cap | 75,000 hour(s) |
| 929003554002 | MAS LEDtube HF 1200mm UO 16W830 T8 | G13 Rotatable end-cap | 75,000 hour(s) |
| 929003554102 | MAS LEDtube HF 1200mm UO 16W840 T8 | G13 Rotatable end-cap | 75,000 hour(s) |
| 929003554202 | MAS LEDtube HF 1200mm UO 16W865 T8 | G13 Rotatable end-cap | 75,000 hour(s) |
| 929003554302 | MAS LEDtube HF 1500mm UO 24W830 T8 | G13 Rotatable end-cap | 75,000 hour(s) |
| 929003554402 | MAS LEDtube HF 1500mm UO 24W840 T8 | G13 Rotatable end-cap | 75,000 hour(s) |
| 929003554502 | MAS LEDtube HF 1500mm UO 24W865 T8 | G13 Rotatable end-cap | 75,000 hour(s) |
| 929001393132 | MAS LEDtube HF 600mm HO 8W830 T8 | G13 Rotatable end-cap | 75,000 hour(s) |
| 929001393232 | MAS LEDtube HF 600mm HO 8W840 T8 | G13 Rotatable end-cap | 75,000 hour(s) |
| 929001393332 | MAS LEDtube HF 600mm HO 8W865 T8 | G13 Rotatable end-cap | 75,000 hour(s) |

Light Technical

| Order Code | Full Product Name | Correlated Color | | Luminous Flux |
|--------------|---------------------------------------|-------------------|------------|---------------|
| | | Temperature (Nom) | Color Code | |
| 929002479402 | MAS LEDtube HF 1200mm 14W 833 T8 FOOD | 3300 K | 833 | 1,000 lm |
| 929003553402 | MAS LEDtube HF 1200mm HO 14W830 T8 | 3000 K | 830 | 2,000 lm |
| 929003553502 | MAS LEDtube HF 1200mm HO 14W840 T8 | 4000 K | 840 | 2,100 lm |
| 929003553602 | MAS LEDtube HF 1200mm HO 14W865 T8 | 6500 K | 865 | 2,100 lm |
| 929003553702 | MAS LEDtube HF 1500mm HO 20W830 T8 | 3000 K | 830 | 2,900 lm |
| 929003553802 | MAS LEDtube HF 1500mm HO 20W840 T8 | 4000 K | 840 | 3,100 lm |
| 929003553902 | MAS LEDtube HF 1500mm HO 20W865 T8 | 6500 K | 865 | 3,100 lm |
| 929003554002 | MAS LEDtube HF 1200mm UO 16W830 T8 | 3000 K | 830 | 2,350 lm |

| Order Code | Full Product Name | Correlated Color | | Luminous Flux |
|--------------|------------------------------------|-------------------|------------|---------------|
| | | Temperature (Nom) | Color Code | |
| 929003554102 | MAS LEDtube HF 1200mm UO 16W840 T8 | 4000 K | 840 | 2,500 lm |
| 929003554202 | MAS LEDtube HF 1200mm UO 16W865 T8 | 6500 K | 865 | 2,500 lm |
| 929003554302 | MAS LEDtube HF 1500mm UO 24W830 T8 | 3000 K | 830 | 3,500 lm |
| 929003554402 | MAS LEDtube HF 1500mm UO 24W840 T8 | 4000 K | 840 | 3,700 lm |
| 929003554502 | MAS LEDtube HF 1500mm UO 24W865 T8 | 6500 K | 865 | 3,700 lm |
| 929001393132 | MAS LEDtube HF 600mm HO 8W830 T8 | 3000 K | 830 | 1,000 lm |
| 929001393232 | MAS LEDtube HF 600mm HO 8W840 T8 | 4000 K | 840 | 1,050 lm |
| 929001393332 | MAS LEDtube HF 600mm HO 8W865 T8 | 6500 K | 865 | 1,050 lm |

Operating and Electrical

| Order Code | Full Product Name | | Power Consumption | |
|--------------|---------------------------------------|-----------------|-------------------|-------------|
| | Name | Input Frequency | Line Frequency | Consumption |
| 929002479402 | MAS LEDtube HF 1200mm 14W 833 T8 FOOD | 20000-75000 Hz | 20000-75000 Hz | 14 W |

| Order Code | Full Product Name | | Power Consumption | |
|--------------|------------------------------------|-----------------|-------------------|-------------|
| | Name | Input Frequency | Line Frequency | Consumption |
| 929003553402 | MAS LEDtube HF 1200mm HO 14W830 T8 | 20000-75000 Hz | 20000-75000 Hz | 14 W |

MASTER LED tube InstantFit HF T8

| Order Code | Full Product | | | Power |
|--------------|--|-------------------|-------------------|-------------|
| | Name | Input Frequency | Line Frequency | Consumption |
| 929003553502 | MAS LEDtube HF 1200mm HO 14W840 T8 | 20000-75000 Hz | 20000-75000 Hz | 14 W |
| 929003553602 | MAS LEDtube HF 1200mm HO 14W865 T8 | 20000-75000 Hz | 20000-75000 Hz | 14 W |
| 929003553702 | MAS LEDtube HF 1500mm HO 20W830 T8 | 20000-75000 Hz | 20000-75000 Hz | 20 W |
| 929003553802 | MAS LEDtube HF 1500mm HO 20W840 T8 | 20000-75000 Hz | 20000-75000 Hz | 20 W |
| 929003553902 | MAS LEDtube HF 1500mm HO 20W865 T8 | 20000-75000 Hz | 20000-75000 Hz | 20 W |
| 929003554002 | MAS LEDtube HF 1200mm UO 16W830 T8 | 20000-75000 Hz | 20000-75000 Hz | 16 W |
| 929003554102 | MAS LEDtube HF 1200mm UO 16W840 T8 | 20000-75000 Hz | 20000-75000 Hz | 16 W |

| Order Code | Full Product | | | Power |
|--------------|--|--------------------|--------------------|-------------|
| | Name | Input Frequency | Line Frequency | Consumption |
| 929003554202 | MAS LEDtube HF 1200mm UO 16W865 T8 | 20000-75000 Hz | 20000-75000 Hz | 16 W |
| 929003554302 | MAS LEDtube HF 1500mm UO 24W830 T8 | 20000-75000 Hz | 20000-75000 Hz | 24 W |
| 929003554402 | MAS LEDtube HF 1500mm UO 24W840 T8 | 20000-75000 Hz | 20000-75000 Hz | 24 W |
| 929003554502 | MAS LEDtube HF 1500mm UO 24W865 T8 | 20000-75000 Hz | 20000-75000 Hz | 24 W |
| 929001393132 | MAS LEDtube HF 600mm HO 8W830 T8 | 20000-120000 Hz | 20000-120000 Hz | 8 W |
| 929001393232 | MAS LEDtube HF 600mm HO 8W840 T8 | 20000-120000 Hz | 20000-120000 Hz | 8 W |
| 929001393332 | MAS LEDtube HF 600mm HO 8W865 T8 | 20000-120000 Hz | 20000-120000 Hz | 8 W |

Controls and Dimming

| Order Code | Full Product Name | Dimmable |
|--------------|---------------------------------------|-----------------------------------|
| 929002479402 | MAS LEDtube HF 1200mm 14W 833 T8 FOOD | No |
| 929003553402 | MAS LEDtube HF 1200mm HO 14W830 T8 | Yes - Check ballast compatibility |
| 929003553502 | MAS LEDtube HF 1200mm HO 14W840 T8 | Yes - Check ballast compatibility |
| 929003553602 | MAS LEDtube HF 1200mm HO 14W865 T8 | Yes - Check ballast compatibility |
| 929003553702 | MAS LEDtube HF 1500mm HO 20W830 T8 | Yes - Check ballast compatibility |
| 929003553802 | MAS LEDtube HF 1500mm HO 20W840 T8 | Yes - Check ballast compatibility |
| 929003553902 | MAS LEDtube HF 1500mm HO 20W865 T8 | Yes - Check ballast compatibility |
| 929003554002 | MAS LEDtube HF 1200mm UO 16W830 T8 | Yes - Check ballast compatibility |

| Order Code | Full Product Name | Dimmable |
|--------------|------------------------------------|-----------------------------------|
| 929003554102 | MAS LEDtube HF 1200mm UO 16W840 T8 | Yes - Check ballast compatibility |
| 929003554202 | MAS LEDtube HF 1200mm UO 16W865 T8 | Yes - Check ballast compatibility |
| 929003554302 | MAS LEDtube HF 1500mm UO 24W830 T8 | Yes - Check ballast compatibility |
| 929003554402 | MAS LEDtube HF 1500mm UO 24W840 T8 | Yes - Check ballast compatibility |
| 929003554502 | MAS LEDtube HF 1500mm UO 24W865 T8 | Yes - Check ballast compatibility |
| 929001393132 | MAS LEDtube HF 600mm HO 8W830 T8 | No |
| 929001393232 | MAS LEDtube HF 600mm HO 8W840 T8 | No |
| 929001393332 | MAS LEDtube HF 600mm HO 8W865 T8 | No |

Mechanical and Housing

| Order Code | Full Product Name | Bulb Shape |
|--------------|---------------------------------------|--------------------|
| 929002479402 | MAS LEDtube HF 1200mm 14W 833 T8 FOOD | Tube, double-ended |
| 929003553402 | MAS LEDtube HF 1200mm HO 14W830 T8 | T8 |
| 929003553502 | MAS LEDtube HF 1200mm HO 14W840 T8 | T8 |
| 929003553602 | MAS LEDtube HF 1200mm HO 14W865 T8 | T8 |
| 929003553702 | MAS LEDtube HF 1500mm HO 20W830 T8 | T8 |

| Order Code | Full Product Name | Bulb Shape |
|--------------|------------------------------------|------------|
| 929003553802 | MAS LEDtube HF 1500mm HO 20W840 T8 | T8 |
| 929003553902 | MAS LEDtube HF 1500mm HO 20W865 T8 | T8 |
| 929003554002 | MAS LEDtube HF 1200mm UO 16W830 T8 | T8 |
| 929003554102 | MAS LEDtube HF 1200mm UO 16W840 T8 | T8 |
| 929003554202 | MAS LEDtube HF 1200mm UO 16W865 T8 | T8 |

MASTER LED tube InstantFit HF T8

| Order Code | Full Product Name | Bulb Shape |
|--------------|------------------------------------|------------|
| 929003554302 | MAS LEDtube HF 1500mm UO 24W830 T8 | T8 |
| 929003554402 | MAS LEDtube HF 1500mm UO 24W840 T8 | T8 |
| 929003554502 | MAS LEDtube HF 1500mm UO 24W865 T8 | T8 |

| Order Code | Full Product Name | Bulb Shape |
|--------------|----------------------------------|------------|
| 929001393132 | MAS LEDtube HF 600mm HO 8W830 T8 | T8 |
| 929001393232 | MAS LEDtube HF 600mm HO 8W840 T8 | T8 |
| 929001393332 | MAS LEDtube HF 600mm HO 8W865 T8 | T8 |

Approval and Application

| Order Code | Full Product Name | Energy Consumption kWh/1000 h |
|--------------|--|-------------------------------|
| 929002479402 | MAS LEDtube HF 1200mm 14W 833 T8 FOOD | 14 kWh |
| 929003553402 | MAS LEDtube HF 1200mm HO 14W830 T8 | 14 kWh |
| 929003553502 | MAS LEDtube HF 1200mm HO 14W840 T8 | 14 kWh |
| 929003553602 | MAS LEDtube HF 1200mm HO 14W865 T8 | 14 kWh |
| 929003553702 | MAS LEDtube HF 1500mm HO 20W830 T8 | 20 kWh |
| 929003553802 | MAS LEDtube HF 1500mm HO 20W840 T8 | 20 kWh |
| 929003553902 | MAS LEDtube HF 1500mm HO 20W865 T8 | 20 kWh |
| 929003554002 | MAS LEDtube HF 1200mm UO 16W830 T8 | 16 kWh |
| 929003554102 | MAS LEDtube HF 1200mm UO 16W840 T8 | 16 kWh |
| 929003554202 | MAS LEDtube HF 1200mm UO 16W865 T8 | 16 kWh |
| 929003554302 | MAS LEDtube HF 1500mm UO 24W830 T8 | 24 kWh |
| 929003554402 | MAS LEDtube HF 1500mm UO 24W840 T8 | 24 kWh |
| 929003554502 | MAS LEDtube HF 1500mm UO 24W865 T8 | 24 kWh |
| 929001393132 | MAS LEDtube HF 600mm HO 8W830 T8 | 8 kWh |
| 929001393232 | MAS LEDtube HF 600mm HO 8W840 T8 | 8 kWh |
| 929001393332 | MAS LEDtube HF 600mm HO 8W865 T8 | 8 kWh |

