

Micropower electronic ballast for TL/PL-S/-T/-C lamps

Micropower Electronic ballast for TL/PL-S/-T/-C lamps (India)

Compact, lightweight, high-frequency electronic ballast designed for TL (6-18 W) and compact fluorescent PL (7-24 W) lamps

Benefits

- Optimum lamp lifetime compared with electromagnetic gear circuits is achieved in applications with long burning hours (IEC cycle)
- Energy savings of more than 25% (at equal luminous flux) compared with electromagnetic gear
- Enhanced design freedom thanks to compact form

Features

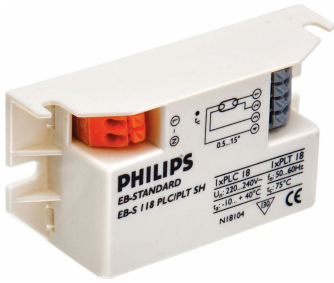
- Warm start: (EBS 114 & EBS118) flicker-free start, ideal for lighting applications up to 25 W
- Multi-lamp ballast: one ballast can be used to drive lamps of different types and wattages

Application

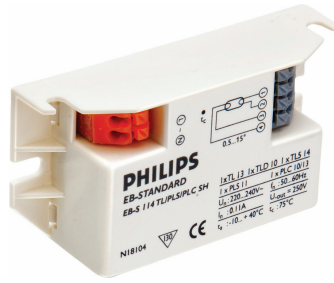
- Indoor residential areas
- Outdoor residential areas

Micropower Electronic ballast for TL/PL-S/-T/-C lamps (India)

Versions

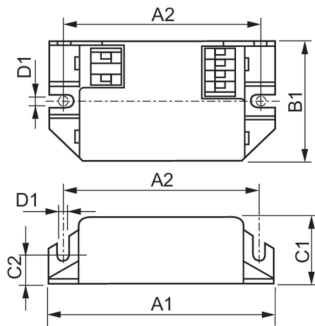


GPPR_INEFLU02_0001-Product photo



GPPR INEFLU02 0002

Dimensional drawing



Product	D1	C1	A1	A2	B1
EBS 114 230 SH	4.0 mm	22.0 mm	80.0 mm	65.0 mm	40.0 mm
EBS 118 230 SH	4.0 mm	22.0 mm	80.0 mm	65.0 mm	40.0 mm

