



Digital ignitors for silent operation

Electronic parallel ignitor for HID lamp circuits

HID ignitors for parallel systems

Benefits

- Will only work with semi-parallel ballasts
- Will only work with semi-parallel ballasts
- Silent operation
- Silent operation
- Can operate remotely at considerable distance from the lamp
- Can operate remotely at considerable distance from the lamp

Features

- Parallel ignitor will only work in parallel circuits and must be matched with the relevant ballast
- Parallel ignitor will only work in parallel circuits and must be matched with the relevant ballast
- Ignitors equipped with screw terminal blocks as standard
- Ignitors equipped with screw terminal blocks as standard
- Lightweight and compact products
- Lightweight and compact products
- Current flows through ignitor only at lamp start-up
- Current flows through ignitor only at lamp start-up

Application

- Outdoor lighting (most popular applications: road, sports and area lighting)
- Outdoor lighting (most popular applications: road, sports and area lighting)

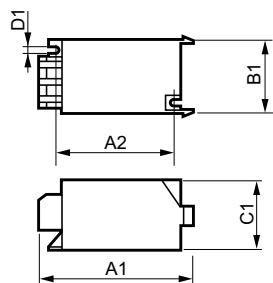
Electronic parallel ignitor for HID lamp circuits

Versions



GPPR_IGHPI-Product photo

Dimensional drawing



Product	C1	A1	A2	B1	D1
SI 51 Plus	38.5 mm	85.5 mm	65.0 mm	41.5 mm	4.3 mm

