



# LuxSpace surface-mounted – high efficiency, visual comfort and a stylish design

## LuxSpace, surface mounted

Customers are looking to optimize all their resources, and that means not just their running costs (energy, etc.) but also their human resources. Energy savings are therefore a priority, but they must not have an adverse effect on the well-being of employees, who need a pleasant environment in order to be more productive, or on customers, who want to enjoy their shopping experience. LuxSpace provides the perfect combination of efficiency, light comfort and design, without compromising on lighting performance (color rendering and color uniformity). It offers a wide choice of options for creating the desired ambience, no matter the application.

### Benefits

- Product which delivers visual comfort and stylish design
- Creates a gentle, natural light, ensuring visual comfort

### Features

- Choice of four optics: high-gloss, faceted, matt and white
- Heights: deep (up to UGR 19), low (up to UGR 22)
- Light color: 830, 840, 927, 930 and 940 (CRI90 versions upon request)
- Colors: high-gloss metalized, white (RAL9003), grey (RAL9006), black (RAL9004) as standard (any other RAL color possible upon request)
- Compliant for central emergency lighting with DC (upon request)
- 3C track and pendant version (upon request)

# LuxSpace, surface mounted

## Application

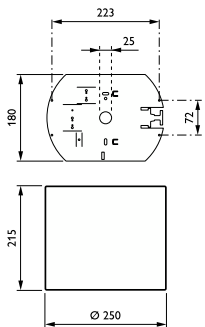
- Offices
- Retail
- Hospitals
- Hotels
- Airports

## Versions

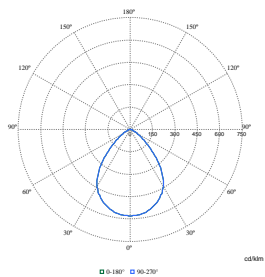


LuxSpace surface mounted-DN570C D250

## Dimensional drawing



## Polar Wide Diagrams



Polar Normal (separate) - DN570BI -  
910505100963

## LuxSpace, surface mounted

