



# **Philips GreenSpace – hoog rendement, verkrijgbaar in aangepaste maten (150 mm - 280 mm), gemaakt van >55% gerecycled materiaal**

## **GreenSpace 2 DN460B/DN461B/DN470B/DN471B**

GreenSpace is de perfecte oplossing voor klanten die streven naar de ideale balans tussen hun initiële investering en de onderhoudskosten gedurende de levensduur voor meerdere toepassingen. GreenSpace is voorzien van de nieuwste LED-technologie die een extreem laag energieverbruik mogelijk maakt. Door de perfecte pasvorm krijg je altijd een LED-downlight die past en er tegelijkertijd perfect uitziet. Deze perfecte pasvorm is verkrijgbaar voor inbouwopeningen van 150 mm tot 280 mm, de ideale oplossing voor je renovatieproject. Het scheelt veel gedoe en tijdrovende, dure adapteringen zijn niet nodig. GreenSpace is ontworpen voor de circulaire economie met geoptimaliseerde prestaties, een verlengde levensduur door upgrademogelijkheden en integratieopties en is gemakkelijk aan te passen, te recyclen en te demonteren. De lamp heeft een behuizing en rand van ten minste 55% gerecycled of uitgebalanceerd bio-circulair materiaal en is daarmee een bewuste keuze voor mensen die willen bijdragen aan een circulaire economie. GreenSpace kan ook aan draadloze systemen worden gekoppeld voor een slimme oplossing voor kantoorverlichting met optionele geïntegreerde sensors.

# GreenSpace 2 DN460B/DN461B/DN470B/DN471B

## Voordelen

- Hoge lm/W door efficiënte LEDs
- Tot 70% energiebesparing: totale eigendomskosten in minder dan twee jaar terugverdiend
- Voldoet aan kantoorverlichtingsnorm, met stabiele kleurprestaties en een hoge kleurweergave

## Kenmerken

- Mini (DN460B) en compacte (DN470B) afmetingen voor inbouw
- Verkrijgbaar in opbouw-, rail- en pendelmodellen (DRUM)
- Aangepaste inbouwopeningen tussen 150 mm en 280 mm, in totaal 28 afmetingen verkrijgbaar
- UGR19-versie met antiverblindingsring
- Verkrijgbaar in 700-4000 lumen voor toepassingen met hogere plafonds
- Beschikbare kleuren: wit, zilver en zwart (standaard)
- IP54-versie met lichtkap aan de voorzijde en noodverlichting verkrijgbaar
- Te configureren met tal van drivertypes zoals DALI, PoE en draadloos InterAct-ready
- Snelle installatie dankzij diversiteit aan aansluitingen en kabels
- Geprinte onderdelen van ten minste 55% gerecycled of uitgebalanceerd, bio-circulair materiaal

## Toepassing

- Kantoren
- Winkels
- Ziekenhuizen en zorgcentra
- Hotels, cafés, restaurants

## Versions



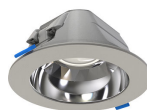
GreenSpace Mini, office-compliant reflector, white rim



GreenSpace perfect fit 225mm cut-out



GreenSpace Mini, office-compliant reflector, protection cover clear, white rim



GreenSpace Mini, high-gloss reflector, grey rim

# GreenSpace 2 DN460B/DN461B/DN470B/DN471B

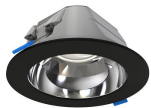
## Versions



GreenSpace Compact, white reflector, protection cover opal, white rim



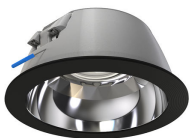
GreenSpace Compact, office-compliant reflector, white rim



GreenSpace Mini, high-gloss reflector, black rim



GreenSpace Compact, office-compliant reflector, protection cover clear, white rim



GreenSpace Compact, high-gloss reflector, black rim



GreenSpace Compact, high-gloss reflector, protection cover clear, white rim



GreenSpace Compact, high-gloss reflector, white rim



GreenSpace perfect fit 230mm cut-out

# GreenSpace 2 DN460B/DN461B/DN470B/DN471B

## Versions

GreenSpace Mini, high-gloss reflector, protection cover clear, white rim



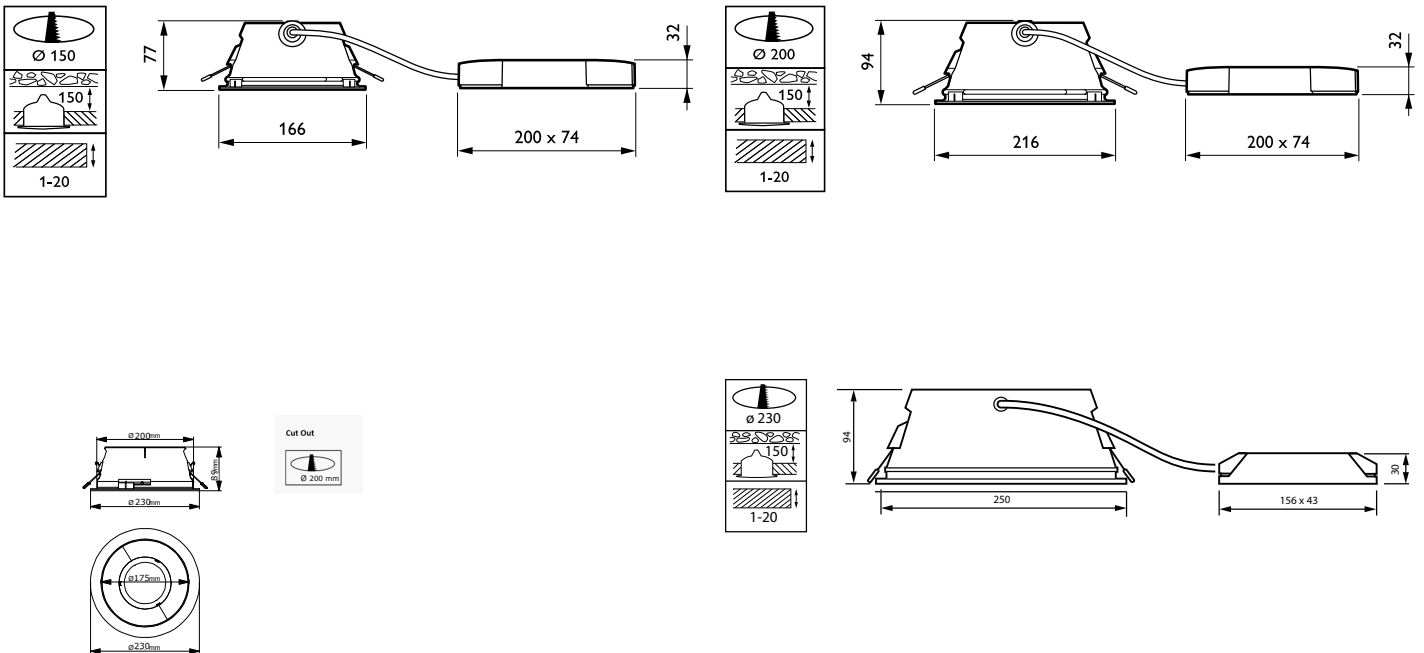
GreenSpace Mini, white reflector, protection cover opal, white rim



GreenSpace Compact, high-gloss reflector, grey rim

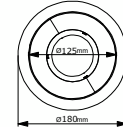
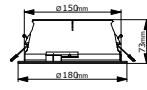
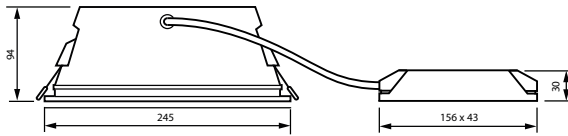
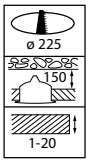
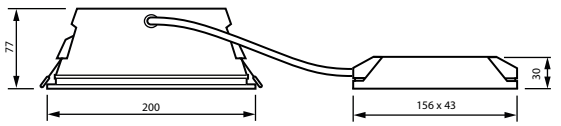
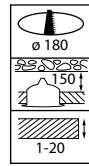
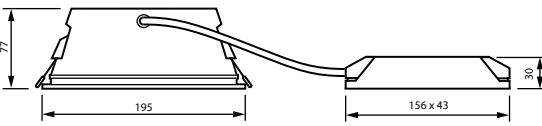
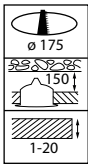
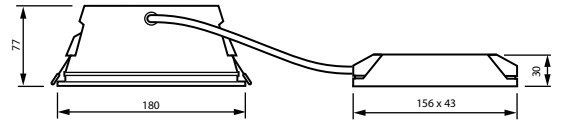
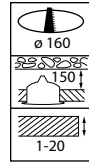
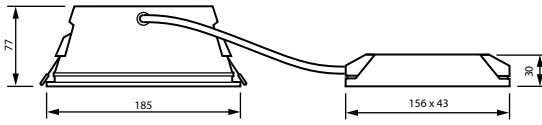
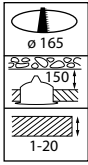


## Maatschets



# GreenSpace 2 DN460B/DN461B/DN470B/DN471B

## Maatschets



## Productgegevens

Greenspace\_EU\_gen\_2-DN473B-  
DPP.TIF



Greenspace\_EU\_gen\_2-DN472B-  
DPP.TIF

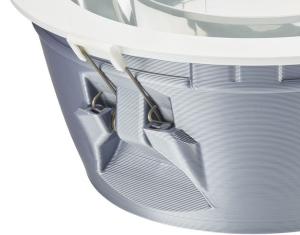


# GreenSpace 2 DN460B/DN461B/DN470B/DN471B

## Productgegevens



Greenspace\_EU\_gen\_2-  
DN462\_463\_472\_473B-1DPP.TIF



Greenspace\_EU\_gen\_2-  
DN462\_463\_472\_473B-3DPP.TIF



Greenspace\_EU\_gen\_2-DN462B-  
DPP.TIF



Greenspace\_EU\_gen\_2-  
DN462\_463\_472\_473B-2DPP.TIF

Greenspace\_EU\_gen\_2-DN463B-  
DPP.TIF



# GreenSpace 2 DN460B/DN461B/DN470B/DN471B

Algemene informatie	
Driver/VSA inbegrepen	Ja
VSA	-
Aantal VSA's	1 unit
Gegevens lichttechniek	
Kleurweergave-index (CRI)	>80
Bedrijfs- en elektrische gegevens	
IEC beschermingsklasse	Veiligheidsklasse II
Ingangsfrequentie	50 to 60 Hz
Dimbaarheid en regelsystemen	
Ingebouwde regeling	-
Eigenschappen behuizing en afmetingen	
Type lichtkap	-
IK-classificatie	IK02
Keurmerken en classificaties	
CE-markering	Ja
Brandbaarheidsmarkering	-

## Algemene informatie

Order Code	Full Product Name	Type	Lichtbron	
		lichtbron	vervangbaar	Servicetag
8718699982560	DN461B LED11S/830 DIA-VLC-E C ELP3 WH P	11S	Nee	Ja
8718699982577	DN461B LED11S/830 DIA-VLC-E C WH P	11S	Nee	Ja
8718699982584	DN461B LED11S/840 DIA-VLC-E C ELP3 WH P	11S	Nee	Ja
8718699982591	DN461B LED11S/840 DIA-VLC-E C WH P	11S	Nee	Ja
8718699982911	DN461B LED20S/840 DIA-VLC-E C WH P	20S	Nee	Ja
8718699982973	DN463B LED11S/830 DIA-VLC-E C WH PCC P	11S	Nee	Ja
8718699982980	DN463B LED11S/840 DIA-VLC-E C WH PCC P	11S	Nee	Ja
8720169013056	DN461B LED11S/830 PSD-E C WH P	11S	Nee	Ja
8720169013063	DN461B LED11S/840 PSD-E C WH P	11S	Nee	Ja
8718699384661	DN463B LED11S/830 PSU-E C WH PCC P	LED11S	Nee	Ja
8718699384678	DN463B LED11S/840 PSU-E C WH PCC P	LED11S	Nee	Ja
8718699793234	DN461B LED11S/830 PSU-E C WH P	LED11S	Nee	Ja
8718699793241	DN461B LED11S/840 PSU-E C WH P	LED11S	Nee	Ja
8718699793432	DN461B LED11S/830 PSU-E C ELP3 WH P	LED11S	Nee	Ja
8718699793449	DN461B LED11S/840 PSU-E C ELP3 WH P	LED11S	Nee	Ja
8720169838970	DN500B 20S/840 PSU-E OC WH	-	-	-
8719514563995	TCTT165 11S/840 PSU-E WH	-	-	Ja
8719514577046	TCTT165 11S/830 PSU-E WH	-	-	Ja
8720169839007	DN500B 20S/840 PSU-E OC WH PCC	-	-	-
8718699983079	DN471B LED20S/830 WIA-E C WH P	20S	Nee	Ja
8718699983093	DN471B LED20S/840 WIA-E C WH P	20S	Nee	Ja
8718699983222	DN471B LED20S/830 DIA-VLC-E C ELP3 WH P	20S	Nee	Ja
8718699983239	DN471B LED20S/830 DIA-VLC-E C WH P	20S	Nee	Ja
8718699983246	DN471B LED20S/840 DIA-VLC-E C ELP3 WH P	20S	Nee	Ja
8718699983253	DN471B LED20S/840 DIA-VLC-E C WH P	20S	Nee	Ja
8718699983260	DN471B LED30S/830 DIA-VLC-E C ELP3 WH P	30S	Nee	Ja
8718699983277	DN471B LED30S/830 DIA-VLC-E C WH P	30S	Nee	Ja
8718699983284	DN471B LED30S/840 DIA-VLC-E C ELP3 WH P	30S	Nee	Ja
8718699983291	DN471B LED30S/840 DIA-VLC-E C WH P	30S	Nee	Ja
8718699983376	DN473B LED20S/830 DIA-VLC-E C WH PCC P	20S	Nee	Ja
8718699983383	DN473B LED20S/840 DIA-VLC-E C WH PCC P	20S	Nee	Ja
8718699983390	DN473B LED30S/830 DIA-VLC-E C WH PCC P	30S	Nee	Ja
8718699983406	DN473B LED30S/840 DIA-VLC-E C WH PCC P	30S	Nee	Ja
8720169013094	DN471B LED20S/830 PSD-E C WH P	20S	Nee	Ja
8720169013100	DN471B LED20S/840 PSD-E C WH P	20S	Nee	Ja
8718699384746	DN473B LED20S/830 PSU-E C WH PCC P	LED20S	Nee	Ja
8718699384753	DN473B LED20S/840 PSU-E C WH PCC P	LED20S	Nee	Ja
8718699793319	DN471B LED20S/830 PSU-E C WH P	LED20S	Nee	Ja
8718699793326	DN471B LED20S/840 PSU-E C WH P	LED20S	Nee	Ja
8718699793555	DN471B LED20S/830 PSU-E C ELP3 WH P	LED20S	Nee	Ja
8718699793562	DN471B LED20S/840 PSU-E C ELP3 WH P	LED20S	Nee	Ja
8718699945831	DN471B LED30S/830 PSU-E C WH P	-	Nee	Ja
8718699945848	DN471B LED30S/840 PSU-E C WH P	-	Nee	Ja
8718699945954	DN471B LED30S/830 PSU-E C ELP3 WH P	-	Nee	Ja
8718699945961	DN471B LED30S/840 PSU-E C ELP3 WH P	-	Nee	Ja
8719514574427	TCTT175 20S/830 PSU-E WH	-	-	Ja
8719514581371	TCTT175 20S/840 PSU-E WH	-	-	Ja
8720169838956	DN500B 20S/840 PSU-E C GR	-	-	-
8718699982997	DN470B LED11S/840 DIA-VLC-E C WH P	11S	Nee	Ja
8718699983000	DN470B LED20S/830 DIA-VLC-E C ELP3 WH P	20S	Nee	Ja

## GreenSpace 2 DN460B/DN461B/DN470B/DN471B

Order Code	Full Product Name	Type	Lichtbron		Servicetag
		lichtbron	vervangbaar		
8718699983017	DN470B LED20S/830 DIA-VLC-E C WH P	20S	Nee	Ja	
8718699983024	DN470B LED20S/840 DIA-VLC-E C ELP3 WH P	20S	Nee	Ja	
8718699983055	DN470B LED20S/840 WIA-E C WH P	20S	Nee	Ja	
8718699983116	DN472B LED20S/830 WIA-E C WH PCC P	20S	Nee	Ja	
8718699983130	DN472B LED20S/840 WIA-E C WH PCC P	20S	Nee	Ja	
8718699983185	DN470B LED30S/830 DIA-VLC-E C ELP3 WH P	30S	Nee	Ja	
8718699983192	DN470B LED30S/830 DIA-VLC-E C WH P	30S	Nee	Ja	
8718699983208	DN470B LED30S/840 DIA-VLC-E C ELP3 WH P	30S	Nee	Ja	
8718699983215	DN470B LED30S/840 DIA-VLC-E C WH P	30S	Nee	Ja	
8718699983307	DN472B LED20S/830 DIA-VLC-E C WH PCC P	20S	Nee	Ja	
8718699983321	DN472B LED20S/840 DIA-VLC-E C WH PCC P	20S	Nee	Ja	
8718699983345	DN472B LED30S/830 DIA-VLC-E C WH PCC P	30S	Nee	Ja	
8718699983352	DN472B LED30S/840 DIA-VLC-E C WH PCC P	30S	Nee	Ja	
8718699983666	DN470B LED20S/830 WIA-E C WH P	20S	Nee	Ja	
8720169012905	DN470B LED20S/830 PSD-E C WH P	20S	Nee	Ja	
8720169012912	DN470B LED30S/830 PSD-E C WH P	30S	Nee	Ja	
8720169013070	DN470B LED20S/840 PSD-E C WH P	20S	Nee	Ja	
8720169013087	DN470B LED30S/840 PSD-E C WH P	30S	Nee	Ja	
87186999834708	DN472B LED20S/830 PSU-E C WH PCC P	LED20S	Nee	Ja	
87186999834715	DN472B LED20S/840 PSU-E C WH PCC P	LED20S	Nee	Ja	
87186999793272	DN470B LED20S/830 PSU-E C WH P	LED20S	Nee	Ja	
87186999793289	DN470B LED20S/840 PSU-E C WH P	LED20S	Nee	Ja	
87186999793517	DN470B LED20S/830 PSU-E C ELP3 WH P	LED20S	Nee	Ja	
87186999793524	DN470B LED20S/840 PSU-E C ELP3 WH P	LED20S	Nee	Ja	
8718699945756	DN470B LED30S/830 PSU-E C WH P	-	Nee	Ja	
8718699945763	DN470B LED30S/840 PSU-E C WH P	-	Nee	Ja	
8718699945916	DN470B LED30S/830 PSU-E C ELP3 WH P	-	Nee	Ja	
8718699945923	DN470B LED30S/840 PSU-E C ELP3 WH P	-	Nee	Ja	
8720169839069	DN510B 20S/840 PSU-E WR WH PCO	-	-	-	
8720169838635	DN500B 11S/830 PSU-E C WH	-	-	-	
8720169838932	DN500B 20S/830 PSU-E C WH	-	-	-	
8720169838949	DN500B 20S/840 PSU-E C WH	-	-	-	
8718699982522	DN460B LED11S/830 DIA-VLC-E C ELP3 WH P	11S	Nee	Ja	
8718699982539	DN460B LED11S/830 DIA-VLC-E C WH P	11S	Nee	Ja	
8718699982546	DN460B LED11S/840 DIA-VLC-E C WH P	11S	Nee	Ja	
8718699982553	DN460B LED20S/840 DIA-VLC-E C WH P	20S	Nee	Ja	
8718699982928	DN462B LED11S/830 DIA-VLC-E C WH PCC P	11S	Nee	Ja	
8718699982942	DN462B LED11S/840 DIA-VLC-E C WH PCC P	11S	Nee	Ja	
8720169013032	DN460B LED11S/830 PSD-E C WH P	11S	Nee	Ja	
8720169013049	DN460B LED11S/840 PSD-E C WH P	11S	Nee	Ja	
87186999834623	DN462B LED11S/830 PSU-E C WH PCC P	LED11S	Nee	Ja	
87186999793197	DN460B LED11S/830 PSU-E C WH P	LED11S	Nee	Ja	
87186999793203	DN460B LED11S/840 PSU-E C WH P	LED11S	Nee	Ja	
87186999793395	DN460B LED11S/830 PSU-E C ELP3 WH P	LED11S	Nee	Ja	
87186999793401	DN460B LED11S/840 PSU-E C ELP3 WH P	LED11S	Nee	Ja	
8718699982935	DN462B LED11S/830 DIA-VLC-E C WH PCO P	11S	Nee	Ja	
8718699982959	DN462B LED11S/840 DIA-VLC-E C WH PCO P	11S	Nee	Ja	
87186999793357	DN462B LED11S/830 PSU-E C WH PCO P	LED11S	Nee	Ja	
87186999793364	DN462B LED11S/840 PSU-E C WH PCO P	LED11S	Nee	Ja	
8718699983314	DN472B LED20S/830 DIA-VLC-E C WH PCO P	20S	Nee	Ja	
8718699983338	DN472B LED20S/840 DIA-VLC-E C WH PCO P	20S	Nee	Ja	

## GreenSpace 2 DN460B/DN461B/DN470B/DN471B

Order Code	Full Product Name	Type	Lichtbron		Servicetag
		lichtbron	vervangbaar		
8720169013117	DN472B LED11S/830 PSD-E C WH PCO P	11S	Nee	Ja	
8720169013124	DN472B LED11S/840 PSD-E C WH PCO P	11S	Nee	Ja	
8718699793470	DN472B LED20S/830 PSU-E C WH PCO P	LED20S	Nee	Ja	
8718699793487	DN472B LED20S/840 PSU-E C WH PCO P	LED20S	Nee	Ja	
8720169839045	DN510B 20S/840 PSU-E OC WH	-	-	-	
8720169839090	DN510B 30S/840 PSU-E OC WH	-	-	-	
8719514567955	TCTT180 20S/840 PSU-E WH281	-	-	Ja	
8720169081567	TCTT180 20S/830 PSU-E WH	-	-	Ja	
8720169838963	DN500B 20S/840 PSU-E C BK	-	-	-	
8720169839076	DN510B 20S/840 PSU-E OC WH PCC	-	-	-	
8720169839038	DN510B 20S/840 PSU-E C BK	-	-	-	
8720169839052	DN510B 20S/840 PSU-E C WH PCC	-	-	-	
8720169838642	DN510B 20S/830 PSU-E C WH	-	-	-	
8720169839014	DN510B 20S/840 PSU-E C WH	-	-	-	
8720169839083	DN510B 30S/840 PSU-E C WH	-	-	-	
8719514564091	TCTT225 20S/840 PSU-E WH	-	-	Ja	
8719514573925	TCTT225 20S/830 PSU-E WH	-	-	Ja	
8719514563988	TCTT160 11S/840 PSU-E WH	-	-	Ja	
8720169081888	TCTT160 11S/830 PSU-E WH	-	-	Ja	
8720169838987	DN500B 20S/840 PSU-E C WH PCC	-	-	-	
8720169838994	DN500B 20S/840 PSU-E WR WH PCO	-	-	-	
8719514564107	TCTT230 20S/840 PSU-E WH	-	-	Ja	
8719514573963	TCTT230 20S/830 PSU-E WH	-	-	Ja	
8720169839021	DN510B 20S/840 PSU-E C GR	-	-	-	

### Gegevens lichttechniek (1/2)

Order Code	Full		Gecorreleerde kleurtemperatuur (nom.)	Lichtrendement (gespec.)		Order Code	Full		Gecorreleerde kleurtemperatuur (nom.)	Lichtrendement (gespec.)	
	Product Name	Bundelhoek lichtbron		Lichtstroom	Product Name		Bundelhoek lichtbron	Lichtstroom			
8718699982560	DN461B LED11S/ 830 DIA- VLC-E C ELP3 WH P	- graden	3000 K	125 lm/W	1.050 lm	8718699982591	DN461B LED11S/ 840 DIA- VLC-E C WH P	- graden	4000 K	129 lm/W	1.100 lm
8718699982577	DN461B LED11S/ 830 DIA- VLC-E C WH P	- graden	3000 K	125 lm/W	1.050 lm	8718699982911	DN461B LED20S/ 840 DIA- VLC-E C WH P	- graden	4000 K	131 lm/W	1.800 lm
8718699982584	DN461B LED11S/ 840 DIA- VLC-E C ELP3 WH P	- graden	4000 K	129 lm/W	1.100 lm	8718699982973	DN463B LED11S/ 830 DIA- VLC-E C WH PCC P	- graden	3000 K	116 lm/W	1.000 lm
						8718699982980	DN463B LED11S/ 830 DIA- VLC-E C WH PCC P	- graden	4000 K	119 lm/W	1.000 lm

## GreenSpace 2 DN460B/DN461B/DN470B/DN471B

Order Code	Full Product Name	Bundelhoek lichtbron	Gecorreleerde kleurtemperatuur (nom.)	Lichtrendement (gespec.) (nom.)	Lichtstroom	Order Code	Full Product Name	Bundelhoek lichtbron	Gecorreleerde kleurtemperatuur (nom.)	Lichtrendement (gespec.) (nom.)	Lichtstroom
	840 DIA- VLC-E C WH PCC P					8720169838970	DN500B 20S/840 PSU-E OC WH	-	4000 K	149 lm/W	2.000 lm
8720169013056	DN461B LED11S/ 830 PSD-E C WH P	-	3000 K	131 lm/W	1.050 lm	8719514563995	TCTT165 11S/840 PSU-E WH	90 graden	4000 K	138 lm/W	1.130 lm
8720169013063	DN461B LED11S/ 840 PSD-E C WH P	-	4000 K	135 lm/W	1.100 lm	8719514577046	TCTT165 11S/830 PSU-E WH	90 graden	3000 K	134 lm/W	1.098 lm
8718699384661	DN463B LED11S/ 830 PSU-E C WH PCC P	- graden	3000 K	120 lm/W	1.000 lm	8720169839007	DN500B 20S/840 PSU-E OC WH PCC	-	4000 K	146 lm/W	1.950 lm
8718699384678	DN463B LED11S/ 840 PSU-E C WH PCC P	- graden	4000 K	124 lm/W	1.000 lm	8718699983079	DN471B LED20S/ 830 WIA-E C WH P	- graden	3000 K	137 lm/W	1.800 lm
8718699793234	DN461B LED11S/ 830 PSU-E C WH P	- graden	3000 K	130 lm/W	1.050 lm	8718699983093	DN471B LED20S/ 840 WIA-E C WH P	- graden	4000 K	141 lm/W	1.850 lm
8718699793241	DN461B LED11S/ 840 PSU-E C WH P	- graden	4000 K	134 lm/W	1.100 lm	8718699983222	DN471B LED20S/ 830 DIA- VLC-E C ELP3 WH P	- graden	3000 K	133 lm/W	1.800 lm
8718699793432	DN461B LED11S/ 830 PSU-E C ELP3 WH P	- graden	3000 K	130 lm/W	1.050 lm	8718699983239	DN471B LED20S/ 830 DIA- VLC-E C WH P	- graden	3000 K	133 lm/W	1.800 lm
8718699793449	DN461B LED11S/ 840 PSU-E C ELP3 WH P	- graden	4000 K	134 lm/W	1.100 lm	8718699983246	DN471B LED20S/ 840 DIA- VLC-E C ELP3 WH P	- graden	4000 K	136 lm/W	1.850 lm
						8718699983253	DN471B LED20S/ 840	- graden	4000 K	136 lm/W	1.850 lm

## GreenSpace 2 DN460B/DN461B/DN470B/DN471B

Order Code	Full Product Name	Bundelhoek lichtbron	Gecorreleerde kleurtemperatuur (nom.)	Lichtrendement (gespec.) (nom.)	Lichtstroom	Order Code	Full Product Name	Bundelhoek lichtbron	Gecorreleerde kleurtemperatuur (nom.)	Lichtrendement (gespec.) (nom.)	Lichtstroom
	DIA-VLC-E C WH P					8718699983406	DN473B - graden LED30S/840		4000 K	128 lm/W	2.700 lm
8718699983260	DN471B - graden LED30S/830		3000 K	130 lm/W	2.700 lm		DIA-VLC-E C WH PCC P				
	DIA-VLC-E C ELP3 WH P					8720169013094	DN471B - graden LED20S/830		3000 K	135 lm/W	1.800 lm
8718699983277	DN471B - graden LED30S/830		3000 K	130 lm/W	2.700 lm		PSD-E C WH P				
	DIA-VLC-E C WH P					8720169013100	DN471B - graden LED20S/840		4000 K	139 lm/W	1.850 lm
8718699983284	DN471B - graden LED30S/840		4000 K	134 lm/W	2.800 lm		PSD-E C WH P				
	DIA-VLC-E C ELP3 WH P					8718699384746	DN473B - graden LED20S/830		3000 K	130 lm/W	1.750 lm
8718699983291	DN471B - graden LED30S/840		4000 K	134 lm/W	2.800 lm		PSU-E C WH PCC P				
	DIA-VLC-E C WH P					8718699384753	DN473B - graden LED20S/840		4000 K	134 lm/W	1.800 lm
8718699983376	DN473B - graden LED20S/830		3000 K	126 lm/W	1.750 lm		PSU-E C WH PCC P				
	DIA-VLC-E C WH PCC P					8718699793319	DN471B - graden LED20S/830		3000 K	137 lm/W	1.800 lm
8718699983383	DN473B - graden LED20S/840		4000 K	130 lm/W	1.800 lm		PSU-E C WH P				
	DIA-VLC-E C WH PCC P					8718699793326	DN471B - graden LED20S/840		4000 K	141 lm/W	1.850 lm
8718699983390	DN473B - graden LED30S/830		3000 K	124 lm/W	2.600 lm		PSU-E C WH P				
	DIA-VLC-E C WH PCC P					8718699793555	DN471B - graden LED20S/830		3000 K	137 lm/W	1.800 lm
						8718699793562	DN471B - graden LED20S/840		4000 K	141 lm/W	1.850 lm

## GreenSpace 2 DN460B/DN461B/DN470B/DN471B

Order Code	Full Product Name	Bundelhoek lichtbron	Gecorreleerde kleurtemperatuur (nom.)	Lichtrendement (gespec.) (nom.)	Lichtstroom	Order Code	Full Product Name	Bundelhoek lichtbron	Gecorreleerde kleurtemperatuur (nom.)	Lichtrendement (gespec.) (nom.)	Lichtstroom
	ELP3 WH P					8718699983017	DN470B LED20S/ 830 DIA- VLC-E C WH P	- graden	3000 K	139 lm/W	1.900 lm
8718699945831	DN471B LED30S/ 830 PSU-E C WH P	- graden	3000 K	131 lm/W	2.700 lm						
8718699945848	DN471B LED30S/ 840 PSU-E C WH P	- graden	4000 K	135 lm/W	2.800 lm	8718699983024	DN470B LED20S/ 840 DIA- VLC-E C ELP3 WH P	- graden	4000 K	143 lm/W	1.950 lm
8718699945954	DN471B LED30S/ 830 PSU-E C ELP3 WH P	- graden	3000 K	131 lm/W	2.700 lm	8718699983055	DN470B LED20S/ 840 WIA-E C WH P	- graden	4000 K	148 lm/W	1.950 lm
8718699945961	DN471B LED30S/ 840 PSU-E C ELP3 WH P	- graden	4000 K	135 lm/W	2.800 lm	8718699983116	DN472B LED20S/ 830 WIA-E C WH PCC P	- graden	3000 K	137 lm/W	1.800 lm
8719514574427	TCTT175 20S/830 PSU-E WH	90 graden	3000 K	135 lm/W	1.797 lm	8718699983130	DN472B LED20S/ 840 WIA-E C WH PCC P	- graden	4000 K	141 lm/W	1.850 lm
8719514581371	TCTT175 20S/840 PSU-E WH	90 graden	4000 K	139 lm/W	1.849 lm	8718699983185	DN470B LED30S/ 830 DIA- VLC-E C ELP3 WH P	- graden	3000 K	137 lm/W	2.900 lm
8720169838956	DN500B 20S/840 PSU-E C GR	-	4000 K	157 lm/W	2.100 lm	8718699983192	DN470B LED30S/ 830 DIA- VLC-E C WH P	- graden	3000 K	137 lm/W	2.900 lm
8718699982997	DN470B LED11S/ 840 DIA- VLC-E C WH P	- graden	4000 K	138 lm/W	1.200 lm	8718699983208	DN470B LED30S/ 840 DIA- VLC-E C ELP3 WH P	- graden	4000 K	141 lm/W	2.900 lm
8718699983000	DN470B LED20S/ 830 DIA- VLC-E C ELP3 WH P	- graden	3000 K	139 lm/W	1.900 lm						

## GreenSpace 2 DN460B/DN461B/DN470B/DN471B

Order Code	Full		Gecorreleerde		Lichtrendement		Order Code	Full		Gecorreleerde		Lichtrendement	
	Product Name	Bundelhoek lichtbron	kleurtemperatuur (nom.)	kleurtemperatuur (nom.)	(gespec.) (nom.)	Lichtstroom		Product Name	Bundelhoek lichtbron	kleurtemperatuur (nom.)	kleurtemperatuur (nom.)	(gespec.) (nom.)	Lichtstroom
8718699983215	DN470B LED30S/ 840 DIA- VLC-E C WH P	- graden	4000 K	141 lm/W	2.900 lm		8720169013070	DN470B LED20S/ 840 PSD-E C WH P	-	4000 K	146 lm/W	1.950 lm	
8718699983307	DN472B LED20S/ 830 DIA- VLC-E C WH PCC P	- graden	3000 K	133 lm/W	1.800 lm		8720169013087	DN470B LED30S/ 840 PSD-E C WH P	-	4000 K	139 lm/W	2.900 lm	
8718699983321	DN472B LED20S/ 840 DIA- VLC-E C WH PCC P	- graden	4000 K	136 lm/W	1.850 lm		8718699384708	DN472B LED20S/ 830 PSU-E C WH PCC P	- graden	3000 K	137 lm/W	1.800 lm	
8718699983345	DN472B LED30S/ 830 DIA- VLC-E C WH PCC P	- graden	3000 K	130 lm/W	2.700 lm		8718699384715	DN472B LED20S/ 840 PSU-E C WH PCC P	- graden	4000 K	141 lm/W	1.850 lm	
8718699983352	DN472B LED30S/ 840 DIA- VLC-E C WH PCC P	- graden	4000 K	134 lm/W	2.800 lm		8718699793272	DN470B LED20S/ 830 PSU-E C WH P	- graden	3000 K	143 lm/W	1.900 lm	
8718699983666	DN470B LED20S/ 830 WIA-E C WH P	- graden	3000 K	144 lm/W	1.900 lm		8718699793289	DN470B LED20S/ 840 PSU-E C WH P	- graden	4000 K	147 lm/W	1.950 lm	
8720169012905	DN470B LED20S/ 830 PSD-E C WH P	-	3000 K	142 lm/W	1.900 lm		8718699793517	DN470B LED20S/ 830 PSU-E C ELP3 WH P	- graden	3000 K	143 lm/W	1.900 lm	
8720169012912	DN470B LED30S/ 830 PSD-E C WH P	-	3000 K	136 lm/W	2.900 lm		8718699793524	DN470B LED20S/ 840 PSU-E C ELP3 WH P	- graden	4000 K	147 lm/W	1.950 lm	
							8718699945756	DN470B LED30S/ 830 PSU-E C WH P	- graden	3000 K	137 lm/W	2.900 lm	

## GreenSpace 2 DN460B/DN461B/DN470B/DN471B

Order Code	Full		Gecorreleerde		Lichtrendement		Order Code	Full		Gecorreleerde		Lichtrendement	
	Product	Bundelhoek	kleurtemperatuur	(nom.)	(gespec.)	Lichtstroom		Product	Bundelhoek	kleurtemperatuur	(nom.)	(gespec.)	Lichtstroom
8718699945763	DN470B LED30S/ 840 PSU-E C WH P	- graden	4000 K	141 lm/W	2.900 lm		DIA- VLC-E C WH P						
8718699945916	DN470B LED30S/ 830 PSU-E C ELP3 WH P	- graden	3000 K	137 lm/W	2.900 lm		8718699982553 DN460B LED20S/ 840 DIA- VLC-E C WH P	- graden	4000 K	135 lm/W	1.850 lm		
8718699945923	DN470B LED30S/ 840 PSU-E C ELP3 WH P	- graden	4000 K	141 lm/W	2.900 lm		8718699982928 DN462B LED11S/ 830 DIA- VLC-E C WH PCC P	- graden	3000 K	122 lm/W	1.050 lm		
8720169839069	DN510B 20S/840 PSU-E WR WH PCO	-	4000 K	146 lm/W	1.950 lm		8718699982942 DN462B LED11S/ 840 DIA- VLC-E C WH PCC P	- graden	4000 K	126 lm/W	1.100 lm		
8720169838635	DN500B 11S/830 PSU-E C WH	-	3000 K	149 lm/W	1.150 lm		8720169013032 DN460B LED11S/ 830 PSD-E C WH P	-	3000 K	134 lm/W	1.100 lm		
8720169838932	DN500B 20S/830 PSU-E C WH	-	3000 K	146 lm/W	1.950 lm		8720169013049 DN460B LED11S/ 840 PSD-E C WH P	-	4000 K	138 lm/W	1.150 lm		
8720169838949	DN500B 20S/840 PSU-E C WH	-	4000 K	157 lm/W	2.100 lm		8718699384623 DN462B LED11S/ 830 PSU-E C WH PCC P	- graden	3000 K	127 lm/W	1.050 lm		
8718699982522	DN460B LED11S/ 830 DIA- VLC-E C ELP3 WH P	- graden	3000 K	128 lm/W	1.100 lm		8718699793197 DN460B LED11S/ 830 PSU-E C WH P	- graden	3000 K	133 lm/W	1.100 lm		
8718699982539	DN460B LED11S/ 830 DIA- VLC-E C WH P	- graden	3000 K	128 lm/W	1.100 lm		8718699793203 DN460B LED11S/ 840 PSU-E C WH P	- graden	4000 K	137 lm/W	1.150 lm		
8718699982546	DN460B LED11S/ 840	- graden	4000 K	132 lm/W	1.150 lm								

## GreenSpace 2 DN460B/DN461B/DN470B/DN471B

Order Code	Full		Gecorreleerde		Lichtrendement		Order Code	Full		Gecorreleerde		Lichtrendement	
	Product Name	Bundelhoek lichtbron	kleurtemperatuur (nom.)	kleurtemperatuur (nom.)	(gespec.) (nom.)	Lichtstroom		Product Name	Bundelhoek lichtbron	kleurtemperatuur (nom.)	kleurtemperatuur (nom.)	(gespec.) (nom.)	Lichtstroom
8718699793395	DN460B LED11S/ 830 PSU-E C ELP3 WH P	- graden	3000 K	133 lm/W	1.100 lm		WH PCO P						
8718699793401	DN460B LED11S/ 840 PSU-E C ELP3 WH P	- graden	4000 K	137 lm/W	1.150 lm		DN472B LED11S/ 830 PSD-E C WH PCO P	-	3000 K	115 lm/W	940 lm		
8718699982935	DN462B LED11S/ 830 DIA- VLC-E C WH PCO P	- graden	3000 K	114 lm/W	980 lm		DN472B LED11S/ 840 PSD-E C WH PCO P	-	4000 K	118 lm/W	960 lm		
8718699982959	DN462B LED11S/ 840 DIA- VLC-E C WH PCO P	- graden	4000 K	118 lm/W	1.000 lm		DN472B LED20S/ 830 PSU-E C WH PCO P	- graden	3000 K	121 lm/W	1.600 lm		
8718699793357	DN462B LED11S/ 830 PSU-E C WH PCO P	- graden	3000 K	119 lm/W	980 lm		DN472B LED20S/ 840 PSU-E C WH PCO P	- graden	4000 K	125 lm/W	1.650 lm		
8718699793364	DN462B LED11S/ 840 PSU-E C WH PCO P	- graden	4000 K	122 lm/W	1.000 lm		DN510B 20S/840 PSU-E OC WH	-	4000 K	149 lm/W	2.000 lm		
8718699983314	DN472B LED20S/ 830 DIA- VLC-E C WH PCO P	- graden	3000 K	118 lm/W	1.600 lm		DN510B 30S/840 PSU-E OC WH	-	4000 K	156 lm/W	3.000 lm		
8718699983338	DN472B LED20S/ 840 DIA- VLC-E C	- graden	4000 K	121 lm/W	1.650 lm		TCTT180 20S/840 PSU-E WH281	90 graden	4000 K	139 lm/W	1.849 lm		
							TCTT180 20S/830 PSU-E WH	90 graden	3000 K	135 lm/W	1.797 lm		
							DN500B 20S/840 PSU-E C BK	-	4000 K	157 lm/W	2.100 lm		
							DN510B 20S/840 PSU-E	-	4000 K	146 lm/W	1.950 lm		

## GreenSpace 2 DN460B/DN461B/DN470B/DN471B

Order Code	Full Product Name	Bundelhoek lichtbron	Gecorreleerde kleurtemperatuur (nom.)	Lichtrendement (gespec.) (nom.)	Lichtstroom	Order Code	Full Product Name	Bundelhoek lichtbron	Gecorreleerde kleurtemperatuur (nom.)	Lichtrendement (gespec.) (nom.)	Lichtstroom
	OC WH PCC						PSU-E WH				
8720169839038	DN510B 20S/840 PSU-E C BK	-	4000 K	157 lm/W	2.100 lm	8719514563988	TCTT160 11S/840 PSU-E WH	90 graden	4000 K	138 lm/W	1.130 lm
8720169839052	DN510B 20S/840 PSU-E C WH PCC	-	4000 K	149 lm/W	2.000 lm	8720169081888	TCTT160 11S/830 PSU-E WH	90 graden	3000 K	134 lm/W	1.098 lm
8720169838642	DN510B 20S/830 PSU-E C WH	-	3000 K	146 lm/W	1.950 lm	8720169838987	DN500B 20S/840 PSU-E C WH PCC	-	4000 K	149 lm/W	2.000 lm
8720169839014	DN510B 20S/840 PSU-E C WH	-	4000 K	157 lm/W	2.100 lm	8720169838994	DN500B 20S/840 PSU-E WR WH PCO	-	4000 K	138 lm/W	1.850 lm
8720169839083	DN510B 30S/840 PSU-E C WH	-	4000 K	161 lm/W	3.100 lm	8719514564107	TCTT230 20S/840 PSU-E WH	90 graden	4000 K	148 lm/W	1.964 lm
8719514564091	TCTT225 20S/840 PSU-E WH	90 graden	4000 K	148 lm/W	1.964 lm	8719514573963	TCTT230 20S/830 PSU-E WH	90 graden	3000 K	144 lm/W	1.909 lm
8719514573925	TCTT225 20S/830	90 graden	3000 K	144 lm/W	1.909 lm	8720169839021	DN510B 20S/840 PSU-E C GR	-	4000 K	157 lm/W	2.100 lm

### Gegevens lichttechniek (2/2)

Order Code	Full Product Name	Aantal lichtbronnen	Optiektype	Lichtvervuiling naar boven (ULR)	Order Code	Full Product Name	Aantal lichtbronnen	Optiektype	Lichtvervuiling naar boven (ULR)
8718699982560	DN461B LED11S/830 DIA- VLC-E C ELP3 WH P	-	-	0	8718699982591	DN461B LED11S/840 DIA- VLC-E C WH P	-	-	0
8718699982577	DN461B LED11S/830 DIA- VLC-E C WH P	-	-	0	8718699982911	DN461B LED20S/840 DIA- VLC-E C WH P	-	-	0
8718699982584	DN461B LED11S/840 DIA- VLC-E C ELP3 WH P	-	-	0	8718699982973	DN463B LED11S/830 DIA- VLC-E C WH PCC P	-	-	0
					8718699982980	DN463B LED11S/840 DIA-	-	-	0

## GreenSpace 2 DN460B/DN461B/DN470B/DN471B

Order Code	Full Product Name	Aantal lichtbronnen	Optiektype	Lichtvervuiling naar boven (ULR)
	VLC-E C WH PCC P			
8720169013056	DN461B LED11S/830 PSD-E C WH P	-	-	0
8720169013063	DN461B LED11S/840 PSD-E C WH P	-	-	0
8718699384661	DN463B LED11S/830 PSU-E C WH PCC P	1	-	-
8718699384678	DN463B LED11S/840 PSU-E C WH PCC P	1	-	-
8718699793234	DN461B LED11S/830 PSU-E C WH P	1	-	-
8718699793241	DN461B LED11S/840 PSU-E C WH P	1	-	-
8718699793432	DN461B LED11S/830 PSU-E C ELP3 WH P	1	-	-
8718699793449	DN461B LED11S/840 PSU-E C ELP3 WH P	1	-	-
8720169838970	DN500B 20S/840 PSU-E OC WH	1	Hoogglanzende spiegel	-
8719514563995	TCTT165 11S/840 PSU-E WH	-	Bundelhoek 90°	-
8719514577046	TCTT165 11S/830 PSU-E WH	-	Bundelhoek 90°	-
8720169839007	DN500B 20S/840 PSU-E OC WH PCC	1	Hoogglanzende spiegel	-
8718699983079	DN471B LED20S/830 WIA-E C WH P	-	-	0
8718699983093	DN471B LED20S/840 WIA-E C WH P	-	-	0
8718699983222	DN471B LED20S/830 DIA-VLC-E C ELP3 WH P	-	-	0
8718699983239	DN471B LED20S/830 DIA-VLC-E C WH P	-	-	0
8718699983246	DN471B LED20S/840 DIA-	-	-	0

Order Code	Full Product Name	Aantal lichtbronnen	Optiektype	Lichtvervuiling naar boven (ULR)
	VLC-E C ELP3 WH P			
8718699983253	DN471B LED20S/840 DIA-VLC-E C WH P	-	-	0
8718699983260	DN471B LED30S/830 DIA-VLC-E C ELP3 WH P	-	-	0
8718699983277	DN471B LED30S/830 DIA-VLC-E C WH P	-	-	0
8718699983284	DN471B LED30S/840 DIA-VLC-E C ELP3 WH P	-	-	0
8718699983291	DN471B LED30S/840 DIA-VLC-E C WH P	-	-	0
8718699983376	DN473B LED20S/830 DIA-VLC-E C WH PCC P	-	-	0
8718699983383	DN473B LED20S/840 DIA-VLC-E C WH PCC P	-	-	0
8718699983390	DN473B LED30S/830 DIA-VLC-E C WH PCC P	-	-	0
8718699983406	DN473B LED30S/840 DIA-VLC-E C WH PCC P	-	-	0
8720169013094	DN471B LED20S/830 PSD-E C WH P	-	-	0
8720169013100	DN471B LED20S/840 PSD-E C WH P	-	-	0
8718699384746	DN473B LED20S/830 PSU-E C WH PCC P	1	-	-
8718699384753	DN473B LED20S/840 PSU-E C WH PCC P	1	-	-

## GreenSpace 2 DN460B/DN461B/DN470B/DN471B

Order Code	Full Product Name	Aantal lichtbronnen	Optiektype	Lichtvervuiling naar boven (ULR)
8718699793319	DN471B LED20S/830 PSU-E C WH P	1	-	-
8718699793326	DN471B LED20S/840 PSU-E C WH P	1	-	-
8718699793555	DN471B LED20S/830 PSU-E C ELP3 WH P	1	-	-
8718699793562	DN471B LED20S/840 PSU-E C ELP3 WH P	1	-	-
8718699945831	DN471B LED30S/830 PSU-E C WH P	-	-	-
8718699945848	DN471B LED30S/840 PSU-E C WH P	-	-	-
8718699945954	DN471B LED30S/830 PSU-E C ELP3 WH P	-	-	-
8718699945961	DN471B LED30S/840 PSU-E C ELP3 WH P	-	-	-
8719514574427	TCTT175 20S/830 PSU-E WH	-	Bundelhoek 90°	-
8719514581371	TCTT175 20S/840 PSU-E WH	-	Bundelhoek 90°	-
8720169838956	DN500B 20S/840 PSU-E C GR	1	Hoogglanzende spiegel	-
8718699982997	DN470B LED11S/840 DIA- VLC-E C WH P	-	-	0
8718699983000	DN470B LED20S/830 DIA- VLC-E C ELP3 WH P	-	-	0
8718699983017	DN470B LED20S/830 DIA- VLC-E C WH P	-	-	0
8718699983024	DN470B LED20S/840 DIA- VLC-E C ELP3 WH P	-	-	0

Order Code	Full Product Name	Aantal lichtbronnen	Optiektype	Lichtvervuiling naar boven (ULR)
8718699983055	DN470B LED20S/840 WIA-E C WH P	-	-	0
8718699983116	DN472B LED20S/830 WIA-E C WH PCC P	-	-	0
8718699983130	DN472B LED20S/840 WIA-E C WH PCC P	-	-	0
8718699983185	DN470B LED30S/830 DIA- VLC-E C ELP3 WH P	-	-	0
8718699983192	DN470B LED30S/830 DIA- VLC-E C WH P	-	-	0
8718699983208	DN470B LED30S/840 DIA- VLC-E C ELP3 WH P	-	-	0
8718699983215	DN470B LED30S/840 DIA- VLC-E C WH P	-	-	0
8718699983307	DN472B LED20S/830 DIA- VLC-E C WH PCC P	-	-	0
8718699983321	DN472B LED20S/840 DIA- VLC-E C WH PCC P	-	-	0
8718699983345	DN472B LED30S/830 DIA- VLC-E C WH PCC P	-	-	0
8718699983352	DN472B LED30S/840 DIA- VLC-E C WH PCC P	-	-	0
8718699983666	DN470B LED20S/830 WIA-E C WH P	-	-	0
8720169012905	DN470B LED20S/830 PSD-E C WH P	-	-	0
8720169012912	DN470B LED30S/830 PSD-E C WH P	-	-	0

## GreenSpace 2 DN460B/DN461B/DN470B/DN471B

Order Code	Full Product Name	Aantal lichtbronnen	Optiektype	Lichtvervuiling naar boven (ULR)
8720169013070	DN470B LED20S/840 PSD-E C WH P	-	-	0
8720169013087	DN470B LED30S/840 PSD-E C WH P	-	-	0
8718699384708	DN472B LED20S/830 PSU-E C WH PCC P	1	-	-
8718699384715	DN472B LED20S/840 PSU-E C WH PCC P	1	-	-
8718699793272	DN470B LED20S/830 PSU-E C WH P	1	-	-
8718699793289	DN470B LED20S/840 PSU-E C WH P	1	-	-
8718699793517	DN470B LED20S/830 PSU-E C ELP3 WH P	1	-	-
8718699793524	DN470B LED20S/840 PSU-E C ELP3 WH P	1	-	-
8718699945756	DN470B LED30S/830 PSU-E C WH P	-	-	-
8718699945763	DN470B LED30S/840 PSU-E C WH P	-	-	-
8718699945916	DN470B LED30S/830 PSU-E C ELP3 WH P	-	-	-
8718699945923	DN470B LED30S/840 PSU-E C ELP3 WH P	-	-	-
8720169839069	DN510B 20S/840 PSU-E WR WH PCO	1	Hoogglanzende spiegel	-
8720169838635	DN500B 11S/830 PSU-E C WH	1	Hoogglanzende spiegel	-
8720169838932	DN500B 20S/830 PSU-E C WH	1	Hoogglanzende spiegel	-

Order Code	Full Product Name	Aantal lichtbronnen	Optiektype	Lichtvervuiling naar boven (ULR)
8720169838949	DN500B 20S/840 PSU-E C WH	1	Hoogglanzende spiegel	-
8718699982522	DN460B LED11S/830 DIA- VLC-E C ELP3 WH P	-	-	0
8718699982539	DN460B LED11S/830 DIA- VLC-E C WH P	-	-	0
8718699982546	DN460B LED11S/840 DIA- VLC-E C WH P	-	-	0
8718699982553	DN460B LED20S/840 DIA- VLC-E C WH P	-	-	0
8718699982928	DN462B LED11S/830 DIA- VLC-E C WH PCC P	-	-	0
8718699982942	DN462B LED11S/840 DIA- VLC-E C WH PCC P	-	-	0
8720169013032	DN460B LED11S/830 PSD- E C WH P	-	-	0
8720169013049	DN460B LED11S/840 PSD- E C WH P	-	-	0
8718699384623	DN462B LED11S/830 PSU- E C WH PCC P	1	-	-
8718699793197	DN460B LED11S/830 PSU- E C WH P	1	-	-
8718699793203	DN460B LED11S/840 PSU- E C WH P	1	-	-
8718699793395	DN460B LED11S/830 PSU- E C ELP3 WH P	1	-	-
8718699793401	DN460B LED11S/840 PSU- E C ELP3 WH P	1	-	-
8718699982935	DN462B LED11S/830 DIA- VLC-E C WH PCO P	-	-	0
8718699982959	DN462B LED11S/840 DIA-	-	-	0

## GreenSpace 2 DN460B/DN461B/DN470B/DN471B

Order Code	Full Product Name	Aantal lichtbronnen	Optiektype	Lichtvervuiling naar boven (ULR)
	VLC-E C WH PCO P			
8718699793357	DN462B LED11S/830 PSU-E C WH PCO P	1	-	-
8718699793364	DN462B LED11S/840 PSU-E C WH PCO P	1	-	-
871869983314	DN472B LED20S/830 DIA-VLC-E C WH PCO P	-	-	0
871869983338	DN472B LED20S/840 DIA-VLC-E C WH PCO P	-	-	0
8720169013117	DN472B LED11S/830 PSD-E C WH PCO P	-	-	0
8720169013124	DN472B LED11S/840 PSD-E C WH PCO P	-	-	0
8718699793470	DN472B LED20S/830 PSU-E C WH PCO P	1	-	-
8718699793487	DN472B LED20S/840 PSU-E C WH PCO P	1	-	-
8720169839045	DN510B 20S/840 PSU-E OC WH	1	Hoogglanzende spiegel	-
8720169839090	DN510B 30S/840 PSU-E OC WH	1	Hoogglanzende spiegel	-
8719514567955	TCTT180 20S/840 PSU-E WH281	-	Bundelhoek 90°	-

Order Code	Full Product Name	Aantal lichtbronnen	Optiektype	Lichtvervuiling naar boven (ULR)
8720169081567	TCTT180 20S/830 PSU-E WH	-	Bundelhoek 90°	-
8720169838963	DN500B 20S/840 PSU-E C BK	1	Hoogglanzende spiegel	-
8720169839076	DN510B 20S/840 PSU-E OC WH PCC	1	Hoogglanzende spiegel	-
8720169839038	DN510B 20S/840 PSU-E C BK	1	Hoogglanzende spiegel	-
8720169839052	DN510B 20S/840 PSU-E C WH PCC	1	Hoogglanzende spiegel	-
8720169838642	DN510B 20S/830 PSU-E C WH	1	Hoogglanzende spiegel	-
8720169839014	DN510B 20S/840 PSU-E C WH	1	Hoogglanzende spiegel	-
8720169839083	DN510B 30S/840 PSU-E C WH	1	Hoogglanzende spiegel	-
8719514564091	TCTT225 20S/840 PSU-E WH	-	Bundelhoek 90°	-
8719514573925	TCTT225 20S/830 PSU-E WH	-	Bundelhoek 90°	-
8719514563988	TCTT160 11S/840 PSU-E WH	-	Bundelhoek 90°	-
8720169081888	TCTT160 11S/830 PSU-E WH	-	Bundelhoek 90°	-
8720169838987	DN500B 20S/840 PSU-E C WH PCC	1	Hoogglanzende spiegel	-
8720169838994	DN500B 20S/840 PSU-E WR WH PCO	1	Hoogglanzende spiegel	-
8719514564107	TCTT230 20S/840 PSU-E WH	-	Bundelhoek 90°	-
8719514573963	TCTT230 20S/830 PSU-E WH	-	Bundelhoek 90°	-
8720169839021	DN510B 20S/840 PSU-E C GR	1	Hoogglanzende spiegel	-

### Bedrijfs- en elektrische gegevens

Order Code	Full Product Name	Ingangsspanning	Energieverbruik	Geslacht voor willekeurige schakeling
8718699982560	DN461B LED11S/830 DIA-VLC-E C ELP3 WH P	220-240 V	8,6 W	Ja
8718699982577	DN461B LED11S/830 DIA-VLC-E C WH P	220-240 V	8,6 W	Ja

Order Code	Full Product Name	Ingangsspanning	Energieverbruik	Geslacht voor willekeurige schakeling
8718699982584	DN461B LED11S/840 DIA-VLC-E C ELP3 WH P	220-240 V	8,6 W	Ja
8718699982591	DN461B LED11S/840 DIA-VLC-E C WH P	220-240 V	8,6 W	Ja

## GreenSpace 2 DN460B/DN461B/DN470B/DN471B

Order Code	Full Product Name	Ingangsspanning	Energieverbruik	Geschiedt voor willekeurige schakeling
8718699982911	DN461B LED20S/840 DIA-VLC-E C WH P	220-240 V	13,7 W	Ja
8718699982973	DN463B LED11S/830 DIA-VLC-E C WH PCC P	220-240 V	8,6 W	Ja
8718699982980	DN463B LED11S/840 DIA-VLC-E C WH PCC P	220-240 V	8,6 W	Ja
8720169013056	DN461B LED11S/830 PSD-E C WH P	220-240 V	8,2 W	Ja
8720169013063	DN461B LED11S/840 PSD-E C WH P	220-240 V	8,2 W	Ja
8718699384661	DN463B LED11S/830 PSU-E C WH PCC P	220 tot 240 V	8,2 W	Ja
8718699384678	DN463B LED11S/840 PSU-E C WH PCC P	220 tot 240 V	8,2 W	Ja
8718699793234	DN461B LED11S/830 PSU-E C WH P	220-240 V	8,2 W	Ja
8718699793241	DN461B LED11S/840 PSU-E C WH P	220-240 V	8,2 W	Ja
8718699793432	DN461B LED11S/830 PSU-E C ELP3 WH P	220-240 V	8,2 W	Ja
8718699793449	DN461B LED11S/840 PSU-E C ELP3 WH P	220-240 V	8,2 W	Ja
8720169838970	DN500B 20S/840 PSU-E OC WH	220 tot 240 V	13,4 W	Nee
8719514563995	TCTT165 11S/840 PSU-E WH	220/240 V	8,2 W	Nee
8719514577046	TCTT165 11S/830 PSU-E WH	220/240 V	8,2 W	Nee
8720169839007	DN500B 20S/840 PSU-E OC WH PCC	220 tot 240 V	13,4 W	Nee
8718699983079	DN471B LED20S/830 WIA-E C WH P	220-240 V	13,2 W	Ja

Order Code	Full Product Name	Ingangsspanning	Energieverbruik	Geschiedt voor willekeurige schakeling
8718699983093	DN471B LED20S/840 WIA-E C WH P	220-240 V	13,2 W	Ja
8718699983222	DN471B LED20S/830 DIA-VLC-E C ELP3 WH P	220-240 V	13,7 W	Ja
8718699983239	DN471B LED20S/830 DIA-VLC-E C WH P	220-240 V	13,7 W	Ja
8718699983246	DN471B LED20S/840 DIA-VLC-E C ELP3 WH P	220-240 V	13,7 W	Ja
8718699983253	DN471B LED20S/840 DIA-VLC-E C WH P	220-240 V	13,7 W	Ja
8718699983260	DN471B LED30S/830 DIA-VLC-E C ELP3 WH P	220-240 V	20,9 W	Ja
8718699983277	DN471B LED30S/830 DIA-VLC-E C WH P	220-240 V	20,9 W	Ja
8718699983284	DN471B LED30S/840 DIA-VLC-E C ELP3 WH P	220-240 V	20,9 W	Ja
8718699983291	DN471B LED30S/840 DIA-VLC-E C WH P	220-240 V	20,9 W	Ja
8718699983376	DN473B LED20S/830 DIA-VLC-E C WH PCC P	220-240 V	13,7 W	Ja
8718699983383	DN473B LED20S/840 DIA-VLC-E C WH PCC P	220-240 V	13,7 W	Ja
8718699983390	DN473B LED30S/830 DIA-VLC-E C WH PCC P	220-240 V	20,9 W	Ja
8718699983406	DN473B LED30S/840 DIA-VLC-E C WH PCC P	220-240 V	20,9 W	Ja

## GreenSpace 2 DN460B/DN461B/DN470B/DN471B

Order Code	Full Product Name	Ingangsspanning	Energieverbruik	Geslacht voor willekeurige schakeling
8720169013094	DN471B LED20S/830 PSD- E C WH P	220-240 V	13,5 W	Ja
8720169013100	DN471B LED20S/840 PSD-E C WH P	220-240 V	13,5 W	Ja
8718699384746	DN473B LED20S/830 PSU- E C WH PCC P	220 tot 240 V	13,3 W	Ja
8718699384753	DN473B LED20S/840 PSU- E C WH PCC P	220 tot 240 V	13,3 W	Ja
8718699793319	DN471B LED20S/830 PSU- E C WH P	220-240 V	13,3 W	Ja
8718699793326	DN471B LED20S/840 PSU- E C WH P	220-240 V	13,3 W	Ja
8718699793555	DN471B LED20S/830 PSU- E C ELP3 WH P	220-240 V	13,3 W	Ja
8718699793562	DN471B LED20S/840 PSU- E C ELP3 WH P	220-240 V	13,3 W	Ja
8718699945831	DN471B LED30S/830 PSU- E C WH P	220-240 V	20,9 W	Ja
8718699945848	DN471B LED30S/840 PSU- E C WH P	220-240 V	20,9 W	Ja
8718699945954	DN471B LED30S/830 PSU- E C ELP3 WH P	220-240 V	20,9 W	Ja
8718699945961	DN471B LED30S/840 PSU- E C ELP3 WH P	220-240 V	20,9 W	Ja
8719514574427	TCTT175 20S/830 PSU-E WH	220/240 V	13,3 W	Nee
8719514581371	TCTT175 20S/840 PSU-E WH	220/240 V	13,3 W	Nee
8720169838956	DN500B 20S/840 PSU-E C GR	220 tot 240 V	13,4 W	Nee
8718699982997	DN470B LED11S/840 DIA- VLC-E C WH P	220-240 V	8,6 W	Ja
8718699983000	DN470B LED20S/830 DIA- VLC-E C ELP3 WH P	220-240 V	13,7 W	Ja

Order Code	Full Product Name	Ingangsspanning	Energieverbruik	Geslacht voor willekeurige schakeling
8718699983017	DN470B LED20S/830 DIA- VLC-E C WH P	220-240 V	13,7 W	Ja
8718699983024	DN470B LED20S/840 DIA- VLC-E C ELP3 WH P	220-240 V	13,7 W	Ja
8718699983055	DN470B LED20S/840 WIA- E C WH P	220-240 V	13,2 W	Ja
8718699983116	DN472B LED20S/830 WIA- E C WH PCC P	220-240 V	13,2 W	Ja
8718699983130	DN472B LED20S/840 WIA- E C WH PCC P	220-240 V	13,2 W	Ja
8718699983185	DN470B LED30S/830 DIA- VLC-E C ELP3 WH P	220-240 V	20,9 W	Ja
8718699983192	DN470B LED30S/830 DIA- VLC-E C WH P	220-240 V	20,9 W	Ja
8718699983208	DN470B LED30S/840 DIA- VLC-E C ELP3 WH P	220-240 V	20,9 W	Ja
8718699983215	DN470B LED30S/840 DIA- VLC-E C WH P	220-240 V	20,9 W	Ja
8718699983307	DN472B LED20S/830 DIA- VLC-E C WH PCC P	220-240 V	13,7 W	Ja
8718699983321	DN472B LED20S/840 DIA- VLC-E C WH PCC P	220-240 V	13,7 W	Ja
8718699983345	DN472B LED30S/830 DIA- VLC-E C WH PCC P	220-240 V	20,9 W	Ja
8718699983352	DN472B LED30S/840 DIA- VLC-E C WH PCC P	220-240 V	20,9 W	Ja
8718699983666	DN470B LED20S/830 WIA- E C WH P	220-240 V	13,2 W	Ja

## GreenSpace 2 DN460B/DN461B/DN470B/DN471B

Order Code	Full Product Name	Ingangsspanning	Energieverbruik	Geschiedt voor willekeurige schakeling
8720169012905	DN470B LED20S/830 PSD- E C WH P	220-240 V	13,5 W	Ja
8720169012912	DN470B LED30S/830 PSD- E C WH P	220-240 V	21,2 W	Ja
8720169013070	DN470B LED20S/840 PSD-E C WH P	220-240 V	13,5 W	Ja
8720169013087	DN470B LED30S/840 PSD-E C WH P	220-240 V	21,2 W	Ja
8718699384708	DN472B LED20S/830 PSU- E C WH PCC P	220 tot 240 V	13,3 W	Ja
8718699384715	DN472B LED20S/840 PSU- E C WH PCC P	220 tot 240 V	13,3 W	Ja
8718699793272	DN470B LED20S/830 PSU- E C WH P	220-240 V	13,3 W	Ja
8718699793289	DN470B LED20S/840 PSU- E C WH P	220-240 V	13,3 W	Ja
8718699793517	DN470B LED20S/830 PSU- E C ELP3 WH P	220-240 V	13,3 W	Ja
8718699793524	DN470B LED20S/840 PSU- E C ELP3 WH P	220-240 V	13,3 W	Ja
8718699945756	DN470B LED30S/830 PSU- E C WH P	220-240 V	20,9 W	Ja
8718699945763	DN470B LED30S/840 PSU- E C WH P	220-240 V	20,9 W	Ja
8718699945916	DN470B LED30S/830 PSU- E C ELP3 WH P	220-240 V	20,9 W	Ja
8718699945923	DN470B LED30S/840 PSU- E C ELP3 WH P	220-240 V	20,9 W	Ja
8720169839069	DN510B 20S/840 PSU-E WR WH PCO	220 tot 240 V	13,4 W	Nee
8720169838635	DN500B 11S/830 PSU-E C WH	220 tot 240 V	7,7 W	Nee
8720169838932	DN500B 20S/830 PSU-E C WH	220 tot 240 V	13,4 W	Nee

Order Code	Full Product Name	Ingangsspanning	Energieverbruik	Geschiedt voor willekeurige schakeling
8720169838949	DN500B 20S/840 PSU-E C WH	220 tot 240 V	13,4 W	Nee
8718699982522	DN460B LED11S/830 DIA- VLC-E C ELP3 WH P	220-240 V	8,6 W	Ja
8718699982539	DN460B LED11S/830 DIA- VLC-E C WH P	220-240 V	8,6 W	Ja
8718699982546	DN460B LED11S/840 DIA- VLC-E C WH P	220-240 V	8,6 W	Ja
8718699982553	DN460B LED20S/840 DIA- VLC-E C WH P	220-240 V	13,7 W	Ja
8718699982928	DN462B LED11S/830 DIA- VLC-E C WH PCC P	220-240 V	8,6 W	Ja
8718699982942	DN462B LED11S/840 DIA- VLC-E C WH PCC P	220-240 V	8,6 W	Ja
8720169013032	DN460B LED11S/830 PSD- E C WH P	220-240 V	8,2 W	Ja
8720169013049	DN460B LED11S/840 PSD- E C WH P	220-240 V	8,2 W	Ja
8718699384623	DN462B LED11S/830 PSU- E C WH PCC P	220 tot 240 V	8,2 W	Ja
8718699793197	DN460B LED11S/830 PSU- E C WH P	220-240 V	8,2 W	Ja
8718699793203	DN460B LED11S/840 PSU- E C WH P	220-240 V	8,2 W	Ja
8718699793395	DN460B LED11S/830 PSU- E C ELP3 WH P	220-240 V	8,2 W	Ja
8718699793401	DN460B LED11S/840 PSU- E C ELP3 WH P	220-240 V	8,2 W	Ja
8718699982935	DN462B LED11S/830 DIA- VLC-E C WH PCO P	220-240 V	8,6 W	Ja

## GreenSpace 2 DN460B/DN461B/DN470B/DN471B

Order Code	Full Product Name	Ingangsspanning	Energieverbruik	Geslacht voor willekeurige schakeling
8718699982959	DN462B LED11S/840 DIA-VLC-E C WH PCO P	220-240 V	8,6 W	Ja
8718699793357	DN462B LED11S/830 PSU-E C WH PCO P	220-240 V	8,2 W	Ja
8718699793364	DN462B LED11S/840 PSU-E C WH PCO P	220-240 V	8,2 W	Ja
8718699983314	DN472B LED20S/830 DIA-VLC-E C WH PCO P	220-240 V	13,7 W	Ja
8718699983338	DN472B LED20S/840 DIA-VLC-E C WH PCO P	220-240 V	13,7 W	Ja
8720169013117	DN472B LED11S/830 PSD-E C WH PCO P	220-240 V	8,2 W	Ja
8720169013124	DN472B LED11S/840 PSD-E C WH PCO P	220-240 V	8,2 W	Ja
8718699793470	DN472B LED20S/830 PSU-E C WH PCO P	220-240 V	13,3 W	Ja
8718699793487	DN472B LED20S/840 PSU-E C WH PCO P	220-240 V	13,3 W	Ja
8720169839045	DN510B 20S/840 PSU-E OC WH	220 tot 240 V	13,4 W	Nee
8720169839090	DN510B 30S/840 PSU-E OC WH	220 tot 240 V	19,2 W	Nee
8719514567955	TCTT180 20S/840 PSU-E WH281	220/240 V	13,3 W	Nee

Order Code	Full Product Name	Ingangsspanning	Energieverbruik	Geslacht voor willekeurige schakeling
8720169081567	TCTT180 20S/830 PSU-E WH	220/240 V	13,3 W	Nee
8720169838963	DN500B 20S/840 PSU-E C BK	220 tot 240 V	13,4 W	Nee
8720169839076	DN510B 20S/840 PSU-E OC WH PCC	220 tot 240 V	13,4 W	Nee
8720169839038	DN510B 20S/840 PSU-E C BK	220 tot 240 V	13,4 W	Nee
8720169839052	DN510B 20S/840 PSU-E C WH PCC	220 tot 240 V	13,4 W	Nee
8720169838642	DN510B 20S/830 PSU-E C WH	220 tot 240 V	13,4 W	Nee
8720169839014	DN510B 20S/840 PSU-E C WH	220 tot 240 V	13,4 W	Nee
8720169839083	DN510B 30S/840 PSU-E C WH	220 tot 240 V	19,2 W	Nee
8719514564091	TCTT225 20S/840 PSU-E WH	220/240 V	13,3 W	Nee
8719514573925	TCTT225 20S/830 PSU-E WH	220/240 V	13,3 W	Nee
8719514563988	TCTT160 11S/840 PSU-E WH	220/240 V	8,2 W	Nee
8720169081888	TCTT160 11S/830 PSU-E WH	220/240 V	8,2 W	Nee
8720169838987	DN500B 20S/840 PSU-E C WH PCC	220 tot 240 V	13,4 W	Nee
8720169838994	DN500B 20S/840 PSU-E WR WH PCO	220 tot 240 V	13,4 W	Nee
8719514564107	TCTT230 20S/840 PSU-E WH	220/240 V	13,3 W	Nee
8719514573963	TCTT230 20S/830 PSU-E WH	220/240 V	13,3 W	Nee
8720169839021	DN510B 20S/840 PSU-E C GR	220 tot 240 V	13,4 W	Nee

### Dimbaarheid en regelsystemen

Order Code	Full Product Name	Dimbaar	Maximaal dimniveau
8718699982560	DN461B LED11S/830 DIA-VLC-E C ELP3 WH P	Ja	1%
8718699982577	DN461B LED11S/830 DIA-VLC-E C WH P	Ja	1%
8718699982584	DN461B LED11S/840 DIA-VLC-E C ELP3 WH P	Ja	1%
8718699982591	DN461B LED11S/840 DIA-VLC-E C WH P	Ja	1%
8718699982911	DN461B LED20S/840 DIA-VLC-E C WH P	Ja	1%

Order Code	Full Product Name	Dimbaar	Maximaal dimniveau
8718699982973	DN463B LED11S/830 DIA-VLC-E C WH PCC P	Ja	1%
8718699982980	DN463B LED11S/840 DIA-VLC-E C WH PCC P	Ja	1%
8720169013056	DN461B LED11S/830 PSD-E C WH P	Ja	1%
8720169013063	DN461B LED11S/840 PSD-E C WH P	Ja	1%
8718699384661	DN463B LED11S/830 PSU-E C WH PCC P	Nee	Niet van toepassing

## GreenSpace 2 DN460B/DN461B/DN470B/DN471B

Order Code	Full Product Name	Dimbaar	Maximaal dimniveau
8718699384678	DN463B LED11S/840 PSU-E C WH PCC P	Nee	Niet van toepassing
8718699793234	DN461B LED11S/830 PSU-E C WH P	Nee	Niet van toepassing
8718699793241	DN461B LED11S/840 PSU-E C WH P	Nee	Niet van toepassing
8718699793432	DN461B LED11S/830 PSU-E C ELP3 WH P	Nee	Niet van toepassing
8718699793449	DN461B LED11S/840 PSU-E C ELP3 WH P	Nee	Niet van toepassing
8720169838970	DN500B 20S/840 PSU-E OC WH	Nee	-
8719514563995	TCTT165 11S/840 PSU-E WH	Nee	-
8719514577046	TCTT165 11S/830 PSU-E WH	Nee	-
8720169839007	DN500B 20S/840 PSU-E OC WH PCC	Nee	-
8718699983079	DN471B LED20S/830 WIA-E C WH P	Ja	1%
8718699983093	DN471B LED20S/840 WIA-E C WH P	Ja	1%
8718699983222	DN471B LED20S/830 DIA-VLC-E C ELP3 WH P	Ja	1%
8718699983239	DN471B LED20S/830 DIA-VLC-E C WH P	Ja	1%
8718699983246	DN471B LED20S/840 DIA-VLC-E C ELP3 WH P	Ja	1%
8718699983253	DN471B LED20S/840 DIA-VLC-E C WH P	Ja	1%
8718699983260	DN471B LED30S/830 DIA-VLC-E C ELP3 WH P	Ja	1%
8718699983277	DN471B LED30S/830 DIA-VLC-E C WH P	Ja	1%
8718699983284	DN471B LED30S/840 DIA-VLC-E C ELP3 WH P	Ja	1%
8718699983291	DN471B LED30S/840 DIA-VLC-E C WH P	Ja	1%
8718699983376	DN473B LED20S/830 DIA-VLC-E C WH PCC P	Ja	1%
8718699983383	DN473B LED20S/840 DIA-VLC-E C WH PCC P	Ja	1%
8718699983390	DN473B LED30S/830 DIA-VLC-E C WH PCC P	Ja	1%
8718699983406	DN473B LED30S/840 DIA-VLC-E C WH PCC P	Ja	1%
8720169013094	DN471B LED20S/830 PSD-E C WH P	Ja	1%
8720169013100	DN471B LED20S/840 PSD-E C WH P	Ja	1%
8718699384746	DN473B LED20S/830 PSU-E C WH PCC P	Nee	Niet van toepassing
8718699384753	DN473B LED20S/840 PSU-E C WH PCC P	Nee	Niet van toepassing
8718699793319	DN471B LED20S/830 PSU-E C WH P	Nee	Niet van toepassing
8718699793326	DN471B LED20S/840 PSU-E C WH P	Nee	Niet van toepassing
8718699793555	DN471B LED20S/830 PSU-E C ELP3 WH P	Nee	Niet van toepassing
8718699793562	DN471B LED20S/840 PSU-E C ELP3 WH P	Nee	Niet van toepassing

Order Code	Full Product Name	Dimbaar	Maximaal dimniveau
8718699945831	DN471B LED30S/830 PSU-E C WH P	Nee	Niet van toepassing
8718699945848	DN471B LED30S/840 PSU-E C WH P	Nee	Niet van toepassing
8718699945954	DN471B LED30S/830 PSU-E C ELP3 WH P	Nee	Niet van toepassing
8718699945961	DN471B LED30S/840 PSU-E C ELP3 WH P	Nee	Niet van toepassing
8719514574427	TCTT175 20S/830 PSU-E WH	Nee	-
8719514581371	TCTT175 20S/840 PSU-E WH	Nee	-
8720169838956	DN500B 20S/840 PSU-E C GR	Nee	-
8718699982997	DN470B LED11S/840 DIA-VLC-E C WH P	Ja	1%
8718699983000	DN470B LED20S/830 DIA-VLC-E C ELP3 WH P	Ja	1%
8718699983017	DN470B LED20S/830 DIA-VLC-E C WH P	Ja	1%
8718699983024	DN470B LED20S/840 DIA-VLC-E C ELP3 WH P	Ja	1%
8718699983055	DN470B LED20S/840 WIA-E C WH P	Ja	1%
8718699983116	DN472B LED20S/830 WIA-E C WH PCC P	Ja	1%
8718699983130	DN472B LED20S/840 WIA-E C WH PCC P	Ja	1%
8718699983185	DN470B LED30S/830 DIA-VLC-E C ELP3 WH P	Ja	1%
8718699983192	DN470B LED30S/830 DIA-VLC-E C WH P	Ja	1%
8718699983208	DN470B LED30S/840 DIA-VLC-E C ELP3 WH P	Ja	1%
8718699983215	DN470B LED30S/840 DIA-VLC-E C WH P	Ja	1%
8718699983307	DN472B LED20S/830 DIA-VLC-E C WH PCC P	Ja	1%
8718699983321	DN472B LED20S/840 DIA-VLC-E C WH PCC P	Ja	1%
8718699983345	DN472B LED30S/830 DIA-VLC-E C WH PCC P	Ja	1%
8718699983352	DN472B LED30S/840 DIA-VLC-E C WH PCC P	Ja	1%
8718699983666	DN470B LED20S/830 WIA-E C WH P	Ja	1%
8720169012905	DN470B LED20S/830 PSD-E C WH P	Ja	1%
8720169012912	DN470B LED30S/830 PSD-E C WH P	Ja	1%
8720169013070	DN470B LED20S/840 PSD-E C WH P	Ja	1%
8720169013087	DN470B LED30S/840 PSD-E C WH P	Ja	1%
8718699384708	DN472B LED20S/830 PSU-E C WH PCC P	Nee	Niet van toepassing
8718699384715	DN472B LED20S/840 PSU-E C WH PCC P	Nee	Niet van toepassing
8718699793272	DN470B LED20S/830 PSU-E C WH P	Nee	Niet van toepassing

## GreenSpace 2 DN460B/DN461B/DN470B/DN471B

Order Code	Full Product Name	Dimbaar	Maximaal dimniveau
8718699793289	DN470B LED20S/840 PSU-E C WH P	Nee	Niet van toepassing
8718699793517	DN470B LED20S/830 PSU-E C ELP3 WH P	Nee	Niet van toepassing
8718699793524	DN470B LED20S/840 PSU-E C ELP3 WH P	Nee	Niet van toepassing
8718699945756	DN470B LED30S/830 PSU-E C WH P	Nee	Niet van toepassing
8718699945763	DN470B LED30S/840 PSU-E C WH P	Nee	Niet van toepassing
8718699945916	DN470B LED30S/830 PSU-E C ELP3 WH P	Nee	Niet van toepassing
8718699945923	DN470B LED30S/840 PSU-E C ELP3 WH P	Nee	Niet van toepassing
8720169839069	DN510B 20S/840 PSU-E WR WH PCO	Nee	-
8720169838635	DN500B 11S/830 PSU-E C WH	Nee	-
8720169838932	DN500B 20S/830 PSU-E C WH	Nee	-
8720169838949	DN500B 20S/840 PSU-E C WH	Nee	-
8718699982522	DN460B LED11S/830 DIA-VLC-E C ELP3 WH P	Ja	1%
8718699982539	DN460B LED11S/830 DIA-VLC-E C WH P	Ja	1%
8718699982546	DN460B LED11S/840 DIA-VLC-E C WH P	Ja	1%
8718699982553	DN460B LED20S/840 DIA-VLC-E C WH P	Ja	1%
8718699982928	DN462B LED11S/830 DIA-VLC-E C WH PCC P	Ja	1%
8718699982942	DN462B LED11S/840 DIA-VLC-E C WH PCC P	Ja	1%
8720169013032	DN460B LED11S/830 PSD-E C WH P	Ja	1%
8720169013049	DN460B LED11S/840 PSD-E C WH P	Ja	1%
8718699384623	DN462B LED11S/830 PSU-E C WH PCC P	Nee	Niet van toepassing
8718699793197	DN460B LED11S/830 PSU-E C WH P	Nee	Niet van toepassing
8718699793203	DN460B LED11S/840 PSU-E C WH P	Nee	Niet van toepassing
8718699793395	DN460B LED11S/830 PSU-E C ELP3 WH P	Nee	Niet van toepassing
8718699793401	DN460B LED11S/840 PSU-E C ELP3 WH P	Nee	Niet van toepassing

Order Code	Full Product Name	Dimbaar	Maximaal dimniveau
8718699982935	DN462B LED11S/830 DIA-VLC-E C WH PCO P	Ja	1%
8718699982959	DN462B LED11S/840 DIA-VLC-E C WH PCO P	Ja	1%
8718699793357	DN462B LED11S/830 PSU-E C WH PCO P	Nee	Niet van toepassing
8718699793364	DN462B LED11S/840 PSU-E C WH PCO P	Nee	Niet van toepassing
8718699983314	DN472B LED20S/830 DIA-VLC-E C WH PCO P	Ja	1%
8718699983338	DN472B LED20S/840 DIA-VLC-E C WH PCO P	Ja	1%
8720169013117	DN472B LED11S/830 PSD-E C WH PCO P	Ja	1%
8720169013124	DN472B LED11S/840 PSD-E C WH PCO P	Ja	1%
8718699793470	DN472B LED20S/830 PSU-E C WH PCO P	Nee	Niet van toepassing
8718699793487	DN472B LED20S/840 PSU-E C WH PCO P	Nee	Niet van toepassing
8720169839045	DN510B 20S/840 PSU-E OC WH	Nee	-
8720169839090	DN510B 30S/840 PSU-E OC WH	Nee	-
8719514567955	TCTT180 20S/840 PSU-E WH281	Nee	-
8720169081567	TCTT180 20S/830 PSU-E WH	Nee	-
8720169838963	DN500B 20S/840 PSU-E C BK	Nee	-
8720169839076	DN510B 20S/840 PSU-E OC WH PCC	Nee	-
8720169839038	DN510B 20S/840 PSU-E C BK	Nee	-
8720169839052	DN510B 20S/840 PSU-E C WH PCC	Nee	-
8720169838642	DN510B 20S/830 PSU-E C WH	Nee	-
8720169839014	DN510B 20S/840 PSU-E C WH	Nee	-
8720169839083	DN510B 30S/840 PSU-E C WH	Nee	-
8719514564091	TCTT225 20S/840 PSU-E WH	Nee	-
8719514573925	TCTT225 20S/830 PSU-E WH	Nee	-
8719514563988	TCTT160 11S/840 PSU-E WH	Nee	-
8720169081888	TCTT160 11S/830 PSU-E WH	Nee	-
8720169838987	DN500B 20S/840 PSU-E C WH PCC	Nee	-
8720169838994	DN500B 20S/840 PSU-E WR WH PCO	Nee	-
8719514564107	TCTT230 20S/840 PSU-E WH	Nee	-
8719514573963	TCTT230 20S/830 PSU-E WH	Nee	-
8720169839021	DN510B 20S/840 PSU-E C GR	Nee	-

### Eigenschappen behuizing en afmetingen

Order Code	Full Product Name	Kleur behuizing	Beschermingsklasse
8718699982560	DN461B LED11S/830 DIA-VLC-E C ELP3 WH P	Wit	IP 20
8718699982577	DN461B LED11S/830 DIA-VLC-E C WH P	Wit	IP 20
8718699982584	DN461B LED11S/840 DIA-VLC-E C ELP3 WH P	Wit	IP 20

Order Code	Full Product Name	Kleur behuizing	Beschermingsklasse
8718699982591	DN461B LED11S/840 DIA-VLC-E C WH P	Wit	IP 20
8718699982911	DN461B LED20S/840 DIA-VLC-E C WH P	Wit	IP 20
8718699982973	DN463B LED11S/830 DIA-VLC-E C WH PCC P	Wit	IP 20/54

## GreenSpace 2 DN460B/DN461B/DN470B/DN471B

Order Code	Full Product Name	Kleur	
		behuizing	Beschermingsklasse
8718699982980	DN463B LED11S/840 DIA-VLC-E C WH PCC P	Wit	IP 20/54
8720169013056	DN461B LED11S/830 PSD-E C WH P	Wit	IP 20
8720169013063	DN461B LED11S/840 PSD-E C WH P	Wit	IP 20
8718699384661	DN463B LED11S/830 PSU-E C WH PCC P	Wit	IP 20/54
8718699384678	DN463B LED11S/840 PSU-E C WH PCC P	Wit	IP 20/54
8718699793234	DN461B LED11S/830 PSU-E C WH P	Wit	IP 20
8718699793241	DN461B LED11S/840 PSU-E C WH P	Wit	IP 20
8718699793432	DN461B LED11S/830 PSU-E C ELP3 WH P	Wit	IP 20
8718699793449	DN461B LED11S/840 PSU-E C ELP3 WH P	Wit	IP 20
8720169838970	DN500B 20S/840 PSU-E OC WH	Wit	IP 20
8719514563995	TCTT165 11S/840 PSU-E WH	Wit	IP 20
8719514577046	TCTT165 11S/830 PSU-E WH	Wit	IP 20
8720169839007	DN500B 20S/840 PSU-E OC WH PCC	Wit	IP 54/20
8718699983079	DN471B LED20S/830 WIA-E C WH P	Wit	IP 20
8718699983093	DN471B LED20S/840 WIA-E C WH P	Wit	IP 20
8718699983222	DN471B LED20S/830 DIA-VLC-E C ELP3 WH P	Wit	IP 20
8718699983239	DN471B LED20S/830 DIA-VLC-E C WH P	Wit	IP 20
8718699983246	DN471B LED20S/840 DIA-VLC-E C ELP3 WH P	Wit	IP 20
8718699983253	DN471B LED20S/840 DIA-VLC-E C WH P	Wit	IP 20
8718699983260	DN471B LED30S/830 DIA-VLC-E C ELP3 WH P	Wit	IP 20
8718699983277	DN471B LED30S/830 DIA-VLC-E C WH P	Wit	IP 20
8718699983284	DN471B LED30S/840 DIA-VLC-E C ELP3 WH P	Wit	IP 20
8718699983291	DN471B LED30S/840 DIA-VLC-E C WH P	Wit	IP 20
8718699983376	DN473B LED20S/830 DIA-VLC-E C WH PCC P	Wit	IP 20/54
8718699983383	DN473B LED20S/840 DIA-VLC-E C WH PCC P	Wit	IP 20/54
8718699983390	DN473B LED30S/830 DIA-VLC-E C WH PCC P	Wit	IP 20/54
8718699983406	DN473B LED30S/840 DIA-VLC-E C WH PCC P	Wit	IP 20/54

Order Code	Full Product Name	Kleur	
		behuizing	Beschermingsklasse
8720169013094	DN471B LED20S/830 PSD-E C WH P	Wit	IP 20
8720169013100	DN471B LED20S/840 PSD-E C WH P	Wit	IP 20
8718699384746	DN473B LED20S/830 PSU-E C WH PCC P	Wit	IP 20/54
8718699384753	DN473B LED20S/840 PSU-E C WH PCC P	Wit	IP 20/54
8718699793319	DN471B LED20S/830 PSU-E C WH P	Wit	IP 20
8718699793326	DN471B LED20S/840 PSU-E C WH P	Wit	IP 20
8718699793555	DN471B LED20S/830 PSU-E C ELP3 WH P	Wit	IP 20
8718699793562	DN471B LED20S/840 PSU-E C ELP3 WH P	Wit	IP 20
8718699945831	DN471B LED30S/830 PSU-E C WH P	Wit	IP 20
8718699945848	DN471B LED30S/840 PSU-E C WH P	Wit	IP 20
8718699945954	DN471B LED30S/830 PSU-E C ELP3 WH P	Wit	IP 20
8718699945961	DN471B LED30S/840 PSU-E C ELP3 WH P	Wit	IP 20
8719514574427	TCTT175 20S/830 PSU-E WH	Wit	IP 20
8719514581371	TCTT175 20S/840 PSU-E WH	Wit	IP 20
8720169838956	DN500B 20S/840 PSU-E C GR	Grijs	IP 20
8718699982997	DN470B LED11S/840 DIA-VLC-E C WH P	Wit	IP 20
8718699983000	DN470B LED20S/830 DIA-VLC-E C ELP3 WH P	Wit	IP 20
8718699983017	DN470B LED20S/830 DIA-VLC-E C WH P	Wit	IP 20
8718699983024	DN470B LED20S/840 DIA-VLC-E C ELP3 WH P	Wit	IP 20
8718699983055	DN470B LED20S/840 WIA-E C WH P	Wit	IP 20
8718699983116	DN472B LED20S/830 WIA-E C WH PCC P	Wit	IP 20/54
8718699983130	DN472B LED20S/840 WIA-E C WH PCC P	Wit	IP 20/54
8718699983185	DN470B LED30S/830 DIA-VLC-E C ELP3 WH P	Wit	IP 20
8718699983192	DN470B LED30S/830 DIA-VLC-E C WH P	Wit	IP 20
8718699983208	DN470B LED30S/840 DIA-VLC-E C ELP3 WH P	Wit	IP 20
8718699983215	DN470B LED30S/840 DIA-VLC-E C WH P	Wit	IP 20
8718699983307	DN472B LED20S/830 DIA-VLC-E C WH PCC P	Wit	IP 20/54

## GreenSpace 2 DN460B/DN461B/DN470B/DN471B

Order Code	Full Product Name	Kleur	
		behuizing	Beschermingsklasse
8718699983321	DN472B LED20S/840 DIA-VLC-E C WH PCC P	Wit	IP 20/54
8718699983345	DN472B LED30S/830 DIA-VLC-E C WH PCC P	Wit	IP 20/54
8718699983352	DN472B LED30S/840 DIA-VLC-E C WH PCC P	Wit	IP 20/54
8718699983666	DN470B LED20S/830 WIA-E C WH P	Wit	IP 20
8720169012905	DN470B LED20S/830 PSD-E C WH P	Wit	IP 20
8720169012912	DN470B LED30S/830 PSD-E C WH P	Wit	IP 20
8720169013070	DN470B LED20S/840 PSD-E C WH P	Wit	IP 20
8720169013087	DN470B LED30S/840 PSD-E C WH P	Wit	IP 20
87186999834708	DN472B LED20S/830 PSU-E C WH PCC P	Wit	IP 20/54
87186999834715	DN472B LED20S/840 PSU-E C WH PCC P	Wit	IP 20/54
87186999793272	DN470B LED20S/830 PSU-E C WH P	Wit	IP 20
87186999793289	DN470B LED20S/840 PSU-E C WH P	Wit	IP 20
87186999793517	DN470B LED20S/830 PSU-E C ELP3 WH P	Wit	IP 20
87186999793524	DN470B LED20S/840 PSU-E C ELP3 WH P	Wit	IP 20
8718699945756	DN470B LED30S/830 PSU-E C WH P	Wit	IP 20
8718699945763	DN470B LED30S/840 PSU-E C WH P	Wit	IP 20
8718699945916	DN470B LED30S/830 PSU-E C ELP3 WH P	Wit	IP 20
8718699945923	DN470B LED30S/840 PSU-E C ELP3 WH P	Wit	IP 20
8720169839069	DN510B 20S/840 PSU-E WR WH PCO	Wit	IP 54/20
8720169838635	DN500B 11S/830 PSU-E C WH	Grijs	IP 20
8720169838932	DN500B 20S/830 PSU-E C WH	Wit	IP 20
8720169838949	DN500B 20S/840 PSU-E C WH	Grijs	IP 20
8718699982522	DN460B LED11S/830 DIA-VLC-E C ELP3 WH P	Wit	IP 20
8718699982539	DN460B LED11S/830 DIA-VLC-E C WH P	Wit	IP 20
8718699982546	DN460B LED11S/840 DIA-VLC-E C WH P	Wit	IP 20
8718699982553	DN460B LED20S/840 DIA-VLC-E C WH P	Wit	IP 20
8718699982928	DN462B LED11S/830 DIA-VLC-E C WH PCC P	Wit	IP 20/54

Order Code	Full Product Name	Kleur	
		behuizing	Beschermingsklasse
8718699982942	DN462B LED11S/840 DIA-VLC-E C WH PCC P	Wit	IP 20/54
8720169013032	DN460B LED11S/830 PSD-E C WH P	Wit	IP 20
8720169013049	DN460B LED11S/840 PSD-E C WH P	Wit	IP 20
87186999834623	DN462B LED11S/830 PSU-E C WH PCC P	Wit	IP 20/54
87186999793197	DN460B LED11S/830 PSU-E C WH P	Wit	IP 20
87186999793203	DN460B LED11S/840 PSU-E C WH P	Wit	IP 20
87186999793395	DN460B LED11S/830 PSU-E C ELP3 WH P	Wit	IP 20
87186999793401	DN460B LED11S/840 PSU-E C ELP3 WH P	Wit	IP 20
8718699982935	DN462B LED11S/830 DIA-VLC-E C WH PCO P	Wit	IP 20/54
8718699982959	DN462B LED11S/840 DIA-VLC-E C WH PCO P	Wit	IP 20/54
87186999793357	DN462B LED11S/830 PSU-E C WH PCO P	Wit	IP 20/54
87186999793364	DN462B LED11S/840 PSU-E C WH PCO P	Wit	IP 20/54
8718699983314	DN472B LED20S/830 DIA-VLC-E C WH PCO P	Wit	IP 20/54
8718699983338	DN472B LED20S/840 DIA-VLC-E C WH PCO P	Wit	IP 20/54
8720169013117	DN472B LED11S/830 PSD-E C WH PCO P	Wit	IP 20/54
8720169013124	DN472B LED11S/840 PSD-E C WH PCO P	Wit	IP 20/54
87186999793470	DN472B LED20S/830 PSU-E C WH PCO P	Wit	IP 20/54
87186999793487	DN472B LED20S/840 PSU-E C WH PCO P	Wit	IP 20/54
8720169839045	DN510B 20S/840 PSU-E OC WH	Wit	IP 20
8720169839090	DN510B 30S/840 PSU-E OC WH	Wit	IP 20
8719514567955	TCTT180 20S/840 PSU-E WH281	Wit	IP 20
8720169081567	TCTT180 20S/830 PSU-E WH	Wit	IP 20
8720169838963	DN500B 20S/840 PSU-E C BK	Zwart	IP 20
8720169839076	DN510B 20S/840 PSU-E OC WH PCC	Grijs	IP 54/20
8720169839038	DN510B 20S/840 PSU-E C BK	Grijs	IP 20
8720169839052	DN510B 20S/840 PSU-E C WH PCC	Wit	IP 54/20
8720169838642	DN510B 20S/830 PSU-E C WH	Grijs	IP 20
8720169839014	DN510B 20S/840 PSU-E C WH	Wit	IP 20
8720169839083	DN510B 30S/840 PSU-E C WH	Wit	IP 20
8719514564091	TCTT225 20S/840 PSU-E WH	Wit	IP 20
8719514573925	TCTT225 20S/830 PSU-E WH	Wit	IP 20

## GreenSpace 2 DN460B/DN461B/DN470B/DN471B

Order Code	Full Product Name	Kleur		
		behuizing	Beschermingsklasse	
8719514563988	TCTT160 11S/840 PSU-E WH	Wit	IP 20	
8720169081888	TCTT160 11S/830 PSU-E WH	Wit	IP 20	
8720169838987	DN500B 20S/840 PSU-E C WH PCC	Wit	IP 54/20	
8720169838994	DN500B 20S/840 PSU-E WR WH PCO	Wit	IP 54/20	

Order Code	Full Product Name	Kleur	
		behuizing	Beschermingsklasse
8719514564107	TCTT230 20S/840 PSU-E WH	Wit	IP 20
8719514573963	TCTT230 20S/830 PSU-E WH	Wit	IP 20
8720169839021	DN510B 20S/840 PSU-E C GR	Grijs	IP 20

### Werking op noodstroom

Order Code	Full Product Name	Centrale noodpost	Noodverlichting	Noodstroom	Gespecificeerde levensduur van de noodverlichting (indien volledig opgeladen)
8718699982560	DN461B LED11S/8 30 DIA- VLC-E C ELP3 WH P	Nee	Noodverlichting gedurende 3 uur, Pro-uitvoering	390 lm	3 hr
8718699982577	DN461B LED11S/8 30 DIA- VLC-E C WH P	Nee	-	-	-
8718699982584	DN461B LED11S/8 40 DIA- VLC-E C ELP3 WH P	Nee	Noodverlichting gedurende 3 uur, Pro-uitvoering	390 lm	3 hr
8718699982591	DN461B LED11S/8 40 DIA- VLC-E C WH P	Nee	-	-	-
8718699982911	DN461B LED20S/840 DIA- VLC-E C WH P	Nee	-	-	-
8718699982973	DN463B LED11S/8 30 DIA- VLC-E C WH PCC P	Nee	-	-	-
8718699982980	DN463B LED11S/8 40 DIA-	Nee	-	-	-

Order Code	Full Product Name	Centrale noodpost	Noodverlichting	Noodstroom	Gespecificeerde levensduur van de noodverlichting (indien volledig opgeladen)
	VLC-E C WH PCC P				
8720169013056	DN461B LED11S/8 30 PSD- E C WH P	Nee	-	-	-
8720169013063	DN461B LED11S/8 40 PSD- E C WH P	Nee	-	-	-
8718699384661	DN463B LED11S/8 30 PSU- E C WH PCC P	Nee	-	-	-
8718699384678	DN463B LED11S/8 40 PSU- E C WH PCC P	Nee	-	-	-
8718699793234	DN461B LED11S/8 30 PSU- E C WH P	Nee	-	-	-
8718699793241	DN461B LED11S/8 40 PSU- E C WH P	Nee	-	-	-
8718699793432	DN461B LED11S/8 30 PSU-	Nee	Noodverlichting gedurende 3	-	3 hr

## GreenSpace 2 DN460B/DN461B/DN470B/DN471B

Order Code	Full Product Name	Centrale noodpost	Noodverlichting	Noodstroom	Gespecificeerde levensduur van de noodverlichting (indien volledig opgeladen)
	E C ELP3 WH P		uur, Pro- uitvoering		
8718699793449	DN461B LED11S/8 40 PSU- E C ELP3 WH P	Nee	Noodverlichting gedurende 3 uur, Pro- uitvoering	-	3 hr
8720169838970	DN500B 20S/840 PSU-E OC WH	-	-	-	-
8719514563995	TCTT165 11S/840 PSU-E WH	Nee	-	-	-
8719514577046	TCTT165 11S/830 PSU-E WH	Nee	-	-	-
8720169839007	DN500B 20S/840 PSU-E OC WH PCC	-	-	-	-
8718699983079	DN471B LED20S/ 830 WIA-E C WH P	Nee	-	-	-
8718699983093	DN471B LED20S/ 840 WIA-E C WH P	Nee	-	-	-
8718699983222	DN471B LED20S/ 830 DIA- VLC-E C ELP3 WH P	Nee	Noodverlichting gedurende 3 uur, Pro- uitvoering	380 lm	3 hr
8718699983239	DN471B LED20S/ 830 DIA- VLC-E C WH P	Nee	-	-	-
8718699983246	DN471B LED20S/	Nee	Noodverlichting gedurende 3	380 lm	3 hr

Order Code	Full Product Name	Centrale noodpost	Noodverlichting	Noodstroom	Gespecificeerde levensduur van de noodverlichting (indien volledig opgeladen)
	840 DIA- VLC-E C ELP3 WH P		uur, Pro- uitvoering		
8718699983253	DN471B LED20S/ 840 DIA- VLC-E C WH P	Nee	-	-	-
8718699983260	DN471B LED30S/ 830 DIA- VLC-E C ELP3 WH P	Nee	Noodverlichting gedurende 3 uur, Pro- uitvoering	380 lm	3 hr
8718699983277	DN471B LED30S/ 830 DIA- VLC-E C WH P	Nee	-	-	-
8718699983284	DN471B LED30S/ 840 DIA- VLC-E C ELP3 WH P	Nee	Noodverlichting gedurende 3 uur, Pro- uitvoering	380 lm	3 hr
8718699983291	DN471B LED30S/ 840 DIA- VLC-E C WH P	Nee	-	-	-
8718699983376	DN473B LED20S/ 830 DIA- VLC-E C WH PCC P	Nee	-	-	-
8718699983383	DN473B LED20S/ 840 DIA- VLC-E C WH PCC P	Nee	-	-	-
8718699983390	DN473B LED30S/ 830 DIA- VLC-E C	Nee	-	-	-

## GreenSpace 2 DN460B/DN461B/DN470B/DN471B

Order Code	Full Product Name	Centrale noodpost	Noodverlichting	Noodstroom	Gespecificeerde levensduur van de noodverlichting (indien volledig opgeladen)
	WH PCC P				
8718699983406	DN473B LED30S/ 840 DIA- VLC-E C WH PCC P	Nee	-	-	-
8720169013094	DN471B LED20S/ 830 PSD-E C WH P	Nee	-	-	-
8720169013100	DN471B LED20S/ 840 PSD-E C WH P	Nee	-	-	-
8718699384746	DN473B LED20S/ 830 PSU-E C WH PCC P	Nee	-	-	-
8718699384753	DN473B LED20S/ 840 PSU-E C WH PCC P	Nee	-	-	-
8718699793319	DN471B LED20S/ 830 PSU-E C WH P	Nee	-	-	-
8718699793326	DN471B LED20S/ 840 PSU-E C WH P	Nee	-	-	-
8718699793555	DN471B LED20S/ 830 PSU-E C ELP3 WH P	Nee	Noodverlichting gedurende 3 uur, Pro-uitvoering	-	3 hr

Order Code	Full Product Name	Centrale noodpost	Noodverlichting	Noodstroom	Gespecificeerde levensduur van de noodverlichting (indien volledig opgeladen)
8718699793562	DN471B LED20S/ 840 PSU-E C ELP3 WH P	Nee	Noodverlichting gedurende 3 uur, Pro-uitvoering	-	3 hr
8718699945831	DN471B LED30S/ 830 PSU-E C WH P	Nee	-	-	-
8718699945848	DN471B LED30S/ 840 PSU-E C WH P	Nee	-	-	-
8718699945954	DN471B LED30S/ 830 PSU-E C ELP3 WH P	Nee	Noodverlichting gedurende 3 uur, Pro-uitvoering	-	3 hr
8718699945961	DN471B LED30S/ 840 PSU-E C ELP3 WH P	Nee	Noodverlichting gedurende 3 uur, Pro-uitvoering	-	3 hr
8719514574427	TCTT175 20S/830 PSU-E WH	Nee	-	-	-
8719514581371	TCTT175 20S/840 PSU-E WH	Nee	-	-	-
8720169838956	DN500B 20S/840 PSU-E C GR	-	-	-	-
8718699982997	DN470B LED11S/8 40 DIA- VLC-E C WH P	Nee	-	-	-
8718699983000	DN470B LED20S/	Nee	Noodverlichting gedurende 3	398 lm	3 hr

## GreenSpace 2 DN460B/DN461B/DN470B/DN471B

Order Code	Full Product Name	Centrale noodpost	Noodverlichting	Noodstroom	Gespecificeerde levensduur van de noodverlichting (indien volledig opgeladen)	
					398 lm	3 hr
	830 DIA-VLC-E C ELP3 WH P		uur, Pro-uitvoering			
8718699983017	DN470B LED20S/830 DIA-VLC-E C WH P	Nee	-	-	-	
8718699983024	DN470B LED20S/840 DIA-VLC-E C ELP3 WH P	Nee	Noodverlichting gedurende 3 uur, Pro-uitvoering	398 lm	3 hr	
8718699983055	DN470B LED20S/840 WIA-E C WH P	Nee	-	-	-	
8718699983116	DN472B LED20S/830 WIA-E C WH PCC P	Nee	-	-	-	
8718699983130	DN472B LED20S/840 WIA-E C WH PCC P	Nee	-	-	-	
8718699983185	DN470B LED30S/830 DIA-VLC-E C ELP3 WH P	Nee	Noodverlichting gedurende 3 uur, Pro-uitvoering	398 lm	3 hr	
8718699983192	DN470B LED30S/830 DIA-VLC-E C WH P	Nee	-	-	-	
8718699983208	DN470B LED30S/840 DIA-VLC-E C	Nee	Noodverlichting gedurende 3 uur, Pro-uitvoering	398 lm	3 hr	

Order Code	Full Product Name	Centrale noodpost	Noodverlichting	Noodstroom	Gespecificeerde levensduur van de noodverlichting (indien volledig opgeladen)	
					398 lm	3 hr
	ELP3 WH P					
8718699983215	DN470B LED30S/840 DIA-VLC-E C WH P	Nee	-	-	-	
8718699983307	DN472B LED20S/830 DIA-VLC-E C WH PCC P	Nee	-	-	-	
8718699983321	DN472B LED20S/840 DIA-VLC-E C WH PCC P	Nee	-	-	-	
8718699983345	DN472B LED30S/830 DIA-VLC-E C WH PCC P	Nee	-	-	-	
8718699983352	DN472B LED30S/840 DIA-VLC-E C WH PCC P	Nee	-	-	-	
8718699983666	DN470B LED20S/830 WIA-E C WH P	Nee	-	-	-	
8720169012905	DN470B LED20S/830 PSD-E C WH P	Nee	-	-	-	
8720169012912	DN470B LED30S/830 PSD-E C WH P	Nee	-	-	-	



## GreenSpace 2 DN460B/DN461B/DN470B/DN471B

Order Code	Full Product Name	Centrale			Gespecificeerde levensduur van de noodverlichting (indien volledig opgeladen)
		noodpost	Noodverlichting	Noodstroom	
8718699982546	DN460B LED11S/8 40 DIA- VLC-E C WH P	Nee	-	-	-
8718699982553	DN460B LED20S/ 840 DIA- VLC-E C WH P	Nee	-	-	-
8718699982928	DN462B LED11S/8 30 DIA- VLC-E C WH PCC P	Nee	-	-	-
8718699982942	DN462B LED11S/8 40 DIA- VLC-E C WH PCC P	Nee	-	-	-
8720169013032	DN460B LED11S/8 30 PSD- E C WH P	Nee	-	-	-
8720169013049	DN460B LED11S/8 40 PSD- E C WH P	Nee	-	-	-
8718699384623	DN462B LED11S/8 30 PSU- E C WH PCC P	Nee	-	-	-
8718699793197	DN460B LED11S/8 30 PSU- E C WH P	Nee	-	-	-
8718699793203	DN460B LED11S/8 40 PSU- E C WH P	Nee	-	-	-

Order Code	Full Product Name	Centrale			Gespecificeerde levensduur van de noodverlichting (indien volledig opgeladen)
		noodpost	Noodverlichting	Noodstroom	
8718699793395	DN460B LED11S/8 30 PSU- E C ELP3 WH P	Nee	Noodverlichting gedurende 3 uur, Pro-uitvoering	-	3 hr
8718699793401	DN460B LED11S/8 40 PSU- E C ELP3 WH P	Nee	Noodverlichting gedurende 3 uur, Pro-uitvoering	-	3 hr
8718699982935	DN462B LED11S/8 30 DIA- VLC-E C WH PCO P	Nee	-	-	-
8718699982959	DN462B LED11S/8 40 DIA- VLC-E C WH PCO P	Nee	-	-	-
8718699793357	DN462B LED11S/8 30 PSU- E C WH PCO P	Nee	-	-	-
8718699793364	DN462B LED11S/8 40 PSU- E C WH PCO P	Nee	-	-	-
8718699983314	DN472B LED20S/ 830 DIA- VLC-E C WH PCO P	Nee	-	-	-
8718699983338	DN472B LED20S/ 840 DIA- VLC-E C WH PCO P	Nee	-	-	-
8720169013117	DN472B LED11S/8 30 PSD-	Nee	-	-	-

## GreenSpace 2 DN460B/DN461B/DN470B/DN471B

Order Code	Full Product Name	Centrale			Gespecificeerde levensduur van de noodverlichting (indien volledig opgeladen)
		noodpost	Noodverlichting	Noodstroom	
	E C WH PCO P				
8720169013124	DN472B LED11S/8 40 PSD- E C WH PCO P	Nee	-	-	-
8718699793470	DN472B LED20S/ 830 PSU-E C WH PCO P	Nee	-	-	-
8718699793487	DN472B LED20S/ 840 PSU-E C WH PCO P	Nee	-	-	-
8720169839045	DN510B 20S/840 PSU-E OC WH	-	-	-	-
8720169839090	DN510B 30S/840 PSU-E OC WH	-	-	-	-
8719514567955	TCTT180 20S/840 PSU-E WH281	Nee	-	-	-
8720169081567	TCTT180 20S/830 PSU-E WH	Nee	-	-	-
8720169838963	DN500B 20S/840 PSU-E C BK	-	-	-	-
8720169839076	DN510B 20S/840 PSU-E OC WH PCC	-	-	-	-
8720169839038	DN510B 20S/840	-	-	-	-

Order Code	Full Product Name	Centrale			Gespecificeerde levensduur van de noodverlichting (indien volledig opgeladen)
		noodpost	Noodverlichting	Noodstroom	
	PSU-E C BK				
8720169839052	DN510B 20S/840 PSU-E C WH PCC	-	-	-	-
8720169838642	DN510B 20S/830 PSU-E C WH	-	-	-	-
8720169839014	DN510B 20S/840 PSU-E C WH	-	-	-	-
8720169839083	DN510B 30S/840 PSU-E C WH	-	-	-	-
8719514564091	TCTT225 20S/840 PSU-E WH	Nee	-	-	-
8719514573925	TCTT225 20S/830 PSU-E WH	Nee	-	-	-
8719514563988	TCTT160 11S/840 PSU-E WH	Nee	-	-	-
8720169081888	TCTT160 11S/830 PSU-E WH	Nee	-	-	-
8720169838987	DN500B 20S/840 PSU-E C WH PCC	-	-	-	-
8720169838994	DN500B 20S/840 PSU-E WR WH PCO	-	-	-	-
8719514564107	TCTT230 20S/840 PSU-E WH	Nee	-	-	-

## GreenSpace 2 DN460B/DN461B/DN470B/DN471B

Order Code	Full Product Name	Centrale noodpost	Noodverlichting	Noodstroom	Gespecificeerde levensduur van de noodverlichting (indien volledig opgeladen)
8719514573963	TCTT230 20S/830 PSU-E WH	Nee	-	-	-
8720169839021	DN510B 20S/840	-	-	-	-

Order Code	Full Product Name	Centrale noodpost	Noodverlichting	Noodstroom	Gespecificeerde levensduur van de noodverlichting (indien volledig opgeladen)
	PSU-E C GR				

### Keurmerken en classificaties (1/2)

Order Code	Full Product Name	Bereik omgevingstemperatuur	ENEC-markering	Flikkerwaa (PstLM)	Gloeidraadtest	Order Code	Full Product Name	Bereik omgevingstemperatuur	ENEC-markering	Flikkerwaarde	Gloeidraadtest (PstLM)
8718699982560	DN461B LED11S/ 830 DIA- VLC-E C ELP3 WH P	+10 tot +40 °C	ENEC-markering	-	Temperatuur 750 °C, duur 30 s	8718699982980	DIA- VLC-E C WH PCC P	+10 tot +40 °C	ENEC-markering	-	Temperatuur 750 °C, duur 30 s
8718699982577	DN461B LED11S/ 830 DIA- VLC-E C WH P	+10 tot +40 °C	ENEC-markering	-	Temperatuur 750 °C, duur 30 s	8720169013056	DN461B LED11S/ 830 PSD-E C WH P	+10 tot +40 °C	ENEC-markering	-	Temperatuur 650 °C, duur 30 s
8718699982584	DN461B LED11S/ 840 DIA- VLC-E C ELP3 WH P	+10 tot +40 °C	ENEC-markering	-	Temperatuur 750 °C, duur 30 s	8720169013063	DN461B LED11S/ 840 PSD-E C WH P	+10 tot +40 °C	ENEC-markering	-	Temperatuur 650 °C, duur 30 s
8718699982591	DN461B LED11S/ 840 DIA- VLC-E C WH P	+10 tot +40 °C	ENEC-markering	-	Temperatuur 650 °C, duur 30 s	8718699384661	DN463B LED11S/ 830 PSU-E C WH PCC P	-15 tot +40 °C	ENEC-markering	-	Temperatuur 750 °C, duur 30 s
8718699982911	DN461B LED20S/ 840 DIA- VLC-E C WH P	+10 tot +40 °C	ENEC-markering	-	Temperatuur 750 °C, duur 30 s	8718699384678	DN463B LED11S/ 840 PSU-E C WH PCC P	-15 tot +40 °C	ENEC-markering	-	Temperatuur 750 °C, duur 30 s
8718699982973	DN463B LED11S/ 830	+10 tot +40 °C	ENEC-markering	-	Temperatuur 750 °C, duur 30 s						

## GreenSpace 2 DN460B/DN461B/DN470B/DN471B

Full						Full					
Order Code	Product Name	Bereik omgevingstemperatuur	ENEC-markering	Gloeidraadtest	Flikkerwaarde (PstLM)	Order Code	Product Name	Bereik omgevingstemperatuur	ENEC-markering	Gloeidraadtest	Flikkerwaarde (PstLM)
8718699793234	DN461B LED11S/830 PSU-E C WH P	+10 tot +40 °C	ENEC-markering	Temperatuur 750 °C, duur 30 s	-	8718699983222	DN471B LED20S/830 DIA-VLC-E C ELP3 WH P	+10 tot +40 °C	ENEC-markering	Temperatuur 750 °C, duur 30 s	-
8718699793241	DN461B LED11S/840 PSU-E C WH P	+10 tot +40 °C	ENEC-markering	Temperatuur 750 °C, duur 30 s	-	8718699983239	DN471B LED20S/830 DIA-VLC-E C WH P	+10 tot +40 °C	ENEC-markering	Temperatuur 750 °C, duur 30 s	-
8718699793432	DN461B LED11S/830 PSU-E C ELP3 WH P	+10 tot +40 °C	ENEC-markering	Temperatuur 750 °C, duur 30 s	-	8718699983246	DN471B LED20S/840 DIA-VLC-E C WH P	+10 tot +40 °C	ENEC-markering	Temperatuur 750 °C, duur 30 s	-
8718699793449	DN461B LED11S/840 PSU-E C ELP3 WH P	+10 tot +40 °C	ENEC-markering	Temperatuur 750 °C, duur 30 s	-	8718699983253	DN471B LED20S/840 DIA-VLC-E C WH P	+10 tot +40 °C	ENEC-markering	Temperatuur 750 °C, duur 30 s	-
8720169838970	DN500B 20S/840 PSU-E OC WH	+10 tot +40 °C	ENEC-markering	Temperatuur 750 °C, duur 30 s	-	8718699983260	DN471B LED30S/830 DIA-VLC-E C ELP3 WH P	+10 tot +40 °C	ENEC-markering	Temperatuur 750 °C, duur 30 s	-
8719514563995	TCTT165 11S/840 PSU-E WH	+10 tot +40 °C	ENEC-markering	Temperatuur 750 °C, duur 30 s	1	8718699983277	DN471B LED30S/830 DIA-VLC-E C WH P	+10 tot +40 °C	ENEC-markering	Temperatuur 750 °C, duur 30 s	-
8719514577046	TCTT165 11S/830 PSU-E WH	+10 tot +40 °C	ENEC-markering	Temperatuur 750 °C, duur 30 s	1	8718699983284	DN471B LED30S/840 DIA-VLC-E C WH P	+10 tot +40 °C	ENEC-markering	Temperatuur 750 °C, duur 30 s	-
8720169839007	DN500B 20S/840 PSU-E OC WH PCC	+10 tot +40 °C	ENEC-markering	Temperatuur 750 °C, duur 30 s	-	8718699983291	DN471B LED30S/840 DIA-	+10 tot +40 °C	ENEC-markering	Temperatuur 750 °C, duur 30 s	-
8718699983079	DN471B LED20S/830 WIA-E C WH P	+10 tot +40 °C	ENEC-markering	Temperatuur 750 °C, duur 30 s	-						
8718699983093	DN471B LED20S/840 WIA-E C WH P	+10 tot +40 °C	ENEC-markering	Temperatuur 750 °C, duur 30 s	-						

# GreenSpace 2 DN460B/DN461B/DN470B/DN471B

Order Code	Full Product Name	Bereik omgevingstemperatuur	ENEC-markering	Gloeidraadtest	Flikkerwaarde (PstLM)	Order Code	Full Product Name	Bereik omgevingstemperatuur	ENEC-markering	Gloeidraadtest	Flikkerwaarde (PstLM)
	VLC-E C WH P						WH PCC P				
8718699983376	DN473B LED20S/ 830 DIA- VLC-E C WH PCC P	-15 tot +40 °C	ENEC- markering	Temperatuur 750 °C, duur 30 s	-	8718699793319	DN471B LED20S/ 830 PSU-E C WH P	+10 tot +40 °C	ENEC- markering	Temperatuur 750 °C, duur 30 s	-
						8718699793326	DN471B LED20S/ 840 PSU-E C WH P	+10 tot +40 °C	ENEC- markering	Temperatuur 750 °C, duur 30 s	-
8718699983383	DN473B LED20S/ 840 DIA- VLC-E C WH PCC P	-15 tot +40 °C	ENEC- markering	Temperatuur 750 °C, duur 30 s	-	8718699793555	DN471B LED20S/ 830 PSU-E C ELP3 WH P	+10 tot +40 °C	ENEC- markering	Temperatuur 750 °C, duur 30 s	-
8718699983390	DN473B LED30S/ 830 DIA- VLC-E C WH PCC P	-15 tot +40 °C	ENEC- markering	Temperatuur 750 °C, duur 30 s	-	8718699793562	DN471B LED20S/ 840 PSU-E C ELP3 WH P	+10 tot +40 °C	ENEC- markering	Temperatuur 750 °C, duur 30 s	-
8718699983406	DN473B LED30S/ 840 DIA- VLC-E C WH PCC P	-15 tot +40 °C	ENEC- markering	Temperatuur 750 °C, duur 30 s	-	8718699945831	DN471B LED30S/ 830 PSU-E C WH P	+10 tot +40 °C	-	Temperatuur 750 °C, duur 30 s	-
8720169013094	DN471B LED20S/ 830 PSD-E C WH P	+10 tot +40 °C	ENEC- markering	Temperatuur 650 °C, duur 30 s	-	8718699945848	DN471B LED30S/ 840 PSU-E C WH P	+10 tot +40 °C	-	Temperatuur 750 °C, duur 30 s	-
8720169013100	DN471B LED20S/ 840 PSD-E C WH P	+10 tot +40 °C	ENEC- markering	Temperatuur 650 °C, duur 30 s	-	8718699945954	DN471B LED30S/ 830 PSU-E C ELP3 WH P	+10 tot +40 °C	-	Temperatuur 750 °C, duur 30 s	-
8718699384746	DN473B LED20S/ 830 PSU-E C WH PCC P	-15 tot +40 °C	ENEC- markering	Temperatuur 750 °C, duur 30 s	-	8718699945961	DN471B LED30S/ 840 PSU-E C ELP3 WH P	+10 tot +40 °C	-	Temperatuur 750 °C, duur 30 s	-
8718699384753	DN473B LED20S/ 840 PSU-E C	-15 tot +40 °C	ENEC- markering	Temperatuur 750 °C, duur 30 s	-	8719514574427	TCTT175 20S/830 PSU-E WH	+10 tot +40 °C	ENEC- markering	Temperatuur 750 °C, duur 30 s	1

## GreenSpace 2 DN460B/DN461B/DN470B/DN471B

Full						Full					
Order Code	Product Name	Bereik omgevingstemperatuur	ENEC-markering	Gloeidraadtest	Flikkerwaarde (PstLM)	Order Code	Product Name	Bereik omgevingstemperatuur	ENEC-markering	Gloeidraadtest	Flikkerwaarde (PstLM)
8719514581371	TCTT175 20S/840 PSU-E WH	+10 tot +40 °C	ENEC-markering	Temperatuur 750 °C, duur 30 s	1	8718699983185	WH PCC P DN470B LED30S/ 830 DIA- VLC-E C ELP3 WH P	+10 tot +40 °C	ENEC-markering	Temperatuur 750 °C, duur 30 s	-
8720169838956	DN500B 20S/840 PSU-E C GR	+10 tot +40 °C	ENEC-markering	Temperatuur 750 °C, duur 30 s	-	8718699983192	DN470B LED30S/ 830 DIA- VLC-E C WH P	+10 tot +40 °C	ENEC-markering	Temperatuur 750 °C, duur 30 s	-
8718699982997	DN470B LED11S/ 840 DIA- VLC-E C WH P	+10 tot +40 °C	ENEC-markering	Temperatuur 750 °C, duur 30 s	-	8718699983208	DN470B LED30S/ 840 DIA- VLC-E C ELP3 WH P	+10 tot +40 °C	ENEC-markering	Temperatuur 750 °C, duur 30 s	-
8718699983000	DN470B LED20S/ 830 DIA- VLC-E C ELP3 WH P	+10 tot +40 °C	ENEC-markering	Temperatuur 750 °C, duur 30 s	-	8718699983215	DN470B LED30S/ 840 DIA- VLC-E C WH P	+10 tot +40 °C	ENEC-markering	Temperatuur 750 °C, duur 30 s	-
8718699983017	DN470B LED20S/ 830 DIA- VLC-E C WH P	+10 tot +40 °C	ENEC-markering	Temperatuur 650 °C, duur 30 s	-	8718699983307	DN472B LED20S/ 830 DIA- VLC-E C WH PCC P	+10 tot +40 °C	ENEC-markering	Temperatuur 750 °C, duur 30 s	-
8718699983024	DN470B LED20S/ 840 DIA- VLC-E C ELP3 WH P	+10 tot +40 °C	ENEC-markering	Temperatuur 750 °C, duur 30 s	-	8718699983321	DN472B LED20S/ 840 DIA- VLC-E C WH PCC P	+10 tot +40 °C	ENEC-markering	Temperatuur 750 °C, duur 30 s	-
8718699983055	DN470B LED20S/ 840 WIA-E C WH P	+10 tot +40 °C	ENEC-markering	Temperatuur 750 °C, duur 30 s	-	8718699983345	DN472B LED30S/ 830 DIA- VLC-E C WH PCC P	-15 tot +40 °C	ENEC-markering	Temperatuur 750 °C, duur 30 s	-
8718699983116	DN472B LED20S/ 830 WIA-E C WH PCC P	-15 tot +40 °C	ENEC-markering	Temperatuur 750 °C, duur 30 s	-	8718699983130	DN472B LED20S/ 840 WIA-E C	-15 tot +40 °C	ENEC-markering	Temperatuur 750 °C, duur 30 s	-

## GreenSpace 2 DN460B/DN461B/DN470B/DN471B

Order Code	Full					Order Code	Full				
	Product Name	Bereik omgevingstemperatuur	ENEC-markering	Gloeidraadtest	Flikkerwaarde (PstLM)		Product Name	Bereik omgevingstemperatuur	ENEC-markering	Gloeidraadtest	Flikkerwaarde (PstLM)
8718699983352	DN472B	-15 tot +40 °C	ENEC-	Temperatuur	-	8718699793289	DN470B	+10 tot +40 °C	ENEC-	Temperatuur	-
	LED30S/		markering	750 °C, duur			LED20S/		markering	750 °C, duur	
	840			30 s			840			30 s	
	DIA-						PSU-E C				
	VLC-E C						WH P				
8718699983666	DN470B	+10 tot +40 °C	ENEC-	Temperatuur	-	8718699793517	DN470B	+10 tot +40 °C	ENEC-	Temperatuur	-
	LED20S/		markering	750 °C, duur			LED20S/		markering	750 °C, duur	
	830			30 s			830			30 s	
	WIA-E C						PSU-E C				
	WH P						ELP3				
8720169012905	DN470B	+10 tot +40 °C	ENEC-	Temperatuur	-	8718699793524	DN470B	+10 tot +40 °C	ENEC-	Temperatuur	-
	LED20S/		markering	650 °C, duur			LED20S/		markering	750 °C, duur	
	830			30 s			840			30 s	
	PSD-E C						PSU-E C				
	WH P						ELP3				
8720169012912	DN470B	+10 tot +40 °C	ENEC-	Temperatuur	-	8718699945756	DN470B	+10 tot +40 °C	-	Temperatuur	-
	LED30S/		markering	650 °C, duur			LED30S/			750 °C, duur	
	830			30 s			830			30 s	
	PSD-E C						PSU-E C				
	WH P						WH P				
8720169013070	DN470B	+10 tot +40 °C	ENEC-	Temperatuur	-	8718699945763	DN470B	+10 tot +40 °C	-	Temperatuur	-
	LED20S/		markering	650 °C, duur			LED30S/			750 °C, duur	
	840			30 s			840			30 s	
	PSD-E C						PSU-E C				
	WH P						WH P				
8720169013087	DN470B	+10 tot +40 °C	ENEC-	Temperatuur	-	8718699945916	DN470B	+10 tot +40 °C	-	Temperatuur	-
	LED30S/		markering	650 °C, duur			LED30S/			750 °C, duur	
	840			30 s			830			30 s	
	PSD-E C						PSU-E C				
	WH P						ELP3				
8718699384708	DN472B	-15 tot +40 °C	ENEC-	Temperatuur	-	8718699945923	DN470B	+10 tot +40 °C	-	Temperatuur	-
	LED20S/		markering	750 °C, duur			LED30S/			750 °C, duur	
	830			30 s			840			30 s	
	PSU-E C						PSU-E C				
	WH PCC						ELP3				
8718699384715	DN472B	-15 tot +40 °C	ENEC-	Temperatuur	-	8720169839069	DN510B	+10 tot +40 °C	ENEC-	Temperatuur	-
	LED20S/		markering	750 °C, duur			20S/840		markering	750 °C, duur	
	840			30 s			PSU-E			30 s	
	PSU-E C						WR WH				
	WH PCC						PCO				
8718699793272	DN470B	+10 tot +40 °C	ENEC-	Temperatuur	-	8720169838635	DN500B	+10 tot +40 °C	ENEC-	Temperatuur	-
	LED20S/		markering	750 °C, duur			11S/830		markering	750 °C, duur	
	830			30 s			PSU-E C			30 s	
	PSU-E C						WH				
	WH P										

## GreenSpace 2 DN460B/DN461B/DN470B/DN471B

Full						Full					
Order Code	Product Name	Bereik omgevingstemperatuur	ENEC-markering	Gloeidraadtest	Flikkerwaarde (PstLM)	Order Code	Product Name	Bereik omgevingstemperatuur	ENEC-markering	Gloeidraadtest	Flikkerwaarde (PstLM)
8720169838932	DN500B 20S/830 PSU-E C WH	+10 tot +40 °C	ENEC-markering	Temperatuur 750 °C, duur 30 s	-	8720169013049	PSD-E C WH P DN460B LED11S/ 840 PSD-E C WH P	+10 tot +40 °C	ENEC-markering	Temperatuur 650 °C, duur 30 s	-
8720169838949	DN500B 20S/840 PSU-E C WH	+10 tot +40 °C	ENEC-markering	Temperatuur 750 °C, duur 30 s	-	8718699384623	DN462B LED11S/ 830 PSU-E C WH PCC P	-15 tot +40 °C	ENEC-markering	Temperatuur 750 °C, duur 30 s	-
8718699982522	DN460B LED11S/ 830 DIA- VLC-E C ELP3 WH P	+10 tot +40 °C	ENEC-markering	Temperatuur 750 °C, duur 30 s	-	8718699793197	DN460B LED11S/ 830 PSU-E C WH P	+10 tot +40 °C	ENEC-markering	Temperatuur 650 °C, duur 30 s	-
8718699982539	DN460B LED11S/ 830 DIA- VLC-E C WH P	+10 tot +40 °C	ENEC-markering	Temperatuur 650 °C, duur 30 s	-	8718699793203	DN460B LED11S/ 840 PSU-E C WH P	+10 tot +40 °C	ENEC-markering	Temperatuur 750 °C, duur 30 s	-
8718699982546	DN460B LED11S/ 840 DIA- VLC-E C WH P	+10 tot +40 °C	ENEC-markering	Temperatuur 750 °C, duur 30 s	-	8718699793395	DN460B LED11S/ 830 PSU-E C ELP3 WH P	+10 tot +40 °C	ENEC-markering	Temperatuur 750 °C, duur 30 s	-
8718699982553	DN460B LED20S/ 840 DIA- VLC-E C WH P	+10 tot +40 °C	ENEC-markering	Temperatuur 750 °C, duur 30 s	-	8718699793401	DN460B LED11S/ 840 PSU-E C ELP3 WH P	+10 tot +40 °C	ENEC-markering	Temperatuur 750 °C, duur 30 s	-
8718699982928	DN462B LED11S/ 830 DIA- VLC-E C WH PCC P	+10 tot +40 °C	ENEC-markering	Temperatuur 750 °C, duur 30 s	-	8718699982935	DN462B LED11S/ 830 DIA- VLC-E C WH PCO P	+10 tot +40 °C	ENEC-markering	Temperatuur 750 °C, duur 30 s	-
8718699982942	DN462B LED11S/ 840 DIA- VLC-E C WH PCC P	+10 tot +40 °C	ENEC-markering	Temperatuur 750 °C, duur 30 s	-	8718699982959	DN462B LED11S/ 840 DIA- VLC-E C WH PCO P	+10 tot +40 °C	ENEC-markering	Temperatuur 750 °C, duur 30 s	-
8720169013032	DN460B LED11S/ 830	+10 tot +40 °C	ENEC-markering	Temperatuur 650 °C, duur 30 s	-						

## GreenSpace 2 DN460B/DN461B/DN470B/DN471B

Full						Full					
Order Code	Product Name	Bereik omgevingstemperatuur	ENEC-markering	Gloeidraadtest	Flikkerwaarde (PstLM)	Order Code	Product Name	Bereik omgevingstemperatuur	ENEC-markering	Gloeidraadtest	Flikkerwaarde (PstLM)
8718699793357	DN462B	-15 tot +40 °C	ENEC-	Temperatuur	-	8720169839045	DN510B	+10 tot +40 °C	ENEC-	Temperatuur	-
	LED11S/830		markering	750 °C, duur			20S/840		markering	750 °C, duur	
	PSU-E C			30 s			PSU-E			30 s	
	WH PCO						OC WH				
	P					8720169839090	DN510B	+10 tot +40 °C	ENEC-	Temperatuur	-
							30S/840		markering	750 °C, duur	
							PSU-E			30 s	
							OC WH				
8718699793364	DN462B	-15 tot +40 °C	ENEC-	Temperatuur	-	8719514567955	TCTT180	+10 tot +40 °C	ENEC-	Temperatuur	1
	LED11S/840		markering	750 °C, duur			20S/840		markering	750 °C, duur	
	PSU-E C			30 s			PSU-E			30 s	
	WH PCO						WH281				
	P										
871869983314	DN472B	-15 tot +40 °C	ENEC-	Temperatuur	-	8720169081567	TCTT180	+10 tot +40 °C	ENEC-	Temperatuur	1
	LED20S/830		markering	750 °C, duur			20S/830		markering	750 °C, duur	
	DIA-			30 s			PSU-E			30 s	
	VLC-E C						WH				
	WH PCO					8720169838963	DN500B	+10 tot +40 °C	ENEC-	Temperatuur	-
	P						20S/840		markering	750 °C, duur	
							PSU-E C			30 s	
							BK				
871869983338	DN472B	-15 tot +40 °C	ENEC-	Temperatuur	-	8720169839076	DN510B	+10 tot +40 °C	ENEC-	Temperatuur	-
	LED20S/840		markering	750 °C, duur			20S/840		markering	750 °C, duur	
	DIA-			30 s			PSU-E			30 s	
	VLC-E C						OC WH				
	WH PCO						PCC				
	P					8720169839038	DN510B	+10 tot +40 °C	ENEC-	Temperatuur	-
							20S/840		markering	750 °C, duur	
							PSU-E C			30 s	
							BK				
8720169013117	DN472B	-15 tot +40 °C	ENEC-	Temperatuur	-	8720169839052	DN510B	+10 tot +40 °C	ENEC-	Temperatuur	-
	LED11S/830		markering	650 °C, duur			20S/840		markering	750 °C, duur	
	PSD-E C			30 s			PSU-E C			30 s	
	WH PCO						WH PCC				
	P										
8720169013124	DN472B	-15 tot +40 °C	ENEC-	Temperatuur	-	8720169838642	DN510B	+10 tot +40 °C	ENEC-	Temperatuur	-
	LED11S/840		markering	650 °C, duur			20S/830		markering	750 °C, duur	
	PSD-E C			30 s			PSU-E C			30 s	
	WH PCO						WH				
	P					8720169839014	DN510B	+10 tot +40 °C	ENEC-	Temperatuur	-
							20S/840		markering	750 °C, duur	
							PSU-E C			30 s	
							WH				
8718699793470	DN472B	-15 tot +40 °C	ENEC-	Temperatuur	-	8720169839083	DN510B	+10 tot +40 °C	ENEC-	Temperatuur	-
	LED20S/830		markering	750 °C, duur			30S/840		markering	750 °C, duur	
	PSU-E C			30 s			PSU-E C			30 s	
	WH PCO						WH				
	P										
8718699793487	DN472B	-15 tot +40 °C	ENEC-	Temperatuur	-	8719514564091	TCTT225	+10 tot +40 °C	ENEC-	Temperatuur	1
	LED20S/840		markering	750 °C, duur			20S/840		markering	750 °C, duur	
	PSU-E C			30 s			PSU-E			30 s	
	WH PCO						WH				
	P										

## GreenSpace 2 DN460B/DN461B/DN470B/DN471B

Order Code	Full			Flikkerwaarde			Order Code	Full			Flikkerwaarde		
	Product Name	Bereik omgevingstemperatuur	ENEC-markering	Gloeidraadtest	(PstLM)	Product Name		Bereik omgevingstemperatuur	ENEC-markering	Gloeidraadtest	(PstLM)		
8719514573925	TCTT225 20S/830 PSU-E WH	+10 tot +40 °C	ENEC- markering	Temperatuur 750 °C, duur 30 s	1	8719514564107	TCTT230 20S/840 PSU-E WH	+10 tot +40 °C	ENEC- markering	Temperatuur 750 °C, duur 30 s	1		
8719514563988	TCTT160 11S/840 PSU-E WH	+10 tot +40 °C	ENEC- markering	Temperatuur 750 °C, duur 30 s	1	8719514573963	TCTT230 20S/830 PSU-E WH	+10 tot +40 °C	ENEC- markering	Temperatuur 750 °C, duur 30 s	1		
8720169081888	TCTT160 11S/830 PSU-E WH	+10 tot +40 °C	ENEC- markering	Temperatuur 750 °C, duur 30 s	1	8720169839021	DN510B 20S/840 PSU-E C GR	+10 tot +40 °C	ENEC- markering	Temperatuur 750 °C, duur 30 s	-		
8720169838987	DN500B 20S/840 PSU-E C WH PCC	+10 tot +40 °C	ENEC- markering	Temperatuur 750 °C, duur 30 s	-								
8720169838994	DN500B 20S/840 PSU-E WR WH PCO	+10 tot +40 °C	ENEC- markering	Temperatuur 750 °C, duur 30 s	-								

### Keurmerken en classificaties (2/2)

Order Code	Full Product Name	Stroboscoopeffectwaarde (SVM)
8718699982560	DN461B LED11S/830 DIA-VLC-E C ELP3 WH P	-
8718699982577	DN461B LED11S/830 DIA-VLC-E C WH P	-
8718699982584	DN461B LED11S/840 DIA-VLC-E C ELP3 WH P	-
8718699982591	DN461B LED11S/840 DIA-VLC-E C WH P	0,4
8718699982911	DN461B LED20S/840 DIA-VLC-E C WH P	-
8718699982973	DN463B LED11S/830 DIA-VLC-E C WH PCC P	-
8718699982980	DN463B LED11S/840 DIA-VLC-E C WH PCC P	-
8720169013056	DN461B LED11S/830 PSD-E C WH P	0,4
8720169013063	DN461B LED11S/840 PSD-E C WH P	0,4
8718699384661	DN463B LED11S/830 PSU-E C WH PCC P	-
8718699384678	DN463B LED11S/840 PSU-E C WH PCC P	-
8718699793234	DN461B LED11S/830 PSU-E C WH P	-
8718699793241	DN461B LED11S/840 PSU-E C WH P	-
8718699793432	DN461B LED11S/830 PSU-E C ELP3 WH P	-

Order Code	Full Product Name	Stroboscoopeffectwaarde (SVM)
8718699793449	DN461B LED11S/840 PSU-E C ELP3 WH P	-
8720169838970	DN500B 20S/840 PSU-E OC WH	-
8719514563995	TCTT165 11S/840 PSU-E WH	0,4
8719514577046	TCTT165 11S/830 PSU-E WH	0,4
8720169839007	DN500B 20S/840 PSU-E OC WH PCC	-
8718699983079	DN471B LED20S/830 WIA-E C WH P	-
8718699983093	DN471B LED20S/840 WIA-E C WH P	-
8718699983222	DN471B LED20S/830 DIA-VLC-E C ELP3 WH P	-
8718699983239	DN471B LED20S/830 DIA-VLC-E C WH P	-
8718699983246	DN471B LED20S/840 DIA-VLC-E C ELP3 WH P	-
8718699983253	DN471B LED20S/840 DIA-VLC-E C WH P	-
8718699983260	DN471B LED30S/830 DIA-VLC-E C ELP3 WH P	-
8718699983277	DN471B LED30S/830 DIA-VLC-E C WH P	-
8718699983284	DN471B LED30S/840 DIA-VLC-E C ELP3 WH P	-
8718699983291	DN471B LED30S/840 DIA-VLC-E C WH P	-

## GreenSpace 2 DN460B/DN461B/DN470B/DN471B

Order Code	Full Product Name	Stroboscoopeffectwaarde (SVM)
8718699983376	DN473B LED20S/830 DIA-VLC-E C WH PCC P	-
8718699983383	DN473B LED20S/840 DIA-VLC-E C WH PCC P	-
8718699983390	DN473B LED30S/830 DIA-VLC-E C WH PCC P	-
8718699983406	DN473B LED30S/840 DIA-VLC-E C WH PCC P	-
8720169013094	DN471B LED20S/830 PSD-E C WH P	0,4
8720169013100	DN471B LED20S/840 PSD-E C WH P	0,4
8718699384746	DN473B LED20S/830 PSU-E C WH PCC P	-
8718699384753	DN473B LED20S/840 PSU-E C WH PCC P	-
8718699793319	DN471B LED20S/830 PSU-E C WH P	-
8718699793326	DN471B LED20S/840 PSU-E C WH P	-
8718699793555	DN471B LED20S/830 PSU-E C ELP3 WH P	-
8718699793562	DN471B LED20S/840 PSU-E C ELP3 WH P	-
8718699945831	DN471B LED30S/830 PSU-E C WH P	-
8718699945848	DN471B LED30S/840 PSU-E C WH P	-
8718699945954	DN471B LED30S/830 PSU-E C ELP3 WH P	-
8718699945961	DN471B LED30S/840 PSU-E C ELP3 WH P	-
8719514574427	TCTT175 20S/830 PSU-E WH	0,4
8719514581371	TCTT175 20S/840 PSU-E WH	0,4
8720169838956	DN500B 20S/840 PSU-E C GR	-
8718699982997	DN470B LED11S/840 DIA-VLC-E C WH P	-
8718699983000	DN470B LED20S/830 DIA-VLC-E C ELP3 WH P	-
8718699983017	DN470B LED20S/830 DIA-VLC-E C WH P	0,4
8718699983024	DN470B LED20S/840 DIA-VLC-E C ELP3 WH P	-
8718699983055	DN470B LED20S/840 WIA-E C WH P	-
8718699983116	DN472B LED20S/830 WIA-E C WH PCC P	-
8718699983130	DN472B LED20S/840 WIA-E C WH PCC P	-
8718699983185	DN470B LED30S/830 DIA-VLC-E C ELP3 WH P	-
8718699983192	DN470B LED30S/830 DIA-VLC-E C WH P	-
8718699983208	DN470B LED30S/840 DIA-VLC-E C ELP3 WH P	-
8718699983215	DN470B LED30S/840 DIA-VLC-E C WH P	-

Order Code	Full Product Name	Stroboscoopeffectwaarde (SVM)
8718699983307	DN472B LED20S/830 DIA-VLC-E C WH PCC P	-
8718699983321	DN472B LED20S/840 DIA-VLC-E C WH PCC P	-
8718699983345	DN472B LED30S/830 DIA-VLC-E C WH PCC P	-
8718699983352	DN472B LED30S/840 DIA-VLC-E C WH PCC P	-
8718699983666	DN470B LED20S/830 WIA-E C WH P	-
8720169012905	DN470B LED20S/830 PSD-E C WH P	0,4
8720169012912	DN470B LED30S/830 PSD-E C WH P	0,4
8720169013070	DN470B LED20S/840 PSD-E C WH P	0,4
8720169013087	DN470B LED30S/840 PSD-E C WH P	0,4
8718699384708	DN472B LED20S/830 PSU-E C WH PCC P	-
8718699384715	DN472B LED20S/840 PSU-E C WH PCC P	-
8718699793272	DN470B LED20S/830 PSU-E C WH P	-
8718699793289	DN470B LED20S/840 PSU-E C WH P	-
8718699793517	DN470B LED20S/830 PSU-E C ELP3 WH P	-
8718699793524	DN470B LED20S/840 PSU-E C ELP3 WH P	-
8718699945756	DN470B LED30S/830 PSU-E C WH P	-
8718699945763	DN470B LED30S/840 PSU-E C WH P	-
8718699945916	DN470B LED30S/830 PSU-E C ELP3 WH P	-
8718699945923	DN470B LED30S/840 PSU-E C ELP3 WH P	-
8720169839069	DN510B 20S/840 PSU-E WR WH PCO	-
8720169838635	DN500B 11S/830 PSU-E C WH	-
8720169838932	DN500B 20S/830 PSU-E C WH	-
8720169838949	DN500B 20S/840 PSU-E C WH	-
8718699982522	DN460B LED11S/830 DIA-VLC-E C ELP3 WH P	-
8718699982539	DN460B LED11S/830 DIA-VLC-E C WH P	0,4
8718699982546	DN460B LED11S/840 DIA-VLC-E C WH P	-
8718699982553	DN460B LED20S/840 DIA-VLC-E C WH P	-
8718699982928	DN462B LED11S/830 DIA-VLC-E C WH PCC P	-
8718699982942	DN462B LED11S/840 DIA-VLC-E C WH PCC P	-
8720169013032	DN460B LED11S/830 PSD-E C WH P	0,4
8720169013049	DN460B LED11S/840 PSD-E C WH P	0,4
8718699384623	DN462B LED11S/830 PSU-E C WH P	-
8718699793197	DN460B LED11S/830 PSU-E C WH P	0,4
8718699793203	DN460B LED11S/840 PSU-E C WH P	-

## GreenSpace 2 DN460B/DN461B/DN470B/DN471B

Order Code	Full Product Name	Stroboscoopeffectwaarde (SVM)
8718699793395	DN460B LED11S/830 PSU-E C ELP3 WH P	-
8718699793401	DN460B LED11S/840 PSU-E C ELP3 WH P	-
8718699982935	DN462B LED11S/830 DIA-VLC-E C WH PCO P	-
8718699982959	DN462B LED11S/840 DIA-VLC-E C WH PCO P	-
8718699793357	DN462B LED11S/830 PSU-E C WH PCO P	-
8718699793364	DN462B LED11S/840 PSU-E C WH PCO P	-
8718699983314	DN472B LED20S/830 DIA-VLC-E C WH PCO P	-
8718699983338	DN472B LED20S/840 DIA-VLC-E C WH PCO P	-
8720169013117	DN472B LED11S/830 PSD-E C WH PCO P	0,4
8720169013124	DN472B LED11S/840 PSD-E C WH PCO P	0,4
8718699793470	DN472B LED20S/830 PSU-E C WH PCO P	-

Order Code	Full Product Name	Stroboscoopeffectwaarde (SVM)
8718699793487	DN472B LED20S/840 PSU-E C WH PCO P	-
8720169839045	DN510B 20S/840 PSU-E OC WH	-
8720169839090	DN510B 30S/840 PSU-E OC WH	-
8719514567955	TCTT180 20S/840 PSU-E WH281	0,4
8720169081567	TCTT180 20S/830 PSU-E WH	0,4
8720169838963	DN500B 20S/840 PSU-E C BK	-
8720169839076	DN510B 20S/840 PSU-E OC WH PCC	-
8720169839038	DN510B 20S/840 PSU-E C BK	-
8720169839052	DN510B 20S/840 PSU-E C WH PCC	-
8720169838642	DN510B 20S/830 PSU-E C WH	-
8720169839014	DN510B 20S/840 PSU-E C WH	-
8720169839083	DN510B 30S/840 PSU-E C WH	-
8719514564091	TCTT225 20S/840 PSU-E WH	0,4
8719514573925	TCTT225 20S/830 PSU-E WH	0,4
8719514563988	TCTT160 11S/840 PSU-E WH	0,4
8720169081888	TCTT160 11S/830 PSU-E WH	0,4
8720169838987	DN500B 20S/840 PSU-E C WH PCC	-
8720169838994	DN500B 20S/840 PSU-E WR WH PCO	-
8719514564107	TCTT230 20S/840 PSU-E WH	0,4
8719514573963	TCTT230 20S/830 PSU-E WH	0,4
8720169839021	DN510B 20S/840 PSU-E C GR	-

### Initiële prestaties (conform IEC)

Order Code	Full Product Name	Aanvankelijke kleurkwaliteit	Tolerantie lichtstroom
8718699982560	DN461B LED11S/830 DIA-VLC-E C ELP3 WH P	(0.43, 0.40) SDCM<3	+/-10%
8718699982577	DN461B LED11S/830 DIA-VLC-E C WH P	(0.43, 0.40) SDCM<3	+/-10%
8718699982584	DN461B LED11S/840 DIA-VLC-E C ELP3 WH P	(0.38, 0.38) SDCM<3	+/-10%
8718699982591	DN461B LED11S/840 DIA-VLC-E C WH P	(0.38, 0.38) SDCM<3	+/-10%
8718699982911	DN461B LED20S/840 DIA-VLC-E C WH P	(0.38, 0.38) SDCM<3	+/-10%
8718699982973	DN463B LED11S/830 DIA-VLC-E C WH PCC P	(0.43, 0.40) SDCM<3	+/-10%
8718699982980	DN463B LED11S/840 DIA-VLC-E C WH PCC P	(0.38, 0.38) SDCM<3	+/-10%
8720169013056	DN461B LED11S/830 PSD-E C WH P	(0.43, 0.40) SDCM<3	+/-10%
8720169013063	DN461B LED11S/840 PSD-E C WH P	(0.38, 0.38) SDCM<3	+/-10%
8718699384661	DN463B LED11S/830 PSU-E C WH PCC P	(0.44, 0.40) SDCM<3	+/-10%
8718699384678	DN463B LED11S/840 PSU-E C WH PCC P	(0.38, 0.38) SDCM<3	+/-10%
8718699793234	DN461B LED11S/830 PSU-E C WH P	(0.43, 0.40) SDCM<3	+/-10%

Order Code	Full Product Name	Aanvankelijke kleurkwaliteit	Tolerantie lichtstroom
8718699793241	DN461B LED11S/840 PSU-E C WH P	(0.38, 0.38) SDCM<3	+/-10%
8718699793432	DN461B LED11S/830 PSU-E C ELP3 WH P	(0.43, 0.40) SDCM<3	+/-10%
8718699793449	DN461B LED11S/840 PSU-E C ELP3 WH P	(0.38, 0.38) SDCM<3	+/-10%
8720169838970	DN500B 20S/840 PSU-E OC WH	(0.38, 0.38) SDCM <3	+/-10%
8719514563995	TCTT165 11S/840 PSU-E WH	(0.38, 0.38) SDCM < 3	-10% / +10%
8719514577046	TCTT165 11S/830 PSU-E WH	(0.43, 0.40) SDCM < 3	-10% / +10%
8720169839007	DN500B 20S/840 PSU-E OC WH PCC	(0.38, 0.38) SDCM <3	+/-10%
8718699983079	DN471B LED20S/830 WIA-E C WH P	(0.43, 0.40) SDCM<3	+/-10%
8718699983093	DN471B LED20S/840 WIA-E C WH P	(0.38, 0.38) SDCM<3	+/-10%
8718699983222	DN471B LED20S/830 DIA-VLC-E C ELP3 WH P	(0.43, 0.40) SDCM<3	+/-10%
8718699983239	DN471B LED20S/830 DIA-VLC-E C WH P	(0.43, 0.40) SDCM<3	+/-10%
8718699983246	DN471B LED20S/840 DIA-VLC-E C ELP3 WH P	(0.38, 0.38) SDCM<3	+/-10%
8718699983253	DN471B LED20S/840 DIA-VLC-E C WH P	(0.38, 0.38) SDCM<3	+/-10%

## GreenSpace 2 DN460B/DN461B/DN470B/DN471B

Order Code	Full Product Name	Aanvankelijke kleurkwaliteit	Tolerantie lichtstroom
8718699983260	DN471B LED30S/830 DIA- VLC-E C ELP3 WH P	(0.43, 0.40) SDCM<3	+/-10%
8718699983277	DN471B LED30S/830 DIA- VLC-E C WH P	(0.43, 0.40) SDCM<3	+/-10%
8718699983284	DN471B LED30S/840 DIA- VLC-E C ELP3 WH P	(0.38, 0.38) SDCM<3	+/-10%
8718699983291	DN471B LED30S/840 DIA- VLC-E C WH P	(0.38, 0.38) SDCM<3	+/-10%
8718699983376	DN473B LED20S/830 DIA- VLC-E C WH PCC P	(0.43, 0.40) SDCM<3	+/-10%
8718699983383	DN473B LED20S/840 DIA- VLC-E C WH PCC P	(0.38, 0.38) SDCM<3	+/-10%
8718699983390	DN473B LED30S/830 DIA- VLC-E C WH PCC P	(0.43, 0.40) SDCM<3	+/-10%
8718699983406	DN473B LED30S/840 DIA- VLC-E C WH PCC P	(0.38, 0.38) SDCM<3	+/-10%
8720169013094	DN471B LED20S/830 PSD-E C WH P	(0.43, 0.40) SDCM<3	+/-10%
8720169013100	DN471B LED20S/840 PSD-E C WH P	(0.38, 0.38) SDCM<3	+/-10%
8718699384746	DN473B LED20S/830 PSU-E C WH PCC P	(0.44, 0.40) SDCM<3	+/-10%
8718699384753	DN473B LED20S/840 PSU-E C WH PCC P	(0.38, 0.38) SDCM<3	+/-10%
8718699793319	DN471B LED20S/830 PSU-E C WH P	(0.43, 0.40) SDCM<3	+/-10%
8718699793326	DN471B LED20S/840 PSU-E C WH P	(0.38, 0.38) SDCM<3	+/-10%
8718699793555	DN471B LED20S/830 PSU-E C ELP3 WH P	(0.43, 0.40) SDCM<3	+/-10%
8718699793562	DN471B LED20S/840 PSU-E C ELP3 WH P	(0.38, 0.38) SDCM<3	+/-10%
8718699945831	DN471B LED30S/830 PSU-E C WH P	(0.43, 0.40) SDCM<3	+/-10%
8718699945848	DN471B LED30S/840 PSU-E C WH P	(0.38, 0.38) SDCM<3	+/-10%
8718699945954	DN471B LED30S/830 PSU-E C ELP3 WH P	(0.43, 0.40) SDCM<3	+/-10%
8718699945961	DN471B LED30S/840 PSU-E C ELP3 WH P	(0.38, 0.38) SDCM<3	+/-10%
8719514574427	TCTT175 20S/830 PSU-E WH	(0.43, 0.40) SDCM < 3	-10% / +10%
8719514581371	TCTT175 20S/840 PSU-E WH	(0.38, 0.38) SDCM < 3	-10% / +10%
8720169838956	DN500B 20S/840 PSU-E C GR	(0.38, 0.38) SDCM < 3	+/-10%
8718699982997	DN470B LED11S/840 DIA- VLC-E C WH P	(0.38, 0.38) SDCM<3	+/-10%
8718699983000	DN470B LED20S/830 DIA- VLC-E C ELP3 WH P	(0.43, 0.40) SDCM<3	+/-10%
8718699983017	DN470B LED20S/830 DIA- VLC-E C WH P	(0.43, 0.40) SDCM<3	+/-10%
8718699983024	DN470B LED20S/840 DIA- VLC-E C ELP3 WH P	(0.38, 0.38) SDCM<3	+/-10%

Order Code	Full Product Name	Aanvankelijke kleurkwaliteit	Tolerantie lichtstroom
8718699983055	DN470B LED20S/840 WIA-E C WH P	(0.38, 0.38) SDCM<3	+/-10%
8718699983116	DN472B LED20S/830 WIA-E C WH PCC P	(0.43, 0.40) SDCM<3	+/-10%
8718699983130	DN472B LED20S/840 WIA-E C WH PCC P	(0.38, 0.38) SDCM<3	+/-10%
8718699983185	DN470B LED30S/830 DIA- VLC-E C ELP3 WH P	(0.43, 0.40) SDCM<3	+/-10%
8718699983192	DN470B LED30S/830 DIA- VLC-E C WH P	(0.43, 0.40) SDCM<3	+/-10%
8718699983208	DN470B LED30S/840 DIA- VLC-E C ELP3 WH P	(0.38, 0.38) SDCM<3	+/-10%
8718699983215	DN470B LED30S/840 DIA- VLC-E C WH P	(0.38, 0.38) SDCM<3	+/-10%
8718699983307	DN472B LED20S/830 DIA- VLC-E C WH PCC P	(0.43, 0.40) SDCM<3	+/-10%
8718699983321	DN472B LED20S/840 DIA- VLC-E C WH PCC P	(0.38, 0.38) SDCM<3	+/-10%
8718699983345	DN472B LED30S/830 DIA- VLC-E C WH PCC P	(0.43, 0.40) SDCM<3	+/-10%
8718699983352	DN472B LED30S/840 DIA- VLC-E C WH PCC P	(0.38, 0.38) SDCM<3	+/-10%
8718699983666	DN470B LED20S/830 WIA-E C WH P	(0.43, 0.40) SDCM<3	+/-10%
8720169012905	DN470B LED20S/830 PSD-E C WH P	(0.43, 0.40) SDCM<3	+/-10%
8720169012912	DN470B LED30S/830 PSD-E C WH P	(0.43, 0.40) SDCM<3	+/-10%
8720169013070	DN470B LED20S/840 PSD-E C WH P	(0.38, 0.38) SDCM<3	+/-10%
8720169013087	DN470B LED30S/840 PSD-E C WH P	(0.38, 0.38) SDCM<3	+/-10%
8718699384708	DN472B LED20S/830 PSU-E C WH PCC P	(0.44, 0.40) SDCM<3	+/-10%
8718699384715	DN472B LED20S/840 PSU-E C WH PCC P	(0.38, 0.38) SDCM<3	+/-10%
8718699793272	DN470B LED20S/830 PSU-E C WH P	(0.43, 0.40) SDCM<3	+/-10%
8718699793289	DN470B LED20S/840 PSU-E C WH P	(0.38, 0.38) SDCM<3	+/-10%
8718699793517	DN470B LED20S/830 PSU-E C ELP3 WH P	(0.43, 0.40) SDCM<3	+/-10%
8718699793524	DN470B LED20S/840 PSU-E C ELP3 WH P	(0.38, 0.38) SDCM<3	+/-10%
8718699945756	DN470B LED30S/830 PSU-E C WH P	(0.43, 0.40) SDCM<3	+/-10%
8718699945763	DN470B LED30S/840 PSU-E C WH P	(0.38, 0.38) SDCM<3	+/-10%
8718699945916	DN470B LED30S/830 PSU-E C ELP3 WH P	(0.43, 0.40) SDCM<3	+/-10%

## GreenSpace 2 DN460B/DN461B/DN470B/DN471B

Order Code	Full Product Name	Aanvankelijke kleurkwaliteit	Tolerantie lichtstroom
8718699945923	DN470B LED30S/840 PSU-E C ELP3 WH P	(0.38, 0.38) SDCM<3	+/-10%
8720169839069	DN510B 20S/840 PSU-E WR WH PCO	(0.38, 0.38) SDCM <3	+/-10%
8720169838635	DN500B 11S/830 PSU-E C WH	(0.38, 0.38) SDCM <3	+/-10%
8720169838932	DN500B 20S/830 PSU-E C WH	(0.38, 0.38) SDCM <3	+/-10%
8720169838949	DN500B 20S/840 PSU-E C WH	(0.38, 0.38) SDCM <3	+/-10%
8718699982522	DN460B LED11S/830 DIA- VLC-E C ELP3 WH P	(0.43, 0.40) SDCM<3	+/-10%
8718699982539	DN460B LED11S/830 DIA- VLC-E C WH P	(0.43, 0.40) SDCM<3	+/-10%
8718699982546	DN460B LED11S/840 DIA- VLC-E C WH P	(0.38, 0.38) SDCM<3	+/-10%
8718699982553	DN460B LED20S/840 DIA- VLC-E C WH P	(0.38, 0.38) SDCM<3	+/-10%
8718699982928	DN462B LED11S/830 DIA- VLC-E C WH PCC P	(0.43, 0.40) SDCM<3	+/-10%
8718699982942	DN462B LED11S/840 DIA- VLC-E C WH PCC P	(0.38, 0.38) SDCM<3	+/-10%
8720169013032	DN460B LED11S/830 PSD-E C WH P	(0.43, 0.40) SDCM<3	+/-10%
8720169013049	DN460B LED11S/840 PSD-E C WH P	(0.38, 0.38) SDCM<3	+/-10%
8718699984623	DN462B LED11S/830 PSU-E C WH PCC P	(0.44, 0.40) SDCM<3	+/-10%
87186999793197	DN460B LED11S/830 PSU-E C WH P	(0.43, 0.40) SDCM<3	+/-10%
87186999793203	DN460B LED11S/840 PSU-E C WH P	(0.38, 0.38) SDCM<3	+/-10%
87186999793395	DN460B LED11S/830 PSU-E C ELP3 WH P	(0.43, 0.40) SDCM<3	+/-10%
87186999793401	DN460B LED11S/840 PSU-E C ELP3 WH P	(0.38, 0.38) SDCM<3	+/-10%
8718699982935	DN462B LED11S/830 DIA- VLC-E C WH PCO P	(0.43, 0.40) SDCM<3	+/-10%
8718699982959	DN462B LED11S/840 DIA- VLC-E C WH PCO P	(0.38, 0.38) SDCM<3	+/-10%
87186999793357	DN462B LED11S/830 PSU-E C WH PCO P	(0.43, 0.40) SDCM<3	+/-10%

Order Code	Full Product Name	Aanvankelijke kleurkwaliteit	Tolerantie lichtstroom
87186999793364	DN462B LED11S/840 PSU-E C WH PCO P	(0.38, 0.38) SDCM<3	+/-10%
8718699983314	DN472B LED20S/830 DIA- VLC-E C WH PCO P	(0.43, 0.40) SDCM<3	+/-10%
8718699983338	DN472B LED20S/840 DIA- VLC-E C WH PCO P	(0.38, 0.38) SDCM<3	+/-10%
8720169013117	DN472B LED11S/830 PSD-E C WH PCO P	(0.43, 0.40) SDCM<3	+/-10%
8720169013124	DN472B LED11S/840 PSD-E C WH PCO P	(0.38, 0.38) SDCM<3	+/-10%
87186999793470	DN472B LED20S/830 PSU-E C WH PCO P	(0.43, 0.40) SDCM<3	+/-10%
87186999793487	DN472B LED20S/840 PSU-E C WH PCO P	(0.38, 0.38) SDCM<3	+/-10%
8720169839045	DN510B 20S/840 PSU-E OC WH	(0.38, 0.38) SDCM <3	+/-10%
8720169839090	DN510B 30S/840 PSU-E OC WH	(0.38, 0.38) SDCM <3	+/-10%
8719514567955	TCTT180 20S/840 PSU-E WH281	(0.38, 0.38) SDCM < 3	-10% / +10%
8720169081567	TCTT180 20S/830 PSU-E WH	(0.43, 0.40) SDCM < 3	-10% / +10%
8720169838963	DN500B 20S/840 PSU-E C BK	(0.38, 0.38) SDCM <3	+/-10%
8720169839076	DN510B 20S/840 PSU-E OC WH PCC	(0.38, 0.38) SDCM <3	+/-10%
8720169839038	DN510B 20S/840 PSU-E C BK	(0.38, 0.38) SDCM <3	+/-10%
8720169839052	DN510B 20S/840 PSU-E C WH PCC	(0.38, 0.38) SDCM <3	+/-10%
8720169838642	DN510B 20S/830 PSU-E C WH	(0.38, 0.38) SDCM <3	+/-10%
8720169839014	DN510B 20S/840 PSU-E C WH	(0.38, 0.38) SDCM <3	+/-10%
8720169839083	DN510B 30S/840 PSU-E C WH	(0.38, 0.38) SDCM <3	+/-10%
8719514564091	TCTT225 20S/840 PSU-E WH	(0.38, 0.38) SDCM < 3	-10% / +10%
8719514573925	TCTT225 20S/830 PSU-E WH	(0.43, 0.40) SDCM < 3	-10% / +10%
8719514563988	TCTT160 11S/840 PSU-E WH	(0.38, 0.38) SDCM < 3	-10% / +10%
8720169081888	TCTT160 11S/830 PSU-E WH	(0.43, 0.40) SDCM < 3	-10% / +10%
8720169838987	DN500B 20S/840 PSU-E C WH PCC	(0.38, 0.38) SDCM <3	+/-10%
8720169838994	DN500B 20S/840 PSU-E WR WH PCO	(0.38, 0.38) SDCM <3	+/-10%
8719514564107	TCTT230 20S/840 PSU-E WH	(0.38, 0.38) SDCM < 3	-10% / +10%
8719514573963	TCTT230 20S/830 PSU-E WH	(0.43, 0.40) SDCM < 3	-10% / +10%
8720169839021	DN510B 20S/840 PSU-E C GR	(0.38, 0.38) SDCM <3	+/-10%

### Prestaties gedurende tijd (conform IEC)

Order Code	Full Product Name	Uitvalpercentage driver na 5.000 uur
8718699982560	DN461B LED11S/830 DIA-VLC-E C ELP3 WH P	-
8718699982577	DN461B LED11S/830 DIA-VLC-E C WH P	-
8718699982584	DN461B LED11S/840 DIA-VLC-E C ELP3 WH P	-

Order Code	Full Product Name	Uitvalpercentage driver na 5.000 uur
8718699982591	DN461B LED11S/840 DIA-VLC-E C WH P	-
8718699982911	DN461B LED20S/840 DIA-VLC-E C WH P	-
8718699982973	DN463B LED11S/830 DIA-VLC-E C WH PCC P	-

## GreenSpace 2 DN460B/DN461B/DN470B/DN471B

Order Code	Full Product Name	Uitvalpercentage driver na 5.000 uur
8718699982980	DN463B LED11S/840 DIA-VLC-E C WH PCC P	-
8720169013056	DN461B LED11S/830 PSD-E C WH P	-
8720169013063	DN461B LED11S/840 PSD-E C WH P	-
8718699384661	DN463B LED11S/830 PSU-E C WH PCC P	1%
8718699384678	DN463B LED11S/840 PSU-E C WH PCC P	1%
8718699793234	DN461B LED11S/830 PSU-E C WH P	1%
8718699793241	DN461B LED11S/840 PSU-E C WH P	1%
8718699793432	DN461B LED11S/830 PSU-E C ELP3 WH P	1%
8718699793449	DN461B LED11S/840 PSU-E C ELP3 WH P	1%
8720169838970	DN500B 20S/840 PSU-E OC WH	10%
8719514563995	TCTT165 11S/840 PSU-E WH	-
8719514577046	TCTT165 11S/830 PSU-E WH	-
8720169839007	DN500B 20S/840 PSU-E OC WH PCC	10%
8718699983079	DN471B LED20S/830 WIA-E C WH P	-
8718699983093	DN471B LED20S/840 WIA-E C WH P	-
8718699983222	DN471B LED20S/830 DIA-VLC-E C ELP3 WH P	-
8718699983239	DN471B LED20S/830 DIA-VLC-E C WH P	-
8718699983246	DN471B LED20S/840 DIA-VLC-E C ELP3 WH P	-
8718699983253	DN471B LED20S/840 DIA-VLC-E C WH P	-
8718699983260	DN471B LED30S/830 DIA-VLC-E C ELP3 WH P	-
8718699983277	DN471B LED30S/830 DIA-VLC-E C WH P	-
8718699983284	DN471B LED30S/840 DIA-VLC-E C ELP3 WH P	-
8718699983291	DN471B LED30S/840 DIA-VLC-E C WH P	-
8718699983376	DN473B LED20S/830 DIA-VLC-E C WH PCC P	-
8718699983383	DN473B LED20S/840 DIA-VLC-E C WH PCC P	-
8718699983390	DN473B LED30S/830 DIA-VLC-E C WH PCC P	-
8718699983406	DN473B LED30S/840 DIA-VLC-E C WH PCC P	-
8720169013094	DN471B LED20S/830 PSD-E C WH P	-
8720169013100	DN471B LED20S/840 PSD-E C WH P	-
8718699384746	DN473B LED20S/830 PSU-E C WH PCC P	1%
8718699384753	DN473B LED20S/840 PSU-E C WH PCC P	1%
8718699793319	DN471B LED20S/830 PSU-E C WH P	1%
8718699793326	DN471B LED20S/840 PSU-E C WH P	1%
8718699793555	DN471B LED20S/830 PSU-E C ELP3 WH P	1%
8718699793562	DN471B LED20S/840 PSU-E C ELP3 WH P	1%
8718699945831	DN471B LED30S/830 PSU-E C WH P	1%
8718699945848	DN471B LED30S/840 PSU-E C WH P	1%
8718699945954	DN471B LED30S/830 PSU-E C ELP3 WH P	1%
8718699945961	DN471B LED30S/840 PSU-E C ELP3 WH P	1%
8719514574427	TCTT175 20S/830 PSU-E WH	-
8719514581371	TCTT175 20S/840 PSU-E WH	-
8720169838956	DN500B 20S/840 PSU-E C GR	10%

Order Code	Full Product Name	Uitvalpercentage driver na 5.000 uur
8718699982997	DN470B LED11S/840 DIA-VLC-E C WH P	-
8718699983000	DN470B LED20S/830 DIA-VLC-E C ELP3 WH P	-
8718699983017	DN470B LED20S/830 DIA-VLC-E C WH P	-
8718699983024	DN470B LED20S/840 DIA-VLC-E C ELP3 WH P	-
8718699983055	DN470B LED20S/840 WIA-E C WH P	-
8718699983116	DN472B LED20S/830 WIA-E C WH PCC P	-
8718699983130	DN472B LED20S/840 WIA-E C WH PCC P	-
8718699983185	DN470B LED30S/830 DIA-VLC-E C ELP3 WH P	-
8718699983192	DN470B LED30S/830 DIA-VLC-E C WH P	-
8718699983208	DN470B LED30S/840 DIA-VLC-E C ELP3 WH P	-
8718699983215	DN470B LED30S/840 DIA-VLC-E C WH P	-
8718699983307	DN472B LED20S/830 DIA-VLC-E C WH PCC P	-
8718699983321	DN472B LED20S/840 DIA-VLC-E C WH PCC P	-
8718699983345	DN472B LED30S/830 DIA-VLC-E C WH PCC P	-
8718699983352	DN472B LED30S/840 DIA-VLC-E C WH PCC P	-
8718699983666	DN470B LED20S/830 WIA-E C WH P	-
8720169012905	DN470B LED20S/830 PSD-E C WH P	-
8720169012912	DN470B LED30S/830 PSD-E C WH P	-
8720169013070	DN470B LED20S/840 PSD-E C WH P	-
8720169013087	DN470B LED30S/840 PSD-E C WH P	-
8718699384708	DN472B LED20S/830 PSU-E C WH PCC P	1%
8718699384715	DN472B LED20S/840 PSU-E C WH PCC P	1%
8718699793272	DN470B LED20S/830 PSU-E C WH P	1%
8718699793289	DN470B LED20S/840 PSU-E C WH P	1%
8718699793517	DN470B LED20S/830 PSU-E C ELP3 WH P	1%
8718699793524	DN470B LED20S/840 PSU-E C ELP3 WH P	1%
8718699945756	DN470B LED30S/830 PSU-E C WH P	1%
8718699945763	DN470B LED30S/840 PSU-E C WH P	1%
8718699945916	DN470B LED30S/830 PSU-E C ELP3 WH P	1%
8718699945923	DN470B LED30S/840 PSU-E C ELP3 WH P	1%
8720169839069	DN510B 20S/840 PSU-E WR WH PCO	10%
8720169838635	DN500B 11S/830 PSU-E C WH	10%
8720169838932	DN500B 20S/830 PSU-E C WH	10%
8720169838949	DN500B 20S/840 PSU-E C WH	10%
8718699982522	DN460B LED11S/830 DIA-VLC-E C ELP3 WH P	-
8718699982539	DN460B LED11S/830 DIA-VLC-E C WH P	-
8718699982546	DN460B LED11S/840 DIA-VLC-E C WH P	-
8718699982553	DN460B LED20S/840 DIA-VLC-E C WH P	-
8718699982928	DN462B LED11S/830 DIA-VLC-E C WH PCC P	-
8718699982942	DN462B LED11S/840 DIA-VLC-E C WH PCC P	-

## GreenSpace 2 DN460B/DN461B/DN470B/DN471B

Order Code	Full Product Name	Uitvalpercentage driver na 5.000 uur
8720169013032	DN460B LED11S/830 PSD-E C WH P	-
8720169013049	DN460B LED11S/840 PSD-E C WH P	-
8718699384623	DN462B LED11S/830 PSU-E C WH PCC P	1%
8718699793197	DN460B LED11S/830 PSU-E C WH P	1%
8718699793203	DN460B LED11S/840 PSU-E C WH P	1%
8718699793395	DN460B LED11S/830 PSU-E C ELP3 WH P	1%
8718699793401	DN460B LED11S/840 PSU-E C ELP3 WH P	1%
8718699982935	DN462B LED11S/830 DIA-VLC-E C WH PCO P	-
8718699982959	DN462B LED11S/840 DIA-VLC-E C WH PCO P	-
8718699793357	DN462B LED11S/830 PSU-E C WH PCO P	1%
8718699793364	DN462B LED11S/840 PSU-E C WH PCO P	1%
8718699983314	DN472B LED20S/830 DIA-VLC-E C WH PCO P	-
8718699983338	DN472B LED20S/840 DIA-VLC-E C WH PCO P	-
8720169013117	DN472B LED11S/830 PSD-E C WH PCO P	-
8720169013124	DN472B LED11S/840 PSD-E C WH PCO P	-
8718699793470	DN472B LED20S/830 PSU-E C WH PCO P	1%
8718699793487	DN472B LED20S/840 PSU-E C WH PCO P	1%

Order Code	Full Product Name	Uitvalpercentage driver na 5.000 uur
8720169839045	DN510B 20S/840 PSU-E OC WH	10%
8720169839090	DN510B 30S/840 PSU-E OC WH	10%
8719514567955	TCTT180 20S/840 PSU-E WH281	-
8720169081567	TCTT180 20S/830 PSU-E WH	-
8720169838963	DN500B 20S/840 PSU-E C BK	10%
8720169839076	DN510B 20S/840 PSU-E OC WH PCC	10%
8720169839038	DN510B 20S/840 PSU-E C BK	10%
8720169839052	DN510B 20S/840 PSU-E C WH PCC	10%
8720169838642	DN510B 20S/830 PSU-E C WH	10%
8720169839014	DN510B 20S/840 PSU-E C WH	10%
8720169839083	DN510B 30S/840 PSU-E C WH	10%
8719514564091	TCTT225 20S/840 PSU-E WH	-
8719514573925	TCTT225 20S/830 PSU-E WH	-
8719514563988	TCTT160 11S/840 PSU-E WH	-
8720169081888	TCTT160 11S/830 PSU-E WH	-
8720169838987	DN500B 20S/840 PSU-E C WH PCC	10%
8720169838994	DN500B 20S/840 PSU-E WR WH PCO	10%
8719514564107	TCTT230 20S/840 PSU-E WH	-
8719514573963	TCTT230 20S/830 PSU-E WH	-
8720169839021	DN510B 20S/840 PSU-E C GR	10%

### Productgegevens

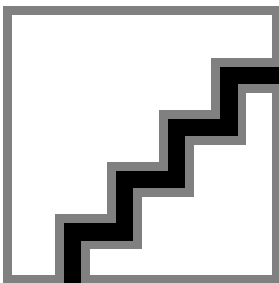
Order Code	Full Product Name	Code productfamilie
8718699982560	DN461B LED11S/830 DIA-VLC-E C ELP3 WH P	DN461B
8718699982577	DN461B LED11S/830 DIA-VLC-E C WH P	DN461B
8718699982584	DN461B LED11S/840 DIA-VLC-E C ELP3 WH P	DN461B
8718699982591	DN461B LED11S/840 DIA-VLC-E C WH P	DN461B
8718699982911	DN461B LED20S/840 DIA-VLC-E C WH P	DN461B
8718699982973	DN463B LED11S/830 DIA-VLC-E C WH PCC P	DN463B
8718699982980	DN463B LED11S/840 DIA-VLC-E C WH PCC P	DN463B
8720169013056	DN461B LED11S/830 PSD-E C WH P	DN461B
8720169013063	DN461B LED11S/840 PSD-E C WH P	DN461B
8718699384661	DN463B LED11S/830 PSU-E C WH PCC P	DN463B
8718699384678	DN463B LED11S/840 PSU-E C WH PCC P	DN463B
8718699793234	DN461B LED11S/830 PSU-E C WH P	DN461B
8718699793241	DN461B LED11S/840 PSU-E C WH P	DN461B
8718699793432	DN461B LED11S/830 PSU-E C ELP3 WH P	DN461B
8718699793449	DN461B LED11S/840 PSU-E C ELP3 WH P	DN461B
8720169838970	DN500B 20S/840 PSU-E OC WH	DN500B
8719514563995	TCTT165 11S/840 PSU-E WH	TCTTPF
8719514577046	TCTT165 11S/830 PSU-E WH	TCTTPF
8720169839007	DN500B 20S/840 PSU-E OC WH PCC	DN500B
8718699983079	DN471B LED20S/830 WIA-E C WH P	DN471B
8718699983093	DN471B LED20S/840 WIA-E C WH P	DN471B
8718699983222	DN471B LED20S/830 DIA-VLC-E C ELP3 WH P	DN471B
8718699983239	DN471B LED20S/830 DIA-VLC-E C WH P	DN471B
8718699983246	DN471B LED20S/840 DIA-VLC-E C ELP3 WH P	DN471B
8718699983253	DN471B LED20S/840 DIA-VLC-E C WH P	DN471B
8718699983260	DN471B LED30S/830 DIA-VLC-E C ELP3 WH P	DN471B

Order Code	Full Product Name	Code productfamilie
8718699983277	DN471B LED30S/830 DIA-VLC-E C WH P	DN471B
8718699983284	DN471B LED30S/840 DIA-VLC-E C ELP3 WH P	DN471B
8718699983291	DN471B LED30S/840 DIA-VLC-E C WH P	DN471B
8718699983376	DN473B LED20S/830 DIA-VLC-E C WH PCC P	DN473B
8718699983383	DN473B LED20S/840 DIA-VLC-E C WH PCC P	DN473B
8718699983390	DN473B LED30S/830 DIA-VLC-E C WH PCC P	DN473B
8718699983406	DN473B LED30S/840 DIA-VLC-E C WH PCC P	DN473B
8720169013094	DN471B LED20S/830 PSD-E C WH P	DN471B
8720169013100	DN471B LED20S/840 PSD-E C WH P	DN471B
8718699384746	DN473B LED20S/830 PSU-E C WH PCC P	DN473B
8718699384753	DN473B LED20S/840 PSU-E C WH PCC P	DN473B
8718699793319	DN471B LED20S/830 PSU-E C WH P	DN471B
8718699793326	DN471B LED20S/840 PSU-E C WH P	DN471B
8718699793555	DN471B LED20S/830 PSU-E C ELP3 WH P	DN471B
8718699793562	DN471B LED20S/840 PSU-E C ELP3 WH P	DN471B
8718699945831	DN471B LED30S/830 PSU-E C WH P	DN471B
8718699945848	DN471B LED30S/840 PSU-E C WH P	DN471B
8718699945954	DN471B LED30S/830 PSU-E C ELP3 WH P	DN471B
8718699945961	DN471B LED30S/840 PSU-E C ELP3 WH P	DN471B
8719514574427	TCTT175 20S/830 PSU-E WH	TCTTPF
8719514581371	TCTT175 20S/840 PSU-E WH	TCTTPF
8720169838956	DN500B 20S/840 PSU-E C GR	DN500B
8718699982997	DN470B LED11S/840 DIA-VLC-E C WH P	DN470B
8718699983000	DN470B LED20S/830 DIA-VLC-E C ELP3 WH P	DN470B
8718699983017	DN470B LED20S/830 DIA-VLC-E C WH P	DN470B
8718699983024	DN470B LED20S/840 DIA-VLC-E C ELP3 WH P	DN470B

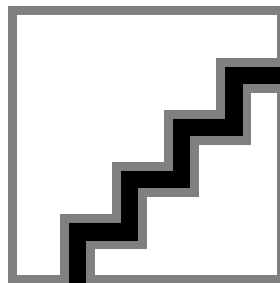
## GreenSpace 2 DN460B/DN461B/DN470B/DN471B

Order Code	Full Product Name	Code productfamilie	Order Code	Full Product Name	Code productfamilie
8718699983055	DN470B LED20S/840 WIA-E C WH P	DN470B	8720169013049	DN460B LED11S/840 PSD-E C WH P	DN460B
8718699983116	DN472B LED20S/830 WIA-E C WH PCC P	DN472B	8718699384623	DN462B LED11S/830 PSU-E C WH PCC P	DN462B
8718699983130	DN472B LED20S/840 WIA-E C WH PCC P	DN472B	8718699793197	DN460B LED11S/830 PSU-E C WH P	DN460B
8718699983185	DN470B LED30S/830 DIA-VLC-E C ELP3 WH P	DN470B	8718699793203	DN460B LED11S/840 PSU-E C WH P	DN460B
8718699983192	DN470B LED30S/830 DIA-VLC-E C WH P	DN470B	8718699793395	DN460B LED11S/830 PSU-E C ELP3 WH P	DN460B
8718699983208	DN470B LED30S/840 DIA-VLC-E C ELP3 WH P	DN470B	8718699793401	DN460B LED11S/840 PSU-E C ELP3 WH P	DN460B
8718699983215	DN470B LED30S/840 DIA-VLC-E C WH P	DN470B	8718699982935	DN462B LED11S/830 DIA-VLC-E C WH PCO P	DN462B
8718699983307	DN472B LED20S/830 DIA-VLC-E C WH PCC P	DN472B	8718699982959	DN462B LED11S/840 DIA-VLC-E C WH PCO P	DN462B
8718699983321	DN472B LED20S/840 DIA-VLC-E C WH PCC P	DN472B	8718699793357	DN462B LED11S/830 PSU-E C WH PCO P	DN462B
8718699983321	DN472B LED20S/840 DIA-VLC-E C WH PCC P	DN472B	8718699793364	DN462B LED11S/840 PSU-E C WH PCO P	DN462B
8718699983345	DN472B LED30S/830 DIA-VLC-E C WH PCC P	DN472B	8718699983314	DN472B LED20S/830 DIA-VLC-E C WH PCO P	DN472B
8718699983352	DN472B LED30S/840 DIA-VLC-E C WH PCC P	DN472B	8718699983338	DN472B LED20S/840 DIA-VLC-E C WH PCO P	DN472B
8718699983666	DN470B LED20S/830 WIA-E C WH P	DN470B	8720169013117	DN472B LED11S/830 PSD-E C WH PCO P	DN472B
8720169012905	DN470B LED20S/830 PSD-E C WH P	DN470B	8720169013124	DN472B LED11S/840 PSD-E C WH PCO P	DN472B
8720169012912	DN470B LED30S/830 PSD-E C WH P	DN470B	8718699793470	DN472B LED20S/830 PSU-E C WH PCO P	DN472B
8720169013070	DN470B LED20S/840 PSD-E C WH P	DN470B	8718699793487	DN472B LED20S/840 PSU-E C WH PCO P	DN472B
8720169013087	DN470B LED30S/840 PSD-E C WH P	DN470B	8720169839045	DN510B 20S/840 PSU-E OC WH	DN510B
8718699384708	DN472B LED20S/830 PSU-E C WH PCC P	DN472B	8720169839090	DN510B 30S/840 PSU-E OC WH	DN510B
8718699384715	DN472B LED20S/840 PSU-E C WH PCC P	DN472B	8719514567955	TCTT180 20S/840 PSU-E WH281	TCTTPF
8718699793272	DN470B LED20S/830 PSU-E C WH P	DN470B	8720169081567	TCTT180 20S/830 PSU-E WH	TCTTPF
8718699793289	DN470B LED20S/840 PSU-E C WH P	DN470B	8720169838963	DN500B 20S/840 PSU-E C BK	DN500B
8718699793517	DN470B LED20S/830 PSU-E C ELP3 WH P	DN470B	8720169839076	DN510B 20S/840 PSU-E OC WH PCC	DN510B
8718699793524	DN470B LED20S/840 PSU-E C ELP3 WH P	DN470B	8720169839038	DN510B 20S/840 PSU-E C BK	DN510B
8718699945756	DN470B LED30S/830 PSU-E C WH P	DN470B	8720169839052	DN510B 20S/840 PSU-E C WH PCC	DN510B
8718699945763	DN470B LED30S/840 PSU-E C WH P	DN470B	8720169838642	DN510B 20S/830 PSU-E C WH	-
8718699945916	DN470B LED30S/830 PSU-E C ELP3 WH P	DN470B	8720169839014	DN510B 20S/840 PSU-E C WH	DN510B
8718699945923	DN470B LED30S/840 PSU-E C ELP3 WH P	DN470B	8720169839083	DN510B 30S/840 PSU-E C WH	DN510B
8720169839069	DN510B 20S/840 PSU-E WR WH PCO	DN510B	8719514564091	TCTT225 20S/840 PSU-E WH	TCTTPF
8720169838635	DN500B 11S/830 PSU-E C WH	-	8719514573925	TCTT225 20S/830 PSU-E WH	TCTTPF
8720169838932	DN500B 20S/830 PSU-E C WH	DN500B	8719514563988	TCTT160 11S/840 PSU-E WH	TCTTPF
8720169838949	DN500B 20S/840 PSU-E C WH	DN500B	8720169081888	TCTT160 11S/830 PSU-E WH	TCTTPF
8718699982522	DN460B LED11S/830 DIA-VLC-E C ELP3 WH P	DN460B	8720169838987	DN500B 20S/840 PSU-E C WH PCC	DN500B
8718699982539	DN460B LED11S/830 DIA-VLC-E C WH P	DN460B	8720169838994	DN500B 20S/840 PSU-E WR WH PCO	DN500B
8718699982546	DN460B LED11S/840 DIA-VLC-E C WH P	DN460B	8719514564107	TCTT230 20S/840 PSU-E WH	TCTTPF
8718699982553	DN460B LED20S/840 DIA-VLC-E C WH P	DN460B	8719514573963	TCTT230 20S/830 PSU-E WH	TCTTPF
8718699982928	DN462B LED11S/830 DIA-VLC-E C WH PCC P	DN462B	8720169839021	DN510B 20S/840 PSU-E C GR	DN510B
8718699982942	DN462B LED11S/840 DIA-VLC-E C WH PCC P	DN462B			
8720169013032	DN460B LED11S/830 PSD-E C WH P	DN460B			

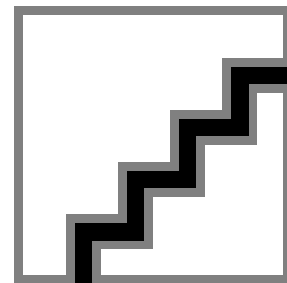
### Polar Wide Diagrams



Polar Normal (separate) - 910505105013

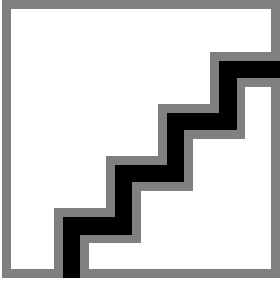


Polar Normal (separate) - 910505105004

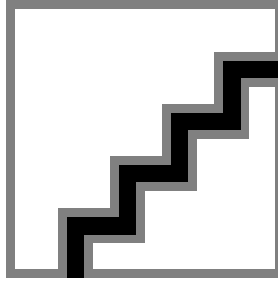


Polar Normal (separate) - 910505105017

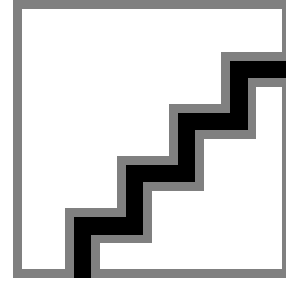
Polar Wide Diagrams



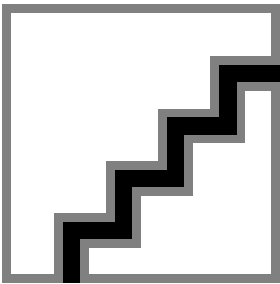
Polar Normal (separate) - 910505105005



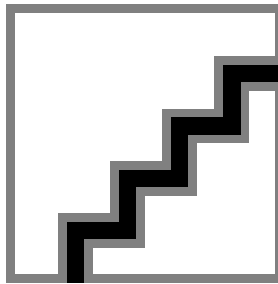
Polar Normal (separate) - 910505105014



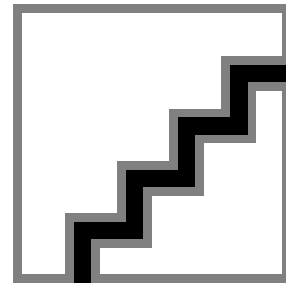
Polar Normal (separate) - 910505105007



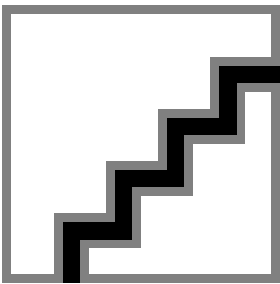
Polar Normal (separate) - 910505105018



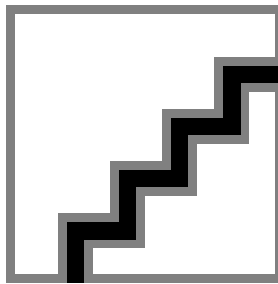
Polar Normal (separate) - 910505105019



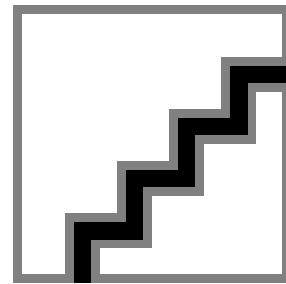
Polar Normal (separate) - 910505105009



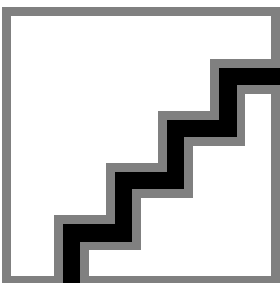
Polar Normal (separate) - 910505105010



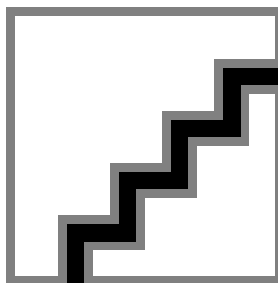
Polar Normal (separate) - 910505105011



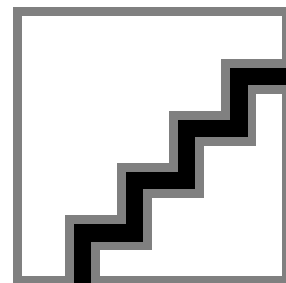
Polar Normal (separate) - 910505105003



Polar Normal (separate) - 910505105015

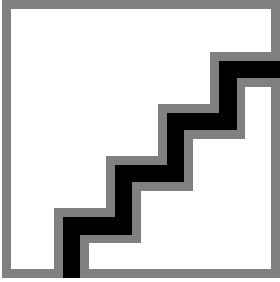


Polar Normal (separate) - 910505105016

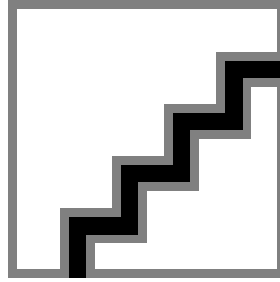


Polar Normal (separate) - 910505105008

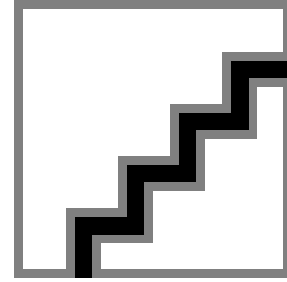
Polar Wide Diagrams



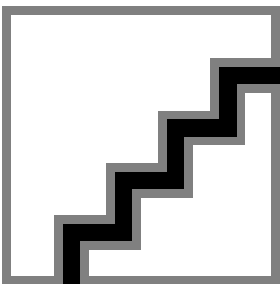
Polar Normal (separate) - 910505105012



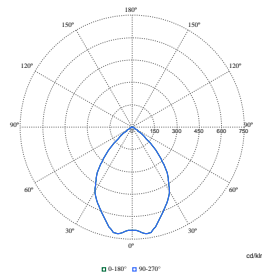
Polar Normal (separate) - 910505105006



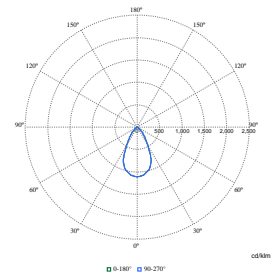
Polar Normal (separate) - 910505104972



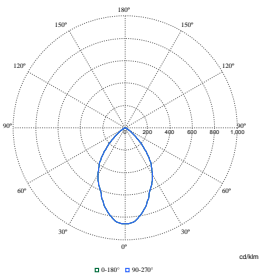
Polar Normal (separate) - 910505104973



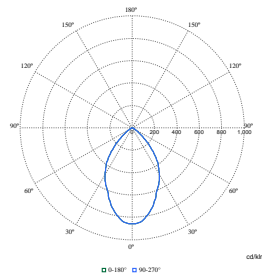
Polar Normal (separate) - DN460BN - 910505102113



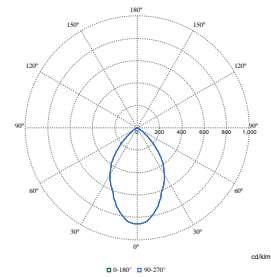
Polar Normal (separate) - DN460BN - 910505102118



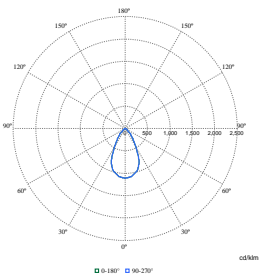
Polar Normal (separate) - DN460BN - 910505102035



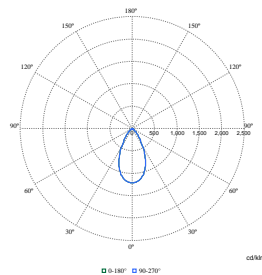
Polar Normal (separate) - DN460BN - 910505102082



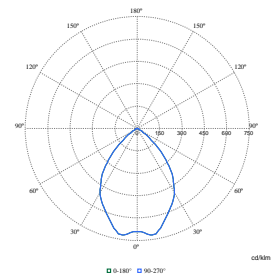
Polar Normal (separate) - DN460BN - 910505102036



Polar Normal (separate) - DN460BN - 910505102119



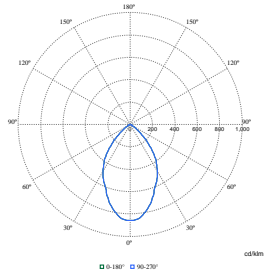
Polar Normal (separate) - DN460BN - 910505102087



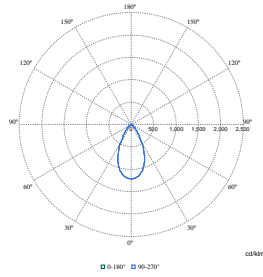
Polar Normal (separate) - DN460BN - 910505102091

# GreenSpace 2 DN460B/DN461B/DN470B/DN471B

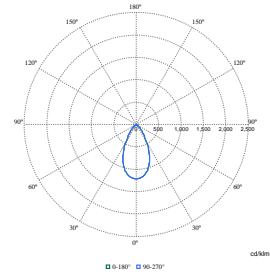
## Polar Wide Diagrams



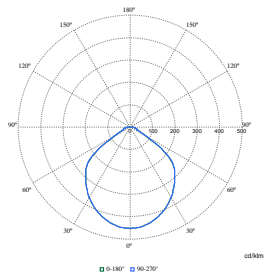
**Polar Normal (separate) - DN460BN - 910505102285**



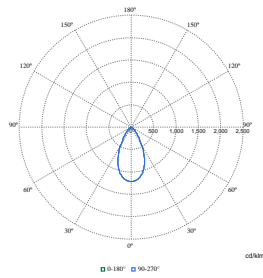
**Polar Normal (separate) - DN460BN - 910505102110**



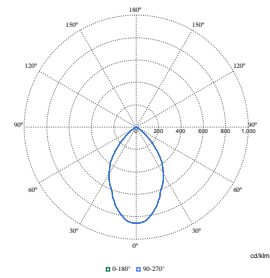
**Polar Normal (separate) - DN460BN - 910505102040**



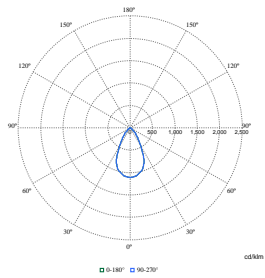
**Polar Normal (separate) - DN460BN - 910505102293**



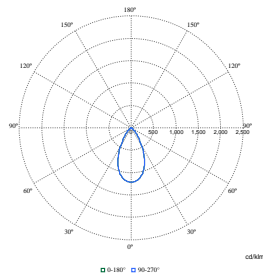
**Polar Normal (separate) - DN460BN - 910505102291**



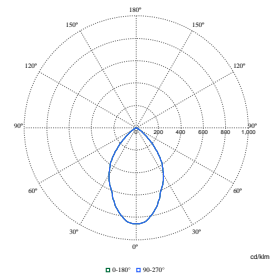
**Polar Normal (separate) - DN460BN - 910505102102**



**Polar Normal (separate) - DN460BN - 910505102120**



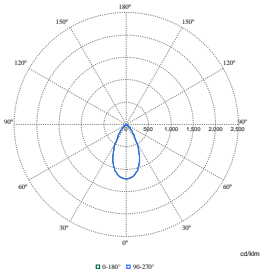
**Polar Normal (separate) - DN460BN - 910505102107**



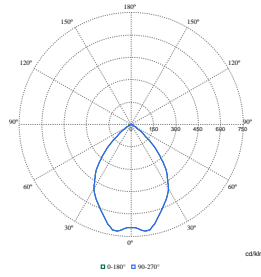
**Polar Normal (separate) - DN460BN - 910505102081**

# GreenSpace 2 DN460B/DN461B/DN470B/DN471B

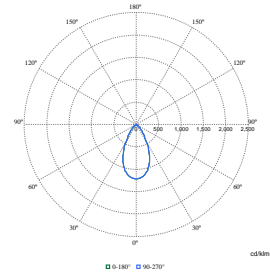
## Polar Wide Diagrams



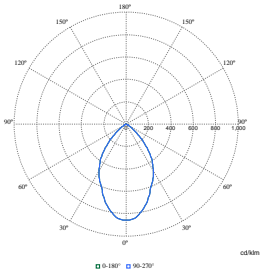
**Polar Normal (separate) - DN460BN - 910505102103**



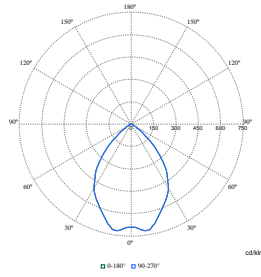
**Polar Normal (separate) - DN460BN - 910505102111**



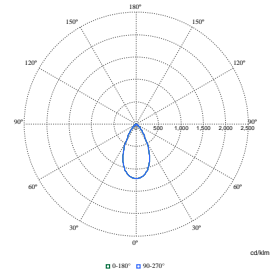
**Polar Normal (separate) - DN460BN - 910505102108**



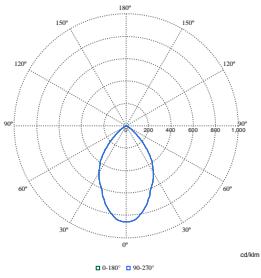
**Polar Normal (separate) - DN460BN - 910505102271**



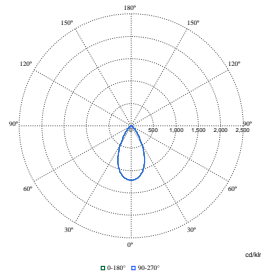
**Polar Normal (separate) - DN460BN - 910505102093**



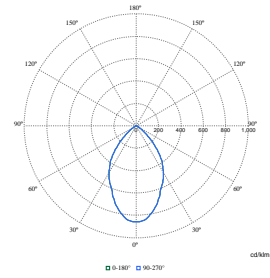
**Polar Normal (separate) - DN460BN - 910505102106**



**Polar Normal (separate) - DN460BN - 910505102272**

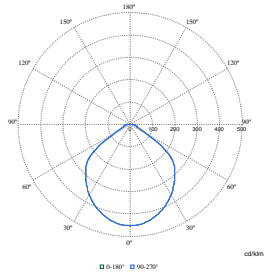


**Polar Normal (separate) - DN460BN - 910505102109**

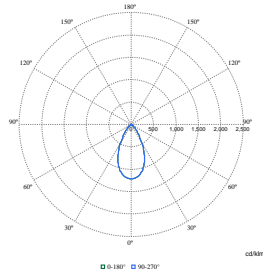


**Polar Normal (separate) - DN460BN - 910505102098**

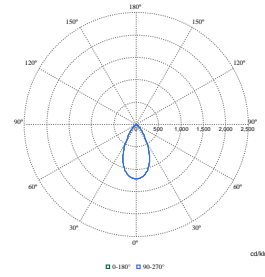
## Polar Wide Diagrams



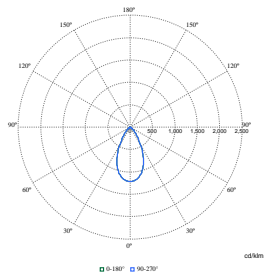
**Polar Normal (separate) - DN460BN - 910505102292**



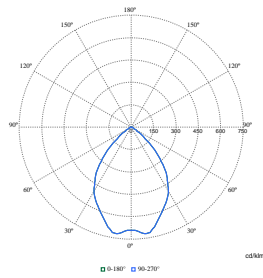
**Polar Normal (separate) - DN460BN - 910505102104**



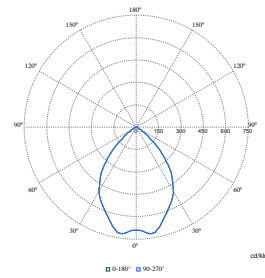
**Polar Normal (separate) - DN460BN - 910505102089**



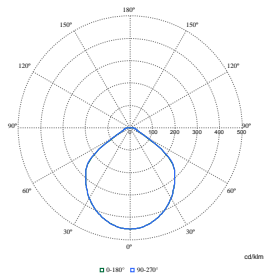
**Polar Normal (separate) - DN460BN - 910505102287**



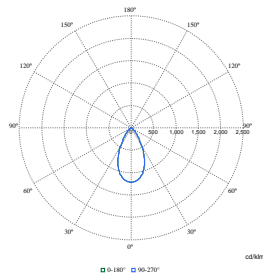
**Polar Normal (separate) - DN460BN - 910505102115**



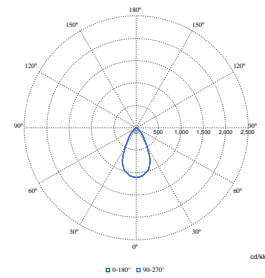
**Polar Normal (separate) - DN460BN - 910505102116**



**Polar Normal (separate) - DN460BN - 910505102075**



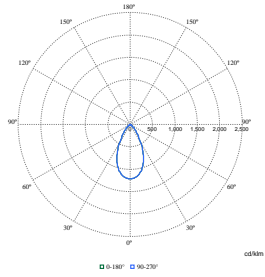
**Polar Normal (separate) - DN460BN - 910505102038**



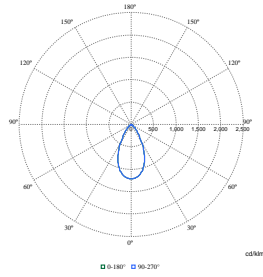
**Polar Normal (separate) - DN460BN - 910505102077**

# GreenSpace 2 DN460B/DN461B/DN470B/DN471B

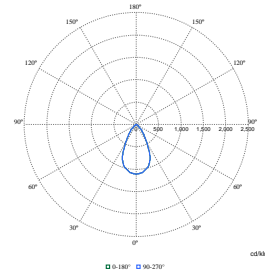
## Polar Wide Diagrams



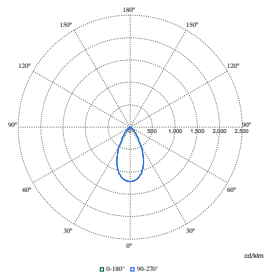
**Polar Normal (separate) - DN460BN - 910505102071**



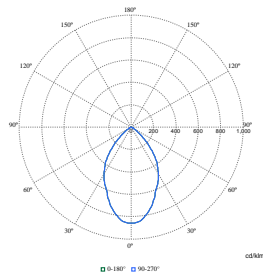
**Polar Normal (separate) - DN460BN - 910505102290**



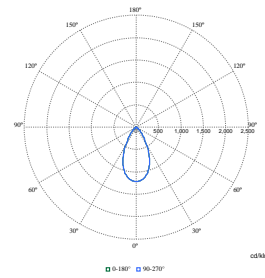
**Polar Normal (separate) - DN460BN - 910505102078**



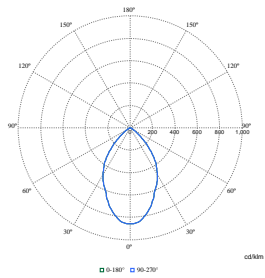
**Polar Normal (separate) - DN460BN - 910505102037**



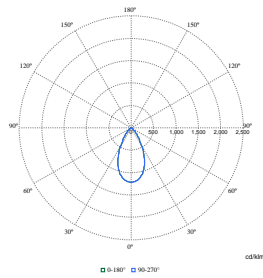
**Polar Normal (separate) - DN460BN - 910505102034**



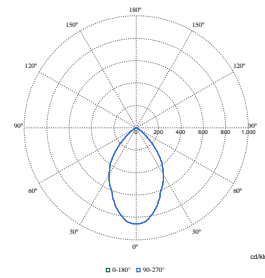
**Polar Normal (separate) - DN460BN - 910505102286**



**Polar Normal (separate) - DN460BN - 910505102079**



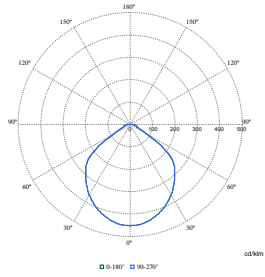
**Polar Normal (separate) - DN460BN - 910505102039**



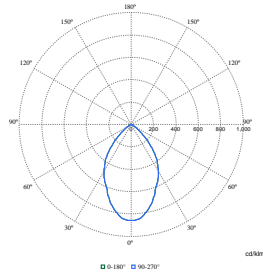
**Polar Normal (separate) - DN460BN - 910505102284**

# GreenSpace 2 DN460B/DN461B/DN470B/DN471B

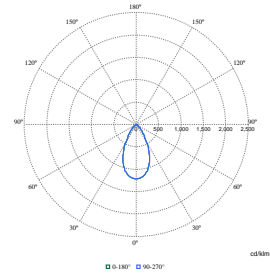
## Polar Wide Diagrams



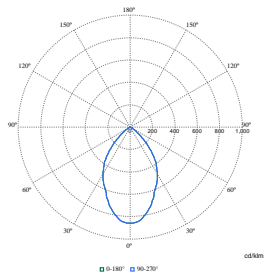
**Polar Normal (separate) - DN460BN - 910505102073**



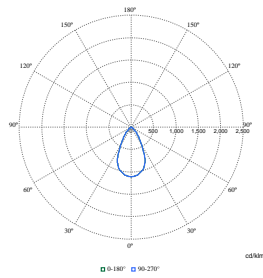
**Polar Normal (separate) - DN460BN - 910505102099**



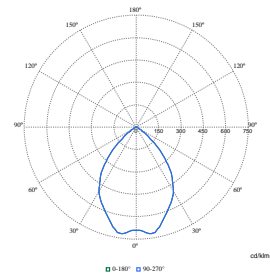
**Polar Normal (separate) - DN460BN - 910505102105**



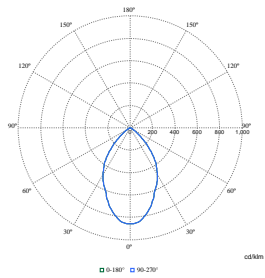
**Polar Normal (separate) - DN460BN - 910505102033**



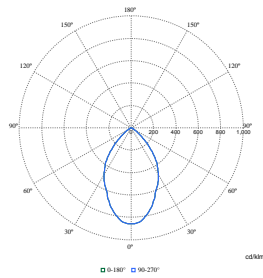
**Polar Normal (separate) - DN460BN - 910505102121**



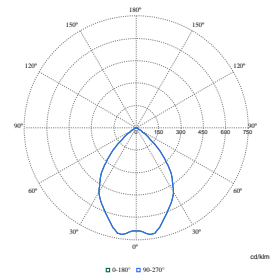
**Polar Normal (separate) - DN460BN - 910505102074**



**Polar Normal (separate) - DN460BN - 910505102085**

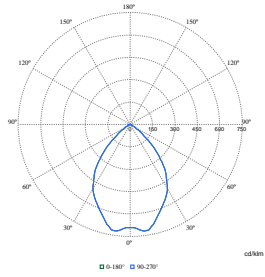


**Polar Normal (separate) - DN460BN - 910505102288**

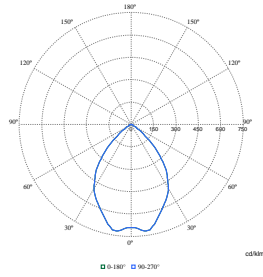


**Polar Normal (separate) - DN460BN - 912500100062**

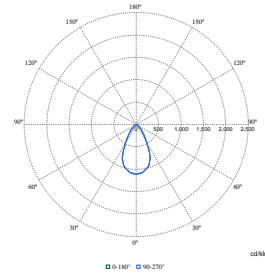
## Polar Wide Diagrams



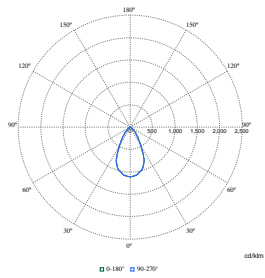
**Polar Normal (separate) - DN460BN - 912500100070**



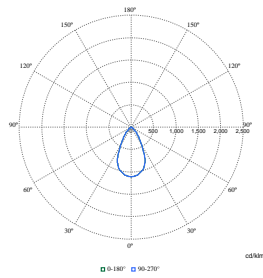
**Polar Normal (separate) - DN460BN - 912500100071**



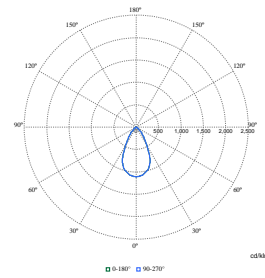
**Polar Normal (separate) - DN460BN - 912500100066**



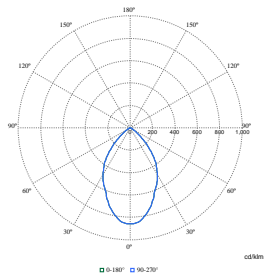
**Polar Normal (separate) - DN460BN - 912500100075**



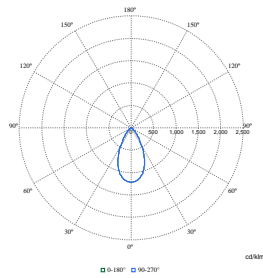
**Polar Normal (separate) - DN460BN - 912500100067**



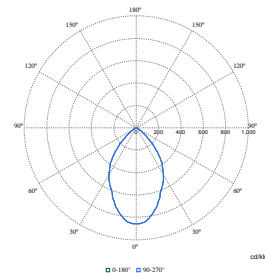
**Polar Normal (separate) - DN460BN - 912500100074**



**Polar Normal (separate) - DN460BN - 912500100515**

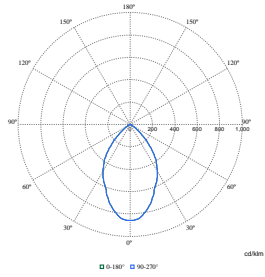


**Polar Normal (separate) - DN460BN - 912500100519**

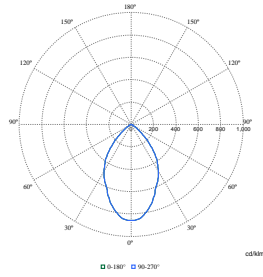


**Polar Normal (separate) - DN460BN - 912500100522**

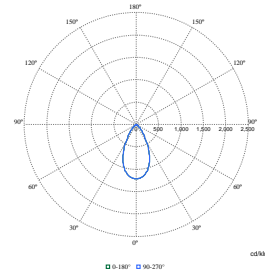
## Polar Wide Diagrams



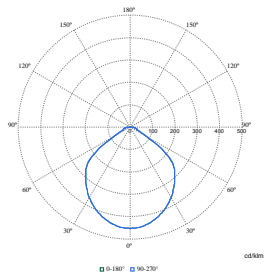
**Polar Normal (separate) - DN460BN - 912500100523**



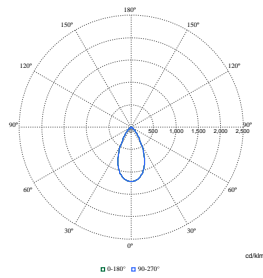
**Polar Normal (separate) - DN460BN - 912500100514**



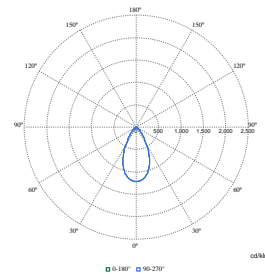
**Polar Normal (separate) - DN460BN - 912500100527**



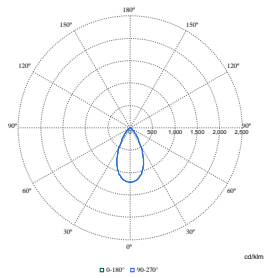
**Polar Normal (separate) - DN460BN - 912500100531**



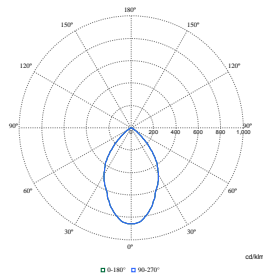
**Polar Normal (separate) - DN460BN - 912500100526**



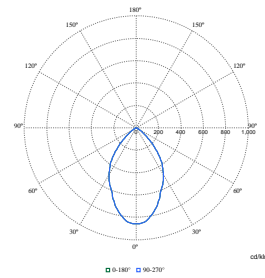
**Polar Normal (separate) - DN460BN - 912500100538**



**Polar Normal (separate) - DN460BN - 912500100518**

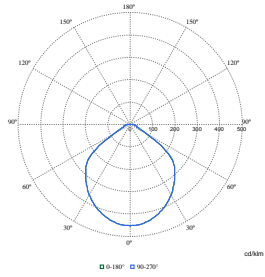


**Polar Normal (separate) - DN460BN - 912500100535**

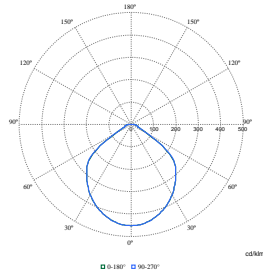


**Polar Normal (separate) - DN460BN - 912500100534**

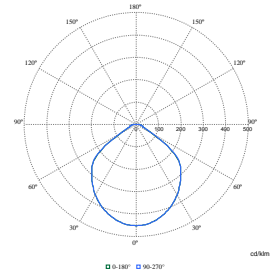
## Polar Wide Diagrams



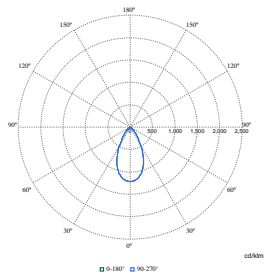
**Polar Normal (separate) - DN460BN - 912500100543**



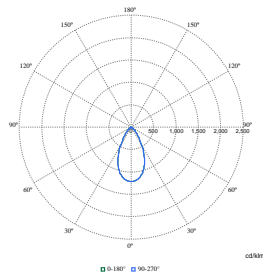
**Polar Normal (separate) - DN460BN - 912500100542**



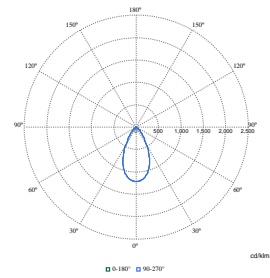
**Polar Normal (separate) - DN460BN - 912500100530**



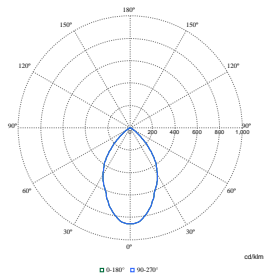
**Polar Normal (separate) - DN460BN - 912500100539**



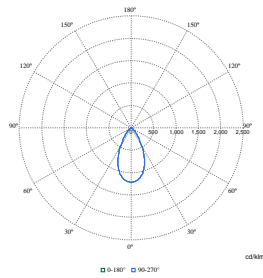
**Polar Normal (separate) - DN460BN - 912500100550**



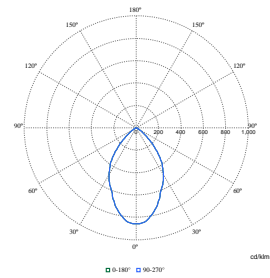
**Polar Normal (separate) - DN460BN - 912500100551**



**Polar Normal (separate) - DN460BN - 912500100547**



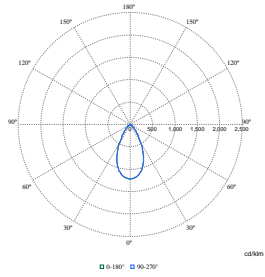
**Polar Normal (separate) - DN460BN - 912500101315**



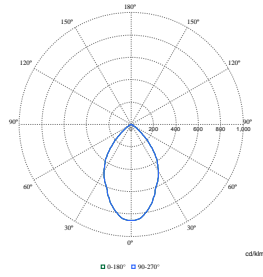
**Polar Normal (separate) - DN460BN - 912500100546**

# GreenSpace 2 DN460B/DN461B/DN470B/DN471B

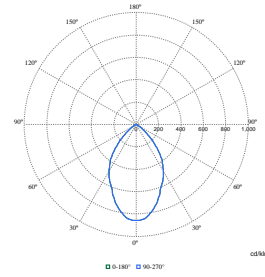
## Polar Wide Diagrams



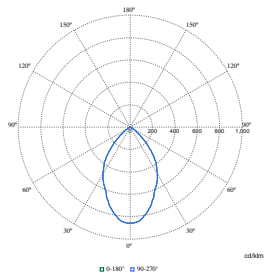
Polar Normal (separate) - DN460BN - 912500101314



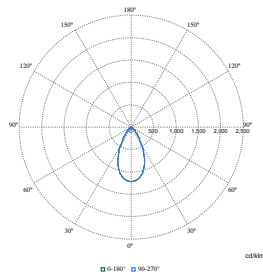
Polar Normal (separate) - DN460BN - 912500101322



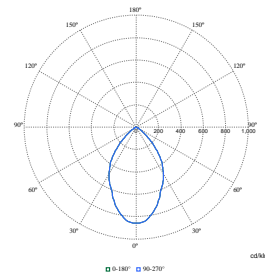
Polar Normal (separate) - DN460BN - 912500101307



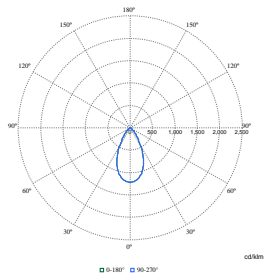
Polar Normal (separate) - DN460BN - 912500101323



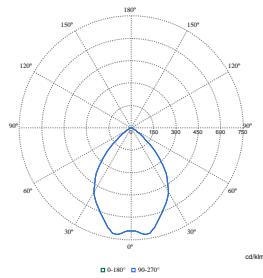
Polar Normal (separate) - DN460BN - 912500101326



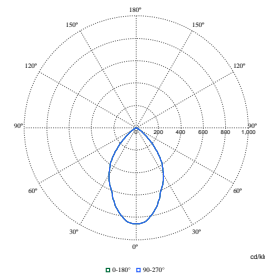
Polar Normal (separate) - DN460BN - 912500101305



Polar Normal (separate) - DN460BN - 912500101327

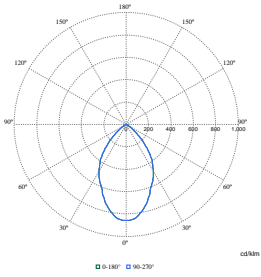


Polar Normal (separate) - DN460BN - 910505102072

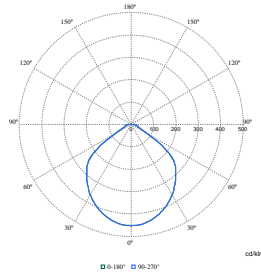


Polar Normal (separate) - DN460BN - 910505102080

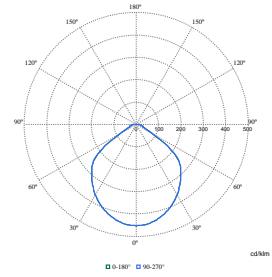
Polar Wide Diagrams



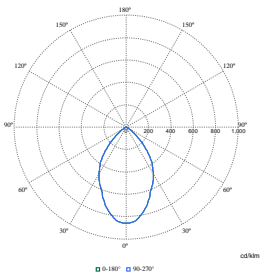
Polar Normal (separate) - DN460BN - 910505102101



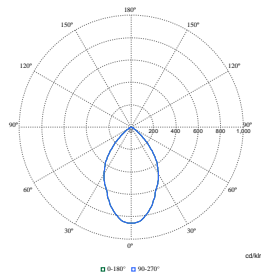
Polar Normal (separate) - DN460BN - 910505102114



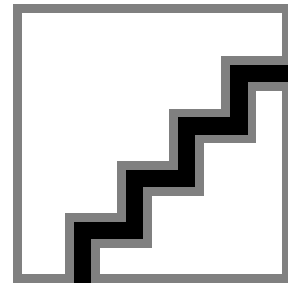
Polar Normal (separate) - DN460BN - 910505102112



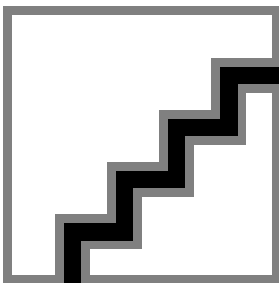
Polar Normal (separate) - DN460BN - 910505102147



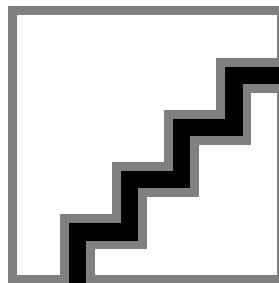
Polar Normal (separate) - DN460BN - 910505102289



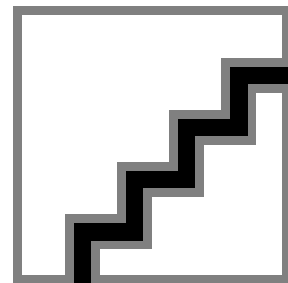
Polar Normal (separate) - TCTTPFI - 912500102943



Polar Normal (separate) - TCTTPFI - 912500106265

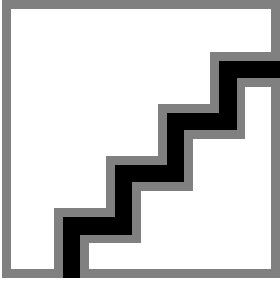


Polar Normal (separate) - TCTTPFI - 912500102954

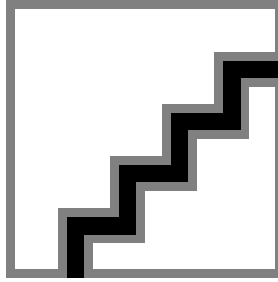


Polar Normal (separate) - TCTTPFI - 912500102942

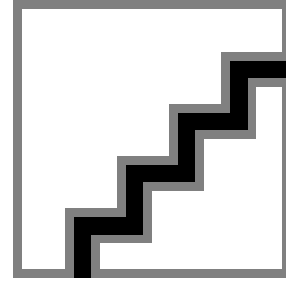
Polar Wide Diagrams



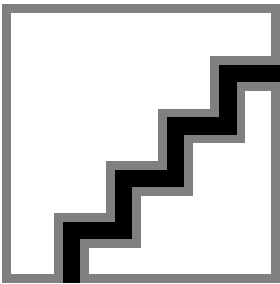
Polar Normal (separate) - TCTTPI -  
912500103778



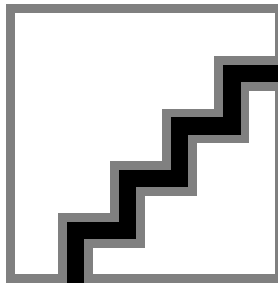
Polar Normal (separate) - TCTTPI -  
912500103829



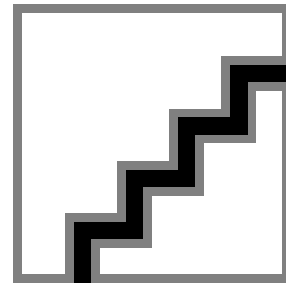
Polar Normal (separate) - TCTTPI -  
912500104075



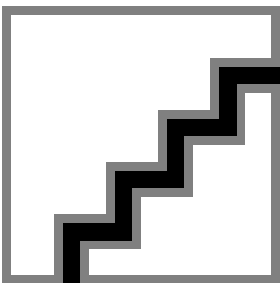
Polar Normal (separate) - TCTTPI -  
912500106233



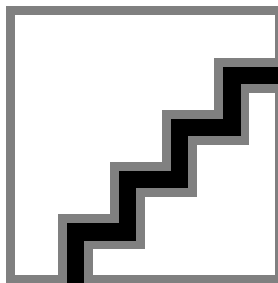
Polar Normal (separate) - TCTTPI -  
912500103323



Polar Normal (separate) - TCTTPI -  
912500102953



Polar Normal (separate) - TCTTPI -  
912500103782



Polar Normal (separate) - TCTTPI -  
912500104377

## GreenSpace 2 DN460B/DN461B/DN470B/DN471B

