



# Philips GreenSpace – High-efficiency, sustainable LED solution with 75% bio- circular materials

## GreenSpace

GreenSpace is a perfect solution where customers want to strike the ideal balance between their initial investment and the cost of the installation during its lifetime while they are covering multiple applications. GreenSpace features the latest LED technology which enables extremely low power consumption. With its perfect fit you'll get the LED downlight that always fits and looks perfect at the same time. This perfect fit is available for cut out sizes from 150 mm to 280 mm which is the ideal solution for your renovation project. It saves the hassle, avoids time consuming and costly adaptor rings. GreenSpace is designed for Circular Economy with optimized performance, extended lifetime through upgradability and integration options, ease of customization, recycling and disassembly. Housing and rim are made with 75% recycled or mass-balanced bio-circular material, making it a conscious choice for those that want to contribute to a circular economy. GreenSpace can be connected to wireless systems to create a smart office lighting solution with optional integrated sensors as well. Its long lifetime with 100,000 hours at L100 (CLO), L90 (700lm/1400lm/on request 2000lm) makes it a true 'fit and forget' solution.

## Benefits

- Low return of investment years due to high efficiency and long lifetime
- Wide range of mounting options to fit different ceiling types
- The perfect fit for retrofit projects, possibility to create custom sizes
- Avoids time consuming and costly adaptor rings and get the downlight that always fits
- Office-compliant, with stable color performance and wide light distribution
- Clean & beautiful ceilings with integrated sensing options for daylight control and presence detection

## Features

- Mini (DN500B) and compact (DN510B) sizes for recessed
- Surface mounted, track and pendant versions available
- Custom cut-out sizes between 150mm-280 mm, in total 28 sizes available
- High-gloss (CR) and White (WR) reflector types
- UGR19 version with anti-glare ring (OC reflector)
- Available in 700-5000 lumen to cover applications with higher ceilings
- Selection of rim colors: White, silver and black as standard, others on request
- IP54 version with a front cover and integrated sensors
- Emergency lighting option available
- Configurable with many driver types such as DALI and wireless with InterAct ready
- Fast installation due to variety of connections and cables
- Printed housing & rim parts with 75% recycled or mass balanced bio-circular material

## Application

- Offices
- Retail
- Hospitals and Care Centers
- Municipal Buildings
- Education
- Healthcare

## Versions

GreenSpace Mini, office-compliant reflector, white rim



GreenSpace Mini, office-compliant reflector, protection cover clear, white rim



## Versions



GreenSpace EU gen 2-DN473B



GreenSpace EU gen 2-DN472B



GreenSpace Mini, high-gloss reflector, white rim



GreenSpace Compact, office-compliant reflector, white rim



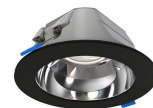
GreenSpace Mini, high-gloss reflector, grey rim



GreenSpace Compact, white reflector, protection cover opal, white rim



GreenSpace Compact DN472B with Poycarbonate Cover Opal



GreenSpace Mini, high-gloss reflector, black rim

# GreenSpace

## Versions



GreenSpace Compact, office-compliant reflector, protection cover clear, white rim



GreenSpace Compact, high-gloss reflector, black rim



GreenSpace Compact, high-gloss reflector, protection cover clear, white rim



GreenSpace Compact, high-gloss reflector, white rim



GreenSpace Mini, high-gloss reflector, protection cover clear, white rim

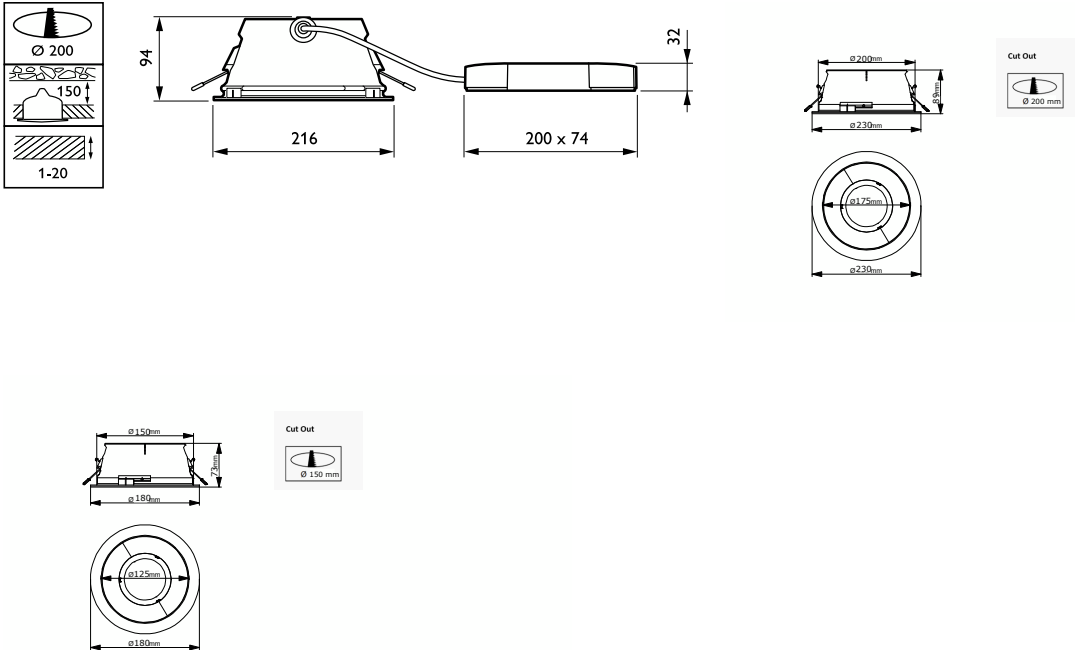


GreenSpace Mini, white reflector, protection cover opal, white rim



GreenSpace Compact, high-gloss reflector, grey rim

Dimensional drawing



General Information	
Driver included	Yes
Gear	-
Number of gear units	1 unit
Operating and Electrical	
Protection class IEC	Safety class II
Line Frequency	50 to 60 Hz
Controls and Dimming	
Dimmable	No
Mechanical and Housing	
Mech. impact protection code	IK02
Approval and Application	
CE mark	Yes
Flammability mark	-
Initial Performance (IEC Compliant)	
Luminous flux tolerance	+/-10%

General Information

Order Code	Full Product Name	Lamp family code	Light source replaceable	Service tag
910505105007	DN500B 20S/840 PSU-E OC WH	-	-	-
910505105010	DN500B 20S/840 PSU-E OC WH PCC	-	-	-
912500100526	DN471B LED20S/830 PSU-E C WH P	LED20S	No	Yes
910505105005	DN500B 20S/840 PSU-E C GR	-	-	-
912500101305	DN470B LED30S/830 PSU-E C WH P	-	No	Yes
910505105016	DN510B 20S/840 PSU-E WR WH PCO	-	-	-
910505105003	DN500B 20S/830 PSU-E C WH	-	-	-
910505105004	DN500B 20S/840 PSU-E C WH	-	-	-
912500100543	DN472B LED20S/840 PSU-E C WH PCO P	LED20S	No	Yes
910505105014	DN510B 20S/840 PSU-E OC WH	-	-	-
910505105019	DN510B 30S/840 PSU-E OC WH	-	-	-
910505105006	DN500B 20S/840 PSU-E C BK	-	-	-
910505105017	DN510B 20S/840 PSU-E OC WH PCC	-	-	-
910505105013	DN510B 20S/840 PSU-E C BK	-	-	-
910505105015	DN510B 20S/840 PSU-E C WH PCC	-	-	-
910505105011	DN510B 20S/840 PSU-E C WH	-	-	-
910505105018	DN510B 30S/840 PSU-E C WH	-	-	-
910505105008	DN500B 20S/840 PSU-E C WH PCC	-	-	-
910505105009	DN500B 20S/840 PSU-E WR WH PCO	-	-	-
910505105012	DN510B 20S/840 PSU-E C GR	-	-	-

Light Technical (1/2)

Order Code	Full Product Name	Beam angle of light source	Correlated Color Temperature (Nom)	Color rendering index (CRI)	Luminous Efficacy (rated) (Nom)
910505105007	DN500B 20S/840 PSU-E OC WH	-	4000 K	80	149 lm/W
910505105010	DN500B 20S/840 PSU-E OC WH PCC	-	4000 K	80	146 lm/W
912500100526	DN471B LED20S/830 PSU-E C WH P	- degree(s)	3000 K	>80	137 lm/W
910505105005	DN500B 20S/840 PSU-E C GR	-	4000 K	80	157 lm/W
912500101305	DN470B LED30S/830 PSU-E C WH P	- degree(s)	3000 K	>80	137 lm/W
910505105016	DN510B 20S/840 PSU-E WR WH PCO	-	4000 K	80	146 lm/W
910505105003	DN500B 20S/830 PSU-E C WH	-	3000 K	80	146 lm/W
910505105004	DN500B 20S/840 PSU-E C WH	-	4000 K	80	157 lm/W
912500100543	DN472B LED20S/840 PSU-E C WH PCO P	- degree(s)	4000 K	>80	125 lm/W
910505105014	DN510B 20S/840 PSU-E OC WH	-	4000 K	80	149 lm/W

Order Code	Full Product Name	Beam angle of light source	Correlated Color Temperature (Nom)	Color rendering index (CRI)	Luminous Efficacy (rated) (Nom)
910505105019	DN510B 30S/840 PSU-E OC WH	-	4000 K	80	156 lm/W
910505105006	DN500B 20S/840 PSU-E C BK	-	4000 K	80	157 lm/W
910505105017	DN510B 20S/840 PSU-E OC WH PCC	-	4000 K	80	146 lm/W
910505105013	DN510B 20S/840 PSU-E C BK	-	4000 K	80	157 lm/W
910505105015	DN510B 20S/840 PSU-E C WH PCC	-	4000 K	80	149 lm/W
910505105011	DN510B 20S/840 PSU-E C WH	-	4000 K	80	157 lm/W
910505105018	DN510B 30S/840 PSU-E C WH	-	4000 K	80	161 lm/W
910505105008	DN500B 20S/840 PSU-E C WH PCC	-	4000 K	80	149 lm/W
910505105009	DN500B 20S/840 PSU-E WR WH PCO	-	4000 K	80	138 lm/W
910505105012	DN510B 20S/840 PSU-E C GR	-	4000 K	80	157 lm/W

Light Technical (2/2)

Order Code	Full Product Name	Luminous Flux	Number of light sources	Optic type
910505105007	DN500B 20S/840 PSU-E OC WH	2,000 lm	1	High-gloss mirror
910505105010	DN500B 20S/840 PSU-E OC WH PCC	1,950 lm	1	High-gloss mirror
912500100526	DN471B LED20S/830 PSU-E C WH P	1,800 lm	1	-
910505105005	DN500B 20S/840 PSU-E C GR	2,100 lm	1	High-gloss mirror
912500101305	DN470B LED30S/830 PSU-E C WH P	2,900 lm	-	-
910505105016	DN510B 20S/840 PSU-E WR WH PCO	1,950 lm	1	High-gloss mirror

Order Code	Full Product Name	Luminous Flux	Number of light sources	Optic type
910505105003	DN500B 20S/830 PSU-E C WH	1,950 lm	1	High-gloss mirror
910505105004	DN500B 20S/840 PSU-E C WH	2,100 lm	1	High-gloss mirror
912500100543	DN472B LED20S/840 PSU-E C WH PCO P	1,650 lm	1	-
910505105014	DN510B 20S/840 PSU-E OC WH	2,000 lm	1	High-gloss mirror
910505105019	DN510B 30S/840 PSU-E OC WH	3,000 lm	1	High-gloss mirror
910505105006	DN500B 20S/840 PSU-E C BK	2,100 lm	1	High-gloss mirror

Order Code	Full Product Name	Luminous Flux	Number of light		Optic type
			sources		
910505105017	DN510B 20S/840 PSU-E OC WH PCC	1,950 lm	1		High-gloss mirror
910505105013	DN510B 20S/840 PSU-E C BK	2,100 lm	1		High-gloss mirror
910505105015	DN510B 20S/840 PSU-E C WH PCC	2,000 lm	1		High-gloss mirror
910505105011	DN510B 20S/840 PSU-E C WH	2,100 lm	1		High-gloss mirror

Order Code	Full Product Name	Luminous Flux	Number of light		Optic type
			sources		
910505105018	DN510B 30S/840 PSU-E C WH	3,100 lm	1		High-gloss mirror
910505105008	DN500B 20S/840 PSU-E C WH PCC	2,000 lm	1		High-gloss mirror
910505105009	DN500B 20S/840 PSU-E WR WH PCO	1,850 lm	1		High-gloss mirror
910505105012	DN510B 20S/840 PSU-E C GR	2,100 lm	1		High-gloss mirror

### Operating and Electrical

Order Code	Full Product Name	Input Voltage	Power		Suitable for random switching
			Consumption		
910505105007	DN500B 20S/840 PSU-E OC WH	220 to 240 V	13.5 W		No
910505105010	DN500B 20S/840 PSU-E OC WH PCC	220 to 240 V	13.5 W		No
912500100526	DN471B LED20S/830 PSU-E C WH P	220-240 V	13.3 W		Yes
910505105005	DN500B 20S/840 PSU-E C GR	220 to 240 V	13.5 W		No
912500101305	DN470B LED30S/830 PSU-E C WH P	220-240 V	20.9 W		Yes
910505105016	DN510B 20S/840 PSU-E WR WH PCO	220 to 240 V	13.5 W		No
910505105003	DN500B 20S/830 PSU-E C WH	220 to 240 V	13.5 W		No
910505105004	DN500B 20S/840 PSU-E C WH	220 to 240 V	13.5 W		No
912500100543	DN472B LED20S/840 PSU-E C WH PCO P	220-240 V	13.3 W		Yes
910505105014	DN510B 20S/840 PSU-E OC WH	220 to 240 V	13.5 W		No

Order Code	Full Product Name	Input Voltage	Power		Suitable for random switching
			Consumption		
910505105019	DN510B 30S/840 PSU-E OC WH	220 to 240 V	19.1 W		No
910505105006	DN500B 20S/840 PSU-E C BK	220 to 240 V	13.5 W		No
910505105017	DN510B 20S/840 PSU-E OC WH PCC	220 to 240 V	13.5 W		No
910505105013	DN510B 20S/840 PSU-E C BK	220 to 240 V	13.5 W		No
910505105015	DN510B 20S/840 PSU-E C WH PCC	220 to 240 V	13.5 W		No
910505105011	DN510B 20S/840 PSU-E C WH	220 to 240 V	13.5 W		No
910505105018	DN510B 30S/840 PSU-E C WH	220 to 240 V	19.1 W		No
910505105008	DN500B 20S/840 PSU-E C WH PCC	220 to 240 V	13.5 W		No
910505105009	DN500B 20S/840 PSU-E WR WH PCO	220 to 240 V	13.5 W		No
910505105012	DN510B 20S/840 PSU-E C GR	220 to 240 V	13.5 W		No

### Controls and Dimming

Order Code	Full Product Name	Maximum dim level
910505105007	DN500B 20S/840 PSU-E OC WH	-
910505105010	DN500B 20S/840 PSU-E OC WH PCC	-
912500100526	DN471B LED20S/830 PSU-E C WH P	Not applicable
910505105005	DN500B 20S/840 PSU-E C GR	-
912500101305	DN470B LED30S/830 PSU-E C WH P	Not applicable
910505105016	DN510B 20S/840 PSU-E WR WH PCO	-
910505105003	DN500B 20S/830 PSU-E C WH	-
910505105004	DN500B 20S/840 PSU-E C WH	-
912500100543	DN472B LED20S/840 PSU-E C WH PCO P	Not applicable
910505105014	DN510B 20S/840 PSU-E OC WH	-

Order Code	Full Product Name	Maximum dim level
910505105019	DN510B 30S/840 PSU-E OC WH	-
910505105006	DN500B 20S/840 PSU-E C BK	-
910505105017	DN510B 20S/840 PSU-E OC WH PCC	-
910505105013	DN510B 20S/840 PSU-E C BK	-
910505105015	DN510B 20S/840 PSU-E C WH PCC	-
910505105011	DN510B 20S/840 PSU-E C WH	-
910505105018	DN510B 30S/840 PSU-E C WH	-
910505105008	DN500B 20S/840 PSU-E C WH PCC	-
910505105009	DN500B 20S/840 PSU-E WR WH PCO	-
910505105012	DN510B 20S/840 PSU-E C GR	-

### Mechanical and Housing

Order Code	Full Product Name	Housing Color	Ingress protection code
910505105007	DN500B 20S/840 PSU-E OC WH	Gray	IP20
910505105010	DN500B 20S/840 PSU-E OC WH PCC	Gray	IP20/54
912500100526	DN471B LED20S/830 PSU-E C WH P	White	IP20
910505105005	DN500B 20S/840 PSU-E C GR	Gray	IP20
912500101305	DN470B LED30S/830 PSU-E C WH P	White	IP20
910505105016	DN510B 20S/840 PSU-E WR WH PCO	Gray	IP20/54
910505105003	DN500B 20S/830 PSU-E C WH	Gray	IP20
910505105004	DN500B 20S/840 PSU-E C WH	Gray	IP20
912500100543	DN472B LED20S/840 PSU-E C WH PCO P	White	IP20/54
910505105014	DN510B 20S/840 PSU-E OC WH	Gray	IP20

Order Code	Full Product Name	Housing Color	Ingress protection code
910505105019	DN510B 30S/840 PSU-E OC WH	Gray	IP20
910505105006	DN500B 20S/840 PSU-E C BK	Gray	IP20
910505105017	DN510B 20S/840 PSU-E OC WH PCC	Gray	IP20/54
910505105013	DN510B 20S/840 PSU-E C BK	Gray	IP20
910505105015	DN510B 20S/840 PSU-E C WH PCC	Gray	IP20/54
910505105011	DN510B 20S/840 PSU-E C WH	Gray	IP20
910505105018	DN510B 30S/840 PSU-E C WH	Gray	IP20
910505105008	DN500B 20S/840 PSU-E C WH PCC	Gray	IP20/54
910505105009	DN500B 20S/840 PSU-E WR WH PCO	Gray	IP20/54
910505105012	DN510B 20S/840 PSU-E C GR	Gray	IP20

### Emergency Operation

Order Code	Full Product Name	Central Emergency
910505105007	DN500B 20S/840 PSU-E OC WH	-
910505105010	DN500B 20S/840 PSU-E OC WH PCC	-
912500100526	DN471B LED20S/830 PSU-E C WH P	No
910505105005	DN500B 20S/840 PSU-E C GR	-
912500101305	DN470B LED30S/830 PSU-E C WH P	No
910505105016	DN510B 20S/840 PSU-E WR WH PCO	-
910505105003	DN500B 20S/830 PSU-E C WH	-
910505105004	DN500B 20S/840 PSU-E C WH	-
912500100543	DN472B LED20S/840 PSU-E C WH PCO P	No
910505105014	DN510B 20S/840 PSU-E OC WH	-

Order Code	Full Product Name	Central Emergency
910505105019	DN510B 30S/840 PSU-E OC WH	-
910505105006	DN500B 20S/840 PSU-E C BK	-
910505105017	DN510B 20S/840 PSU-E OC WH PCC	-
910505105013	DN510B 20S/840 PSU-E C BK	-
910505105015	DN510B 20S/840 PSU-E C WH PCC	-
910505105011	DN510B 20S/840 PSU-E C WH	-
910505105018	DN510B 30S/840 PSU-E C WH	-
910505105008	DN500B 20S/840 PSU-E C WH PCC	-
910505105009	DN500B 20S/840 PSU-E WR WH PCO	-
910505105012	DN510B 20S/840 PSU-E C GR	-

### Approval and Application

Order Code	Full Product Name	Ambient temperature range	ENEC mark	Glow-wire test
910505105007	DN500B 20S/840 PSU-E OC WH	+10 to +35 °C	ENEC mark	Temperature 650 °C, duration 30 s
910505105010	DN500B 20S/840 PSU-E OC WH PCC	+10 to +35 °C	ENEC mark	Temperature 650 °C, duration 30 s
912500100526	DN471B LED20S/830 PSU-E C WH P	+10 to +40 °C	ENEC mark	Temperature 750 °C, duration 30 s
910505105005	DN500B 20S/840 PSU-E C GR	+10 to +35 °C	ENEC mark	Temperature 650 °C, duration 30 s
912500101305	DN470B LED30S/830 PSU-E C WH P	+10 to +40 °C	-	Temperature 750 °C, duration 30 s
910505105016	DN510B 20S/840 PSU-E WR WH PCO	+10 to +35 °C	ENEC mark	Temperature 650 °C, duration 30 s
910505105003	DN500B 20S/830 PSU-E C WH	+10 to +35 °C	ENEC mark	Temperature 650 °C, duration 30 s

Order Code	Full Product Name	Ambient temperature range	ENEC mark	Glow-wire test
910505105004	DN500B 20S/840 PSU-E C WH	+10 to +35 °C	ENEC mark	Temperature 650 °C, duration 30 s
912500100543	DN472B LED20S/840 PSU-E C WH PCO P	-15 to +40 °C	ENEC mark	Temperature 750 °C, duration 30 s
910505105014	DN510B 20S/840 PSU-E OC WH	+10 to +35 °C	ENEC mark	Temperature 650 °C, duration 30 s
910505105019	DN510B 30S/840 PSU-E OC WH	+10 to +35 °C	ENEC mark	Temperature 650 °C, duration 30 s
910505105006	DN500B 20S/840 PSU-E C BK	+10 to +35 °C	ENEC mark	Temperature 650 °C, duration 30 s
910505105017	DN510B 20S/840 PSU-E OC WH PCC	+10 to +35 °C	ENEC mark	Temperature 650 °C, duration 30 s
910505105013	DN510B 20S/840 PSU-E C BK	+10 to +35 °C	ENEC mark	Temperature 650 °C, duration 30 s
910505105015	DN510B 20S/840 PSU-E C WH PCC	+10 to +35 °C	ENEC mark	Temperature 650 °C, duration 30 s

Order Code	Full Product Name	Ambient	ENEC	Glow-wire test
		temperature range		
910505105011	DN510B 20S/840 PSU-E C WH	+10 to +35 °C	ENEC mark	Temperature 650 °C, duration 30 s
910505105018	DN510B 30S/840 PSU-E C WH	+10 to +35 °C	ENEC mark	Temperature 650 °C, duration 30 s
910505105008	DN500B 20S/840 PSU-E C WH PCC	+10 to +35 °C	ENEC mark	Temperature 650 °C, duration 30 s

Order Code	Full Product Name	Ambient	ENEC	Glow-wire test
		temperature range		
910505105009	DN500B 20S/840 PSU-E WR WH PCO	+10 to +35 °C	ENEC mark	Temperature 650 °C, duration 30 s
910505105012	DN510B 20S/840 PSU-E C GR	+10 to +35 °C	ENEC mark	Temperature 650 °C, duration 30 s

**Initial Performance (IEC Compliant)**

Order Code	Full Product Name	Initial chromaticity
910505105007	DN500B 20S/840 PSU-E OC WH	(0.38, 0.38) SDCM <3
910505105010	DN500B 20S/840 PSU-E OC WH PCC	(0.38, 0.38) SDCM <3
912500100526	DN471B LED20S/830 PSU-E C WH P	(0.43, 0.40) SDCM<3
910505105005	DN500B 20S/840 PSU-E C GR	(0.38, 0.38) SDCM <3
912500101305	DN470B LED30S/830 PSU-E C WH P	(0.43, 0.40) SDCM<3
910505105016	DN510B 20S/840 PSU-E WR WH PCO	(0.38, 0.38) SDCM <3
910505105003	DN500B 20S/830 PSU-E C WH	(0.38, 0.38) SDCM <3
910505105004	DN500B 20S/840 PSU-E C WH	(0.38, 0.38) SDCM <3
912500100543	DN472B LED20S/840 PSU-E C WH PCO P	(0.38, 0.38) SDCM<3
910505105014	DN510B 20S/840 PSU-E OC WH	(0.38, 0.38) SDCM <3

Order Code	Full Product Name	Initial chromaticity
910505105019	DN510B 30S/840 PSU-E OC WH	(0.38, 0.38) SDCM <3
910505105006	DN500B 20S/840 PSU-E C BK	(0.38, 0.38) SDCM <3
910505105017	DN510B 20S/840 PSU-E OC WH PCC	(0.38, 0.38) SDCM <3
910505105013	DN510B 20S/840 PSU-E C BK	(0.38, 0.38) SDCM <3
910505105015	DN510B 20S/840 PSU-E C WH PCC	(0.38, 0.38) SDCM <3
910505105011	DN510B 20S/840 PSU-E C WH	(0.38, 0.38) SDCM <3
910505105018	DN510B 30S/840 PSU-E C WH	(0.38, 0.38) SDCM <3
910505105008	DN500B 20S/840 PSU-E C WH PCC	(0.38, 0.38) SDCM <3
910505105009	DN500B 20S/840 PSU-E WR WH PCO	(0.38, 0.38) SDCM <3
910505105012	DN510B 20S/840 PSU-E C GR	(0.38, 0.38) SDCM <3

**Over Time Performance (IEC Compliant)**

Order Code	Full Product Name	Driver failure rate at 5000 h
910505105007	DN500B 20S/840 PSU-E OC WH	10 %
910505105010	DN500B 20S/840 PSU-E OC WH PCC	10 %
912500100526	DN471B LED20S/830 PSU-E C WH P	1 %
910505105005	DN500B 20S/840 PSU-E C GR	10 %
912500101305	DN470B LED30S/830 PSU-E C WH P	1 %
910505105016	DN510B 20S/840 PSU-E WR WH PCO	10 %
910505105003	DN500B 20S/830 PSU-E C WH	10 %
910505105004	DN500B 20S/840 PSU-E C WH	10 %
912500100543	DN472B LED20S/840 PSU-E C WH PCO P	1 %
910505105014	DN510B 20S/840 PSU-E OC WH	10 %

Order Code	Full Product Name	Driver failure rate at 5000 h
910505105019	DN510B 30S/840 PSU-E OC WH	10 %
910505105006	DN500B 20S/840 PSU-E C BK	10 %
910505105017	DN510B 20S/840 PSU-E OC WH PCC	10 %
910505105013	DN510B 20S/840 PSU-E C BK	10 %
910505105015	DN510B 20S/840 PSU-E C WH PCC	10 %
910505105011	DN510B 20S/840 PSU-E C WH	10 %
910505105018	DN510B 30S/840 PSU-E C WH	10 %
910505105008	DN500B 20S/840 PSU-E C WH PCC	10 %
910505105009	DN500B 20S/840 PSU-E WR WH PCO	10 %
910505105012	DN510B 20S/840 PSU-E C GR	10 %

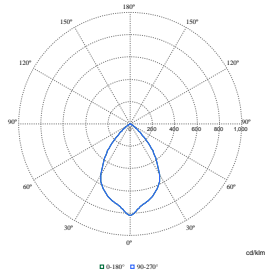
**Product Data**

Order Code	Full Product Name	Product family code
910505105007	DN500B 20S/840 PSU-E OC WH	DN500B
910505105010	DN500B 20S/840 PSU-E OC WH PCC	DN500B
912500100526	DN471B LED20S/830 PSU-E C WH P	DN471B
910505105005	DN500B 20S/840 PSU-E C GR	DN500B
912500101305	DN470B LED30S/830 PSU-E C WH P	DN470B
910505105016	DN510B 20S/840 PSU-E WR WH PCO	DN510B
910505105003	DN500B 20S/830 PSU-E C WH	DN500B
910505105004	DN500B 20S/840 PSU-E C WH	DN500B
912500100543	DN472B LED20S/840 PSU-E C WH PCO P	DN472B
910505105014	DN510B 20S/840 PSU-E OC WH	DN510B

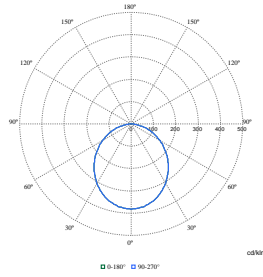
Order Code	Full Product Name	Product family code
910505105019	DN510B 30S/840 PSU-E OC WH	DN510B
910505105006	DN500B 20S/840 PSU-E C BK	DN500B
910505105017	DN510B 20S/840 PSU-E OC WH PCC	DN510B
910505105013	DN510B 20S/840 PSU-E C BK	DN510B
910505105015	DN510B 20S/840 PSU-E C WH PCC	DN510B
910505105011	DN510B 20S/840 PSU-E C WH	DN510B
910505105018	DN510B 30S/840 PSU-E C WH	DN510B
910505105008	DN500B 20S/840 PSU-E C WH PCC	DN500B
910505105009	DN500B 20S/840 PSU-E WR WH PCO	DN500B
910505105012	DN510B 20S/840 PSU-E C GR	DN510B



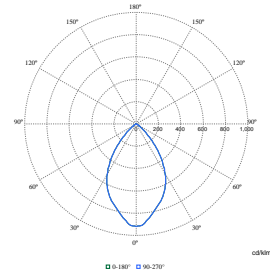
Polar Wide Diagrams



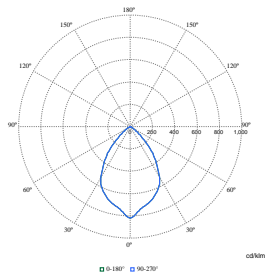
Polar Normal (separate) - 910505105015



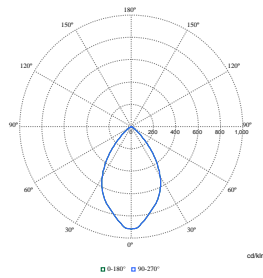
Polar Normal (separate) - 910505105016



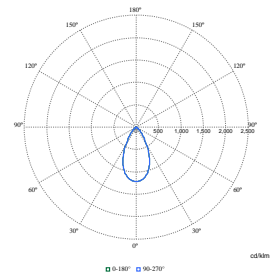
Polar Normal (separate) - 910505105008



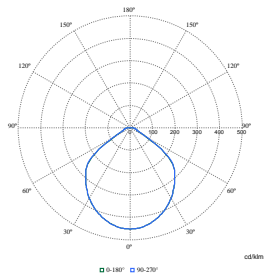
Polar Normal (separate) - 910505105012



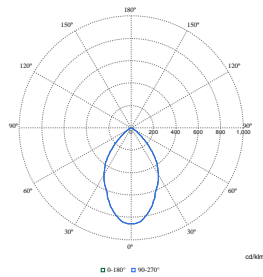
Polar Normal (separate) - 910505105006



Polar Normal (separate) - DN46BN - 912500100526



Polar Normal (separate) - DN46BN - 912500100543



Polar Normal (separate) - DN46BN - 912500101305

