



GreenSpace 2 downlight – high- efficiency sustainable LED solution

GreenSpace

Customers want to strike the ideal balance between their initial investment and the cost of the installation during its lifetime. GreenSpace is a cost-efficient and sustainable downlight that can be used to replace conventional CFL downlights in general lighting applications. It features the latest LED technology, which enables extremely low power consumption, while delivering consistent light output, stable colour performance and high colour rendering. The product's long lifetime makes it a true 'fit and forget' solution.

Benefits

- Office lighting norm-compliant, with stable colour performance and high colour rendering

Features

- Energy-efficient, durable LED technology
- High system efficacy: > 111 lm/W (mini, DN460B/DN461B); > 111 lm/W (compact, LED30S DN470B/DN471B), typically 114 lm/W (compact LED 20S DN470B/DN471B)
- Stable colour performance and high colour rendering
- Available with IP44 or emergency lighting options
- Available in UGR22 and UGR19 versions

Application

- Offices
- Retail
- Hotels and hospitals

Versions

GreenSpace Mini, office-compliant reflector, white rim



GreenSpace Mini, office-compliant reflector, protection cover clear, white rim



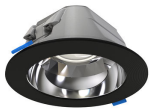
Greenspace EU gen 2-DN472B



GreenSpace Compact, office-compliant reflector, white rim



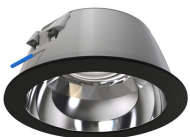
GreenSpace Mini, high-gloss reflector, black rim



GreenSpace Compact, office-compliant reflector, protection cover clear, white rim



GreenSpace Compact, high-gloss reflector, black rim



GreenSpace Compact, high-gloss reflector, protection cover clear, white rim

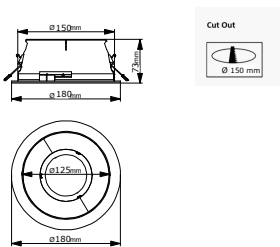
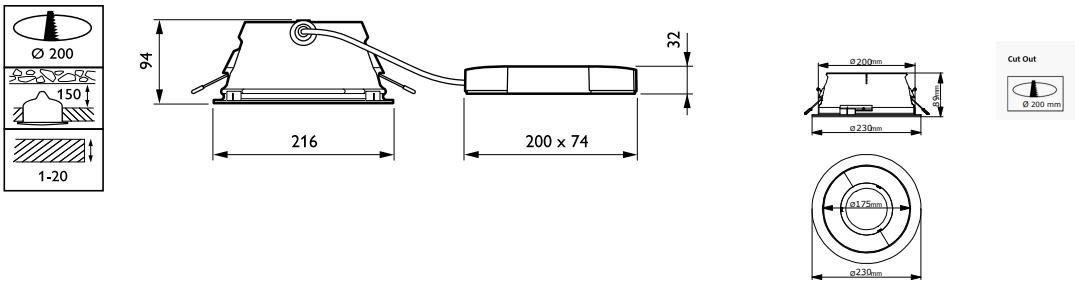


Versions

GreenSpace Compact, high-gloss
reflector, white rim



Dimensional drawing



Product details

Greenspace_EU_gen_2-DN473B-
DPP.TIF



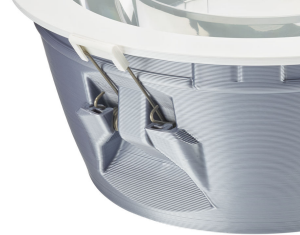
Greenspace_EU_gen_2-DN472B-
DPP.TIF



Product details



Greenspace_EU_gen_2-
DN462_463_472_473B-1DPP.TIF



Greenspace_EU_gen_2-
DN462_463_472_473B-3DPP.TIF



Greenspace_EU_gen_2-
DN462_463_472_473B-2DPP.TIF

General Information

Driver included	Yes
Gear	-
Number of gear units	Unit

Operating and Electrical

Protection class IEC	Safety class II
Line Frequency	50 to 60 Hz

Mechanical and Housing

Optical cover type	-
Mech. impact protection code	IK02

Approval and Application

CE mark	Yes
ENEC mark	ENEC mark
Flammability mark	-

Initial Performance (IEC Compliant)

Luminous flux tolerance	+/-10%
-------------------------	--------

General Information

Order Code	Full Product Name	Lamp family code	Light source replaceable	Service Tag
910505105007	DN500B 20S/840 PSU-E OC WH	-	-	-
910505105010	DN500B 20S/840 PSU-E OC WH PCC	-	-	-
910505102087	DN471B LED20S/830 WIA-E C WH P	20S	No	Yes
910505102089	DN471B LED20S/840 WIA-E C WH P	20S	No	Yes
912500100074	DN473B LED20S/830 PSU-E C WH PCC P	LED20S	No	Yes
912500100071	DN472B LED20S/840 PSU-E C WH PCC P	LED20S	No	Yes
912500100522	DN470B LED20S/830 PSU-E C WH P	LED20S	No	Yes
910505104972	DN500B 11S/830 PSU-E C WH	-	-	-
910505105004	DN500B 20S/840 PSU-E C WH	-	-	-
910505105014	DN510B 20S/840 PSU-E OC WH	-	-	-
910505105019	DN510B 30S/840 PSU-E OC WH	-	-	-
910505105006	DN500B 20S/840 PSU-E C BK	-	-	-
910505105017	DN510B 20S/840 PSU-E OC WH PCC	-	-	-
910505105013	DN510B 20S/840 PSU-E C BK	-	-	-
910505105015	DN510B 20S/840 PSU-E C WH PCC	-	-	-
910505105011	DN510B 20S/840 PSU-E C WH	-	-	-

Light Technical (1/2)

Order Code	Full Product Name	Beam angle of light source	Correlated Colour Temperature (Nom)	Colour rendering index (CRI)	Luminous efficacy (rated) (nom.)
910505105007	DN500B 20S/840 PSU-E OC WH	-	4000 K	80	149 lm/W

Order Code	Full Product Name	Beam angle of light source	Correlated Colour Temperature (Nom)	Colour rendering index (CRI)	Luminous efficacy (rated) (nom.)
910505105010	DN500B 20S/840 PSU-E OC WH PCC	-	4000 K	80	146 lm/W

Order Code	Full Product Name	Beam angle of light source	Correlated Colour Temperature (Nom)	Colour rendering index (CRI)	Luminous efficacy (rated) (nom.)
910505102087	DN471B LED20S/830 WIA-E C WH P	- degree(s)	3000 K	>80	137 lm/W
910505102089	DN471B LED20S/840 WIA-E C WH P	- degree(s)	4000 K	>80	141 lm/W
912500100074	DN473B LED20S/830 PSU-E C WH PCC P	- degree(s)	3000 K	>80	130 lm/W
912500100071	DN472B LED20S/840 PSU-E C WH PCC P	- degree(s)	4000 K	>80	141 lm/W
912500100522	DN470B LED20S/830 PSU-E C WH P	- degree(s)	3000 K	>80	143 lm/W
910505104972	DN500B 11S/830 PSU-E C WH	-	3000 K	80	149 lm/W
910505105004	DN500B 20S/840 PSU-E C WH	-	4000 K	80	157 lm/W

Order Code	Full Product Name	Beam angle of light source	Correlated Colour Temperature (Nom)	Colour rendering index (CRI)	Luminous efficacy (rated) (nom.)
910505105014	DN510B 20S/840 PSU-E OC WH	-	4000 K	80	149 lm/W
910505105019	DN510B 30S/840 PSU-E OC WH	-	4000 K	80	156 lm/W
910505105006	DN500B 20S/840 PSU-E C BK	-	4000 K	80	157 lm/W
910505105017	DN510B 20S/840 PSU-E OC WH PCC	-	4000 K	80	146 lm/W
910505105013	DN510B 20S/840 PSU-E C BK	-	4000 K	80	157 lm/W
910505105015	DN510B 20S/840 PSU-E C WH PCC	-	4000 K	80	149 lm/W
910505105011	DN510B 20S/840 PSU-E C WH	-	4000 K	80	157 lm/W

Light Technical (2/2)

Order Code	Full Product Name	Luminous Flux	Number of light sources	Optic type	Upwards light output ratio
910505105007	DN500B 20S/840 PSU-E OC WH	2,000 lm	1	High-gloss mirror	-
910505105010	DN500B 20S/840 PSU-E OC WH PCC	1,950 lm	1	High-gloss mirror	-
910505102087	DN471B LED20S/830 WIA-E C WH P	1,800 lm	-	-	0
910505102089	DN471B LED20S/840 WIA-E C WH P	1,850 lm	-	-	0
912500100074	DN473B LED20S/830 PSU-E C WH PCC P	1,750 lm	1	-	-
912500100071	DN472B LED20S/840 PSU-E C WH PCC P	1,850 lm	1	-	-
912500100522	DN470B LED20S/830 PSU-E C WH P	1,900 lm	1	-	-

Order Code	Full Product Name	Luminous Flux	Number of light sources	Optic type	Upwards light output ratio
910505104972	DN500B 11S/830 PSU-E C WH	1,150 lm	1	High-gloss mirror	-
910505105004	DN500B 20S/840 PSU-E C WH	2,100 lm	1	High-gloss mirror	-
910505105014	DN510B 20S/840 PSU-E OC WH	2,000 lm	1	High-gloss mirror	-
910505105019	DN510B 30S/840 PSU-E OC WH	3,000 lm	1	High-gloss mirror	-
910505105006	DN500B 20S/840 PSU-E C BK	2,100 lm	1	High-gloss mirror	-
910505105017	DN510B 20S/840 PSU-E OC WH PCC	1,950 lm	1	High-gloss mirror	-

Order Code	Full Product Name	Luminous Flux	Number of light sources	Optic type	Upwards light output ratio
910505105013	DN510B 20S/840 PSU-E C BK	2,100 lm	1	High-gloss mirror	-
910505105015	DN510B 20S/840 PSU-E C WH PCC	2,000 lm	1	High-gloss mirror	-

Order Code	Full Product Name	Luminous Flux	Number of light sources	Optic type	Upwards light output ratio
910505105011	DN510B 20S/840 PSU-E C WH	2,100 lm	1	High-gloss mirror	-

Operating and Electrical

Order Code	Full Product Name	Input Voltage	Power Consumption	Suitable for random switching
910505105007	DN500B 20S/840 PSU-E OC WH	220 to 240 V	13.5 W	No
910505105010	DN500B 20S/840 PSU-E OC WH PCC	220 to 240 V	13.5 W	No
910505102087	DN471B LED20S/830 WIA-E C WH P	220-240 V	13.2 W	Yes
910505102089	DN471B LED20S/840 WIA-E C WH P	220-240 V	13.2 W	Yes
912500100074	DN473B LED20S/830 PSU-E C WH PCC P	220 to 240 V	13.3 W	Yes
912500100071	DN472B LED20S/840 PSU-E C WH PCC P	220 to 240 V	13.3 W	Yes
912500100522	DN470B LED20S/830 PSU-E C WH P	220-240 V	13.3 W	Yes
910505104972	DN500B 11S/830 PSU-E C WH	220 to 240 V	7.7 W	No

Order Code	Full Product Name	Input Voltage	Power Consumption	Suitable for random switching
910505105004	DN500B 20S/840 PSU-E C WH	220 to 240 V	13.5 W	No
910505105014	DN510B 20S/840 PSU-E OC WH	220 to 240 V	13.5 W	No
910505105019	DN510B 30S/840 PSU-E OC WH	220 to 240 V	19.1 W	No
910505105006	DN500B 20S/840 PSU-E C BK	220 to 240 V	13.5 W	No
910505105017	DN510B 20S/840 PSU-E OC WH PCC	220 to 240 V	13.5 W	No
910505105013	DN510B 20S/840 PSU-E C BK	220 to 240 V	13.5 W	No
910505105015	DN510B 20S/840 PSU-E C WH PCC	220 to 240 V	13.5 W	No
910505105011	DN510B 20S/840 PSU-E C WH	220 to 240 V	13.5 W	No

Controls and Dimming

Order Code	Full Product Name	Dimmable	Maximum dim level
910505105007	DN500B 20S/840 PSU-E OC WH	No	-
910505105010	DN500B 20S/840 PSU-E OC WH PCC	No	-
910505102087	DN471B LED20S/830 WIA-E C WH P	Yes	1%
910505102089	DN471B LED20S/840 WIA-E C WH P	Yes	1%
912500100074	DN473B LED20S/830 PSU-E C WH PCC P	No	Not applicable
912500100071	DN472B LED20S/840 PSU-E C WH PCC P	No	Not applicable
912500100522	DN470B LED20S/830 PSU-E C WH P	No	Not applicable
910505104972	DN500B 11S/830 PSU-E C WH	No	-

Order Code	Full Product Name	Dimmable	Maximum dim level
910505105004	DN500B 20S/840 PSU-E C WH	No	-
910505105014	DN510B 20S/840 PSU-E OC WH	No	-
910505105019	DN510B 30S/840 PSU-E OC WH	No	-
910505105006	DN500B 20S/840 PSU-E C BK	No	-
910505105017	DN510B 20S/840 PSU-E OC WH PCC	No	-
910505105013	DN510B 20S/840 PSU-E C BK	No	-
910505105015	DN510B 20S/840 PSU-E C WH PCC	No	-
910505105011	DN510B 20S/840 PSU-E C WH	No	-

Mechanical and Housing

Order Code	Full Product Name	Housing Colour	Ingress protection code
910505105007	DN500B 20S/840 PSU-E OC WH	Grey	IP20

Order Code	Full Product Name	Housing Colour	Ingress protection code
910505105010	DN500B 20S/840 PSU-E OC WH PCC	Grey	IP54/20

Order Code	Full Product Name	Housing Colour	Ingress protection code
910505102087	DN471B LED20S/830 WIA-E C WH P	White	IP20
910505102089	DN471B LED20S/840 WIA-E C WH P	White	IP20
912500100074	DN473B LED20S/830 PSU-E C WH PCC P	White	IP20/54
912500100071	DN472B LED20S/840 PSU-E C WH PCC P	White	IP20/54
912500100522	DN470B LED20S/830 PSU-E C WH P	White	IP20
910505104972	DN500B 11S/830 PSU-E C WH	Grey	IP20

Order Code	Full Product Name	Housing Colour	Ingress protection code
910505105004	DN500B 20S/840 PSU-E C WH	Grey	IP20
910505105014	DN510B 20S/840 PSU-E OC WH	Grey	IP20
910505105019	DN510B 30S/840 PSU-E OC WH	Grey	IP20
910505105006	DN500B 20S/840 PSU-E C BK	Grey	IP20
910505105017	DN510B 20S/840 PSU-E OC WH PCC	Grey	IP54/20
910505105013	DN510B 20S/840 PSU-E C BK	Grey	IP20
910505105015	DN510B 20S/840 PSU-E C WH PCC	Grey	IP54/20
910505105011	DN510B 20S/840 PSU-E C WH	Grey	IP20

Emergency Operation

Order Code	Full Product Name	Central Emergency
910505105007	DN500B 20S/840 PSU-E OC WH	-
910505105010	DN500B 20S/840 PSU-E OC WH PCC	-
910505102087	DN471B LED20S/830 WIA-E C WH P	No
910505102089	DN471B LED20S/840 WIA-E C WH P	No
912500100074	DN473B LED20S/830 PSU-E C WH PCC P	No
912500100071	DN472B LED20S/840 PSU-E C WH PCC P	No
912500100522	DN470B LED20S/830 PSU-E C WH P	No
910505104972	DN500B 11S/830 PSU-E C WH	-

Order Code	Full Product Name	Central Emergency
910505105004	DN500B 20S/840 PSU-E C WH	-
910505105014	DN510B 20S/840 PSU-E OC WH	-
910505105019	DN510B 30S/840 PSU-E OC WH	-
910505105006	DN500B 20S/840 PSU-E C BK	-
910505105017	DN510B 20S/840 PSU-E OC WH PCC	-
910505105013	DN510B 20S/840 PSU-E C BK	-
910505105015	DN510B 20S/840 PSU-E C WH PCC	-
910505105011	DN510B 20S/840 PSU-E C WH	-

Approval and Application

Order Code	Full Product Name	Ambient temperature range	Glow-wire test
910505105007	DN500B 20S/840 PSU-E OC WH	+10 to +35 °C	Temperature 650 °C, duration 30 s
910505105010	DN500B 20S/840 PSU-E OC WH PCC	+10 to +35 °C	Temperature 650 °C, duration 30 s
910505102087	DN471B LED20S/830 WIA-E C WH P	+10 to +40 °C	Temperature 750 °C, duration 30 s
910505102089	DN471B LED20S/840 WIA-E C WH P	+10 to +40 °C	Temperature 750 °C, duration 30 s
912500100074	DN473B LED20S/830 PSU-E C WH PCC P	-15 to +40 °C	Temperature 750 °C, duration 30 s
912500100071	DN472B LED20S/840 PSU-E C WH PCC P	-15 to +40 °C	Temperature 750 °C, duration 30 s
912500100522	DN470B LED20S/830 PSU-E C WH P	+10 to +40 °C	Temperature 750 °C, duration 30 s
910505104972	DN500B 11S/830 PSU-E C WH	+10 to +35 °C	Temperature 650 °C, duration 30 s

Order Code	Full Product Name	Ambient temperature range	Glow-wire test
910505105004	DN500B 20S/840 PSU-E C WH	+10 to +35 °C	Temperature 650 °C, duration 30 s
910505105014	DN510B 20S/840 PSU-E OC WH	+10 to +35 °C	Temperature 650 °C, duration 30 s
910505105019	DN510B 30S/840 PSU-E OC WH	+10 to +35 °C	Temperature 650 °C, duration 30 s
910505105006	DN500B 20S/840 PSU-E C BK	+10 to +35 °C	Temperature 650 °C, duration 30 s
910505105017	DN510B 20S/840 PSU-E OC WH PCC	+10 to +35 °C	Temperature 650 °C, duration 30 s
910505105013	DN510B 20S/840 PSU-E C BK	+10 to +35 °C	Temperature 650 °C, duration 30 s
910505105015	DN510B 20S/840 PSU-E C WH PCC	+10 to +35 °C	Temperature 650 °C, duration 30 s
910505105011	DN510B 20S/840 PSU-E C WH	+10 to +35 °C	Temperature 650 °C, duration 30 s

Initial Performance (IEC Compliant)

Order Code	Full Product Name	Initial chromaticity
910505105007	DN500B 20S/840 PSU-E OC WH	(0.38, 0.38) SDCM <3
910505105010	DN500B 20S/840 PSU-E OC WH PCC	(0.38, 0.38) SDCM <3
910505102087	DN471B LED20S/830 WIA-E C WH P	(0.43, 0.40) SDCM <3
910505102089	DN471B LED20S/840 WIA-E C WH P	(0.38, 0.38) SDCM <3

Order Code	Full Product Name	Initial chromaticity
912500100074	DN473B LED20S/830 PSU-E C WH PCC P	(0.44, 0.40) SDCM <3
912500100071	DN472B LED20S/840 PSU-E C WH PCC P	(0.38, 0.38) SDCM <3
912500100522	DN470B LED20S/830 PSU-E C WH P	(0.43, 0.40) SDCM <3
910505104972	DN500B 11S/830 PSU-E C WH	(0.38, 0.38) SDCM <3

Order Code	Full Product Name	Initial chromaticity
910505105004	DN500B 20S/840 PSU-E C WH	(0.38, 0.38) SDCM <3
910505105014	DN510B 20S/840 PSU-E OC WH	(0.38, 0.38) SDCM <3
910505105019	DN510B 30S/840 PSU-E OC WH	(0.38, 0.38) SDCM <3
910505105006	DN500B 20S/840 PSU-E C BK	(0.38, 0.38) SDCM <3

Order Code	Full Product Name	Initial chromaticity
910505105017	DN510B 20S/840 PSU-E OC WH PCC	(0.38, 0.38) SDCM <3
910505105013	DN510B 20S/840 PSU-E C BK	(0.38, 0.38) SDCM <3
910505105015	DN510B 20S/840 PSU-E C WH PCC	(0.38, 0.38) SDCM <3
910505105011	DN510B 20S/840 PSU-E C WH	(0.38, 0.38) SDCM <3

Over Time Performance (IEC Compliant)

Order Code	Full Product Name	Driver failure rate at 5,000 hours
910505105007	DN500B 20S/840 PSU-E OC WH	10 %
910505105010	DN500B 20S/840 PSU-E OC WH PCC	10 %
910505102087	DN471B LED20S/830 WIA-E C WH P	-
910505102089	DN471B LED20S/840 WIA-E C WH P	-
912500100074	DN473B LED20S/830 PSU-E C WH PCC P	1 %
912500100071	DN472B LED20S/840 PSU-E C WH PCC P	1 %
912500100522	DN470B LED20S/830 PSU-E C WH P	1 %
910505104972	DN500B 11S/830 PSU-E C WH	10 %

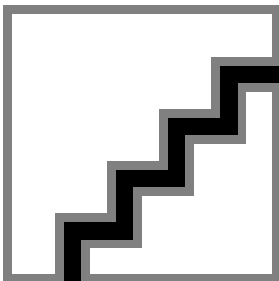
Order Code	Full Product Name	Driver failure rate at 5,000 hours
910505105004	DN500B 20S/840 PSU-E C WH	10 %
910505105014	DN510B 20S/840 PSU-E OC WH	10 %
910505105019	DN510B 30S/840 PSU-E OC WH	10 %
910505105006	DN500B 20S/840 PSU-E C BK	10 %
910505105017	DN510B 20S/840 PSU-E OC WH PCC	10 %
910505105013	DN510B 20S/840 PSU-E C BK	10 %
910505105015	DN510B 20S/840 PSU-E C WH PCC	10 %
910505105011	DN510B 20S/840 PSU-E C WH	10 %

Product Data

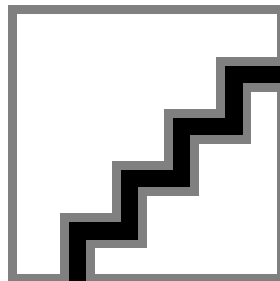
Order Code	Full Product Name	Product family code
910505105007	DN500B 20S/840 PSU-E OC WH	DN500B
910505105010	DN500B 20S/840 PSU-E OC WH PCC	DN500B
910505102087	DN471B LED20S/830 WIA-E C WH P	DN471B
910505102089	DN471B LED20S/840 WIA-E C WH P	DN471B
912500100074	DN473B LED20S/830 PSU-E C WH PCC P	DN473B
912500100071	DN472B LED20S/840 PSU-E C WH PCC P	DN472B
912500100522	DN470B LED20S/830 PSU-E C WH P	DN470B
910505104972	DN500B 11S/830 PSU-E C WH	-

Order Code	Full Product Name	Product family code
910505105004	DN500B 20S/840 PSU-E C WH	DN500B
910505105014	DN510B 20S/840 PSU-E OC WH	DN510B
910505105019	DN510B 30S/840 PSU-E OC WH	DN510B
910505105006	DN500B 20S/840 PSU-E C BK	DN500B
910505105017	DN510B 20S/840 PSU-E OC WH PCC	DN510B
910505105013	DN510B 20S/840 PSU-E C BK	DN510B
910505105015	DN510B 20S/840 PSU-E C WH PCC	DN510B
910505105011	DN510B 20S/840 PSU-E C WH	DN510B

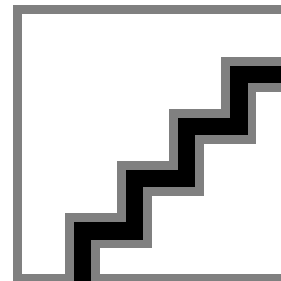
Polar Wide Diagrams



Polar Normal (separate) - 910505105013

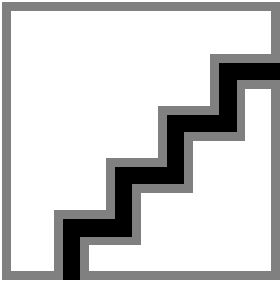


Polar Normal (separate) - 910505105004

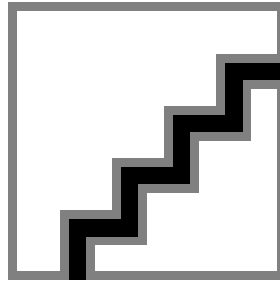


Polar Normal (separate) - 910505105017

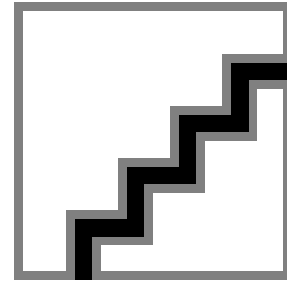
Polar Wide Diagrams



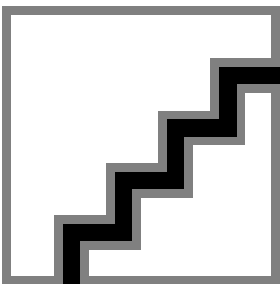
Polar Normal (separate) - 910505105014



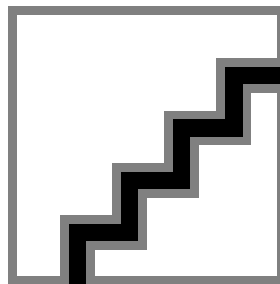
Polar Normal (separate) - 910505105007



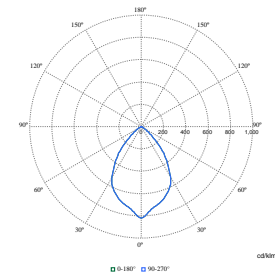
Polar Normal (separate) - 910505105019



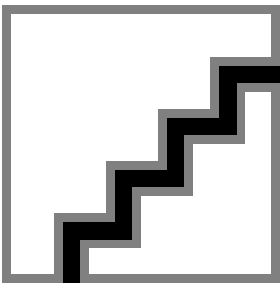
Polar Normal (separate) - 910505105010



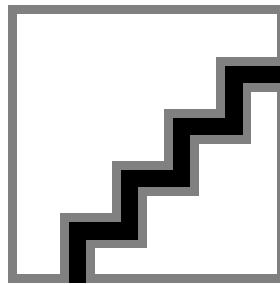
Polar Normal (separate) - 910505105011



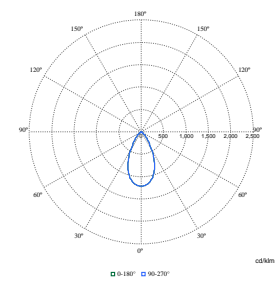
Polar Normal (separate) - 910505105015



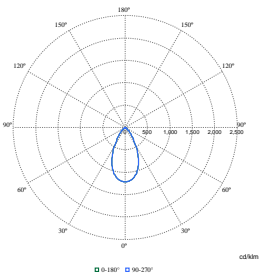
Polar Normal (separate) - 910505105006



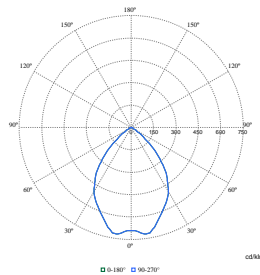
Polar Normal (separate) - 910505104972



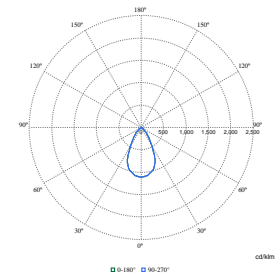
Polar Normal (separate) - DN460BN - 910505102087



Polar Normal (separate) - DN460BN - 910505102089

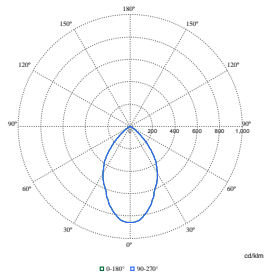


Polar Normal (separate) - DN460BN - 912500100071



Polar Normal (separate) - DN460BN - 912500100074

Polar Wide Diagrams



Polar Normal (separate) - DN460BN -
912500100522

