



# Philips GreenSpace – High-efficiency, sustainable LED solution with 75% bio- circular materials

## GreenSpace

GreenSpace is a perfect solution where customers want to strike the ideal balance between their initial investment and the cost of the installation during its lifetime while they are covering multiple applications. GreenSpace features the latest LED technology which enables extremely low power consumption. With its perfect fit you'll get the LED downlight that always fits and looks perfect at the same time. This perfect fit is available for cut out sizes from 150 mm to 280 mm which is the ideal solution for your renovation project. It saves the hassle, avoids time consuming and costly adaptor rings. GreenSpace is designed for Circular Economy with optimized performance, extended lifetime through upgradability and integration options, ease of customization, recycling and disassembly. Housing and rim are made with 75% recycled or mass-balanced bio-circular material, making it a conscious choice for those that want to contribute to a circular economy. GreenSpace can be connected to wireless systems to create a smart office lighting solution with optional integrated sensors as well. Its long lifetime with 100,000 hours at L100 (CLO), L90 (700lm/1400lm/on request 2000lm) makes it a true 'fit and forget' solution.

## Benefits

- Low return of investment years due to high efficiency and long lifetime
- Wide range of mounting options to fit different ceiling types
- The perfect fit for retrofit projects, possibility to create custom sizes
- Avoids time consuming and costly adaptor rings and get the downlight that always fits
- Office-compliant, with stable color performance and wide light distribution
- Clean & beautiful ceilings with integrated sensing options for daylight control and presence detection

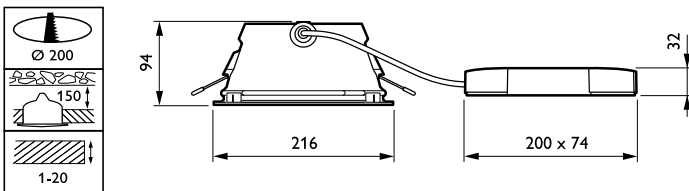
## Features

- Mini (DN500B) and compact (DN510B) sizes for recessed
- Surface mounted, track and pendant versions available
- Custom cut-out sizes between 150mm-280 mm, in total 28 sizes available
- High-gloss (CR) and White (WR) reflector types
- UGR19 version with anti-glare ring (OC reflector)
- Available in 700-5000 lumen to cover applications with higher ceilings
- Selection of rim colors: White, silver and black as standard, others on request
- IP54 version with a front cover and integrated sensors
- Emergency lighting option available
- Configurable with many driver types such as DALI and wireless with InterAct ready
- Fast installation due to variety of connections and cables
- Printed housing & rim parts with 75% recycled or mass balanced bio-circular material

## Application

- Offices
- Retail
- Hospitals and Care Centers
- Municipal Buildings
- Education
- Healthcare

## Dimensional drawing



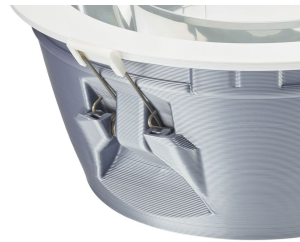
Product details



Greenspace\_EU\_gen\_2-DN472B-DPP.TIF



Greenspace\_EU\_gen\_2-DN462\_463\_472\_473B-1DPP.TIF



Greenspace\_EU\_gen\_2-DN462\_463\_472\_473B-3DPP.TIF



Greenspace\_EU\_gen\_2-DN462\_463\_472\_473B-2DPP.TIF

General Information	
Driver included	Yes
Gear	-
Light source replaceable	No
Number of gear units	1 unit
Service tag	Yes
Light Technical	
Beam angle of light source	- degree(s)
Color rendering index (CRI)	>80
Optic type	-
Operating and Electrical	
Protection class IEC	Safety class II
Line Frequency	50 to 60 Hz
Suitable for random switching	Yes
Controls and Dimming	
Dimmable	No
Maximum dim level	Not applicable
Mechanical and Housing	
Housing Color	White
Mech. impact protection code	IK02
Emergency Operation	
Central Emergency	No
Approval and Application	
CE mark	Yes
Flammability mark	-
Glow-wire test	Temperature 750 °C, duration 30 s
Initial Performance (IEC Compliant)	
Luminous flux tolerance	+/-10%
Over Time Performance (IEC Compliant)	
Driver failure rate at 5000 h	1 %

General Information

Order Code	Full Product Name	Lamp family code
912500100071	DN472B LED20S/840 PSU-E C WH PCC P	LED20S
912500101305	DN470B LED30S/830 PSU-E C WH P	-

Light Technical

Order Code	Full Product Name	Correlated Color Temperature (Nom)	Luminous Efficacy (rated) (Nom)	Luminous Flux	Number of light sources
		(K)	(lm/W)		
912500100071	DN472B LED20S/840	4000 K	141 lm/W	1,850 lm	1

Order Code	Full Product Name	Correlated Color Temperature (Nom)	Luminous Efficacy (rated) (Nom)	Luminous Flux	Number of light sources
		(K)	(lm/W)		
	PSU-E C WH PCC P				
912500101305	DN470B LED30S/830 PSU-E C WH P	3000 K	137 lm/W	2,900 lm	-

Operating and Electrical

Order Code	Full Product Name	Input Voltage	Power Consumption
912500100071	DN472B LED20S/840 PSU-E C WH PCC P	220 to 240 V	13.3 W

Order Code	Full Product Name	Input Voltage	Power Consumption
912500101305	DN470B LED30S/830 PSU-E C WH P	220-240 V	20.9 W

## Mechanical and Housing

Order Code	Full Product Name	Ingress protection code
912500100071	DN472B LED20S/840 PSU-E C WH PCC P	IP20/54

Order Code	Full Product Name	Ingress protection code
912500101305	DN470B LED30S/830 PSU-E C WH P	IP20

## Approval and Application

Order Code	Full Product Name	Ambient temperature range	ENEC mark
912500100071	DN472B LED20S/840 PSU-E C WH PCC P	-15 to +40 °C	ENEC mark

Order Code	Full Product Name	Ambient temperature range	ENEC mark
912500101305	DN470B LED30S/830 PSU-E C WH P	+10 to +40 °C	-

## Initial Performance (IEC Compliant)

Order Code	Full Product Name	Initial chromaticity
912500100071	DN472B LED20S/840 PSU-E C WH PCC P	(0.38, 0.38) SDCM<3

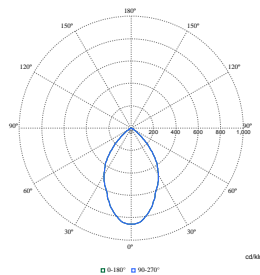
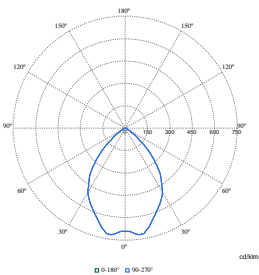
Order Code	Full Product Name	Initial chromaticity
912500101305	DN470B LED30S/830 PSU-E C WH P	(0.43, 0.40) SDCM<3

## Product Data

Order Code	Full Product Name	Product family code
912500100071	DN472B LED20S/840 PSU-E C WH PCC P	DN472B

Order Code	Full Product Name	Product family code
912500101305	DN470B LED30S/830 PSU-E C WH P	DN470B

## Polar Wide Diagrams



Polar Normal (separate) - DN460BN - 912500100071

Polar Normal (separate) - DN460BN - 912500101305

