



# GreenSpace – high-efficiency sustainable LED solution

## GreenSpace

Customers want to strike the ideal balance between their initial investment and the cost of the installation during its lifetime. GreenSpace is a cost-efficient and sustainable downlight that can be used to replace conventional CFL downlights in general lighting applications. It features the latest LED technology, which enables extremely low power consumption, while delivering consistent light output, stable color performance and high color rendering. The product's long lifetime makes it a true 'fit and forget' solution.

### Benefits

- High system efficacy: > 80 lm/W (mini, DN460B/DN461B); > 100 lm/W (compact, DN470B/DN471B)
- Up to 70% energy saving: total cost of ownership recovered in less than 2 years
- Office lighting norm-compliant, with stable color performance and high color rendering

### Features

- Energy-efficient, durable LED technology
- High system efficacy: > 80 lm/W (mini, DN460B/DN461B); > 100 lm/W (compact, DN470B/DN471B)
- Stable color performance and high color rendering
- Available with IP44 or emergency lighting
- Available in UGR22 and UGR19 versions

### Application

- Offices
- Retail
- Hotels and hospitals

## Versions

GreenSpace Mini, office-compliant reflector, white rim



GreenSpace Mini, office-compliant reflector, protection cover clear, white rim



Greenspace EU gen 2-DN473B



GreenSpace Mini, high-gloss reflector, grey rim



Greenspace EU gen 2-DN472B



GreenSpace Compact, white reflector, protection cover opal, white rim



GreenSpace Mini, high-gloss reflector, white rim



Greenspace Compact DN472B with Poycarbonate Cover Opal

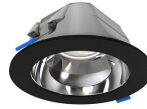


## Versions

GreenSpace Compact, office-compliant reflector, white rim



GreenSpace Mini, high-gloss reflector, black rim



GreenSpace Compact, office-compliant reflector, protection cover clear, white rim



GreenSpace Compact, high-gloss reflector, black rim



GreenSpace Compact, high-gloss reflector, protection cover clear, white rim



GreenSpace Mini, high-gloss reflector, protection cover clear, white rim



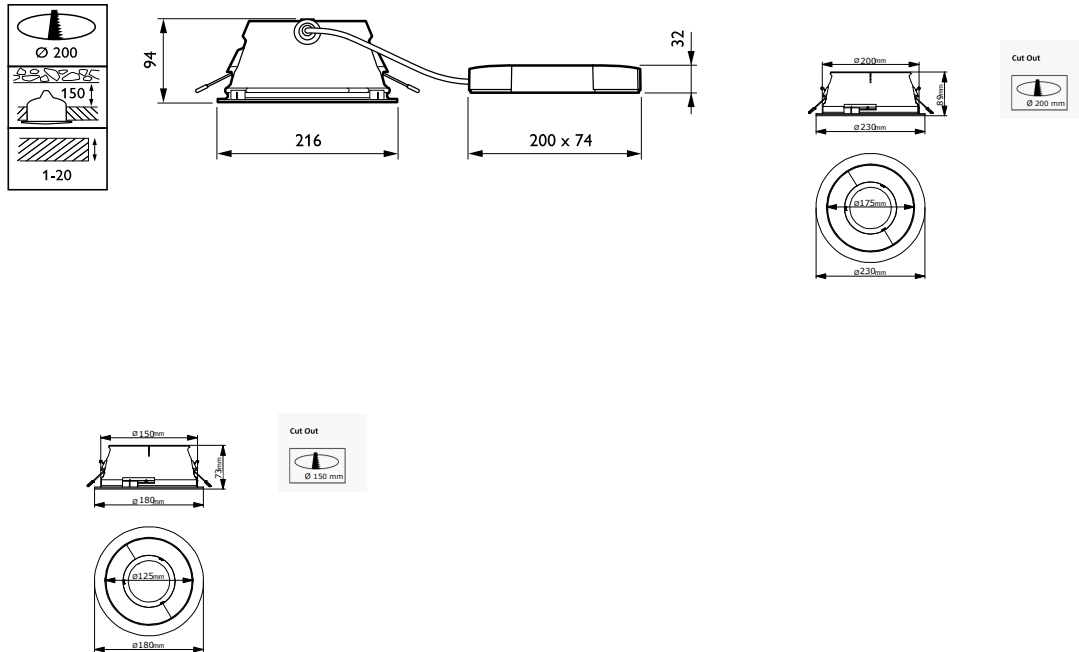
GreenSpace Mini, white reflector, protection cover opal, white rim



GreenSpace Compact, high-gloss reflector, grey rim



Dimensional drawing



General Information	
Driver included	Yes
Gear	-
Number of gear units	1 unit
Operating and Electrical	
Protection class IEC	Safety class II
Line Frequency	50 to 60 Hz
Controls and Dimming	
Dimmable	No
Mechanical and Housing	
Mech. impact protection code	IK02
Approval and Application	
CE mark	Yes
Flammability mark	-
Initial Performance (IEC Compliant)	
Luminous flux tolerance	+/-10%

General Information

Order Code	Full Product Name	Lamp family code	Light source replaceable	Service tag
83897000	DN500B 20S/840 PSU-E OC WH	-	-	-
83900700	DN500B 20S/840 PSU-E OC WH PCC	-	-	-
79331900	DN471B LED20S/830 PSU-E C WH P	LED20S	No	Yes
83895600	DN500B 20S/840 PSU-E C GR	-	-	-
94575600	DN470B LED30S/830 PSU-E C WH P	-	No	Yes
83906900	DN510B 20S/840 PSU-E WR WH PCO	-	-	-
83893200	DN500B 20S/830 PSU-E C WH	-	-	-
83894900	DN500B 20S/840 PSU-E C WH	-	-	-
79348700	DN472B LED20S/840 PSU-E C WH PCO P	LED20S	No	Yes
83904500	DN510B 20S/840 PSU-E OC WH	-	-	-
83909000	DN510B 30S/840 PSU-E OC WH	-	-	-
83896300	DN500B 20S/840 PSU-E C BK	-	-	-
83907600	DN510B 20S/840 PSU-E OC WH PCC	-	-	-
83903800	DN510B 20S/840 PSU-E C BK	-	-	-
83905200	DN510B 20S/840 PSU-E C WH PCC	-	-	-
83901400	DN510B 20S/840 PSU-E C WH	-	-	-
83908300	DN510B 30S/840 PSU-E C WH	-	-	-
83898700	DN500B 20S/840 PSU-E C WH PCC	-	-	-
83899400	DN500B 20S/840 PSU-E WR WH PCO	-	-	-
83902100	DN510B 20S/840 PSU-E C GR	-	-	-

Light Technical (1/2)

Order Code	Full Product Name	Beam angle of light source	Correlated Color Temperature (Nom)	Color rendering index (CRI)	Luminous Efficacy (rated) (Nom)
83897000	DN500B 20S/840 PSU-E OC WH	-	4000 K	80	149 lm/W
83900700	DN500B 20S/840 PSU-E OC WH PCC	-	4000 K	80	146 lm/W
79331900	DN471B LED20S/830 PSU-E C WH P	- degree(s)	3000 K	>80	137 lm/W
83895600	DN500B 20S/840 PSU-E C GR	-	4000 K	80	157 lm/W
94575600	DN470B LED30S/830 PSU-E C WH P	- degree(s)	3000 K	>80	137 lm/W
83906900	DN510B 20S/840 PSU-E WR WH PCO	-	4000 K	80	146 lm/W
83893200	DN500B 20S/830 PSU-E C WH	-	3000 K	80	146 lm/W
83894900	DN500B 20S/840 PSU-E C WH	-	4000 K	80	157 lm/W
79348700	DN472B LED20S/840	- degree(s)	4000 K	>80	125 lm/W

Order Code	Full Product Name	Beam angle of light source	Correlated Color Temperature (Nom)	Color rendering index (CRI)	Luminous Efficacy (rated) (Nom)
	PSU-E C WH PCO P				
83904500	DN510B 20S/840 PSU-E OC WH	-	4000 K	80	149 lm/W
83909000	DN510B 30S/840 PSU-E OC WH	-	4000 K	80	156 lm/W
83896300	DN500B 20S/840 PSU-E C BK	-	4000 K	80	157 lm/W
83907600	DN510B 20S/840 PSU-E OC WH PCC	-	4000 K	80	146 lm/W
83903800	DN510B 20S/840 PSU-E C BK	-	4000 K	80	157 lm/W
83905200	DN510B 20S/840 PSU-E C WH PCC	-	4000 K	80	149 lm/W
83901400	DN510B 20S/840 PSU-E C WH	-	4000 K	80	157 lm/W
83908300	DN510B 30S/840 PSU-E C WH	-	4000 K	80	161 lm/W
83898700	DN500B 20S/840 PSU-E C WH PCC	-	4000 K	80	149 lm/W
83899400	DN500B 20S/840 PSU-E WR WH PCO	-	4000 K	80	138 lm/W
83902100	DN510B 20S/840 PSU-E C GR	-	4000 K	80	157 lm/W

Light Technical (2/2)

Order Code	Full Product Name	Luminous Flux	Number of light sources	Optic type
83897000	DN500B 20S/840 PSU-E OC WH	2,000 lm	1	High-gloss mirror
83900700	DN500B 20S/840 PSU-E OC WH PCC	1,950 lm	1	High-gloss mirror
79331900	DN471B LED20S/830 PSU-E C WH P	1,800 lm	1	-
83895600	DN500B 20S/840 PSU-E C GR	2,100 lm	1	High-gloss mirror
94575600	DN470B LED30S/830 PSU-E C WH P	2,900 lm	-	-
83906900	DN510B 20S/840 PSU-E WR WH PCO	1,950 lm	1	High-gloss mirror
83893200	DN500B 20S/830 PSU-E C WH	1,950 lm	1	High-gloss mirror

Order Code	Full Product Name	Luminous Flux	Number of light sources	Optic type
83894900	DN500B 20S/840 PSU-E C WH	2,100 lm	1	High-gloss mirror
79348700	DN472B LED20S/840 PSU-E C WH PCO P	1,650 lm	1	-
83904500	DN510B 20S/840 PSU-E OC WH	2,000 lm	1	High-gloss mirror
83909000	DN510B 30S/840 PSU-E OC WH	3,000 lm	1	High-gloss mirror
83896300	DN500B 20S/840 PSU-E C BK	2,100 lm	1	High-gloss mirror
83907600	DN510B 20S/840 PSU-E OC WH PCC	1,950 lm	1	High-gloss mirror
83903800	DN510B 20S/840 PSU-E C BK	2,100 lm	1	High-gloss mirror

Order Code	Full Product Name	Luminous Flux	Number of light	
			sources	Optic type
83905200	DN510B 20S/840 PSU-E C WH PCC	2,000 lm	1	High-gloss mirror
83901400	DN510B 20S/840 PSU-E C WH	2,100 lm	1	High-gloss mirror
83908300	DN510B 30S/840 PSU-E C WH	3,100 lm	1	High-gloss mirror

Order Code	Full Product Name	Luminous Flux	Number of light	
			sources	Optic type
83898700	DN500B 20S/840 PSU-E C WH PCC	2,000 lm	1	High-gloss mirror
83899400	DN500B 20S/840 PSU-E WR WH PCO	1,850 lm	1	High-gloss mirror
83902100	DN510B 20S/840 PSU-E C GR	2,100 lm	1	High-gloss mirror

### Operating and Electrical

Order Code	Full Product Name	Power		Suitable for random switching
		Input Voltage	Consumption	
83897000	DN500B 20S/840 PSU-E OC WH	220 to 240 V	13.5 W	No
83900700	DN500B 20S/840 PSU-E OC WH PCC	220 to 240 V	13.5 W	No
79331900	DN471B LED20S/830 PSU-E C WH P	220-240 V	13.3 W	Yes
83895600	DN500B 20S/840 PSU-E C GR	220 to 240 V	13.5 W	No
94575600	DN470B LED30S/830 PSU-E C WH P	220-240 V	20.9 W	Yes
83906900	DN510B 20S/840 PSU-E WR WH PCO	220 to 240 V	13.5 W	No
83893200	DN500B 20S/830 PSU-E C WH	220 to 240 V	13.5 W	No
83894900	DN500B 20S/840 PSU-E C WH	220 to 240 V	13.5 W	No
79348700	DN472B LED20S/840 PSU-E C WH PCO P	220-240 V	13.3 W	Yes
83904500	DN510B 20S/840 PSU-E OC WH	220 to 240 V	13.5 W	No

Order Code	Full Product Name	Power		Suitable for random switching
		Input Voltage	Consumption	
83909000	DN510B 30S/840 PSU-E OC WH	220 to 240 V	19.1 W	No
83896300	DN500B 20S/840 PSU-E C BK	220 to 240 V	13.5 W	No
83907600	DN510B 20S/840 PSU-E OC WH PCC	220 to 240 V	13.5 W	No
83903800	DN510B 20S/840 PSU-E C BK	220 to 240 V	13.5 W	No
83905200	DN510B 20S/840 PSU-E C WH PCC	220 to 240 V	13.5 W	No
83901400	DN510B 20S/840 PSU-E C WH	220 to 240 V	13.5 W	No
83908300	DN510B 30S/840 PSU-E C WH	220 to 240 V	19.1 W	No
83898700	DN500B 20S/840 PSU-E C WH PCC	220 to 240 V	13.5 W	No
83899400	DN500B 20S/840 PSU-E WR WH PCO	220 to 240 V	13.5 W	No
83902100	DN510B 20S/840 PSU-E C GR	220 to 240 V	13.5 W	No

### Controls and Dimming

Order Code	Full Product Name	Maximum dim level
83897000	DN500B 20S/840 PSU-E OC WH	-
83900700	DN500B 20S/840 PSU-E OC WH PCC	-
79331900	DN471B LED20S/830 PSU-E C WH P	Not applicable
83895600	DN500B 20S/840 PSU-E C GR	-
94575600	DN470B LED30S/830 PSU-E C WH P	Not applicable
83906900	DN510B 20S/840 PSU-E WR WH PCO	-
83893200	DN500B 20S/830 PSU-E C WH	-
83894900	DN500B 20S/840 PSU-E C WH	-
79348700	DN472B LED20S/840 PSU-E C WH PCO P	Not applicable
83904500	DN510B 20S/840 PSU-E OC WH	-

Order Code	Full Product Name	Maximum dim level
83909000	DN510B 30S/840 PSU-E OC WH	-
83896300	DN500B 20S/840 PSU-E C BK	-
83907600	DN510B 20S/840 PSU-E OC WH PCC	-
83903800	DN510B 20S/840 PSU-E C BK	-
83905200	DN510B 20S/840 PSU-E C WH PCC	-
83901400	DN510B 20S/840 PSU-E C WH	-
83908300	DN510B 30S/840 PSU-E C WH	-
83898700	DN500B 20S/840 PSU-E C WH PCC	-
83899400	DN500B 20S/840 PSU-E WR WH PCO	-
83902100	DN510B 20S/840 PSU-E C GR	-

### Mechanical and Housing

Order Code	Full Product Name	Housing Color	Ingress protection code
83897000	DN500B 20S/840 PSU-E OC WH	Gray	IP20
83900700	DN500B 20S/840 PSU-E OC WH PCC	Gray	IP20/54
79331900	DN471B LED20S/830 PSU-E C WH P	White	IP20
83895600	DN500B 20S/840 PSU-E C GR	Gray	IP20
94575600	DN470B LED30S/830 PSU-E C WH P	White	IP20
83906900	DN510B 20S/840 PSU-E WR WH PCO	Gray	IP20/54
83893200	DN500B 20S/830 PSU-E C WH	Gray	IP20
83894900	DN500B 20S/840 PSU-E C WH	Gray	IP20
79348700	DN472B LED20S/840 PSU-E C WH PCO P	White	IP20/54
83904500	DN510B 20S/840 PSU-E OC WH	Gray	IP20

Order Code	Full Product Name	Housing Color	Ingress protection code
83909000	DN510B 30S/840 PSU-E OC WH	Gray	IP20
83896300	DN500B 20S/840 PSU-E C BK	Gray	IP20
83907600	DN510B 20S/840 PSU-E OC WH PCC	Gray	IP20/54
83903800	DN510B 20S/840 PSU-E C BK	Gray	IP20
83905200	DN510B 20S/840 PSU-E C WH PCC	Gray	IP20/54
83901400	DN510B 20S/840 PSU-E C WH	Gray	IP20
83908300	DN510B 30S/840 PSU-E C WH	Gray	IP20
83898700	DN500B 20S/840 PSU-E C WH PCC	Gray	IP20/54
83899400	DN500B 20S/840 PSU-E WR WH PCO	Gray	IP20/54
83902100	DN510B 20S/840 PSU-E C GR	Gray	IP20

**Emergency Operation**

Order Code	Full Product Name	Central Emergency
83897000	DN500B 20S/840 PSU-E OC WH	-
83900700	DN500B 20S/840 PSU-E OC WH PCC	-
79331900	DN471B LED20S/830 PSU-E C WH P	No
83895600	DN500B 20S/840 PSU-E C GR	-
94575600	DN470B LED30S/830 PSU-E C WH P	No
83906900	DN510B 20S/840 PSU-E WR WH PCO	-
83893200	DN500B 20S/830 PSU-E C WH	-
83894900	DN500B 20S/840 PSU-E C WH	-
79348700	DN472B LED20S/840 PSU-E C WH PCO P	No
83904500	DN510B 20S/840 PSU-E OC WH	-

Order Code	Full Product Name	Central Emergency
83909000	DN510B 30S/840 PSU-E OC WH	-
83896300	DN500B 20S/840 PSU-E C BK	-
83907600	DN510B 20S/840 PSU-E OC WH PCC	-
83903800	DN510B 20S/840 PSU-E C BK	-
83905200	DN510B 20S/840 PSU-E C WH PCC	-
83901400	DN510B 20S/840 PSU-E C WH	-
83908300	DN510B 30S/840 PSU-E C WH	-
83898700	DN500B 20S/840 PSU-E C WH PCC	-
83899400	DN500B 20S/840 PSU-E WR WH PCO	-
83902100	DN510B 20S/840 PSU-E C GR	-

**Approval and Application**

Order Code	Full Product Name	Ambient temperature range	ENEC mark	Glow-wire test
83897000	DN500B 20S/840 PSU-E OC WH	+10 to +35 °C	ENEC mark	Temperature 650 °C, duration 30 s
83900700	DN500B 20S/840 PSU-E OC WH PCC	+10 to +35 °C	ENEC mark	Temperature 650 °C, duration 30 s
79331900	DN471B LED20S/830 PSU-E C WH P	+10 to +40 °C	ENEC mark	Temperature 750 °C, duration 30 s
83895600	DN500B 20S/840 PSU-E C GR	+10 to +35 °C	ENEC mark	Temperature 650 °C, duration 30 s
94575600	DN470B LED30S/830 PSU-E C WH P	+10 to +40 °C	-	Temperature 750 °C, duration 30 s
83906900	DN510B 20S/840 PSU-E WR WH PCO	+10 to +35 °C	ENEC mark	Temperature 650 °C, duration 30 s
83893200	DN500B 20S/830 PSU-E C WH	+10 to +35 °C	ENEC mark	Temperature 650 °C, duration 30 s
83894900	DN500B 20S/840 PSU-E C WH	+10 to +35 °C	ENEC mark	Temperature 650 °C, duration 30 s
79348700	DN472B LED20S/840 PSU-E C WH PCO P	-15 to +40 °C	ENEC mark	Temperature 750 °C, duration 30 s

Order Code	Full Product Name	Ambient temperature range	ENEC mark	Glow-wire test
83904500	DN510B 20S/840 PSU-E OC WH	+10 to +35 °C	ENEC mark	Temperature 650 °C, duration 30 s
83909000	DN510B 30S/840 PSU-E OC WH	+10 to +35 °C	ENEC mark	Temperature 650 °C, duration 30 s
83896300	DN500B 20S/840 PSU-E C BK	+10 to +35 °C	ENEC mark	Temperature 650 °C, duration 30 s
83907600	DN510B 20S/840 PSU-E OC WH PCC	+10 to +35 °C	ENEC mark	Temperature 650 °C, duration 30 s
83903800	DN510B 20S/840 PSU-E C BK	+10 to +35 °C	ENEC mark	Temperature 650 °C, duration 30 s
83905200	DN510B 20S/840 PSU-E C WH PCC	+10 to +35 °C	ENEC mark	Temperature 650 °C, duration 30 s
83901400	DN510B 20S/840 PSU-E C WH	+10 to +35 °C	ENEC mark	Temperature 650 °C, duration 30 s
83908300	DN510B 30S/840 PSU-E C WH	+10 to +35 °C	ENEC mark	Temperature 650 °C, duration 30 s
83898700	DN500B 20S/840 PSU-E C WH PCC	+10 to +35 °C	ENEC mark	Temperature 650 °C, duration 30 s
83899400	DN500B 20S/840 PSU-E WR WH PCO	+10 to +35 °C	ENEC mark	Temperature 650 °C, duration 30 s

Order Code	Full Product Name	Ambient temperature range	ENEC mark	Glow-wire test
83902100	DN510B 20S/840 PSU-E C GR	+10 to +35 °C	ENEC mark	Temperature 650 °C, duration 30 s

**Initial Performance (IEC Compliant)**

Order Code	Full Product Name	Initial chromaticity
83897000	DN500B 20S/840 PSU-E OC WH	(0.38, 0.38) SDCM <3
83900700	DN500B 20S/840 PSU-E OC WH PCC	(0.38, 0.38) SDCM <3
79331900	DN471B LED20S/830 PSU-E C WH P	(0.43, 0.40) SDCM<3
83895600	DN500B 20S/840 PSU-E C GR	(0.38, 0.38) SDCM <3
94575600	DN470B LED30S/830 PSU-E C WH P	(0.43, 0.40) SDCM<3
83906900	DN510B 20S/840 PSU-E WR WH PCO	(0.38, 0.38) SDCM <3
83893200	DN500B 20S/830 PSU-E C WH	(0.38, 0.38) SDCM <3
83894900	DN500B 20S/840 PSU-E C WH	(0.38, 0.38) SDCM <3
79348700	DN472B LED20S/840 PSU-E C WH PCO P	(0.38, 0.38) SDCM<3
83904500	DN510B 20S/840 PSU-E OC WH	(0.38, 0.38) SDCM <3

Order Code	Full Product Name	Initial chromaticity
83909000	DN510B 30S/840 PSU-E OC WH	(0.38, 0.38) SDCM <3
83896300	DN500B 20S/840 PSU-E C BK	(0.38, 0.38) SDCM <3
83907600	DN510B 20S/840 PSU-E OC WH PCC	(0.38, 0.38) SDCM <3
83903800	DN510B 20S/840 PSU-E C BK	(0.38, 0.38) SDCM <3
83905200	DN510B 20S/840 PSU-E C WH PCC	(0.38, 0.38) SDCM <3
83901400	DN510B 20S/840 PSU-E C WH	(0.38, 0.38) SDCM <3
83908300	DN510B 30S/840 PSU-E C WH	(0.38, 0.38) SDCM <3
83898700	DN500B 20S/840 PSU-E C WH PCC	(0.38, 0.38) SDCM <3
83899400	DN500B 20S/840 PSU-E WR WH PCO	(0.38, 0.38) SDCM <3
83902100	DN510B 20S/840 PSU-E C GR	(0.38, 0.38) SDCM <3

**Over Time Performance (IEC Compliant)**

Order Code	Full Product Name	Driver failure rate at 5000 h
83897000	DN500B 20S/840 PSU-E OC WH	10 %
83900700	DN500B 20S/840 PSU-E OC WH PCC	10 %
79331900	DN471B LED20S/830 PSU-E C WH P	1 %
83895600	DN500B 20S/840 PSU-E C GR	10 %
94575600	DN470B LED30S/830 PSU-E C WH P	1 %
83906900	DN510B 20S/840 PSU-E WR WH PCO	10 %
83893200	DN500B 20S/830 PSU-E C WH	10 %
83894900	DN500B 20S/840 PSU-E C WH	10 %
79348700	DN472B LED20S/840 PSU-E C WH PCO P	1 %
83904500	DN510B 20S/840 PSU-E OC WH	10 %

Order Code	Full Product Name	Driver failure rate at 5000 h
83909000	DN510B 30S/840 PSU-E OC WH	10 %
83896300	DN500B 20S/840 PSU-E C BK	10 %
83907600	DN510B 20S/840 PSU-E OC WH PCC	10 %
83903800	DN510B 20S/840 PSU-E C BK	10 %
83905200	DN510B 20S/840 PSU-E C WH PCC	10 %
83901400	DN510B 20S/840 PSU-E C WH	10 %
83908300	DN510B 30S/840 PSU-E C WH	10 %
83898700	DN500B 20S/840 PSU-E C WH PCC	10 %
83899400	DN500B 20S/840 PSU-E WR WH PCO	10 %
83902100	DN510B 20S/840 PSU-E C GR	10 %

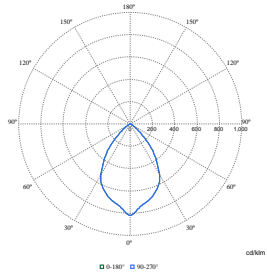
**Product Data**

Order Code	Full Product Name	Product family code
83897000	DN500B 20S/840 PSU-E OC WH	DN500B
83900700	DN500B 20S/840 PSU-E OC WH PCC	DN500B
79331900	DN471B LED20S/830 PSU-E C WH P	DN471B
83895600	DN500B 20S/840 PSU-E C GR	DN500B
94575600	DN470B LED30S/830 PSU-E C WH P	DN470B
83906900	DN510B 20S/840 PSU-E WR WH PCO	DN510B
83893200	DN500B 20S/830 PSU-E C WH	DN500B
83894900	DN500B 20S/840 PSU-E C WH	DN500B
79348700	DN472B LED20S/840 PSU-E C WH PCO P	DN472B
83904500	DN510B 20S/840 PSU-E OC WH	DN510B

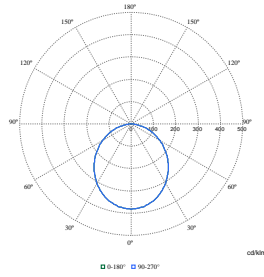
Order Code	Full Product Name	Product family code
83909000	DN510B 30S/840 PSU-E OC WH	DN510B
83896300	DN500B 20S/840 PSU-E C BK	DN500B
83907600	DN510B 20S/840 PSU-E OC WH PCC	DN510B
83903800	DN510B 20S/840 PSU-E C BK	DN510B
83905200	DN510B 20S/840 PSU-E C WH PCC	DN510B
83901400	DN510B 20S/840 PSU-E C WH	DN510B
83908300	DN510B 30S/840 PSU-E C WH	DN510B
83898700	DN500B 20S/840 PSU-E C WH PCC	DN500B
83899400	DN500B 20S/840 PSU-E WR WH PCO	DN500B
83902100	DN510B 20S/840 PSU-E C GR	DN510B



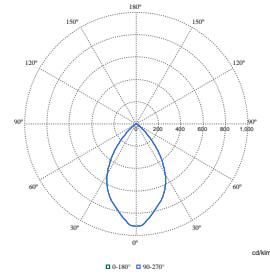
Polar Wide Diagrams



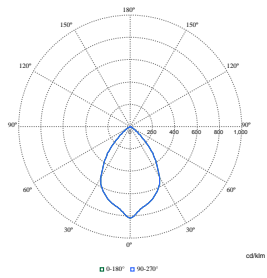
Polar Normal (separate) - 910505105015



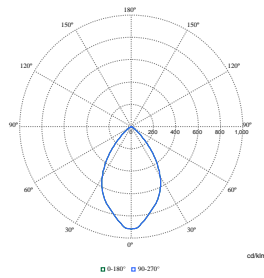
Polar Normal (separate) - 910505105016



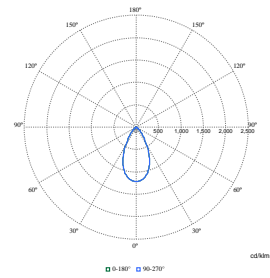
Polar Normal (separate) - 910505105008



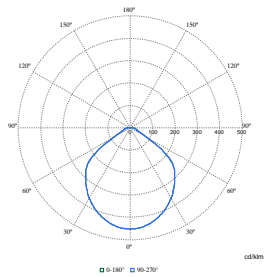
Polar Normal (separate) - 910505105012



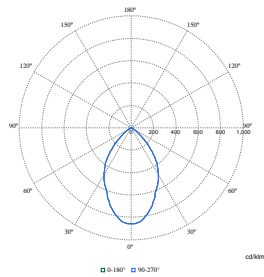
Polar Normal (separate) - 910505105006



Polar Normal (separate) - DN460BN - 912500100526



Polar Normal (separate) - DN460BN - 912500100543



Polar Normal (separate) - DN460BN - 912500101305

