



# GreenSpace Downlight - en effektiv og bæredygtig LED- løsning

## GreenSpace Downlight

GreenSpace er den ideelle LED-downlight til projekter, hvor der ønskes en optimal balance mellem initial investering og samlede installationsomkostninger over hele systemets levetid – samtidig med høj fleksibilitet i anvendelsen. Armaturet er udstyret med den nyeste LED-teknologi, hvilket sikrer et ekstremt lavt energiforbrug. Den præcist udskårne pasform fra 150 til 280 mm gør det nemt altid at finde en LED-downlight, der passer perfekt og fremstår visuelt korrekt. GreenSpace Downlight er udviklet med fokus på cirkulær økonomi, optimeret ydeevne og forlænget levetid gennem intelligente opgraderings- og integrationsmuligheder. Armaturet er desuden designet til nem tilpasning, genbrug og adskillelse.

### Fordele

- LED Downlights er en god investering og tjener sig ind på få år takket være store energibesparelser og lang levetid.
- Fleksibelt sortiment, der imødekommer forskellige behov og løsninger
- Perfekt til eftermontering (tilpassede udskæringsstørrelser 150 mm til 280 mm) for hurtigere installation
- Vælg mellem 28 størrelser og lysudbytte som passer til forskellige anvendelsesformål
- Opfylder kravene til kontorbelysning, med stabil farveydelse og bred lysfordeling

# GreenSpace Downlight

## Funktioner

- Mini (DN460B) og kompakte (DN470B) størrelser til indbygning
- Fås som påbygget, skinnemonteret eller pendeludgave
- Høj effektivitet: op til 131 lm/W
- UGR19- og UGR22-versioner
- Fås i 3000 lumen til afskærmning på steder med ekstra højt til loftet
- Farve på armaturhus: Sølv og sort
- Beskyttelsescover (IP54 og udvalg af nødbelysning)
- Kan konfigureres med mange drivertyper f.eks. DALI, PoE og Interact ready (trådløs)

## Anvendelsesområder

- Kontorer
- Detailhandel
- Hoteller og restauranter
- Hospitaler og plejehjem

## Versions

GreenSpace Mini, office-compliant  
reflector, white rim



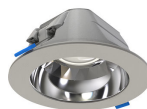
GreenSpace Mini, office-compliant  
reflector, protection cover clear,  
white rim



Greenspace EU gen 2-DN473B



GreenSpace Mini, high-gloss  
reflector, grey rim



GreenSpace Compact, white  
reflector, protection cover opal,  
white rim



Greenspace EU gen 2-DN462B

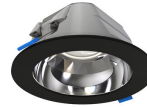


# GreenSpace Downlight

## Versions



GreenSpace Compact, office-compliant reflector, white rim



GreenSpace Mini, high-gloss reflector, black rim



GreenSpace Compact, office-compliant reflector, protection cover clear, white rim



GreenSpace Compact, high-gloss reflector, black rim



GreenSpace Compact, high-gloss reflector, protection cover clear, white rim



GreenSpace Mini, high-gloss reflector, protection cover clear, white rim



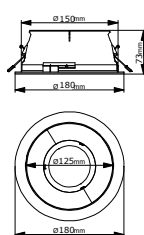
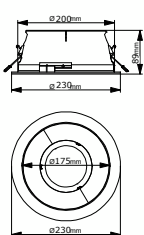
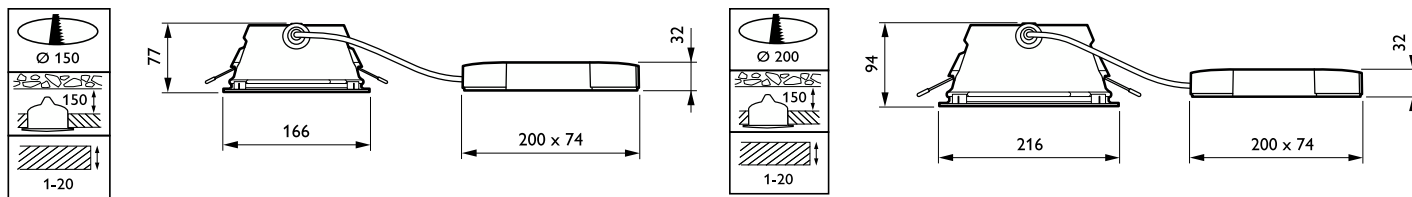
GreenSpace Mini, white reflector, protection cover opal, white rim



GreenSpace Compact, high-gloss reflector, grey rim

# GreenSpace Downlight

## Målskitse



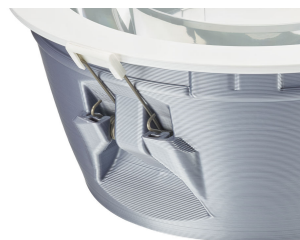
## Oplysninger om produktet



Greenspace\_EU\_gen\_2-DN472B-DPP.TIF



Greenspace\_EU\_gen\_2-DN462\_463\_472\_473B-1DPP.TIF



Greenspace\_EU\_gen\_2-DN462\_463\_472\_473B-3DPP.TIF

# GreenSpace Downlight

## Oplysninger om produktet

Greenspace\_EU\_gen\_2-  
DN462\_463\_472\_473B-2DPP.TIF



Generelle oplysninger	
Driver inkluderet	Ja
Forkobling	-
Antal forkoblingsenheder	1 enhed
Lysteknisk	
Antal lyskilder	1
Drift og el	
Beskyttelsesklasse IEC	Sikkerhedsklasse II
Linjefrekvens	50 to 60 Hz
Lysstyringssystemer og dæmpning	
Dæmpbar	Nej
Mekanik og armaturhus	
Kode for mekanisk støbeskyttelse	IK02
Godkendelse og anvendelsesområde	
CE-mærke	Ja
ENEC-mærke	ENEC-mærke
Mærke for brændbarhed	-
Indledende ydelse (overholder IEC-standarden)	
Lysstrømtolerance	+/-10%

## Generelle oplysninger

Order Code	Full Product Name	Kode for lamperserie	Udskiftelig lyskilde	Service-kode
910505105007	DN500B 20S/840 PSU-E OC WH	-	-	-
910505105010	DN500B 20S/840 PSU-E OC WH PCC	-	-	-
912500100526	DN471B LED20S/830 PSU-E C WH P	LED20S	Nej	Ja
910505105005	DN500B 20S/840 PSU-E C GR	-	-	-
912500100071	DN472B LED20S/840 PSU-E C WH PCC P	LED20S	Nej	Ja
912500100523	DN470B LED20S/840 PSU-E C WH P	LED20S	Nej	Ja
910505105016	DN510B 20S/840 PSU-E WR WH PCO	-	-	-
910505104972	DN500B 11S/830 PSU-E C WH	-	-	-
910505105003	DN500B 20S/830 PSU-E C WH	-	-	-
910505105004	DN500B 20S/840 PSU-E C WH	-	-	-
912500100514	DN460B LED11S/830 PSU-E C WH P	LED11S	Nej	Ja
910505105014	DN510B 20S/840 PSU-E OC WH	-	-	-
910505105019	DN510B 30S/840 PSU-E OC WH	-	-	-
910505105006	DN500B 20S/840 PSU-E C BK	-	-	-
910505105017	DN510B 20S/840 PSU-E OC WH PCC	-	-	-
910505105013	DN510B 20S/840 PSU-E C BK	-	-	-
910505105015	DN510B 20S/840 PSU-E C WH PCC	-	-	-
910505104973	DN510B 20S/830 PSU-E C WH	-	-	-
910505105011	DN510B 20S/840 PSU-E C WH	-	-	-
910505105018	DN510B 30S/840 PSU-E C WH	-	-	-
910505105008	DN500B 20S/840 PSU-E C WH PCC	-	-	-
910505105009	DN500B 20S/840 PSU-E WR WH PCO	-	-	-
910505105012	DN510B 20S/840 PSU-E C GR	-	-	-

## Lysteknisk (1/2)

Order Code	Full Product Name	Lyskildens strålevinkel (nom.)	Korreleret		Lyseffekt (nominel) (nom.)	Order Code	Full Product Name	Lyskildens strålevinkel (nom.)	Korreleret		Lyseffekt (nominel) (nom.)
			farvetemperatur (nom.)	Farvegengivelsesindeks (CRI)					farvetemperatur (nom.)	Farvegengivelsesindeks (CRI)	
910505105007	DN500B 20S/840 PSU-E OC WH	-	4000 K	80	149 lm/W	912500100526	DN471B LED20S/830	-°	3000 K	>80	137 lm/W

## GreenSpace Downlight

Order Code	Full			Korreleret		Lyseffekt		Order Code	Full			Korreleret		Lyseffekt	
	Product Name	Lyskildens strålevinkel	farvetemperatur (nom.)	Farvegengivelsesindeks (CRI)	(nominel (nom.))	(nominel (nom.))	Product Name		Lyskildens strålevinkel	farvetemperatur (nom.)	Farvegengivelsesindeks (CRI)	(nominel (nom.))	(nominel (nom.))		
	PSU-E C WH P						PSU-E OC WH								
910505105005	DN500B 20S/840 PSU-E C GR	-	4000 K	80	157 lm/W	910505105006	DN500B 20S/840 PSU-E C BK	-	4000 K	80	157 lm/W				
912500100071	DN472B LED20S/ 840 PSU-E C WH PCC P	- °	4000 K	>80	141 lm/W	910505105017	DN510B 20S/840 PSU-E OC WH PCC	-	4000 K	80	146 lm/W				
912500100523	DN470B LED20S/ 840 PSU-E C WH P	- °	4000 K	>80	147 lm/W	910505105013	DN510B 20S/840 PSU-E C BK	-	4000 K	80	157 lm/W				
910505105016	DN510B 20S/840 PSU-E WR WH PCO	-	4000 K	80	146 lm/W	910505105015	DN510B 20S/840 PSU-E C WH PCC	-	4000 K	80	149 lm/W				
910505104972	DN500B 11S/830 PSU-E C WH	-	3000 K	80	149 lm/W	910505104973	DN510B 20S/830 PSU-E C WH	-	3000 K	80	146 lm/W				
910505105003	DN500B 20S/830 PSU-E C WH	-	3000 K	80	146 lm/W	910505105011	DN510B 20S/840 PSU-E C WH	-	4000 K	80	157 lm/W				
910505105004	DN500B 20S/840 PSU-E C WH	-	4000 K	80	157 lm/W	910505105018	DN510B 30S/840 PSU-E C WH	-	4000 K	80	161 lm/W				
912500100514	DN460B LED11S/ 830 PSU-E C WH P	- °	3000 K	>80	133 lm/W	910505105008	DN500B 20S/840 PSU-E C WH PCC	-	4000 K	80	149 lm/W				
910505105014	DN510B 20S/840 PSU-E OC WH	-	4000 K	80	149 lm/W	910505105009	DN500B 20S/840 PSU-E WR WH PCO	-	4000 K	80	138 lm/W				
910505105019	DN510B 30S/840	-	4000 K	80	156 lm/W	910505105012	DN510B 20S/840 PSU-E C GR	-	4000 K	80	157 lm/W				

### Lysteknisk (2/2)

Order Code	Full Product Name	Lysstrøm	Optiktype	Order Code	Full Product Name	Lysstrøm	Optiktype
910505105007	DN500B 20S/840 PSU-E OC WH	2.000 lm	Højglans spejl	910505105010	DN500B 20S/840 PSU-E OC WH PCC	1.950 lm	Højglans spejl

## GreenSpace Downlight

Order Code	Full Product Name	Lysstrøm	Optiktype
912500100526	DN471B LED20S/830 PSU-E C WH P	1.800 lm	-
910505105005	DN500B 20S/840 PSU-E C GR	2.100 lm	Højglans spejl
912500100071	DN472B LED20S/840 PSU-E C WH PCC P	1.850 lm	-
912500100523	DN470B LED20S/840 PSU-E C WH P	1.950 lm	-
910505105016	DN510B 20S/840 PSU-E WR WH PCO	1.950 lm	Højglans spejl
910505104972	DN500B 11S/830 PSU-E C WH	1.150 lm	Højglans spejl
910505105003	DN500B 20S/830 PSU-E C WH	1.950 lm	Højglans spejl
910505105004	DN500B 20S/840 PSU-E C WH	2.100 lm	Højglans spejl
912500100514	DN460B LED11S/830 PSU-E C WH P	1.100 lm	-
910505105014	DN510B 20S/840 PSU-E OC WH	2.000 lm	Højglans spejl
910505105019	DN510B 30S/840 PSU-E OC WH	3.000 lm	Højglans spejl

Order Code	Full Product Name	Lysstrøm	Optiktype
910505105006	DN500B 20S/840 PSU-E C BK	2.100 lm	Højglans spejl
910505105017	DN510B 20S/840 PSU-E OC WH PCC	1.950 lm	Højglans spejl
910505105013	DN510B 20S/840 PSU-E C BK	2.100 lm	Højglans spejl
910505105015	DN510B 20S/840 PSU-E C WH PCC	2.000 lm	Højglans spejl
910505104973	DN510B 20S/830 PSU-E C WH	1.950 lm	Højglans spejl
910505105011	DN510B 20S/840 PSU-E C WH	2.100 lm	Højglans spejl
910505105018	DN510B 30S/840 PSU-E C WH	3.100 lm	Højglans spejl
910505105008	DN500B 20S/840 PSU-E C WH PCC	2.000 lm	Højglans spejl
910505105009	DN500B 20S/840 PSU-E WR WH PCO	1.850 lm	Højglans spejl
910505105012	DN510B 20S/840 PSU-E C GR	2.100 lm	Højglans spejl

### Drift og el

Order Code	Full Product Name	Indgangsspænding	Strømförbrug	Velegnet til tilfældigt skift
910505105007	DN500B 20S/840 PSU-E OC WH	220 til 240 V	13,5 W	Nej
910505105010	DN500B 20S/840 PSU-E OC WH PCC	220 til 240 V	13,5 W	Nej
912500100526	DN471B LED20S/830 PSU-E C WH P	220-240 V	13,3 W	Ja
910505105005	DN500B 20S/840 PSU-E C GR	220 til 240 V	13,5 W	Nej
912500100071	DN472B LED20S/840 PSU-E C WH PCC P	220 til 240 V	13,3 W	Ja
912500100523	DN470B LED20S/840 PSU-E C WH P	220-240 V	13,3 W	Ja
910505105016	DN510B 20S/840 PSU-E WR WH PCO	220 til 240 V	13,5 W	Nej
910505104972	DN500B 11S/830 PSU-E C WH	220 til 240 V	7,7 W	Nej
910505105003	DN500B 20S/830 PSU-E C WH	220 til 240 V	13,5 W	Nej
910505105004	DN500B 20S/840 PSU-E C WH	220 til 240 V	13,5 W	Nej
912500100514	DN460B LED11S/830 PSU-E C WH P	220-240 V	8,2 W	Ja
910505105014	DN510B 20S/840 PSU-E OC WH	220 til 240 V	13,5 W	Nej

Order Code	Full Product Name	Indgangsspænding	Strømförbrug	Velegnet til tilfældigt skift
910505105019	DN510B 30S/840 PSU-E OC WH	220 til 240 V	19,1 W	Nej
910505105006	DN500B 20S/840 PSU-E C BK	220 til 240 V	13,5 W	Nej
910505105017	DN510B 20S/840 PSU-E OC WH PCC	220 til 240 V	13,5 W	Nej
910505105013	DN510B 20S/840 PSU-E C BK	220 til 240 V	13,5 W	Nej
910505105015	DN510B 20S/840 PSU-E C WH PCC	220 til 240 V	13,5 W	Nej
910505104973	DN510B 20S/830 PSU-E C WH	220 til 240 V	7 W	Nej
910505105011	DN510B 20S/840 PSU-E C WH	220 til 240 V	13,5 W	Nej
910505105018	DN510B 30S/840 PSU-E C WH	220 til 240 V	19,1 W	Nej
910505105008	DN500B 20S/840 PSU-E C WH PCC	220 til 240 V	13,5 W	Nej
910505105009	DN500B 20S/840 PSU-E WR WH PCO	220 til 240 V	13,5 W	Nej
910505105012	DN510B 20S/840 PSU-E C GR	220 til 240 V	13,5 W	Nej

### Lysstyringssystemer og dæmpning

Order Code	Full Product Name	Maksimalt dæmpningsniveau
910505105007	DN500B 20S/840 PSU-E OC WH	-
910505105010	DN500B 20S/840 PSU-E OC WH PCC	-
912500100526	DN471B LED20S/830 PSU-E C WH P	Ikke relevant
910505105005	DN500B 20S/840 PSU-E C GR	-

Order Code	Full Product Name	Maksimalt dæmpningsniveau
912500100071	DN472B LED20S/840 PSU-E C WH PCC P	Ikke relevant
912500100523	DN470B LED20S/840 PSU-E C WH P	Ikke relevant
910505105016	DN510B 20S/840 PSU-E WR WH PCO	-
910505104972	DN500B 11S/830 PSU-E C WH	-

## GreenSpace Downlight

Order Code	Full Product Name	Maksimalt dæmpningsniveau
910505105003	DN500B 20S/830 PSU-E C WH	-
910505105004	DN500B 20S/840 PSU-E C WH	-
912500100514	DN460B LED11S/830 PSU-E C WH P	Ikke relevant
910505105014	DN510B 20S/840 PSU-E OC WH	-
910505105019	DN510B 30S/840 PSU-E OC WH	-
910505105006	DN500B 20S/840 PSU-E C BK	-
910505105017	DN510B 20S/840 PSU-E OC WH PCC	-
910505105013	DN510B 20S/840 PSU-E C BK	-

Order Code	Full Product Name	Maksimalt dæmpningsniveau
910505105015	DN510B 20S/840 PSU-E C WH PCC	-
910505104973	DN510B 20S/830 PSU-E C WH	-
910505105011	DN510B 20S/840 PSU-E C WH	-
910505105018	DN510B 30S/840 PSU-E C WH	-
910505105008	DN500B 20S/840 PSU-E C WH PCC	-
910505105009	DN500B 20S/840 PSU-E WR WH PCO	-
910505105012	DN510B 20S/840 PSU-E C GR	-

### Mekanik og armaturhus

Order Code	Full Product Name	Farve på armaturhus	Kode for indtrængningsbeskyttelse
910505105007	DN500B 20S/840 PSU-E OC WH	Grå	IP20
910505105010	DN500B 20S/840 PSU-E OC WH PCC	Grå	IP20/54
912500100526	DN471B LED20S/830 PSU-E C WH P	Hvid	IP20
910505105005	DN500B 20S/840 PSU-E C GR	Grå	IP20
912500100071	DN472B LED20S/840 PSU-E C WH PCC P	Hvid	IP20/54
912500100523	DN470B LED20S/840 PSU-E C WH P	Hvid	IP20
910505105016	DN510B 20S/840 PSU-E WR WH PCO	Grå	IP20/54
910505104972	DN500B 11S/830 PSU-E C WH	Grå	IP20
910505105003	DN500B 20S/830 PSU-E C WH	Grå	IP20
910505105004	DN500B 20S/840 PSU-E C WH	Grå	IP20
912500100514	DN460B LED11S/830 PSU-E C WH P	Hvid	IP20
910505105014	DN510B 20S/840 PSU-E OC WH	Grå	IP20

Order Code	Full Product Name	Farve på armaturhus	Kode for indtrængningsbeskyttelse
910505105019	DN510B 30S/840 PSU-E OC WH	Grå	IP20
910505105006	DN500B 20S/840 PSU-E C BK	Grå	IP20
910505105017	DN510B 20S/840 PSU-E OC WH PCC	Grå	IP20/54
910505105013	DN510B 20S/840 PSU-E C BK	Grå	IP20
910505105015	DN510B 20S/840 PSU-E C WH PCC	Grå	IP20/54
910505104973	DN510B 20S/830 PSU-E C WH	Grå	IP20
910505105011	DN510B 20S/840 PSU-E C WH	Grå	IP20
910505105018	DN510B 30S/840 PSU-E C WH	Grå	IP20
910505105008	DN500B 20S/840 PSU-E C WH PCC	Grå	IP20/54
910505105009	DN500B 20S/840 PSU-E WR WH PCO	Grå	IP20/54
910505105012	DN510B 20S/840 PSU-E C GR	Grå	IP20

### Nøddrift

Order Code	Full Product Name	Centraliseret nødbelysning
910505105007	DN500B 20S/840 PSU-E OC WH	-
910505105010	DN500B 20S/840 PSU-E OC WH PCC	-
912500100526	DN471B LED20S/830 PSU-E C WH P	Nej
910505105005	DN500B 20S/840 PSU-E C GR	-
912500100071	DN472B LED20S/840 PSU-E C WH PCC P	Nej
912500100523	DN470B LED20S/840 PSU-E C WH P	Nej
910505105016	DN510B 20S/840 PSU-E WR WH PCO	-
910505104972	DN500B 11S/830 PSU-E C WH	-
910505105003	DN500B 20S/830 PSU-E C WH	-

Order Code	Full Product Name	Centraliseret nødbelysning
910505105004	DN500B 20S/840 PSU-E C WH	-
912500100514	DN460B LED11S/830 PSU-E C WH P	Nej
910505105014	DN510B 20S/840 PSU-E OC WH	-
910505105019	DN510B 30S/840 PSU-E OC WH	-
910505105006	DN500B 20S/840 PSU-E C BK	-
910505105017	DN510B 20S/840 PSU-E OC WH PCC	-
910505105013	DN510B 20S/840 PSU-E C BK	-
910505105015	DN510B 20S/840 PSU-E C WH PCC	-
910505104973	DN510B 20S/830 PSU-E C WH	-

## GreenSpace Downlight

Order Code	Full Product Name	Centraliseret nødbelysning
910505105011	DN510B 20S/840 PSU-E C WH	-
910505105018	DN510B 30S/840 PSU-E C WH	-
910505105008	DN500B 20S/840 PSU-E C WH PCC	-

Order Code	Full Product Name	Centraliseret nødbelysning
910505105009	DN500B 20S/840 PSU-E WR WH PCO	-
910505105012	DN510B 20S/840 PSU-E C GR	-

### Godkendelse og anvendelsesområde

Order Code	Full Product Name	Omgivelsestemperaturområde	Glødetrådtest	Værdi for stroboskopisk effekt (SVM)
910505105007	DN500B 20S/840 PSU-E OC WH	+10 til +35 °C	Temperatur 650 °C, varighed 30 s	-
910505105010	DN500B 20S/840 PSU-E OC WH PCC	+10 til +35 °C	Temperatur 650 °C, varighed 30 s	-
912500100526	DN471B LED20S/830 PSU-E C WH P	+10 til +40 °C	Temperatur 750 °C, varighed 30 s	-
910505105005	DN500B 20S/840 PSU-E C GR	+10 til +35 °C	Temperatur 650 °C, varighed 30 s	-
912500100071	DN472B LED20S/840 PSU-E C WH PCC P	-15 til +40 °C	Temperatur 750 °C, varighed 30 s	-
912500100523	DN470B LED20S/840 PSU-E C WH P	+10 til +40 °C	Temperatur 750 °C, varighed 30 s	-
910505105016	DN510B 20S/840 PSU-E WR WH PCO	+10 til +35 °C	Temperatur 650 °C, varighed 30 s	-
910505104972	DN500B 11S/830 PSU-E C WH	+10 til +35 °C	Temperatur 650 °C, varighed 30 s	-
910505105003	DN500B 20S/830 PSU-E C WH	+10 til +35 °C	Temperatur 650 °C, varighed 30 s	-

Order Code	Full Product Name	Omgivelsestemperaturområde	Glødetrådtest	Værdi for stroboskopisk effekt (SVM)
910505105004	DN500B 20S/840 PSU-E C WH	+10 til +35 °C	Temperatur 650 °C, varighed 30 s	-
912500100514	DN460B LED11S/830 PSU-E C WH P	+10 til +40 °C	Temperatur 650 °C, varighed 30 s	0,4
910505105014	DN510B 20S/840 PSU-E OC WH	+10 til +35 °C	Temperatur 650 °C, varighed 30 s	-
910505105019	DN510B 30S/840 PSU-E OC WH	+10 til +35 °C	Temperatur 650 °C, varighed 30 s	-
910505105006	DN500B 20S/840 PSU-E C BK	+10 til +35 °C	Temperatur 650 °C, varighed 30 s	-
910505105017	DN510B 20S/840 PSU-E OC WH PCC	+10 til +35 °C	Temperatur 650 °C, varighed 30 s	-
910505105013	DN510B 20S/840 PSU-E C BK	+10 til +35 °C	Temperatur 650 °C, varighed 30 s	-
910505105015	DN510B 20S/840 PSU-E C WH PCC	+10 til +35 °C	Temperatur 650 °C, varighed 30 s	-
910505104973	DN510B 20S/830 PSU-E C WH	+10 til +35 °C	Temperatur 650 °C, varighed 30 s	-
910505105011	DN510B 20S/840 PSU-E C WH	+10 til +35 °C	Temperatur 650 °C, varighed 30 s	-

## GreenSpace Downlight

Order Code	Full Product			Værdi for stroboskopisk effekt (SVM)
	Name	Omgivelsestemperaturområde	Glødetrådstest	
910505105018	DN510B 30S/840 PSU-E C WH	+10 til +35 °C	Temperatur 650 °C, varighed 30 s	-
910505105008	DN500B 20S/840 PSU-E C WH PCC	+10 til +35 °C	Temperatur 650 °C, varighed 30 s	-
910505105009	DN500B 20S/840 PSU-E WR WH PCO	+10 til +35 °C	Temperatur 650 °C, varighed 30 s	-

Order Code	Full Product			Værdi for stroboskopisk effekt (SVM)
	Name	Omgivelsestemperaturområde	Glødetrådstest	
910505105012	DN510B 20S/840 PSU-E C GR	+10 til +35 °C	Temperatur 650 °C, varighed 30 s	-

### Indledende ydelse (overholder IEC-standarden)

Order Code	Full Product Name	Indledende kromaticitet
910505105007	DN500B 20S/840 PSU-E OC WH	(0.38, 0.38) SDCM <3
910505105010	DN500B 20S/840 PSU-E OC WH PCC	(0.38, 0.38) SDCM <3
912500100526	DN471B LED20S/830 PSU-E C WH P	(0.43, 0.40) SDCM<3
910505105005	DN500B 20S/840 PSU-E C GR	(0.38, 0.38) SDCM <3
912500100071	DN472B LED20S/840 PSU-E C WH PCC P	(0.38, 0.38) SDCM<3
912500100523	DN470B LED20S/840 PSU-E C WH P	(0.38, 0.38) SDCM<3
910505105016	DN510B 20S/840 PSU-E WR WH PCO	(0.38, 0.38) SDCM <3
910505104972	DN500B 11S/830 PSU-E C WH	(0.38, 0.38) SDCM <3
910505105003	DN500B 20S/830 PSU-E C WH	(0.38, 0.38) SDCM <3
910505105004	DN500B 20S/840 PSU-E C WH	(0.38, 0.38) SDCM <3
912500100514	DN460B LED11S/830 PSU-E C WH P	(0.43, 0.40) SDCM<3
910505105014	DN510B 20S/840 PSU-E OC WH	(0.38, 0.38) SDCM <3

Order Code	Full Product Name	Indledende kromaticitet
910505105019	DN510B 30S/840 PSU-E OC WH	(0.38, 0.38) SDCM <3
910505105006	DN500B 20S/840 PSU-E C BK	(0.38, 0.38) SDCM <3
910505105017	DN510B 20S/840 PSU-E OC WH PCC	(0.38, 0.38) SDCM <3
910505105013	DN510B 20S/840 PSU-E C BK	(0.38, 0.38) SDCM <3
910505105015	DN510B 20S/840 PSU-E C WH PCC	(0.38, 0.38) SDCM <3
910505104973	DN510B 20S/830 PSU-E C WH	(0.38, 0.38) SDCM <3
910505105011	DN510B 20S/840 PSU-E C WH	(0.38, 0.38) SDCM <3
910505105018	DN510B 30S/840 PSU-E C WH	(0.38, 0.38) SDCM <3
910505105008	DN500B 20S/840 PSU-E C WH PCC	(0.38, 0.38) SDCM <3
910505105009	DN500B 20S/840 PSU-E WR WH PCO	(0.38, 0.38) SDCM <3
910505105012	DN510B 20S/840 PSU-E C GR	(0.38, 0.38) SDCM <3

### Ydelse over tid (overholder IEC-standarden)

Order Code	Full Product Name	Fejlfrekvens i driver ved 5.000 t.
910505105007	DN500B 20S/840 PSU-E OC WH	10 %
910505105010	DN500B 20S/840 PSU-E OC WH PCC	10 %
912500100526	DN471B LED20S/830 PSU-E C WH P	1 %
910505105005	DN500B 20S/840 PSU-E C GR	10 %
912500100071	DN472B LED20S/840 PSU-E C WH PCC P	1 %
912500100523	DN470B LED20S/840 PSU-E C WH P	1 %
910505105016	DN510B 20S/840 PSU-E WR WH PCO	10 %
910505104972	DN500B 11S/830 PSU-E C WH	10 %
910505105003	DN500B 20S/830 PSU-E C WH	10 %
910505105004	DN500B 20S/840 PSU-E C WH	10 %
912500100514	DN460B LED11S/830 PSU-E C WH P	1 %
910505105014	DN510B 20S/840 PSU-E OC WH	10 %

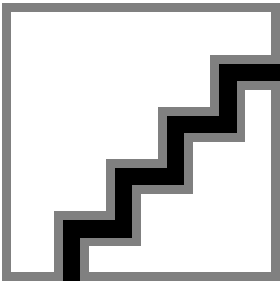
Order Code	Full Product Name	Fejlfrekvens i driver ved 5.000 t.
910505105019	DN510B 30S/840 PSU-E OC WH	10 %
910505105006	DN500B 20S/840 PSU-E C BK	10 %
910505105017	DN510B 20S/840 PSU-E OC WH PCC	10 %
910505105013	DN510B 20S/840 PSU-E C BK	10 %
910505105015	DN510B 20S/840 PSU-E C WH PCC	10 %
910505104973	DN510B 20S/830 PSU-E C WH	10 %
910505105011	DN510B 20S/840 PSU-E C WH	10 %
910505105018	DN510B 30S/840 PSU-E C WH	10 %
910505105008	DN500B 20S/840 PSU-E C WH PCC	10 %
910505105009	DN500B 20S/840 PSU-E WR WH PCO	10 %
910505105012	DN510B 20S/840 PSU-E C GR	10 %

### Produktdata

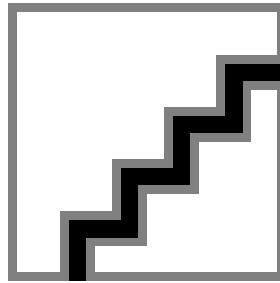
## GreenSpace Downlight

Order Code	Full Product Name	Produktseriekode	Order Code	Full Product Name	Produktseriekode
910505105007	DN500B 20S/840 PSU-E OC WH	DN500B	910505105019	DN510B 30S/840 PSU-E OC WH	DN510B
910505105010	DN500B 20S/840 PSU-E OC WH PCC	DN500B	910505105006	DN500B 20S/840 PSU-E C BK	DN500B
912500100526	DN471B LED20S/830 PSU-E C WH P	DN471B	910505105017	DN510B 20S/840 PSU-E OC WH PCC	DN510B
910505105005	DN500B 20S/840 PSU-E C GR	DN500B	910505105013	DN510B 20S/840 PSU-E C BK	DN510B
912500100071	DN472B LED20S/840 PSU-E C WH PCC P	DN472B	910505105015	DN510B 20S/840 PSU-E C WH PCC	DN510B
912500100523	DN470B LED20S/840 PSU-E C WH P	DN470B	910505104973	DN510B 20S/830 PSU-E C WH	-
910505105016	DN510B 20S/840 PSU-E WR WH PCO	DN510B	910505105011	DN510B 20S/840 PSU-E C WH	DN510B
910505104972	DN500B 11S/830 PSU-E C WH	-	910505105018	DN510B 30S/840 PSU-E C WH	DN510B
910505105003	DN500B 20S/830 PSU-E C WH	DN500B	910505105008	DN500B 20S/840 PSU-E C WH PCC	DN500B
910505105004	DN500B 20S/840 PSU-E C WH	DN500B	910505105009	DN500B 20S/840 PSU-E WR WH PCO	DN500B
912500100514	DN460B LED11S/830 PSU-E C WH P	DN460B	910505105012	DN510B 20S/840 PSU-E C GR	DN510B
910505105014	DN510B 20S/840 PSU-E OC WH	DN510B			

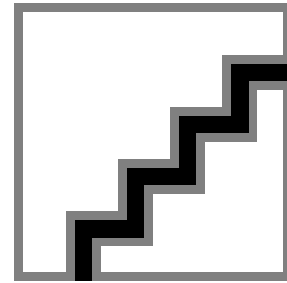
### Polar Wide Diagrams



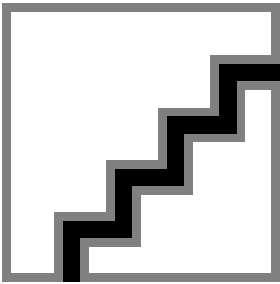
Polar Normal (separate) - 910505105013



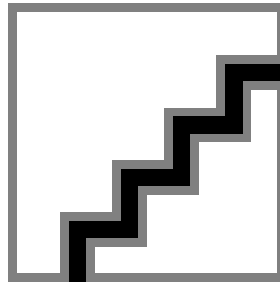
Polar Normal (separate) - 910505105004



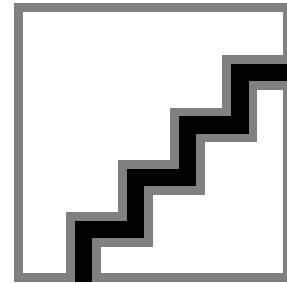
Polar Normal (separate) - 910505105017



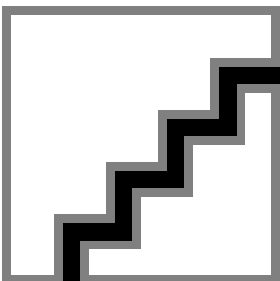
Polar Normal (separate) - 910505105005



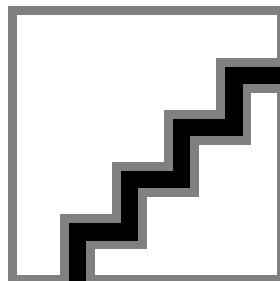
Polar Normal (separate) - 910505105014



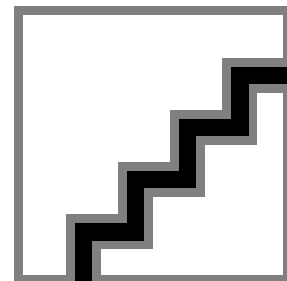
Polar Normal (separate) - 910505105007



Polar Normal (separate) - 910505105018



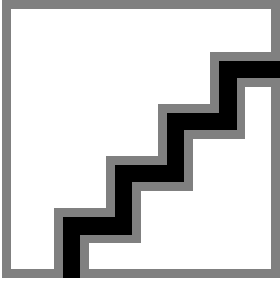
Polar Normal (separate) - 910505105019



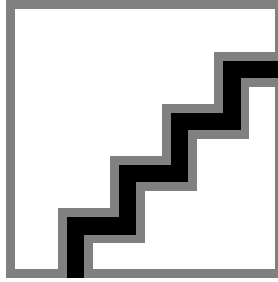
Polar Normal (separate) - 910505105009

# GreenSpace Downlight

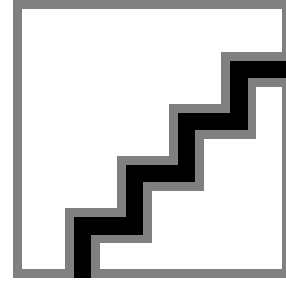
## Polar Wide Diagrams



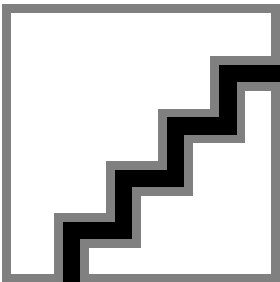
Polar Normal (separate) - 910505105010



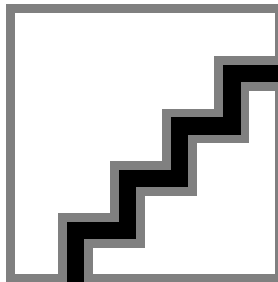
Polar Normal (separate) - 910505105011



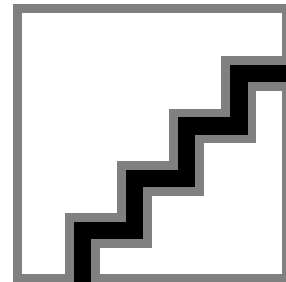
Polar Normal (separate) - 910505105003



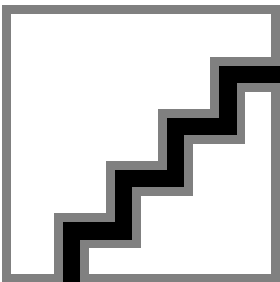
Polar Normal (separate) - 910505105015



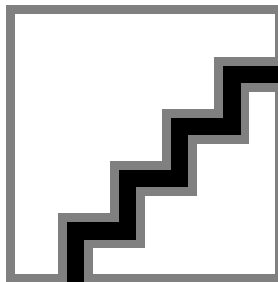
Polar Normal (separate) - 910505105016



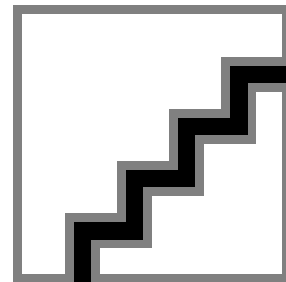
Polar Normal (separate) - 910505105008



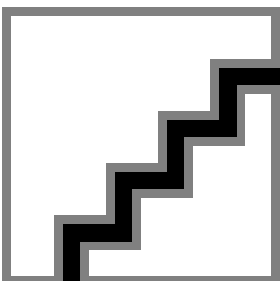
Polar Normal (separate) - 910505105012



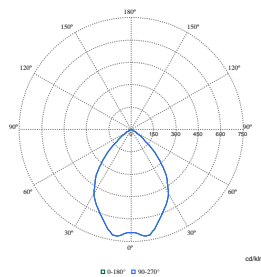
Polar Normal (separate) - 910505105006



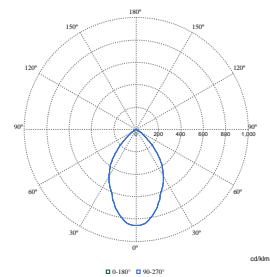
Polar Normal (separate) - 910505104972



Polar Normal (separate) - 910505104973



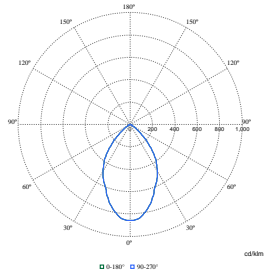
Polar Normal (separate) - DN460BN - 912500100071



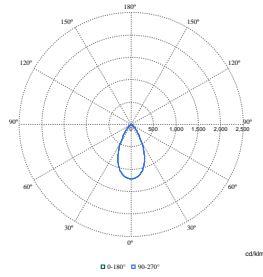
Polar Normal (separate) - DN460BN - 912500100523

# GreenSpace Downlight

## Polar Wide Diagrams



Polar Normal (separate) - DN460BN -  
912500100514



Polar Normal (separate) - DN460BN -  
912500100526

