



# Low energy LED downlights with super slim design

## GreenSpace Slim Downlight G2

GreenSpace Slim downlight is ultra-thin product for general lighting applications with limited build-in height, which is suitable for a series of lighting applications in general indoor areas. Available in a wide variety of lumen packs, cut out size, selectable CCT with less SKUs and dimming option.

### Benefits

- Get rid of installation limitation
- Easy stock built up to support fast delivery task
- Strong energy saving
- Long term quality & reliability
- Super color consistency
- Wide control options

### Features

- Delivering height less than 20mm (without clip) supported by edge lit structure
- 3000K/4000K selectable is enabling less SKU
- Up to 125lm/W
- 50Khrs L80B50 lifetime
- SDCM 3
- PSD & WIA options available

### Application

- General indoor area
- Office
- Corridors

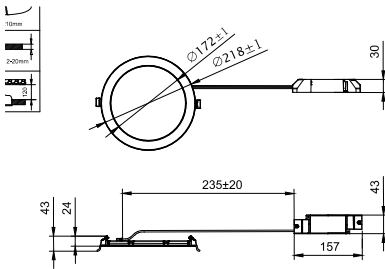
# GreenSpace Slim Downlight G2

## Versions

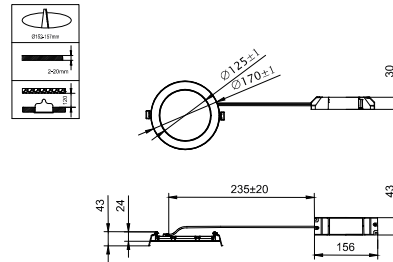


RTP-of-GreenSpace-Slim-Downlight-G2

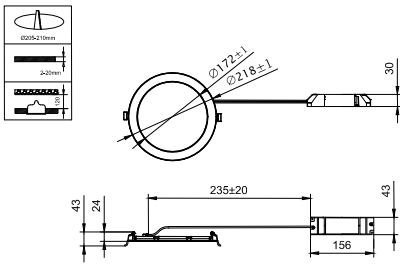
## Dimensional drawing



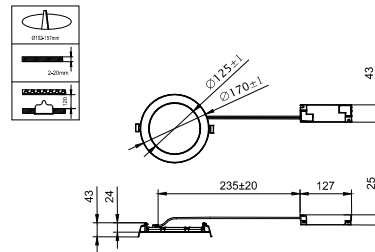
DN150X LED21S/830\_840 WIA WH G2



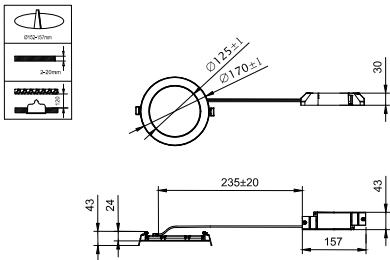
DN150B LED11S/830\_840 PSD WH G2



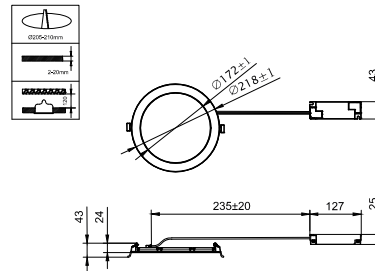
DN150B LED21S/830\_840 PSD WH G2



DN150B LED11S/830\_840 PSU WH G2



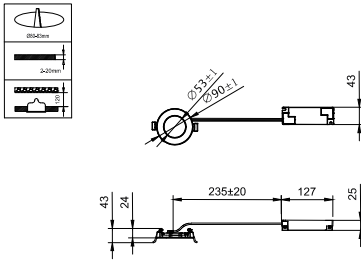
DN150X LED11S/830\_840 WIA WH G2



DN150B LED21S/830\_840 PSU WH G2

# GreenSpace Slim Downlight G2

## Dimensional drawing



DN150B LED7S/830\_840 PSU WH G2

# GreenSpace Slim Downlight G2

## General Information

Driver included	Yes
Gear	EB
Number of gear units	1 unit

## Light Technical

Beam angle of light source	90 degree(s)
Correlated Color Temperature (Nom)	3000 K
Color rendering index (CRI)	≥80
Number of light sources	1
Optic type	Beam angle 90°

## Operating and Electrical

Protection class IEC	Safety class II
Input Voltage	220 to 240 V
Line Frequency	50 or 60 Hz
Suitable for random switching	No

## Mechanical and Housing

Optical cover type	Microprismatic cover
Housing Color	White RAL 9003
Mech. impact protection code	IK03
Ingress protection code	IP20(IP44 front)

## Approval and Application

Ambient temperature range	-20 °C to 40 °C
CE mark	Yes
ENEC mark	-
Flammability mark	For mounting on normally flammable surfaces
Glow-wire test	Temperature 650 °C, duration 30 s

## Initial Performance (IEC Compliant)

Initial chromaticity	(0.43,0.40) SDCM<3; (0.38,0.38) SDCM<3
Luminous flux tolerance	-10%,+15%

## Light Technical

Order Code	Full Product Name	Luminous Efficacy (rated) (Nom)	Luminous Flux
911401895287	DN150B LED7S/830_840 PSU WH G2	110 lm/W	715 lm
911401895487	DN150B LED21S/830_840 PSU WH G2	125 lm/W	2,100 lm
911401895687	DN150B LED21S/830_840 PSD WH G2	117 lm/W	2,100 lm
911401895887	DN150X LED21S/830_840 WIA WH G2	120 lm/W	2,100 lm
911401895387	DN150B LED11S/830_840 PSU WH G2	120 lm/W	1,150 lm
911401895587	DN150B LED11S/830_840 PSD WH G2	115 lm/W	1,150 lm
911401895787	DN150X LED11S/830_840 WIA WH G2	115 lm/W	1,150 lm

## Operating and Electrical

Order Code	Full Product Name	Power Consumption
911401895287	DN150B LED7S/830_840 PSU WH G2	6.5 W
911401895487	DN150B LED21S/830_840 PSU WH G2	16.5 W
911401895687	DN150B LED21S/830_840 PSD WH G2	18 W
911401895887	DN150X LED21S/830_840 WIA WH G2	17.5 W

Order Code	Full Product Name	Power Consumption
911401895387	DN150B LED11S/830_840 PSU WH G2	9.5 W
911401895587	DN150B LED11S/830_840 PSD WH G2	10 W
911401895787	DN150X LED11S/830_840 WIA WH G2	10 W

## Controls and Dimming

## GreenSpace Slim Downlight G2

Order Code	Full Product Name	Dimmable	Maximum dim level
911401895287	DN150B LED7S/830_840 PSU WH G2	-	Not applicable
911401895487	DN150B LED21S/830_840 PSU WH G2	-	Not applicable
911401895687	DN150B LED21S/830_840 PSD WH G2	DALI	1%

Order Code	Full Product Name	Dimmable	Maximum dim level
911401895887	DN150X LED21S/830_840 WIA WH G2	Wireless Dim	1%
911401895387	DN150B LED11S/830_840 PSU WH G2	-	Not applicable
911401895587	DN150B LED11S/830_840 PSD WH G2	DALI	1%
911401895787	DN150X LED11S/830_840 WIA WH G2	Wireless Dim	1%

