



Product Description

MHN-TD

Double-envelope, single- or double-ended Metal halide lamps

Benefits

- All types are UV-Block for reduced health and fading risks
- All types are UV-Block for reduced health and fading risks

Features

- Quartz discharge tube containing high-pressure mercury and a mixture of dysprosium, holmium and thulium halides (4200 K) or tin iodide (3000 K), with sodium and thallium added for color correction and arc stabilization
- Quartz discharge tube containing high-pressure mercury and a mixture of dysprosium, holmium and thulium halides (MHN-TD) or tin iodide (MHW-TD), with sodium and thallium added for colour correction and arc stabilisation
- Double-ended lamps housed in a tubular clear UV-Block quartz evacuated outer envelope
- Double-ended lamps housed in a tubular clear UV-Block quartz evacuated outer envelope
- Restricted burning position
- Restricted burning position

Application

- Indoors – accent lighting, general lighting in downlighters, e.g. in shops and malls
- Indoors – accent lighting, general lighting in downlighters, e.g. in shops and malls
- Downlighters, uplighters and wall-washers, e.g. in shops and malls
- Downlighters, uplighters and wall-washers, e.g. in shops and malls
- Outdoors – floodlighting monuments, facades and billboards
- Outdoors – floodlighting monuments, facades and billboards

Warnings and Safety

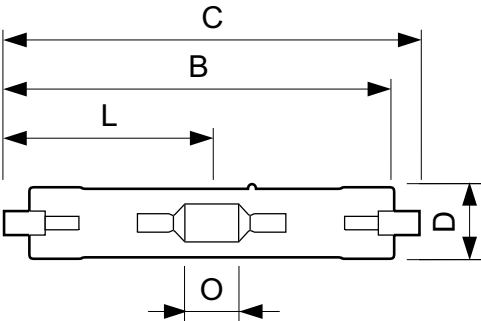
- Use only in totally enclosed luminaire, even during testing (IEC61167, IEC 62035, IEC60598)
- Use only in totally enclosed luminaire, even during testing (IEC61167, IEC 62035, IEC60598)
- The luminaire must be able to contain hot lamp parts if the lamp ruptures
- The luminaire must be able to contain hot lamp parts if the lamp ruptures
- Control gear must include end-of-life protection (IEC61167, IEC 62035)
- Control gear must include end-of-life protection (IEC61167, IEC 62035)
- A lamp breaking is extremely unlikely to have any impact on your health. If a lamp breaks, ventilate the room for 30 minutes and remove the parts, preferably with gloves. Put them in a sealed plastic bag and take it to your local waste facilities for recycling. Do not use a vacuum cleaner.
- A lamp breaking is extremely unlikely to have any impact on your health. If a lamp breaks, ventilate the room for 30 minutes and remove the parts, preferably with gloves. Put them in a sealed plastic bag and take it to your local waste facilities for recycling. Do not use a vacuum cleaner.

Versions



LPPR_MHN-TD_RX7s-Product photo

Dimensional drawing



Product	D (max)	D	O	C (max)
MHN-TD 150W/842 RX7s 1CT/12	23.0 mm	0.89 inch	17.8 mm	135.4 mm

