



# Product Description

## MASTER MHN-FC

Compact quartz metal halide lamps with double pinch

### Benefits

- Allows compact luminaire systems with precision optics for minimal light spill
- Good color rendering creates a pleasant ambience with high visual comfort for players and spectators
- Continuous spectral distribution offers options for semi-professional stadiums and area lighting

### Features

- Double-pinch concept results in long lifetime
- Choice of 1000 W and 2000 W types
- Natural white color appearance
- Compact light source allows small luminaire design

### Application

- Recreational sports and area floodlighting

### Warnings and Safety

- Use only in totally enclosed luminaire, even during testing (IEC61167, IEC 62035, IEC60598)
- The luminaire must be able to contain hot lamp parts if the lamp ruptures
- A lamp breaking is extremely unlikely to have any impact on your health. If a lamp breaks, ventilate the room for 30 minutes and remove the parts, preferably with gloves. Put them in a sealed plastic bag and take it to your local waste facilities for recycling. Do not use a vacuum cleaner.

# MASTER MHN-FC

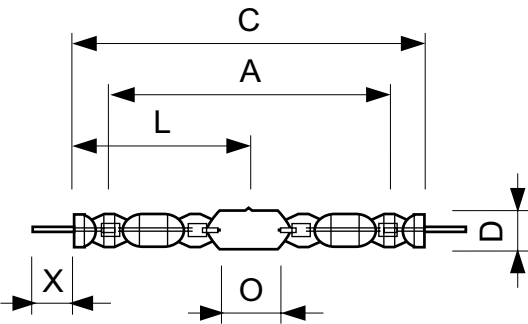
## Versions



LPPR MHN-FC 2000W 2200W

LPPR MHN-FC 1000W

## Dimensional drawing



Product	D (max)	D	O	X	L	A	C (max)
MASTER MHN-FC 1000W/740 230V XW	33 mm	25.5 mm	42.5 mm	58 mm	144 mm	226 mm	290 mm
MASTER MHN-FC 2000W/740 400V XW	33 mm	25.5 mm	108 mm	58 mm	177 mm	290 mm	357 mm
MASTER MHN-FC 2200W/640 400V XW	33 mm	25.5 mm	108 mm	58 mm	177 mm	290 mm	476 mm

General Information	
Cap-Base	Double Ended
Operating Position	P5
Light Technical	
Color Designation	White (WH)
Controls and Dimming	
Dimmable	No
Mechanical and Housing	
Bulb Finish	Clear

## Light Technical

Order Code	Full Product Name	Chromaticity Coordinate X (Nom)	Chromaticity Coordinate Y (Nom)	Correlated Color Temperature (Nom)	Color rendering index (CRI)	Luminous Efficacy (rated) (Nom)
928070405130	MASTER MHN-FC 2000W/740 400V XW	380	419	4200 K	60	102 lm/W
928079805130	MASTER MHN-FC 2200W/640 400V XW	382	400	4100 K	60	105 lm/W
928075705130	MASTER MHN-FC 1000W/740 230V XW	374	366	4100 K	65	91 lm/W

## Operating and Electrical

MASTER MHN-FC

Order Code	Full Product Name	Voltage (Nom)	Power Consumption
928070405130	MASTER MHN-FC 2000W/740 400V XW	222 V	2,050 W
928079805130	MASTER MHN-FC 2200W/640 400V XW	230 V	2,240.0 W

Order Code	Full Product Name	Voltage (Nom)	Power Consumption
928075705130	MASTER MHN-FC 1000W/740 230V XW	130 V	1,040.0 W

Approval and Application

Order Code	Full Product Name	Energy Consumption kWh/1000 h	Mercury (Hg) Content (Nom)
928070405130	MASTER MHN-FC 2000W/740 400V XW	2,235 kWh	105 mg
928079805130	MASTER MHN-FC 2200W/640 400V XW	2,464 kWh	103 mg

Order Code	Full Product Name	Energy Consumption kWh/1000 h	Mercury (Hg) Content (Nom)
928075705130	MASTER MHN-FC 1000W/740 230V XW	1,144 kWh	74 mg

