



## Product Description

### HID-HeavyDuty BSN semi-parallel for SON/CDO/MH/HPI

Encapsulated electromagnetic copper/iron ballasts for use with an external semi-parallel ignitor for CDM, CDO, MH, HPI (Plus) and SON lamps (no ignitor needed for SON-I lamps)

#### Benefits

- Excellent resistance to chemical impact, humid conditions and environmental stress crack
- Long-lasting reliable solution – outstanding product lifetime of 15 years average
- Minimal watt losses thanks to orthocyclic winding process
- Control gear can be installed remotely

#### Features

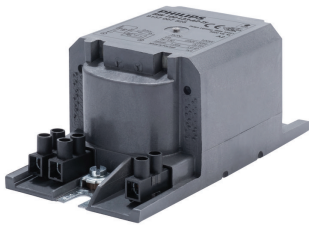
- Encapsulated with thermoplastic polyester resin, reinforced with glass fiber
- Equipped with screw terminal blocks as standard; insert contacts available upon request
- Ballasts for alternative mains voltages/frequencies available upon request
- Separate earth terminal (HID 'Heavy Duty')

#### Application

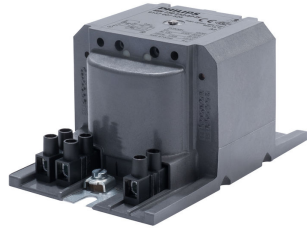
- Ideal for the following applications:
- Outdoor: tunnels and parking areas
- Outside luminaire: in the pole or electrical cabinet
- Road and residential lighting
- Area lighting, e.g. harbors, building sites, city centers, shopping centers, pedestrian areas
- Climatic suitability: use in luminaires under normal humidity conditions (not drip-proof)

# HID-HeavyDuty BSN semi-parallel for SON/CDO/MH/HPI

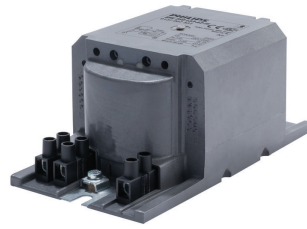
## Versions



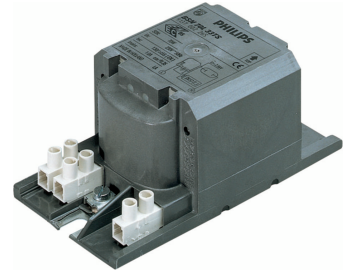
BSN 100 L33-A2-TS 230V



BSN 150 L33-A2-TS 230V

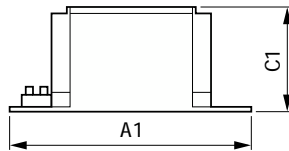
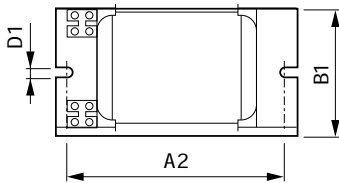
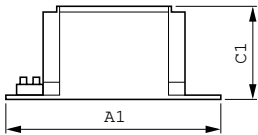
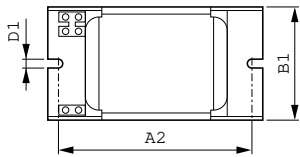


BSN 250 L33-A2-TS 230V



GPPR BSN-HD PHL

## Dimensional drawing



| Product                                | D1     | C1      | A1       | A2       | B1       |
|--|--------|---------|----------|----------|----------|
| BSN 400 L33-A2-TS 230V 50Hz<br>HD3-166 | 6.2 mm | 84.0 mm | 166.0 mm | 147.5 mm | 102.0 mm |
| BSN 70 L33-A2-TS 230V 50Hz<br>HD1-118  | 6.2 mm | 53.0 mm | 118.0 mm | 103.0 mm | 65.0 mm  |

| Product                     | A1     | A2     | B1    | C1    | D1     |
|-----------------------------|--------|--------|-------|-------|--------|
| BSN 100 L33-A2-TS 230V 50Hz | 123 mm | 108 mm | 65 mm | 53 mm | 6.2 mm |
| BSN 150 L33-A2-TS 230V 50Hz | 126 mm | 108 mm | 81 mm | 66 mm | 6.2 mm |
| BSN 250 L33-A2-TS 230V 50Hz | 151 mm | 132 mm | 81 mm | 66 mm | 6.2 mm |

