

Long-lasting, reliable solution

HID-Basic BSN/BMH MK4 semi-parallel for SON/CDO/CDM/MH/HPI

Impregnated electromagnetic copper ballasts for use with an external semi-parallel ignitor for CDM, CDO, MH, HPI (Plus) and SON lamps

Benefits

- System design: one ignitor SKD578 can trigger all lamps from 35 to 600 W
- Long-lasting reliable solution protected from overheating; better for hot environments than its predecessors; extended warranty
- Minimal watt losses thanks to orthocyclic winding process

Features

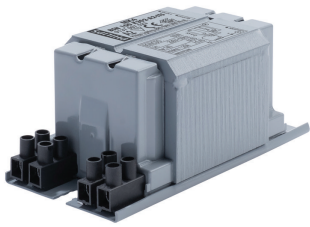
- Improved thermal features – much cooler ballast
- All ballasts are equipped with ThermoSwitch for protection against end-of-lamp-life phenomena
- Ballast can also be used in combination with series (superimposed) ignitor
- Equipped with screw terminal blocks as standard; insert contacts available upon request
- Ballasts for alternative mains voltages/frequencies available upon request

Application

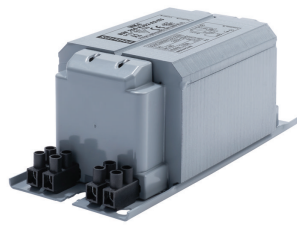
- Outdoor lighting
- Horticulture

HID-Basic BSN/BMH MK4 semi-parallel for SON/CDO/CDM/MH/HPI

Versions



BSN 100 K302-A2-ITS 230V

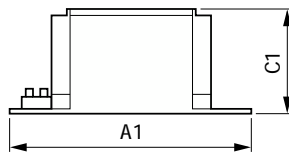
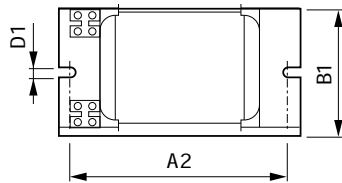
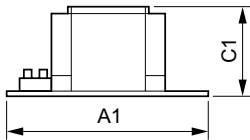
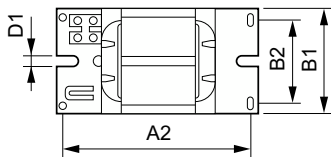


BSN 250 K302-A2-ITS 230V



GPPR BSN-BC4H 0002

Dimensional drawing



Product	D1	C1	A1	A2	B1	B2
BSN 400 K407-A2-ITS 230/240V 50Hz BC3	6.5 mm	83.0 mm	166.0 mm	145.0 mm	97.0 mm	78.5 mm

Product	A1	A2	B1	C1	D1
BSN 100 K302-A2-ITS 230V 50Hz	123 mm	98 mm	61 mm	52 mm	6.2 mm
BSN 250 K302-A2-ITS 230V 50Hz	160 mm	139 mm	76 mm	65 mm	6.2 mm



HID-Basic BSN/BMH MK4 semi-parallel for SON/CDO/CDM/MH/HPI

Operating and Electrical

Input Frequency	50 Hz
Line Frequency	50 Hz

Operating and Electrical

Order Code	Full Product Name	Input Voltage
74086600	BSN 100 K302-A2-ITS 230V 50Hz	230 V
74102300	BSN 250 K302-A2-ITS 230V 50Hz	230 V

Order Code	Full Product Name	Input Voltage
88704400	BSN 400 K407-ITS 230/240V 50Hz BC3-166	230 V (default) or 240 V

