



# When light addresses the needs of cleanroom

## GreenPerform Teardrop G3

Greenperform Teardrop CR388C G3 is an affordable but with high system efficacy cleanroom batten. By means of its slim and streamlined design, it perfectly reduces the dust collection on the housing. Thanks to its max 150lm/w system efficacy, it delivers higher energy saving for the customer. In addition, CR388C G3 provides easy connection for continuous installation. Dali interface and CRI90 are provided by this family to further extend the availability for control interface and visual comfort. CR388C G3 is a decent product for newly installed cleanroom and retrofit cleanroom projects as well.

### Benefits

- More energy saving due to high lm/w system efficacy
- Less dust collection on the housing
- System interface with higher CRI available for easy control function and visual comfort
- Easy and quick installation on-site

### Features

- Max 150lm/w system efficacy
- Slim and streamlined housing design
- Dali and CRI90 are offered
- Quick connector for continuous installation

### Application

- Electronics or semi conductor industry cleanroom

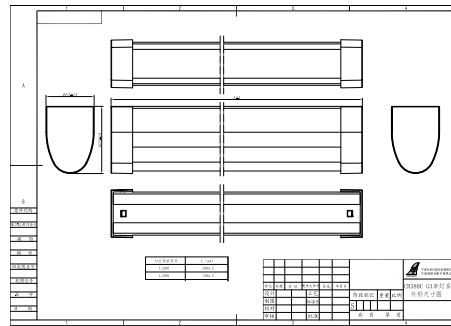
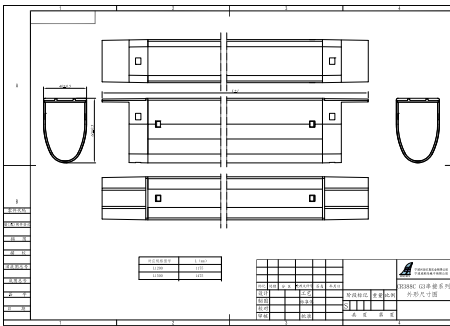
### Specifications

# GreenPerform Teardrop G3

<b>Mounting type</b>	Ceiling
<b>Operating Temperature range</b>	0 to +35°C
<b>Light Source</b>	LED
<b>Mains Voltage</b>	220-240V/50-60Hz
<b>Dimming</b>	PSU PSD
<b>Control system input</b>	DALI
<b>Main color of the luminaire</b>	White Yellow for Amber version
<b>Lumen maintenance at median useful life</b>	L70B50 50.000h

<b>Flicker / Pst / SVM</b>	PST<0.5, MD<3.2%, SVM<1
<b>Luminous flux</b>	1700lm~8000lm
<b>Luminaire efficacy</b>	up to 150lm/W
<b>Correlated color temperature - CCT</b>	Amber/4000K/5000K
<b>Color Rendering index - CRI</b>	80
<b>Mechanical impact protection</b>	IK03
<b>Ingress protection</b>	IP40
<b>Driver replaceable</b>	No
<b>Overall length</b>	1200mm/1500mm
<b>Installation</b>	Ceiling

## Dimensional drawing



# GreenPerform Teardrop G3

## General Information

Driver included	Yes
Number of gear units	1 unit
<b>Light Technical</b>	
Beam angle of light source	120 degree(s)
Color rendering index (CRI)	>80
Optic type	Wide beam
<b>Operating and Electrical</b>	
Protection class IEC	Safety class I
Input Voltage	220 to 240 V
Line Frequency	50 or 60 Hz
Suitable for random switching	Yes
<b>Mechanical and Housing</b>	
Optical cover type	Polycarbonate
Housing Color	White RAL 9003
Mech. impact protection code	IK03
Ingress protection code	IP40
<b>Approval and Application</b>	
Ambient temperature range	0 to +35 °C
CE mark	Yes
ENEC mark	-
Flammability mark	-
Glow-wire test	-
<b>Initial Performance (IEC Compliant)</b>	
Luminous flux tolerance	+/-10%

## General Information

Order Code	Full Product Name	Gear
911401510344	CR388C G3 LED80/840 L150	EB
911401510644	CR388C G3 LED80/850 L150	EB
911401510944	CR388C G3 LED80/840 L150 PSD	EBD
911401511244	CR388C G3 LED80/850 L150 PSD	EBD
911401511744	CR388C G3 LED80/840 L150 CD	EB
911401512044	CR388C G3 LED80/850 L150 CD	EB
911401511344	CR388C G3 LED17/Amber L120	EB
911401511444	CR388C G3 LED33/Amber L120	EB
911401512144	CR388C G3 LED17/Amber L120 CD	EB
911401512244	CR388C G3 LED33/Amber L120 CD	EB
911401510144	CR388C G3 LED22/840 L120	EB
911401510244	CR388C G3 LED45/840 L120	EB
911401510444	CR388C G3 LED22/850 L120	EB
911401510544	CR388C G3 LED45/850 L120	EB
911401510744	CR388C G3 LED22/840 L120 PSD	EBD
911401510844	CR388C G3 LED42/840 L120 PSD	EBD
911401511044	CR388C G3 LED22/850 L120 PSD	EBD
911401511144	CR388C G3 LED42/850 L120 PSD	EBD
911401511544	CR388C G3 LED22/840 L120 CD	EB
911401511644	CR388C G3 LED45/840 L120 CD	EB
911401511844	CR388C G3 LED22/850 L120 CD	EB
911401511944	CR388C G3 LED45/850 L120 CD	EB

## Light Technical

Order Code	Full Product Name	Correlated Color Temperature (Nom)	Luminous Efficacy (rated) (Nom)	Luminous Flux	Number of light sources
911401510344	CR388C G3 LED80/840 L150	4000 K	153 lm/W	8,000 lm	272
911401510644	CR388C G3 LED80/850 L150	5000 K	153 lm/W	8,000 lm	272
911401510944	CR388C G3 LED80/840 L150 PSD	4000 K	140 lm/W	8,000 lm	272
911401511244	CR388C G3 LED80/850 L150 PSD	5000 K	140 lm/W	8,000 lm	272
911401511744	CR388C G3 LED80/840 L150 CD	4000 K	153 lm/W	8,000 lm	272
911401512044	CR388C G3 LED80/850 L150 CD	5000 K	153 lm/W	8,000 lm	272

Order Code	Full Product Name	Correlated Color Temperature (Nom)	Luminous Efficacy (rated) (Nom)	Luminous Flux	Number of light sources
911401511344	CR388C G3 LED17/Amber L120	-	92 lm/W	1,750 lm	98
911401511444	CR388C G3 LED33/Amber L120	-	92 lm/W	3,300 lm	188
911401512144	CR388C G3 LED17/Amber L120 CD	-	92 lm/W	1,750 lm	98
911401512244	CR388C G3 LED33/Amber L120 CD	-	92 lm/W	3,300 lm	188
911401510144	CR388C G3 LED22/840 L120	4000 K	150 lm/W	2,250 lm	80
911401510244	CR388C G3 LED45/840 L120	4000 K	150 lm/W	4,500 lm	156

# GreenPerform Teardrop G3

Order Code	Full Product Name	Correlated Color Temperature (Nom)	Luminous Efficacy (rated) (Nom)	Luminous Flux	Number of light sources
911401510444	CR388C G3 LED22/850 L120	5000 K	150 lm/W	2,250 lm	80
911401510544	CR388C G3 LED45/850 L120	5000 K	150 lm/W	4,500 lm	156
911401510744	CR388C G3 LED22/840 L120 PSD	4000 K	140 lm/W	2,240 lm	80
911401510844	CR388C G3 LED42/840 L120 PSD	4000 K	140 lm/W	4,200 lm	156
911401511044	CR388C G3 LED22/850 L120 PSD	5000 K	140 lm/W	2,240 lm	80
911401511144	CR388C G3 LED42/850 L120 PSD	5000 K	140 lm/W	4,200 lm	156

Order Code	Full Product Name	Correlated Color Temperature (Nom)	Luminous Efficacy (rated) (Nom)	Luminous Flux	Number of light sources
911401511544	CR388C G3 LED22/840 L120 CD	4000 K	150 lm/W	2,250 lm	80
911401511644	CR388C G3 LED45/840 L120 CD	4000 K	150 lm/W	4,500 lm	156
911401511844	CR388C G3 LED22/850 L120 CD	5000 K	150 lm/W	2,250 lm	80
911401511944	CR388C G3 LED45/850 L120 CD	5000 K	150 lm/W	4,500 lm	156

## Operating and Electrical

Order Code	Full Product Name	Power Consumption
911401510344	CR388C G3 LED80/840 L150	52 W
911401510644	CR388C G3 LED80/850 L150	52 W
911401510944	CR388C G3 LED80/840 L150 PSD	57 W
911401511244	CR388C G3 LED80/850 L150 PSD	57 W
911401511744	CR388C G3 LED80/840 L150 CD	52 W
911401512044	CR388C G3 LED80/850 L150 CD	52 W
911401511344	CR388C G3 LED17/Amber L120	19 W
911401511444	CR388C G3 LED33/Amber L120	36 W
911401512144	CR388C G3 LED17/Amber L120 CD	19 W
911401512244	CR388C G3 LED33/Amber L120 CD	36 W
911401510144	CR388C G3 LED22/840 L120	15 W

Order Code	Full Product Name	Power Consumption
911401510244	CR388C G3 LED45/840 L120	30 W
911401510444	CR388C G3 LED22/850 L120	15 W
911401510544	CR388C G3 LED45/850 L120	30 W
911401510744	CR388C G3 LED22/840 L120 PSD	16 W
911401510844	CR388C G3 LED42/840 L120 PSD	30 W
911401511044	CR388C G3 LED22/850 L120 PSD	16 W
911401511144	CR388C G3 LED42/850 L120 PSD	30 W
911401511544	CR388C G3 LED22/840 L120 CD	15 W
911401511644	CR388C G3 LED45/840 L120 CD	30 W
911401511844	CR388C G3 LED22/850 L120 CD	15 W
911401511944	CR388C G3 LED45/850 L120 CD	30 W

## Controls and Dimming

Order Code	Full Product Name	Dimmable	Maximum dim level
911401510344	CR388C G3 LED80/840 L150	-	Not applicable
911401510644	CR388C G3 LED80/850 L150	-	Not applicable
911401510944	CR388C G3 LED80/840 L150 PSD	DALI	10% (depends on dimmer, ELV)
911401511244	CR388C G3 LED80/850 L150 PSD	DALI	10% (depends on dimmer, ELV)
911401511744	CR388C G3 LED80/840 L150 CD	-	Not applicable
911401512044	CR388C G3 LED80/850 L150 CD	-	Not applicable
911401511344	CR388C G3 LED17/Amber L120	-	Not applicable
911401511444	CR388C G3 LED33/Amber L120	-	Not applicable
911401512144	CR388C G3 LED17/Amber L120 CD	-	Not applicable
911401512244	CR388C G3 LED33/Amber L120 CD	-	Not applicable
911401510144	CR388C G3 LED22/840 L120	-	Not applicable

Order Code	Full Product Name	Dimmable	Maximum dim level
911401510244	CR388C G3 LED45/840 L120	-	Not applicable
911401510444	CR388C G3 LED22/850 L120	-	Not applicable
911401510544	CR388C G3 LED45/850 L120	-	Not applicable
911401510744	CR388C G3 LED22/840 L120 PSD	DALI	10% (depends on dimmer, ELV)
911401510844	CR388C G3 LED42/840 L120 PSD	DALI	10% (depends on dimmer, ELV)
911401511044	CR388C G3 LED22/850 L120 PSD	DALI	10% (depends on dimmer, ELV)
911401511144	CR388C G3 LED42/850 L120 PSD	DALI	10% (depends on dimmer, ELV)
911401511544	CR388C G3 LED22/840 L120 CD	-	Not applicable
911401511644	CR388C G3 LED45/840 L120 CD	-	Not applicable

# GreenPerform Teardrop G3

Order Code	Full Product Name	Dimmable	Maximum dim level
911401511844	CR388C G3 LED22/850 L120 CD	-	Not applicable

Order Code	Full Product Name	Dimmable	Maximum dim level
911401511944	CR388C G3 LED45/850 L120 CD	-	Not applicable

## Initial Performance (IEC Compliant)

Order Code	Full Product Name	Initial chromaticity
911401510344	CR388C G3 LED80/840 L150	8000
911401510644	CR388C G3 LED80/850 L150	8000
911401510944	CR388C G3 LED80/840 L150 PSD	8000
911401511244	CR388C G3 LED80/850 L150 PSD	8000
911401511744	CR388C G3 LED80/840 L150 CD	8000
911401512044	CR388C G3 LED80/850 L150 CD	8000
911401511344	CR388C G3 LED17/Amber L120	1750
911401511444	CR388C G3 LED33/Amber L120	3300
911401512144	CR388C G3 LED17/Amber L120 CD	1750
911401512244	CR388C G3 LED33/Amber L120 CD	3300
911401510144	CR388C G3 LED22/840 L120	2250

Order Code	Full Product Name	Initial chromaticity
911401510244	CR388C G3 LED45/840 L120	4500
911401510444	CR388C G3 LED22/850 L120	2250
911401510544	CR388C G3 LED45/850 L120	4500
911401510744	CR388C G3 LED22/840 L120 PSD	2240
911401510844	CR388C G3 LED42/840 L120 PSD	4200
911401511044	CR388C G3 LED22/850 L120 PSD	2240
911401511144	CR388C G3 LED42/850 L120 PSD	4200
911401511544	CR388C G3 LED22/840 L120 CD	2250
911401511644	CR388C G3 LED45/840 L120 CD	4500
911401511844	CR388C G3 LED22/850 L120 CD	2250
911401511944	CR388C G3 LED45/850 L120 CD	4500

