

# Direct View Pixel Luminaires for Creative Architectural and Media Façade Applications

## UniString

UniString is a surface-mounted, exterior-rated and compact-sized architectural LED direct view string that is designed for architectural and media façade outdoor lighting applications. The robust mechanical design, easy installation and unique optical lenses make UniString ideal for buildings/media facades, bridges, arenas, theatres, amusement parks and recreational centres. Available in white, monochromatic colours, RGB, RGBW and tunable white. Available in symmetrical and asymmetrical optical distributions with DMX control option to give architects and designers the freedom to explore a wide range of concepts and design with no limitations.

### Benefits

- Available in three sizes and three power ranges to fit any application requirements.
- Robust Design & IP66 rating for outdoor use.
- Asymmetric beam option available to provide higher efficiency, better visual clearance and reduce lighting pollution in tall buildings and towers
- Through wiring for power and DMX data via IP67 connectors
- Available in track and surface mounting options

# UniString

## Features

- Standard: RGBW, RGB, 2700K, 3000K and 4000K
- Optional 5000K, Monochromatic Colors and Tunable Wh
- Standard pixel pitch of 125mm (center-to-center) for small and medium sizes
- Standard pixel pitch of 200mm (center-to-center) for large size
- Customized mounting tracks available (sold separately)

## Application

- Bridges, Monuments, Facades
- Landscape
- Parks and Plazas

## Warnings and Safety

- For outdoor use only

## Versions



159A0723



159A0835



159A0821



159A0794



159A0345



159A0361



159A0249



159A0644

# UniString

## Versions

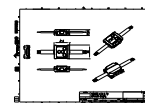
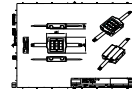
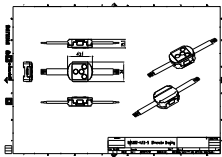
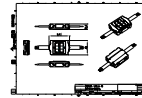
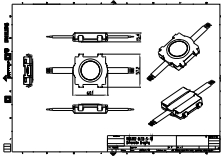


159A0652

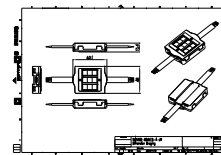
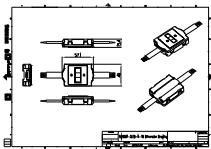
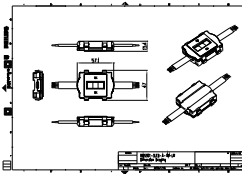
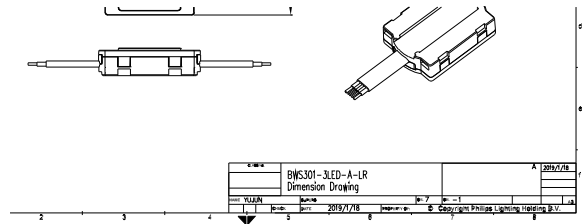
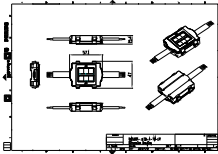
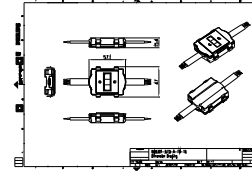
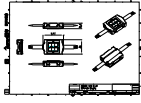


159A0659

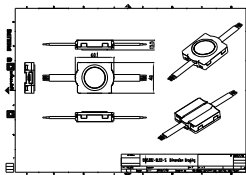
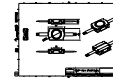
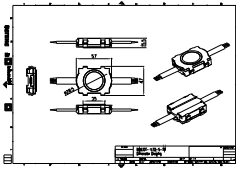
## Dimensional drawing



Dimensional drawing



Dimensional drawing



General Information

Driver included	No
Light source replaceable	No

Light Technical

Color rendering index (CRI)	80
-----------------------------	----

Controls and Dimming

Dimmable	No
----------	----

Mechanical and Housing

Optical cover type	Polycarbonate bowl/cover clear
Housing Color	Black
Mech. impact protection code	IK06
Ingress protection code	IP66

Approval and Application

CE mark	Yes
Flammability mark	For mounting on normally flammable surfaces
Glow-wire test	Temperature 750 °C, duration 30 s

Light Technical

Order Code	Full Product Name	Luminaire light beam spread	Light source color	Correlated Color Temperature (Nom)		Luminous Flux
911401754042	BWS302 8LED 27K 24V A TB N10P20	85° x 110°	Warm white	2700 K		126 lm
911401754122	BWS302 8LED 30K 24V A TB N10P20	85° x 110°	Warm white	3000 K		126 lm
911401754202	BWS302 8LED 40K 24V A TB N10P20	85° x 110°	Neutral white	4000 K		134 lm
911401753372	BWS301 6LED 27K 24V S TM N16P12	110° x 110°	Warm white	2700 K		101 lm
911401753412	BWS301 6LED 30K 24V S TM N16P12	110° x 110°	Warm white	3000 K		101 lm
911401753452	BWS301 6LED 40K 24V S TM N16P12	110° x 110°	Neutral white	4000 K		108 lm
911401753082	BWS301 3LED 27K 15V A LR N16P12	85° x 110°	Warm white	2700 K		51 lm
911401753162	BWS301 3LED 30K 15V A LR N16P12	85° x 110°	Warm white	3000 K		51 lm
911401753242	BWS301 3LED 40K 15V A LR N16P12	85° x 110°	Neutral white	4000 K		55 lm
911401752922	BWS300 4LED 27K 15V S N16P12	110° x 110°	Warm white	2700 K		67 lm
911401752962	BWS300 4LED 30K 15V S N16P12	110° x 110°	Warm white	3000 K		67 lm

Order Code	Full Product Name	Luminaire light beam spread	Light source color	Correlated Color		Luminous Flux
				Temperature (Nom)		
911401753002	BWS300 4LED 40K 15V S N16P12	110° x 110°	Neutral white	4000 K		71 lm
911401753522	BWS301 6LED 27K 24V A LR N16P12	85° x 110°	Warm white	2700 K		87 lm
911401753602	BWS301 6LED 30K 24V A LR N16P12	85° x 110°	Warm white	3000 K		87 lm
911401753682	BWS301 6LED 40K 24V A LR N16P12	85° x 110°	Neutral white	4000 K		92 lm
911401753362	BWS301 6LED 27K 24V S N16P12	110° x 110°	Warm white	2700 K		101 lm
911401753402	BWS301 6LED 30K 24V S N16P12	110° x 110°	Warm white	3000 K		101 lm
911401753442	BWS301 6LED 40K 24V S N16P12	110° x 110°	Neutral white	4000 K		108 lm
911401753852	BWS302 8LED 27K 24V S TM N10P20	110° x 110°	Warm white	2700 K		142 lm
911401753892	BWS302 8LED 30K 24V S TM N10P20	110° x 110°	Warm white	3000 K		142 lm
911401753932	BWS302 8LED 40K 24V S TM N10P20	110° x 110°	Neutral white	4000 K		151 lm
911401752932	BWS300 4LED 27K 15V S TM N16P12	110° x 110°	Warm white	2700 K		67 lm
911401752972	BWS300 4LED 30K 15V S TM N16P12	110° x 110°	Warm white	3000 K		67 lm
911401753012	BWS300 4LED 40K 15V S TM N16P12	110° x 110°	Neutral white	4000 K		71 lm
911401753122	BWS301 3LED 27K 15V A TB N16P12	85° x 110°	Warm white	2700 K		51 lm
911401753202	BWS301 3LED 30K 15V A TB N16P12	85° x 110°	Warm white	3000 K		51 lm
911401753282	BWS301 3LED 40K 15V A TB N16P12	85° x 110°	Neutral white	4000 K		55 lm
911401753842	BWS302 8LED 27K 24V S N10P20	110° x 110°	Warm white	2700 K		142 lm
911401753882	BWS302 8LED 30K 24V S N10P20	110° x 110°	Warm white	3000 K		142 lm
911401753922	BWS302 8LED 40K 24V S N10P20	110° x 110°	Neutral white	4000 K		151 lm
911401754052	BWS302 8LED 27K 24V A TM TB N10P20	85° x 110°	Warm white	2700 K		126 lm
911401754132	BWS302 8LED 30K 24V A TM TB N10P20	85° x 110°	Warm white	3000 K		126 lm
911401754212	BWS302 8LED 40K 24V A TM TB N10P20	85° x 110°	Neutral white	4000 K		134 lm
911401753572	BWS301 6LED 27K 24V A TM TB N16P12	85° x 110°	Warm white	2700 K		87 lm
911401753652	BWS301 6LED 30K 24V A TM TB N16P12	85° x 110°	Warm white	3000 K		87 lm
911401753732	BWS301 6LED 40K 24V A TM TB N16P12	85° x 110°	Neutral white	4000 K		92 lm

Order Code	Full Product Name	Luminaire light beam spread	Light source color	Correlated Color		Luminous Flux
				Temperature (Nom)		
911401754002	BWS302 8LED 27K 24V A LR N10P20	85° x 110°	Warm white	2700 K		126 lm
911401754082	BWS302 8LED 30K 24V A LR N10P20	85° x 110°	Warm white	3000 K		126 lm
911401754162	BWS302 8LED 40K 24V A LR N10P20	85° x 110°	Neutral white	4000 K		134 lm
911401753562	BWS301 6LED 27K 24V A TB N16P12	85° x 110°	Warm white	2700 K		87 lm
911401753642	BWS301 6LED 30K 24V A TB N16P12	85° x 110°	Warm white	3000 K		87 lm
911401753722	BWS301 6LED 40K 24V A TB N16P12	85° x 110°	Neutral white	4000 K		92 lm
911401753132	BWS301 3LED 27K 15V A TM TB N16P12	85° x 110°	Warm white	2700 K		51 lm
911401753212	BWS301 3LED 30K 15V A TM TB N16P12	85° x 110°	Warm white	3000 K		51 lm
911401753292	BWS301 3LED 40K 15V A TM TB N16P12	85° x 110°	Neutral white	4000 K		55 lm
911401753092	BWS301 3LED 27K 15V A TM LR N16P12	85° x 110°	Warm white	2700 K		51 lm
911401753172	BWS301 3LED 30K 15V A TM LR N16P12	85° x 110°	Warm white	3000 K		51 lm
911401753252	BWS301 3LED 40K 15V A TM LR N16P12	85° x 110°	Neutral white	4000 K		55 lm
911401753532	BWS301 6LED 27K 24V A TM LR N16P12	85° x 110°	Warm white	2700 K		87 lm
911401753612	BWS301 6LED 30K 24V A TM LR N16P12	85° x 110°	Warm white	3000 K		87 lm
911401753692	BWS301 6LED 40K 24V A TM LR N16P12	85° x 110°	Neutral white	4000 K		92 lm

Operating and Electrical

Order Code	Full Product Name	Power Consumption	Order Code	Full Product Name	Power Consumption
911401754042	BWS302 8LED 27K 24V A TB N10P20	20 W	911401753402	BWS301 6LED 30K 24V S N16P12	24 W
911401754122	BWS302 8LED 30K 24V A TB N10P20	20 W	911401753442	BWS301 6LED 40K 24V S N16P12	24 W
911401754202	BWS302 8LED 40K 24V A TB N10P20	20 W	911401753852	BWS302 8LED 27K 24V S TM N10P20	20 W
911401753372	BWS301 6LED 27K 24V S TM N16P12	24 W	911401753892	BWS302 8LED 30K 24V S TM N10P20	20 W
911401753412	BWS301 6LED 30K 24V S TM N16P12	24 W	911401753932	BWS302 8LED 40K 24V S TM N10P20	20 W
911401753452	BWS301 6LED 40K 24V S TM N16P12	24 W	911401752932	BWS300 4LED 27K 15V S TM N16P12	16 W
911401753082	BWS301 3LED 27K 15V A LR N16P12	16 W	911401752972	BWS300 4LED 30K 15V S TM N16P12	16 W
911401753162	BWS301 3LED 30K 15V A LR N16P12	16 W	911401753012	BWS300 4LED 40K 15V S TM N16P12	16 W
911401753242	BWS301 3LED 40K 15V A LR N16P12	16 W	911401753122	BWS301 3LED 27K 15V A TB N16P12	16 W
911401752922	BWS300 4LED 27K 15V S N16P12	16 W	911401753202	BWS301 3LED 30K 15V A TB N16P12	16 W
911401752962	BWS300 4LED 30K 15V S N16P12	16 W	911401753282	BWS301 3LED 40K 15V A TB N16P12	16 W
911401753002	BWS300 4LED 40K 15V S N16P12	16 W	911401753842	BWS302 8LED 27K 24V S N10P20	20 W
911401753522	BWS301 6LED 27K 24V A LR N16P12	24 W	911401753882	BWS302 8LED 30K 24V S N10P20	20 W
911401753602	BWS301 6LED 30K 24V A LR N16P12	24 W	911401753922	BWS302 8LED 40K 24V S N10P20	20 W
911401753682	BWS301 6LED 40K 24V A LR N16P12	24 W	911401754052	BWS302 8LED 27K 24V A TM TB N10P20	20 W
911401753362	BWS301 6LED 27K 24V S N16P12	24 W	911401754132	BWS302 8LED 30K 24V A TM TB N10P20	20 W

Order Code	Full Product Name	Power Consumption
911401754212	BWS302 8LED 40K 24V A TM TB N10P20	20 W
911401753572	BWS301 6LED 27K 24V A TM TB N16P12	24 W
911401753652	BWS301 6LED 30K 24V A TM TB N16P12	24 W
911401753732	BWS301 6LED 40K 24V A TM TB N16P12	24 W
911401754002	BWS302 8LED 27K 24V A LR N10P20	20 W
911401754082	BWS302 8LED 30K 24V A LR N10P20	20 W
911401754162	BWS302 8LED 40K 24V A LR N10P20	20 W
911401753562	BWS301 6LED 27K 24V A TB N16P12	24 W
911401753642	BWS301 6LED 30K 24V A TB N16P12	24 W
911401753722	BWS301 6LED 40K 24V A TB N16P12	24 W

Order Code	Full Product Name	Power Consumption
911401753132	BWS301 3LED 27K 15V A TM TB N16P12	16 W
911401753212	BWS301 3LED 30K 15V A TM TB N16P12	16 W
911401753292	BWS301 3LED 40K 15V A TM TB N16P12	16 W
911401753092	BWS301 3LED 27K 15V A TM LR N16P12	16 W
911401753172	BWS301 3LED 30K 15V A TM LR N16P12	16 W
911401753252	BWS301 3LED 40K 15V A TM LR N16P12	16 W
911401753532	BWS301 6LED 27K 24V A TM LR N16P12	24 W
911401753612	BWS301 6LED 30K 24V A TM LR N16P12	24 W
911401753692	BWS301 6LED 40K 24V A TM LR N16P12	24 W

