



UltraEfficient and Versatile LED Floodlight

CraneMaster BVP662CR/BVP665CR

Philips CraneMaster LED BVP665CR/BVP662CR Floodlight is the new generation of flood light which is specifically designed for port crane masters. BVP665CR/BVP662CR delivers ultra efficiency and has compact but elegant design and versatile application for a wide range of Area and Port crane scenarios. It incorporates the latest LED light source, modular design architect. The luminaire driver in compact and robust housing that meets globally recognized safety standards. Its specially designed heatsink incorporates aesthetics and functionality to ensure excellent reliability. The streamlined silhouette incorporates the functionalities for the modular lighting system and is assembled in a visually balanced way. Its light is smartly engineered for a brighter and safer environment and meets the customer's expectation—a professional floodlight that provides out per-formed lighting solutions. Powered by the latest LED technology, this luminaire delivers superior performance not only in lighting distribution, but also brilliant modular level system control. It will bring you a sustainable growth with to a new level in the world.

Benefits

- Product comes in High Efficiency version for low carbon emissions and energy savings.
- 4 optics covers as much as of customer needs
- Connected and to be compatible with Interact platform.
- Appealing and sustainable design, and robust materials provide durability, robust quality and reliability against harsh environments.

CraneMaster BVP662CR/BVP665CR

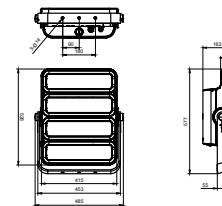
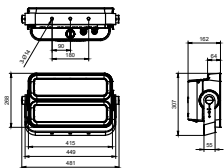
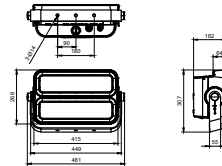
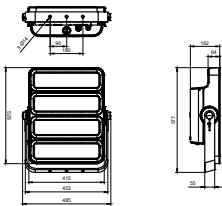
Features

- Higher system efficacy with 140lm/W @CRI80, CCT2700
- Full range of lumen packages up to 56,000 lumens
- 4 optics NB(15°)/S6(22°)/SMB(45°)/SWB(60°)
- Less weight compared to old gen product 23% down
- High quality ADC1 diecast aluminum housing and 316 steel bracket
- IP66 and IK08 protection
- 1M cycles vibration tests at 6G in X, Y and Z axis
- 50K hours lifetime (L70B50 @Ta=35°C)
- Certified operation at ambient temperature of 35°C
- 3-year warranty

Application

- Ports
- Port crane

Dimensional drawing



CraneMaster BVP662CR/BVP665CR

