



# OptiVision LED gen3.5 –Smart area and recreational sports lighting

## OptiVision LED gen3.5

The OptiVision LED gen3.5 floodlighting system provides a complete lighting solution for the simplest through to the most complex area and recreational sports lighting applications. The high-efficiency floodlight comes with a single piece die cast housing, hosting 2 and 3 LED engines respectively, which also function with an external driver box – separate for use at a distance from the floodlight (BV), or pre-fixed onto the mounting bracket of the floodlight (HGB) for ease of installation and lower initial cost. It meets the highest performance standards, provides outstanding light, quality, uniformity and ensures safety and visual comfort.

### Benefits

- The wide range of optics ensure maximum optical efficiency and enables highly precise light distribution with minimum spill light
- 0-tilt allows for low sCx value for projects that want to re-use installed pole structures to minimize required investment. 0 tilt option further increases comfort and minimizes complaints on light trespass from residents
- When combined with controls or Interact Sports lighting management system, the floodlight enables additional energy savings (up to 65%) in different area lighting applications
- Equipped with Service tag, a QR-based identification system that makes each luminaire uniquely identifiable and provides maintenance, installation and spare part information

# OptiVision LED gen3.5

## Features

- Single piece pressure die cast housing, with a protection level of IP66 against dust and water
- Wide range of ambient temperature tolerance making it suitable for a variety of sports and area lighting applications
- Option to add additional accessories to have the best in class spill light, 0 tilt, glare and up-light control
- Single High-power driver with IP66 protection pressure die cast housing and 10kV surge protection
- Programmable DALI Driver making it suitable to connect to lighting management systems like Interact Sports

## Application

- Logistics areas (Ports)
- Apron lighting (Airports), Parking and Industrial areas
- Recreational sports lighting applications (Football, Hockey, Basketball, Golf, Tennis, etc)

## Versions



OptiVision LED gen3 5 BVP518 HGB PP



OptiVision gen3.5 3 modules

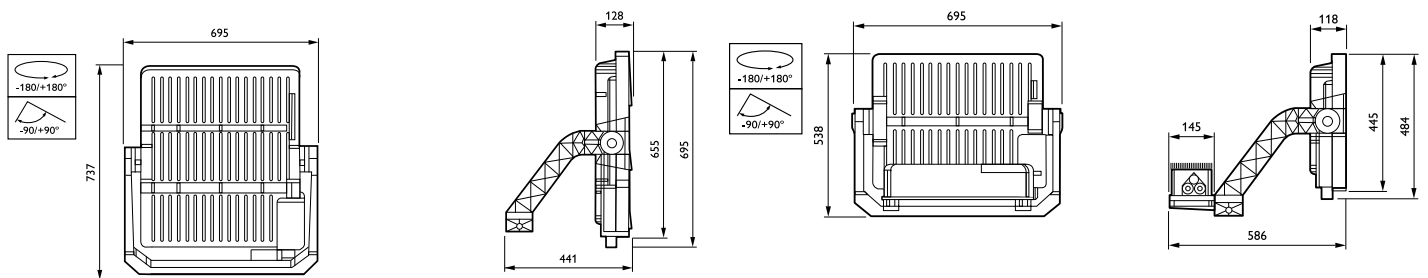


OptiVision LED gen3 5 BVP528 HGB PP



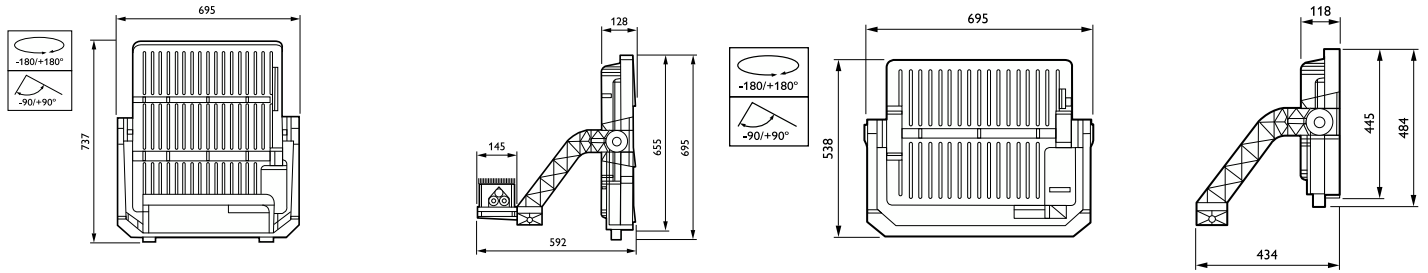
OptiVision LED gen3 5 BVP528 BV PP

## Dimensional drawing



# OptiVision LED gen3.5

## Dimensional drawing



General Information	
Driver included	Yes
Number of gear units	1 unit
Light Technical	
Upward light output ratio	0
Controls and Dimming	
Dimmable	Yes
Mechanical and Housing	
Housing Color	Aluminum
Mech. impact protection code	IK08
Ingress protection code	IP66
Standard tilt angle side entry	-
Approval and Application	
CE mark	Yes
Flammability mark	-

## General Information

Order Code	Full Product Name	Lamp family code	Service tag
912300060429	BVP518 1720/740 BV A35-WB D9 T35 OUT	LED1720	Yes
912300060432	BVP518 1720/757 BV A35-WB D9 T35 OUT	LED1720	Yes
912300060436	BVP518 1720/740 BV A65-WB D9 T35 OUT	LED1720	Yes
912300060431	BVP518 1720/740 HGB A35-WB D9 T35 OUT	LED1720	Yes
912300060882	BVP528 2830/757 PSD BV A35-WB D9 T25 OUT	LED2600	-
912300060883	BVP528 2830/757 PSD BV A35-NB D9 T25 OUT	LED2600	-
912300060884	BVP528 2830/757 PSD BV A35-XWB D9 T25OUT	LED2600	-
912300060440	BVP528 2590/740 HGB A35-WB D9 T35 OUT	LED2600	Yes
912300060439	BVP528 2590/740 BV A35-WB D9 T35 OUT LO	LED2600	Yes
912300060441	BVP528 2590/757 BV A35-WB D9 T35 OUT	LED2600	Yes
912300060445	BVP528 2590/740 BV A65-WB D9 T35 OUT	LED2600	Yes

## Light Technical (1/2)

Order Code	Full Product Name	Luminaire light beam spread	Light source color	Correlated Color Temperature (Nom)	Color rendering index (CRI)
912300060429	BVP518 1720/740 BV A35-WB D9 T35 OUT	5° - 13° x 120°	740 neutral white	4000 K	70
912300060432	BVP518 1720/757 BV A35-WB D9 T35 OUT	5° - 13° x 120°	757 cool white	5700 K	70
912300060436	BVP518 1720/740 BV A65-WB D9 T35 OUT	5° - 13° x 120°	740 neutral white	4000 K	70

Order Code	Full Product Name	Luminaire light beam spread	Light source color	Correlated Color Temperature (Nom)	Color rendering index (CRI)
912300060431	BVP518 1720/740 HGB A35-WB D9 T35 OUT	5° - 13° x 120°	740 neutral white	4000 K	70
912300060882	BVP528 2830/757 PSD BV A35-WB D9 T25 OUT	5° - 11° x 78°	757 cool white	5700 K	>70
912300060883	BVP528 2830/757 PSD BV A35-NB D9 T25 OUT	5° - 11° x 78°	757 cool white	5700 K	>70

## OptiVision LED gen3.5

Order Code	Full Product Name	Luminaire light beam spread	Light source color	Correlated	Color
				Color Temperature (Nom)	rendering index (CRI)
912300060884	BVP528 2830/757 PSD BV A35-XWB D9 T25OUT	5° - 11° x 78°	757 cool white	5700 K	>70
912300060440	BVP528 2590/740 HGB A35-WB D9 T35 OUT	5° - 13° x 120°	740 neutral white	4000 K	70
912300060439	BVP528 2590/740 BV A35-WB D9 T35 OUT LO	5° - 13° x 120°	740 neutral white	4000 K	70

Order Code	Full Product Name	Luminaire light beam spread	Light source color	Correlated	Color
				Color Temperature (Nom)	rendering index (CRI)
912300060441	BVP528 2590/757 BV A35-WB D9 T35 OUT	5° - 13° x 120°	757 cool white	5700 K	70
912300060445	BVP528 2590/740 BV A65-WB D9 T35 OUT	5° - 13° x 120°	740 neutral white	4000 K	70

### Light Technical (2/2)

Order Code	Full Product Name	Luminous Flux	Optic type
			outdoor
912300060429	BVP518 1720/740 BV A35-WB D9 T35 OUT	149,640 lm	Asymmetrical
912300060432	BVP518 1720/757 BV A35-WB D9 T35 OUT	149,640 lm	Asymmetrical
912300060436	BVP518 1720/740 BV A65-WB D9 T35 OUT	149,640 lm	Asymmetrical
912300060431	BVP518 1720/740 HGB A35-WB D9 T35 OUT	149,640 lm	Asymmetrical
912300060882	BVP528 2830/757 PSD BV A35- WB D9 T25 OUT	236,846 lm	Asymmetrical narrow beam
912300060883	BVP528 2830/757 PSD BV A35-NB D9 T25 OUT	240,007 lm	Asymmetrical narrow beam

Order Code	Full Product Name	Luminous Flux	Optic type
			outdoor
912300060884	BVP528 2830/757 PSD BV A35- XWB D9 T25OUT	233,797 lm	Asymmetrical narrow beam
912300060440	BVP528 2590/740 HGB A35-WB D9 T35 OUT	225,330 lm	Asymmetrical
912300060439	BVP528 2590/740 BV A35-WB D9 T35 OUT LO	181,300 lm	Asymmetrical
912300060441	BVP528 2590/757 BV A35-WB D9 T35 OUT	225,330 lm	Asymmetrical
912300060445	BVP528 2590/740 BV A65-WB D9 T35 OUT	196,840 lm	Asymmetrical

### Operating and Electrical

Order Code	Full Product Name	Power	Surge Protection
		Consumption	(Common/Differential)
912300060429	BVP518 1720/740 BV A35-WB D9 T35 OUT	1,000 W	Surge protection level until 10 kV differential mode
912300060432	BVP518 1720/757 BV A35-WB D9 T35 OUT	1,000 W	Surge protection level until 10 kV differential mode
912300060436	BVP518 1720/740 BV A65-WB D9 T35 OUT	1,000 W	Surge protection level until 10 kV differential mode
912300060431	BVP518 1720/740 HGB A35-WB D9 T35 OUT	1,000 W	Surge protection level until 10 kV differential mode
912300060882	BVP528 2830/757 PSD BV A35-WB D9 T25 OUT	1,670 W	Surge protection level until 10 kV differential mode and 10 kV common mode
912300060883	BVP528 2830/757 PSD BV A35-NB D9 T25 OUT	1,670 W	Surge protection level until 10 kV differential mode and 10 kV common mode

Order Code	Full Product Name	Power	Surge Protection
		Consumption	(Common/Differential)
912300060884	BVP528 2830/757 PSD BV A35-XWB D9 T25OUT	1,670 W	Surge protection level until 10 kV differential mode and 10 kV common mode
912300060440	BVP528 2590/740 HGB A35-WB D9 T35 OUT	1,500 W	Surge protection level until 10 kV differential mode
912300060439	BVP528 2590/740 BV A35-WB D9 T35 OUT LO	1,500 W	Surge protection level until 10 kV differential mode
912300060441	BVP528 2590/757 BV A35-WB D9 T35 OUT	1,500 W	Surge protection level until 10 kV differential mode
912300060445	BVP528 2590/740 BV A65-WB D9 T35 OUT	1,500 W	Surge protection level until 10 kV differential mode

# OptiVision LED gen3.5

## Mechanical and Housing

Order Code	Full Product Name	Optical cover type	Standard tilt angle posttop
912300060429	BVP518 1720/740 BV A35-WB D9 T35 OUT	Polycarbonate bowl/cover clear	0°
912300060432	BVP518 1720/757 BV A35-WB D9 T35 OUT	Polycarbonate bowl/cover clear	0°
912300060436	BVP518 1720/740 BV A65-WB D9 T35 OUT	Polycarbonate bowl/cover clear	0°
912300060431	BVP518 1720/740 HGB A35-WB D9 T35 OUT	Polycarbonate bowl/cover clear	0°
912300060882	BVP528 2830/757 PSD BV A35-WB D9 T25 OUT	Polycarbonate bowl/cover UV-resistant	15°
912300060883	BVP528 2830/757 PSD BV A35-NB D9 T25 OUT	Polycarbonate bowl/cover UV-resistant	15°

Order Code	Full Product Name	Optical cover type	Standard tilt angle posttop
912300060884	BVP528 2830/757 PSD BV A35-XWB D9 T25OUT	Polycarbonate bowl/cover UV-resistant	15°
912300060440	BVP528 2590/740 HGB A35-WB D9 T35 OUT	Polycarbonate bowl/cover clear	0°
912300060439	BVP528 2590/740 BV A35-WB D9 T35 OUT LO	Polycarbonate bowl/cover clear	0°
912300060441	BVP528 2590/757 BV A35-WB D9 T35 OUT	Polycarbonate bowl/cover clear	0°
912300060445	BVP528 2590/740 BV A65-WB D9 T35 OUT	Polycarbonate bowl/cover clear	0°

## Product Data

Order Code	Full Product Name	Product family code
912300060429	BVP518 1720/740 BV A35-WB D9 T35 OUT	BVP518
912300060432	BVP518 1720/757 BV A35-WB D9 T35 OUT	BVP518
912300060436	BVP518 1720/740 BV A65-WB D9 T35 OUT	BVP518
912300060431	BVP518 1720/740 HGB A35-WB D9 T35 OUT	BVP518
912300060882	BVP528 2830/757 PSD BV A35-WB D9 T25 OUT	BVP528
912300060883	BVP528 2830/757 PSD BV A35-NB D9 T25 OUT	BVP528

Order Code	Full Product Name	Product family code
912300060884	BVP528 2830/757 PSD BV A35-XWB D9 T25OUT	BVP528
912300060440	BVP528 2590/740 HGB A35-WB D9 T35 OUT	BVP528
912300060439	BVP528 2590/740 BV A35-WB D9 T35 OUT LO	BVP528
912300060441	BVP528 2590/757 BV A35-WB D9 T35 OUT	BVP528
912300060445	BVP528 2590/740 BV A65-WB D9 T35 OUT	BVP528

