



# Architectural LED floodlight for fixed or dynamic lighting

## UniFlood C Pro

The Philips UniFlood C Pro offers a unique rugged elegance, with a cylindrical form and flowing lines that connect the front and back housings beautifully. This is a compact architectural floodlighting design where every element has a purpose; the front section provides exceptional lighting, the back section houses all the electrical components. Between the two, the fins dissipate heat and also serve as a decorative element. Exterior-rated, the Philips UniFlood C Pro is a cost-effective, architectural LED floodlight that is designed for façade, landscape and outdoor floodlighting applications. The robust mechanical design and high-efficiency optics make it ideal for illuminating multi-storey exterior façades, bridges, landmarks and monuments. Architects and designers have the freedom to explore a wide range of concepts and designs with no limitations, thanks to a range of colours, multiple spread lenses and a DMX512/RDM control option.

### Benefits

- Available in white, monochromatic colors, RGB, RGBW and tunable white
- Wide range of beam angles from Narrow Spot to Wide Flood
- Available in DMX512/RDM control interface option

### Features

- Robust design, IP66 rated for outdoor use
- Optical distributions: 3.5°, 10°, 15°, 30°, 45° and 60°
- Adjustable ±90° tilting angle
- Through wiring for DMX signal via dedicated cables with IP67 connectors

# UniFlood C Pro

## Application

- Bridges, Monuments, Façades
- Landscape
- Parks and Plazas

## Warnings and Safety

- For outdoor use only

## Versions

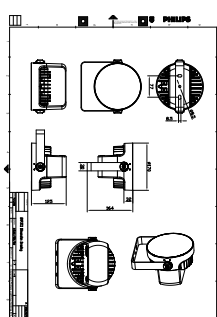
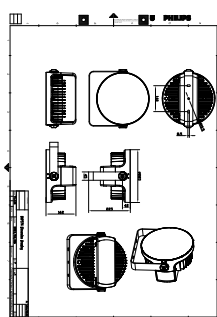
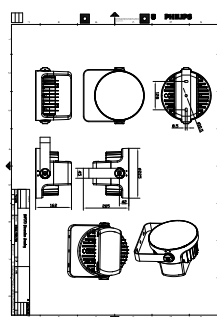


UniFlood C Pro



UniFlood C Pro

## Dimensional drawing



UniFlood C Pro

| General Information          |             |
|------------------------------|-------------|
| Driver included              | Yes         |
| Mechanical and Housing       |             |
| Optical cover type           | Clear glass |
| Housing Color                | Dark gray   |
| Mech. impact protection code | IK06        |
| Ingress protection code      | IP66        |
| Approval and Application     |             |
| CE mark                      | Yes         |

Light Technical

| Order Code   | Full Product Name | Light source color | Correlated Color Temperature (Nom) | Color rendering index (CRI) | Luminous Flux |
|--------------|-------------------|--------------------|------------------------------------|-----------------------------|---------------|
|              |                   |                    |                                    |                             |               |
| 911401774213 | BVP372 16LED      | 830                | 3000 K                             | >80                         | 2,340 lm      |
|              | 30K 220V 10       | warm               |                                    |                             |               |
|              | DMX 40W HP        | white              |                                    |                             |               |
| 911401774303 | BVP372 16LED      | 840                | 4000 K                             | >80                         | 2,870 lm      |
|              | 40K 220V 10       | neutral            |                                    |                             |               |
|              | 40W HP            | white              |                                    |                             |               |
| 911401774853 | BVP372 20LED      | RGBW               | -                                  | N.A.                        | 2,140 lm      |
|              | RGBNW 220V 10     |                    |                                    |                             |               |
|              | DMX 50W HP        |                    |                                    |                             |               |

| Order Code   | Full Product Name | Light source color | Correlated Color Temperature (Nom) | Color rendering index (CRI) | Luminous Flux |
|--------------|-------------------|--------------------|------------------------------------|-----------------------------|---------------|
|              |                   |                    |                                    |                             |               |
| 911401775063 | BVP373 30LED      | 830                | 3000 K                             | >80                         | 4,840 lm      |
|              | 30K 220V 10       | warm               |                                    |                             |               |
|              | DMX 80W HP        | white              |                                    |                             |               |
| 911401775333 | BVP373 32LED      | RGBW               | -                                  | N.A.                        | 3,125 lm      |
|              | RGBNW 220V 45     |                    |                                    |                             |               |
|              | DMX 80W HP        |                    |                                    |                             |               |
| 911401776653 | BVP374 60LED      | RGBW               | -                                  | N.A.                        | 6,635 lm      |
|              | RGBNW 220V 10     |                    |                                    |                             |               |
|              | DMX 150W HP       |                    |                                    |                             |               |

Operating and Electrical

| Order Code   | Full Product Name                     | Power Consumption |
|--------------|---------------------------------------|-------------------|
| 911401774213 | BVP372 16LED 30K 220V 10 DMX 40W HP   | 40 W              |
| 911401774303 | BVP372 16LED 40K 220V 10 40W HP       | 40 W              |
| 911401774853 | BVP372 20LED RGBNW 220V 10 DMX 50W HP | 50 W              |

| Order Code   | Full Product Name                      | Power Consumption |
|--------------|--|-------------------|
| 911401775063 | BVP373 30LED 30K 220V 10 DMX 80W HP    | 80 W              |
| 911401775333 | BVP373 32LED RGBNW 220V 45 DMX 80W HP  | 80 W              |
| 911401776653 | BVP374 60LED RGBNW 220V 10 DMX 150W HP | 150 W             |

Controls and Dimming

| Order Code   | Full Product Name                     | Dimmable |
|--------------|---------------------------------------|----------|
| 911401774213 | BVP372 16LED 30K 220V 10 DMX 40W HP   | Yes      |
| 911401774303 | BVP372 16LED 40K 220V 10 40W HP       | No       |
| 911401774853 | BVP372 20LED RGBNW 220V 10 DMX 50W HP | Yes      |

| Order Code   | Full Product Name                      | Dimmable |
|--------------|--|----------|
| 911401775063 | BVP373 30LED 30K 220V 10 DMX 80W HP    | Yes      |
| 911401775333 | BVP373 32LED RGBNW 220V 45 DMX 80W HP  | Yes      |
| 911401776653 | BVP374 60LED RGBNW 220V 10 DMX 150W HP | Yes      |

