



# Architectural LED floodlight for fixed or dynamic lighting

## UniFlood C Pro

The Philips UniFlood C Pro offers a unique rugged elegance, with a cylindrical form and flowing lines that connect the front and back housings beautifully. This is a compact architectural floodlighting design where every element has a purpose; the front section provides exceptional lighting, the back section houses all the electrical components. Between the two, the fins dissipate heat and also serve as a decorative element. Exterior-rated, the Philips UniFlood C Pro is a cost-effective, architectural LED floodlight that is designed for façade, landscape and outdoor floodlighting applications. The robust mechanical design and high-efficiency optics make it ideal for illuminating multi-storey exterior façades, bridges, landmarks and monuments. Architects and designers have the freedom to explore a wide range of concepts and designs with no limitations, thanks to a range of colours, multiple spread lenses and a DMX512/RDM control option.

### Benefits

- Available in white, monochromatic colors, RGB, RGBW and tunable white
- Wide range of beam angles from Narrow Spot to Wide Flood
- Available in DMX512/RDM control interface option

### Features

- Robust design, IP66 rated for outdoor use
- Optical distributions: 3.5°, 10°, 15°, 30°, 45° and 60°
- Adjustable ±90° tilting angle
- Through wiring for DMX signal via dedicated cables with IP67 connectors

# UniFlood C Pro

## Application

- Bridges, Monuments, Façades
- Landscape
- Parks and Plazas

## Warnings and Safety

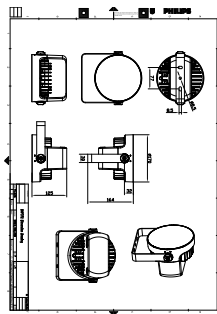
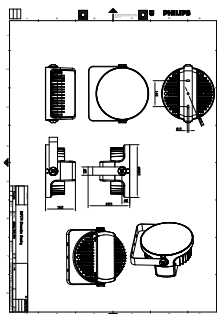
- For outdoor use only

## Versions



UniFlood C Pro

## Dimensional drawing



General Information	
Driver included	Yes
Light Technical	
Color rendering index (CRI)	>80
Mechanical and Housing	
Optical cover type	Clear glass
Housing Color	Dark gray
Mech. impact protection code	IK06
Ingress protection code	IP66
Approval and Application	
CE mark	Yes

Light Technical

Order Code	Full Product Name	Light source color	Correlated Color	
			Temperature (Nom)	Luminous Flux
911401774313	BVP372 16LED 40K 220V 10 DMX 40W HP	840 neutral white	4000 K	2,610 lm
911401774513	BVP372 18LED 27K 220V 10 DMX 50W HP	827 warm white	2700 K	2,745 lm

Order Code	Full Product Name	Light source color	Correlated Color	
			Temperature (Nom)	Luminous Flux
911401776563	BVP374 60LED 40K 220V 45 150W HP	840 neutral white	4000 K	9,730 lm

Operating and Electrical

Order Code	Full Product Name	Power Consumption
911401774313	BVP372 16LED 40K 220V 10 DMX 40W HP	40 W
911401774513	BVP372 18LED 27K 220V 10 DMX 50W HP	50 W

Order Code	Full Product Name	Power Consumption
911401776563	BVP374 60LED 40K 220V 45 150W HP	150 W

Controls and Dimming

Order Code	Full Product Name	Dimmable
911401774313	BVP372 16LED 40K 220V 10 DMX 40W HP	Yes
911401774513	BVP372 18LED 27K 220V 10 DMX 50W HP	Yes

Order Code	Full Product Name	Dimmable
911401776563	BVP374 60LED 40K 220V 45 150W HP	No

