



UniFlood M gen2: A high power floodlight with true modularity

UniFlood M G2

Philips UniFlood M gen2 is a cost-effective, exterior-rated architectural LED floodlight that's designed for façade, landscape and outdoor flood lighting applications. The robust, modular, rectangular design features highly-efficient optics, making it ideal for illuminating everything from multi-storey façades and bridges to landmarks and monuments. This LED floodlight is available in white, monochromatic colors, RGB, RGBW and tunable white. It comes with six different spread lenses ranging from narrow spot to wide flood and has DMX512/RDM control option. A truly modular floodlight that gives architects and designers the freedom to explore a wide range of concepts and designs with no limitations.

Benefits

- Great design flexibility with individually tilting heads and controls
- Create the right lighting effect with six different spread lenses (narrow spot to wide flood)
- Easy to control with DMX512/RDM
- A robust choice that's IP66-rated for outdoor use

Features

- Standard: RGBW, RGB, 2700K, 3000K and 4000K
- Optional 5000K, monochromatic colors and tunable white
- Flexible lengths from 155 to 569 mm
- Adjustable tilting angles for each head and for the whole set
- Steel brackets

UniFlood M G2

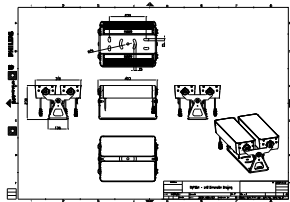
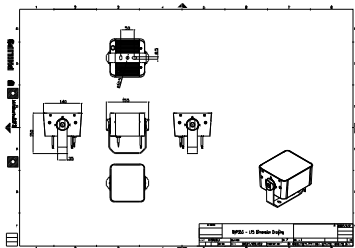
Application

- Bridges, Monuments, Facades
- Parks and Plazas
- Landscape

Warnings and Safety

- For outdoor use only.

Dimensional drawing



General Information

Driver included	Yes
Light Technical	
Color rendering index (CRI)	>80
Mechanical and Housing	
Optical cover type	Clear glass
Housing Color	Dark gray
Mech. impact protection code	IK06
Ingress protection code	IP66

Approval and Application

CE mark	Yes
Flammability mark	For mounting on normally flammable surfaces

Light Technical

Order Code	Full Product Name	Light source color	Correlated Color Temperature (Nom)	Luminous Flux
911401748823	BVP354 96LED RGBWW 220V L40 15 DMX	RGBW	-	11,030 lm
911401748903	BVP354 96LED RGB 220V L40 30 DMX	RGB	-	8,885 lm
911401748913	BVP354 96LED RGBWW 220V L40 30 DMX	RGBW	-	11,425 lm
911401745443	BVP353 12LED 40K 220V L15 10	840 neutral white	4000 K	2,050 lm
911401745533	BVP353 12LED 40K 220V L15 15	840 neutral white	4000 K	2,150 lm
911401745623	BVP353 12LED 40K 220V L15 30	840 neutral white	4000 K	2,225 lm

Operating and Electrical

Order Code	Full Product Name	Power Consumption
911401748823	BVP354 96LED RGBWW 220V L40 15 DMX	200 W
911401748903	BVP354 96LED RGB 220V L40 30 DMX	200 W
911401748913	BVP354 96LED RGBWW 220V L40 30 DMX	200 W

Order Code	Full Product Name	Power Consumption
911401745443	BVP353 12LED 40K 220V L15 10	24 W
911401745533	BVP353 12LED 40K 220V L15 15	24 W
911401745623	BVP353 12LED 40K 220V L15 30	24 W

Controls and Dimming

UniFlood M G2

Order Code	Full Product Name	Dimmable
911401748823	BVP354 96LED RGBWW 220V L40 15 DMX	Yes
911401748903	BVP354 96LED RGB 220V L40 30 DMX	Yes
911401748913	BVP354 96LED RGBWW 220V L40 30 DMX	Yes

Order Code	Full Product Name	Dimmable
911401745443	BVP353 12LED 40K 220V L15 10	No
911401745533	BVP353 12LED 40K 220V L15 15	No
911401745623	BVP353 12LED 40K 220V L15 30	No

