



# UniFlood M gen2: A high power floodlight with true modularity

## UniFlood M G2

Philips UniFlood M gen2 is a cost-effective, exterior-rated architectural LED floodlight that's designed for façade, landscape and outdoor flood lighting applications. The robust, modular, rectangular design features highly-efficient optics, making it ideal for illuminating everything from multi-storey façades and bridges to landmarks and monuments. This LED floodlight is available in white, monochromatic colors, RGB, RGBW and tunable white. It comes with six different spread lenses ranging from narrow spot to wide flood and has DMX512/RDM control option. A truly modular floodlight that gives architects and designers the freedom to explore a wide range of concepts and designs with no limitations.

### Benefits

- Great design flexibility with individually tilting heads and controls
- Create the right lighting effect with six different spread lenses (narrow spot to wide flood)
- Easy to control with DMX512/RDM
- A robust choice that's IP66-rated for outdoor use

### Features

- Standard: RGBW, RGB, 2700K, 3000K and 4000K
- Optional 5000K, monochromatic colors and tunable white
- Flexible lengths from 155 to 569 mm
- Adjustable tilting angles for each head and for the whole set
- Steel brackets

# UniFlood M G2

## Application

- Bridges, Monuments, Facades
- Parks and Plazas
- Landscape

## Warnings and Safety

- For outdoor use only.

## Versions



UniFlood M Gen2



UniFlood M Gen2



UniFlood M Gen2

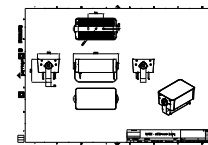
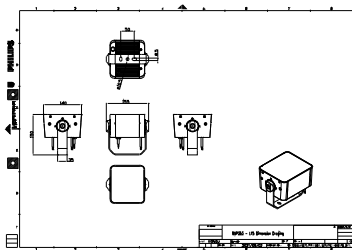


UniFlood M Gen2



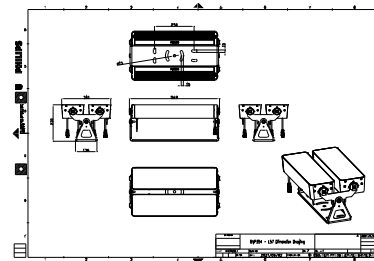
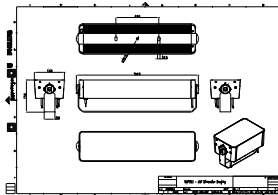
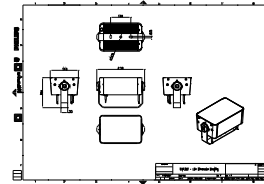
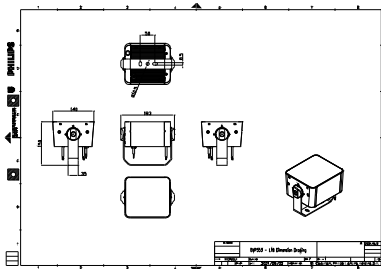
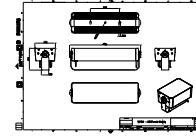
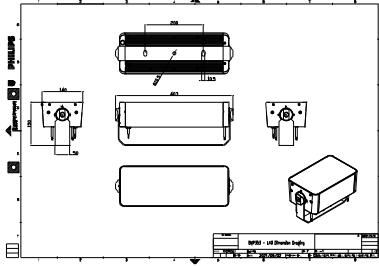
UniFlood M Gen2

## Dimensional drawing



# UniFlood M G2

## Dimensional drawing



## General Information

Driver included Yes

## Light Technical

Color rendering index (CRI) >80

## Mechanical and Housing

Optical cover type Clear glass

Housing Color Dark gray

Mech. impact protection code IK06

Ingress protection code IP66

## Approval and Application

CE mark Yes

Flammability mark For mounting on normally flammable surfaces

## Light Technical

Order Code	Full Product Name	Light source color	Correlated Color Temperature (Nom)	Luminous Flux
911401746873	BVP353 30LED 30K 220V L30 10	830 warm white	3000 K	4,710 lm
911401749463	BVP354 144LED RGBNW 220V L57 10 DMX	RGBW	-	15,030 lm
911401749733	BVP354 144LED RGBNW 220V L57 45 DMX	RGBW	-	15,785 lm
911401748463	BVP353 72LED RGBWW 220V L57 15 DMX	RGBW	-	7,555 lm
911401748653	BVP353 72LED RGBNW 220V L57 45 DMX	RGBW	-	7,890 lm
911401745433	BVP353 12LED 30K 220V L15 10	830 warm white	3000 K	1,835 lm
911401745493	BVP353 12LED RGBWW 220V L15 10 DMX	RGBW	-	1,175 lm
911401745523	BVP353 12LED 30K 220V L15 15	830 warm white	3000 K	1,925 lm
911401745583	BVP353 12LED RGBWW 220V L15 15 DMX	RGBW	-	1,230 lm
911401745603	BVP353 12LED 27K 220V L15 30	827 warm white	2700 K	1,915 lm
911401745673	BVP353 12LED RGBWW 220V L15 30 DMX	RGBW	-	1,275 lm
911401746523	BVP353 24LED 40K 220V L24 10	840 neutral white	4000 K	4,205 lm
911401746573	BVP353 24LED RGBWW 220V L24 10 DMX	RGBW	-	2,350 lm
911401746673	BVP353 24LED RGBNW 220V L24 15 DMX	RGBW	-	2,575 lm
911401746763	BVP353 24LED RGBNW 220V L24 30 DMX	RGBW	-	2,665 lm
911401747963	BVP353 60LED 40K 220V L50 10	840 neutral white	4000 K	10,645 lm
911401748023	BVP353 60LED RGBNW 220V L50 10 DMX	RGBW	-	6,260 lm
911401746043	BVP353 16LED RGBNW 220V L18 30 DMX	RGBW	-	1,620 lm
911401747863	BVP353 48LED 30K 220V L40 45	830 warm white	3000 K	8,145 lm

## Operating and Electrical

Order Code	Full Product Name	Power Consumption	Order Code	Full Product Name	Power Consumption
911401746873	BVP353 30LED 30K 220V L30 10	60 W	911401745583	BVP353 12LED RGBWW 220V L15 15 DMX	24 W
911401749463	BVP354 144LED RGBNW 220V L57 10 DMX	300 W	911401745603	BVP353 12LED 27K 220V L15 30	24 W
911401749733	BVP354 144LED RGBNW 220V L57 45 DMX	300 W	911401745673	BVP353 12LED RGBWW 220V L15 30 DMX	24 W
911401748463	BVP353 72LED RGBWW 220V L57 15 DMX	150 W	911401746523	BVP353 24LED 40K 220V L24 10	50 W
911401748653	BVP353 72LED RGBNW 220V L57 45 DMX	150 W	911401746573	BVP353 24LED RGBWW 220V L24 10 DMX	50 W
911401745433	BVP353 12LED 30K 220V L15 10	24 W	911401746673	BVP353 24LED RGBNW 220V L24 15 DMX	50 W
911401745493	BVP353 12LED RGBWW 220V L15 10 DMX	24 W	911401746763	BVP353 24LED RGBNW 220V L24 30 DMX	50 W
911401745523	BVP353 12LED 30K 220V L15 15	24 W	911401747963	BVP353 60LED 40K 220V L50 10	120 W

## UniFlood M G2

Order Code	Full Product Name	Power Consumption
911401748023	BVP353 60LED RGBNW 220V L50 10 DMX	120 W
911401746043	BVP353 16LED RGBNW 220V L18 30 DMX	30 W

Order Code	Full Product Name	Power Consumption
911401747863	BVP353 48LED 30K 220V L40 45	100 W

### Controls and Dimming

Order Code	Full Product Name	Dimmable
911401746873	BVP353 30LED 30K 220V L30 10	No
911401749463	BVP354 144LED RGBNW 220V L57 10 DMX	Yes
911401749733	BVP354 144LED RGBNW 220V L57 45 DMX	Yes
911401748463	BVP353 72LED RGBWW 220V L57 15 DMX	Yes
911401748653	BVP353 72LED RGBNW 220V L57 45 DMX	Yes
911401745433	BVP353 12LED 30K 220V L15 10	No
911401745493	BVP353 12LED RGBWW 220V L15 10 DMX	Yes
911401745523	BVP353 12LED 30K 220V L15 15	No
911401745583	BVP353 12LED RGBWW 220V L15 15 DMX	Yes
911401745603	BVP353 12LED 27K 220V L15 30	No

Order Code	Full Product Name	Dimmable
911401745673	BVP353 12LED RGBWW 220V L15 30 DMX	Yes
911401746523	BVP353 24LED 40K 220V L24 10	No
911401746573	BVP353 24LED RGBWW 220V L24 10 DMX	Yes
911401746673	BVP353 24LED RGBNW 220V L24 15 DMX	Yes
911401746763	BVP353 24LED RGBNW 220V L24 30 DMX	Yes
911401747963	BVP353 60LED 40K 220V L50 10	No
911401748023	BVP353 60LED RGBNW 220V L50 10 DMX	Yes
911401746043	BVP353 16LED RGBNW 220V L18 30 DMX	Yes
911401747863	BVP353 48LED 30K 220V L40 45	No

