



# UniFlood M gen2: A high power floodlight with true modularity

## UniFlood M G2

Philips UniFlood M gen2 is a cost-effective, exterior-rated architectural LED floodlight that's designed for façade, landscape and outdoor flood lighting applications. The robust, modular, rectangular design features highly-efficient optics, making it ideal for illuminating everything from multi-storey façades and bridges to landmarks and monuments. This LED floodlight is available in white, monochromatic colors, RGB, RGBW and tunable white. It comes with six different spread lenses ranging from narrow spot to wide flood and has DMX512/RDM control option. A truly modular floodlight that gives architects and designers the freedom to explore a wide range of concepts and designs with no limitations.

### Benefits

- Great design flexibility with individually tilting heads and controls
- Create the right lighting effect with six different spread lenses (narrow spot to wide flood)
- Easy to control with DMX512/RDM
- A robust choice that's IP66-rated for outdoor use

### Features

- Standard: RGBW, RGB, 2700K, 3000K and 4000K
- Optional 5000K, monochromatic colors and tunable white
- Flexible lengths from 155 to 569 mm
- Adjustable tilting angles for each head and for the whole set
- Steel brackets

# UniFlood M G2

## Application

- Bridges, Monuments, Facades
- Parks and Plazas
- Landscape

## Warnings and Safety

- For outdoor use only.

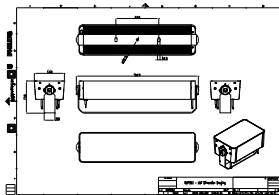
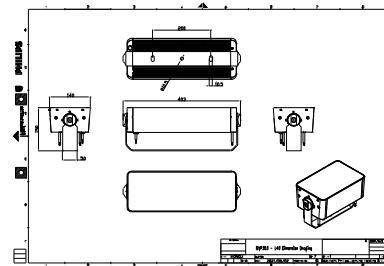
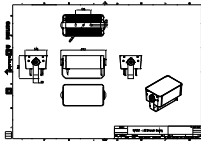
## Versions



UniFlood M Gen2

UniFlood M Gen2

## Dimensional drawing



# UniFlood M G2

## General Information

Driver included Yes

## Light Technical

Color rendering index (CRI) >80

## Mechanical and Housing

Optical cover type Clear glass

Housing Color Dark gray

Mech. impact protection code IK06

Ingress protection code IP66

## Approval and Application

CE mark Yes

Flammability mark For mounting on normally flammable surfaces

## Light Technical

Order Code	Full Product Name	Light source	Correlated Color	
		color	Temperature (Nom)	Luminous Flux
911401747143	BVP353 30LED 30K 220V L30 45	830 warm white	3000 K	4,945 lm
911401748373	BVP353 72LED RGBWW 220V L57 10 DMX	RGBW	-	7,195 lm
911401748383	BVP353 72LED RGBNW 220V L57 10 DMX	RGBW	-	7,515 lm
911401748473	BVP353 72LED RGBNW 220V L57 15 DMX	RGBW	-	7,890 lm
911401748583	BVP353 72LED 30K 220V L57 45	830 warm white	3000 K	12,465 lm
911401747663	BVP353 48LED RGBNW 220V L40 10 DMX	RGBW	-	5,485 lm

## Operating and Electrical

Order Code	Full Product Name	Power Consumption
911401747143	BVP353 30LED 30K 220V L30 45	60 W
911401748373	BVP353 72LED RGBWW 220V L57 10 DMX	150 W
911401748383	BVP353 72LED RGBNW 220V L57 10 DMX	150 W

Order Code	Full Product Name	Power Consumption
911401748473	BVP353 72LED RGBNW 220V L57 15 DMX	150 W
911401748583	BVP353 72LED 30K 220V L57 45	150 W
911401747663	BVP353 48LED RGBNW 220V L40 10 DMX	100 W

## Controls and Dimming

Order Code	Full Product Name	Dimmable
911401747143	BVP353 30LED 30K 220V L30 45	No
911401748373	BVP353 72LED RGBWW 220V L57 10 DMX	Yes
911401748383	BVP353 72LED RGBNW 220V L57 10 DMX	Yes

Order Code	Full Product Name	Dimmable
911401748473	BVP353 72LED RGBNW 220V L57 15 DMX	Yes
911401748583	BVP353 72LED 30K 220V L57 45	No
911401747663	BVP353 48LED RGBNW 220V L40 10 DMX	Yes

