



UniFlood M gen2: A high power floodlight with true modularity

UniFlood M G2

Philips UniFlood M gen2 is a cost-effective, exterior-rated architectural LED floodlight that's designed for façade, landscape and outdoor flood lighting applications. The robust, modular, rectangular design features highly-efficient optics, making it ideal for illuminating everything from multi-storey façades and bridges to landmarks and monuments. This LED floodlight is available in white, monochromatic colors, RGB, RGBW and tunable white. It comes with six different spread lenses ranging from narrow spot to wide flood and has DMX512/RDM control option. A truly modular floodlight that gives architects and designers the freedom to explore a wide range of concepts and designs with no limitations.

Benefits

- Great design flexibility with individually tilting heads and controls
- Create the right lighting effect with six different spread lenses (narrow spot to wide flood)
- Easy to control with DMX512/RDM
- A robust choice that's IP66-rated for outdoor use

Features

- Standard: RGBW, RGB, 2700K, 3000K and 4000K
- Optional 5000K, monochromatic colors and tunable white
- Flexible lengths from 155 to 569 mm
- Adjustable tilting angles for each head and for the whole set
- Steel brackets

UniFlood M G2

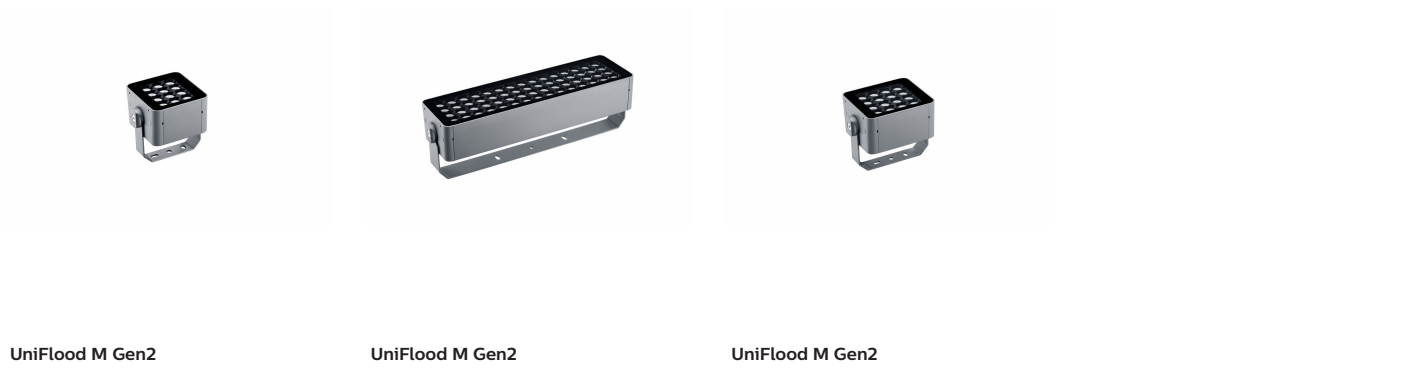
Application

- Bridges, Monuments, Facades
- Parks and Plazas
- Landscape

Warnings and Safety

- For outdoor use only.

Versions

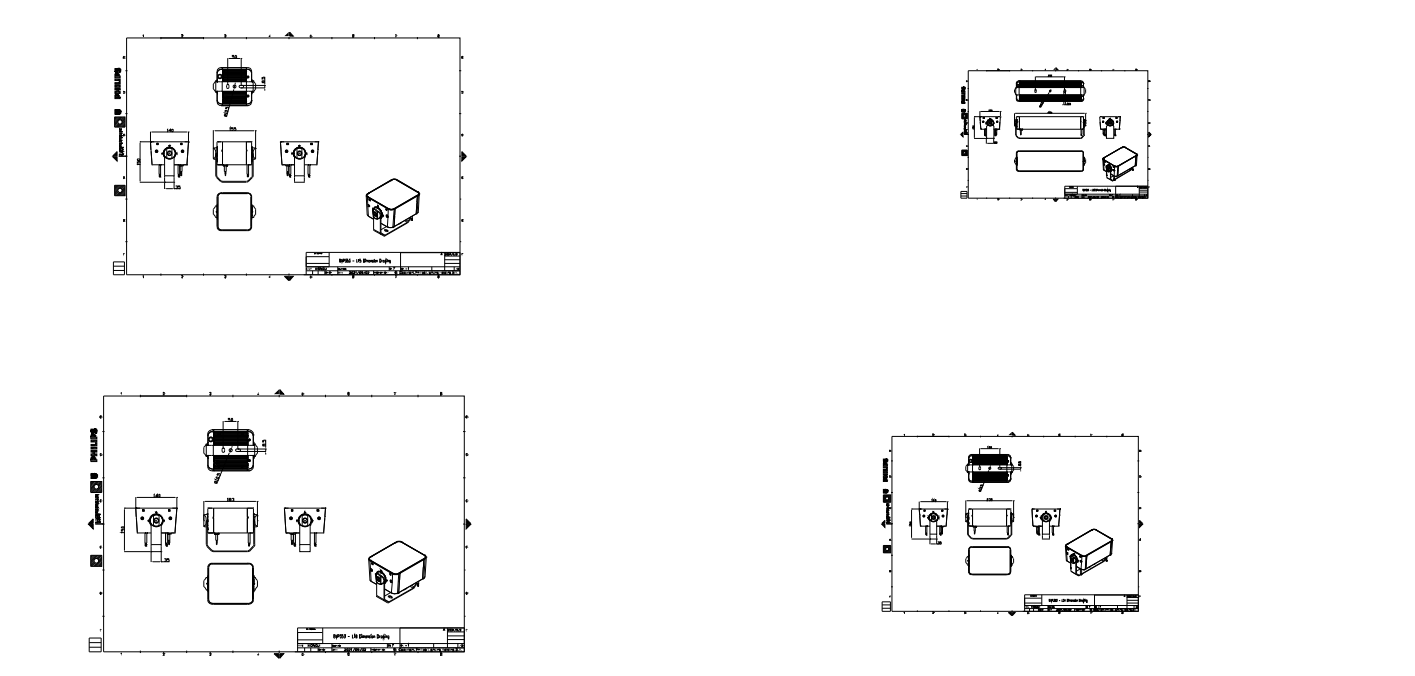


UniFlood M Gen2

UniFlood M Gen2

UniFlood M Gen2

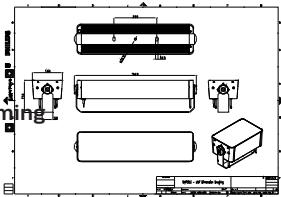
Dimensional drawing



UniFlood M G2

Dimensional drawing

Controls and Dimming



General Information	
Driver included	Yes
Light Technical	
Color rendering index (CRI)	>80
Mechanical and Housing	
Optical cover type	Clear glass
Housing Color	Dark gray
Mech. impact protection code	IK06
Ingress protection code	IP66
Approval and Application	
CE mark	Yes
Flammability mark	For mounting on normally flammable surfaces

Light Technical

		Light source	Correlated Color	
Order Code	Full Product Name	color	Temperature (Nom)	Luminous Flux
911401748483	BVP353 72LED 27K 220V L57 30	827 warm white	2700 K	12,375 lm
911401748553	BVP353 72LED RGBWW 220V L57 30 DMX	RGBW	-	7,825 lm
911401748583	BVP353 72LED 30K 220V L57 45	830 warm white	3000 K	12,465 lm
911401745733	BVP353 12LED 30K 220V L15 45 DMX	830 warm white	3000 K	1,770 lm
911401746523	BVP353 24LED 40K 220V L24 10	840 neutral white	4000 K	4,205 lm
911401746753	BVP353 24LED RGBWW 220V L24 30 DMX	RGBW	-	2,555 lm
911401748133	BVP353 60LED 30K 220V L50 30	830 warm white	3000 K	10,380 lm
911401746033	BVP353 16LED RGBWW 220V L18 30 DMX	RGBW	-	1,550 lm

Operating and Electrical

Order Code	Full Product Name	Power Consumption
911401748483	BVP353 72LED 27K 220V L57 30	150 W
911401748553	BVP353 72LED RGBWW 220V L57 30 DMX	150 W
911401748583	BVP353 72LED 30K 220V L57 45	150 W
911401745733	BVP353 12LED 30K 220V L15 45 DMX	24 W

Order Code	Full Product Name	Power Consumption
911401746523	BVP353 24LED 40K 220V L24 10	50 W
911401746753	BVP353 24LED RGBWW 220V L24 30 DMX	50 W
911401748133	BVP353 60LED 30K 220V L50 30	120 W

