



UniFlood M gen2: A high power floodlight with true modularity

UniFlood M G2

Philips UniFlood M gen2 is a cost-effective, exterior-rated architectural LED floodlight that's designed for façade, landscape and outdoor flood lighting applications. The robust, modular, rectangular design features highly-efficient optics, making it ideal for illuminating everything from multi-storey façades and bridges to landmarks and monuments. This LED floodlight is available in white, monochromatic colors, RGB, RGBW and tunable white. It comes with six different spread lenses ranging from narrow spot to wide flood and has DMX512/RDM control option. A truly modular floodlight that gives architects and designers the freedom to explore a wide range of concepts and designs with no limitations.

Benefits

- Great design flexibility with individually tilting heads and controls
- Create the right lighting effect with six different spread lenses (narrow spot to wide flood)
- Easy to control with DMX512/RDM
- A robust choice that's IP66-rated for outdoor use

Features

- Standard: RGBW, RGB, 2700K, 3000K and 4000K
- Optional 5000K, monochromatic colors and tunable white
- Flexible lengths from 155 to 569 mm
- Adjustable tilting angles for each head and for the whole set
- Steel brackets

UniFlood M G2

Application

- Bridges, Monuments, Facades
- Parks and Plazas
- Landscape

Warnings and Safety

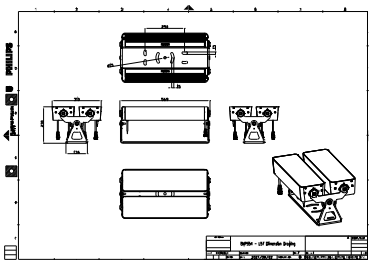
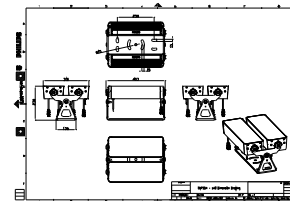
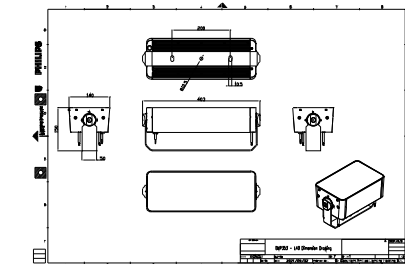
- For outdoor use only.

Versions



UniFlood M Gen2

Dimensional drawing



UniFlood M G2

General Information

Driver included Yes

Light Technical

Light source color RGBW

Correlated Color Temperature (Nom) -

Color rendering index (CRI) >80

Controls and Dimming

Dimmable Yes

Mechanical and Housing

Optical cover type Clear glass

Housing Color Dark gray

Mech. impact protection code IK06

Ingress protection code IP66

Approval and Application

CE mark Yes

Flammability mark For mounting on
normally
flammable
surfaces

Light Technical

Order Code	Full Product Name	Luminous Flux
911401749013	BVP354 96LED RGBNW 220V L40 45 DMX	11,520 lm
911401749553	BVP354 144LED RGBNW 220V L57 15 DMX	15,785 lm
911401747843	BVP353 48LED RGBNW 220V L40 30 DMX	5,965 lm

Operating and Electrical

Order Code	Full Product Name	Power Consumption
911401749013	BVP354 96LED RGBNW 220V L40 45 DMX	200 W
911401749553	BVP354 144LED RGBNW 220V L57 15 DMX	300 W

Order Code	Full Product Name	Power Consumption
911401747843	BVP353 48LED RGBNW 220V L40 30 DMX	100 W

