



LED road lighting all-round player

RoadFlair Gen2

RoadFlair Gen2 is brand new design road lighting product family, set to meet customers' all-round requirements, including high lumen efficacy for energy saving and sustainability, aesthetic design for nice shape and appearance, quality material and components for product reliability and long lifetime, professional optics for various applications fulfillment, dimming and system control interface for improving municipal operations and offering future-proof features. RoadFlair Gen2 competitive price would help on the acceleration of road lighting LED transformation, to a more sustainable society and smarter city.

Benefits

- High lumen efficacy for energy saving.
- Robust quality and reliability.
- Professional optics for various road applications.
- Control interface for system compatibility.
- Economical LED alternative to conventional street lights.

Features

- Four housing types covering up to 43Klm
- Typical 140lm/W
- 1-10V dimming interface
- 100Khrs lifetime
- 10kV or 15kV Surge protection Device

Application

- Pedestrian Road
- Highway Road
- Residential Road
- Interchange

Specifications

RoadFlair Gen2

Material	Housing: die-cast aluminium
	Optic cover: polycarbonate
Light Source	3030 LED
Installation	Side entry 42-60mm
	Optional adjustable spigot
Luminous flux	System flux up to 43500lm
Correlated color temperature - CCT	5700K
	4000K
	3000K
	2700K
Luminaire efficacy	2200K
	4000K: 140lm/W

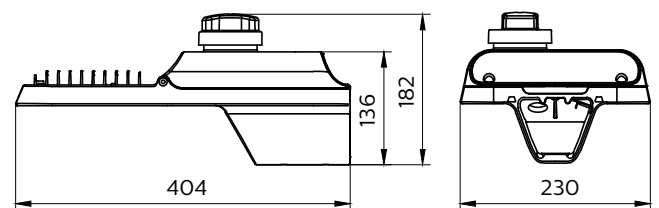
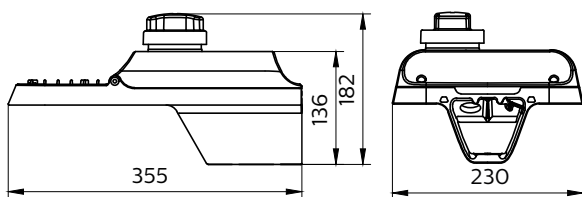
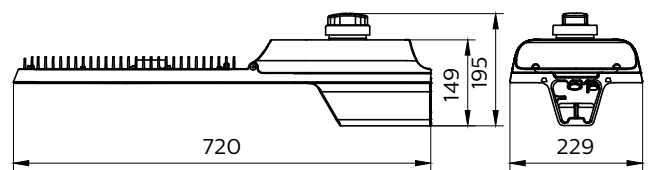
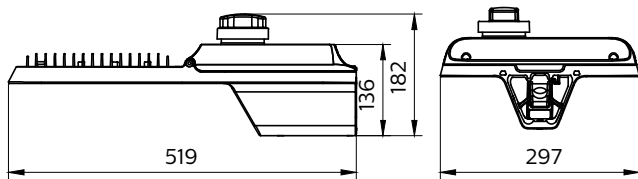
Color Rendering index - CRI	70
Power	up to 300W
Mains Voltage	220-240V / 50-60Hz
Control system input	1-10V
Dimming	PSR: 1-10V
	PSRD: 1-10V, Step dimming, AOC
Operating Temperature range	-40 to +50C Ta
Ingress protection	IP66
Certification	IECEE CB, CE, CQC, RCM

Versions



RoadFlair Gen2 BRP49X

Dimensional drawing



RoadFlair Gen2

Product details

RoadFlair Gen2 BRP49X



RoadFlair Gen2 BRP49X



RoadFlair Gen2 BRP49X



RoadFlair Gen2 BRP49X



RoadFlair Gen2 BRP49X



RoadFlair Gen2 BRP49X

RoadFlair Gen2 BRP49X



RoadFlair Gen2 BRP49X

RoadFlair Gen2 BRP49X



RoadFlair Gen2 BRP49X

RoadFlair Gen2 BRP49X



RoadFlair Gen2 BRP49X



RoadFlair Gen2

General Information	
Driver included	Yes
Service tag	Yes
Light Technical	
Color rendering index (CRI)	>70
Controls and Dimming	
Dimmable	Yes
Mechanical and Housing	
Optical cover type	Polycarbonate micro lens optic
Housing Color	Aluminum and gray
Mech. impact protection code	IK08
Ingress protection code	IP66
Approval and Application	
CE mark	Yes

Light Technical

Order Code	Full Product Name	Light source color	Correlated Color		Luminous Flux
			Temperature (Nom)		
72833200	BRP492 LED215/NW 150W 220-240V DM GM	740 neutral white	4000 K		21,500 lm
72822600	BRP492 LED215/NW 150W 220-240V DM P7 GM	740 neutral white	4000 K		21,500 lm
72834900	BRP492 LED201/WW 150W 220-240V DM GM	730 warm white	3000 K		20,100 lm
96210100	BRP493 LED268/NW 200W 220-240V DM GM	740 neutral white	4000 K		28,500 lm
72830100	BRP493 LED362/NW 250W 220-240V DM GM	740 neutral white	4000 K		36,200 lm
72814100	BRP493 LED285/NW 200W 220-240V DM P7 GM	740 neutral white	4000 K		28,500 lm
72831800	BRP493 LED362/NW 250W 220-240V DM P7 GM	740 neutral white	4000 K		36,200 lm
72815800	BRP493 LED268/WW 200W 220-240V DM GM	730 warm white	3000 K		26,800 lm
72832500	BRP493 LED335/WW 250W 220-240V DM GM	730 warm white	3000 K		33,500 lm
72839400	BRP491 LED102/NW 70W 220-240V DM GM	740 neutral white	4000 K		10,200 lm
72821900	BRP491 LED115/NW 80W 220-240V DM GM	740 neutral white	4000 K		11,500 lm
96211800	BRP491 LED121/NW 90W 220-240V DM GM	740 neutral white	4000 K		13,000 lm
72837000	BRP491 LED142/NW 100W 220-240V DM GM	740 neutral white	4000 K		14,200 lm
72840000	BRP491 LED142/NW 100W 220-240V DM P7 GM	740 neutral white	4000 K		14,200 lm
72841700	BRP491 LED94/WW 70W 220-240V DM GM	730 warm white	3000 K		9,400 lm
72823300	BRP491 LED107/WW 80W 220-240V DM GM	730 warm white	3000 K		10,700 lm
72825700	BRP491 LED134/WW 100W 220-240V DM GM	730 warm white	3000 K		13,400 lm
72843100	BRP494 LED435/NW 300W 220-240V DM GM	740 neutral white	4000 K		43,500 lm

Operating and Electrical

Order Code	Full Product Name	Power Consumption	Order Code	Full Product Name	Power Consumption
72833200	BRP492 LED215/NW 150W 220-240V DM GM	150 W	72839400	BRP491 LED102/NW 70W 220-240V DM GM	70 W
72822600	BRP492 LED215/NW 150W 220-240V DM P7 GM	150 W	72821900	BRP491 LED115/NW 80W 220-240V DM GM	80 W
72834900	BRP492 LED201/WW 150W 220-240V DM GM	150 W	96211800	BRP491 LED121/NW 90W 220-240V DM GM	90 W
96210100	BRP493 LED268/NW 200W 220-240V DM GM	200 W	72837000	BRP491 LED142/NW 100W 220-240V DM GM	100 W
72830100	BRP493 LED362/NW 250W 220-240V DM GM	250 W	72840000	BRP491 LED142/NW 100W 220-240V DM P7 GM	100 W
72814100	BRP493 LED285/NW 200W 220-240V DM P7 GM	200 W	72841700	BRP491 LED94/WW 70W 220-240V DM GM	70 W
72831800	BRP493 LED362/NW 250W 220-240V DM P7 GM	250 W	72823300	BRP491 LED107/WW 80W 220-240V DM GM	80 W
72815800	BRP493 LED268/WW 200W 220-240V DM GM	200 W	72825700	BRP491 LED134/WW 100W 220-240V DM GM	100 W
72832500	BRP493 LED335/WW 250W 220-240V DM GM	250 W	72843100	BRP494 LED435/NW 300W 220-240V DM GM	300 W

