

StreetSaver – save costs, enjoy quality

StreetSaver gen2

In order to comply with EU regulations passed in 2015, municipalities need to replace all mercury-based lamps with lamps that are mercury-free. However, municipalities often have limited budget to handle these huge replacement operations, especially in this period of economic austerity. At the same time, municipal authorities are facing tremendous pressure to save energy and to reduce light pollution of the night sky (many mercury installations have a transparent bowl, sending light everywhere). StreetSaver is an affordable, high-quality solution that enables municipalities to address all these issues by changing their mercury-based luminaires to LED systems – and importantly, it requires only limited investment.

Benefits

- Affordable LED post-top solution with good lighting performance
- High product quality and robust design
- Good lifespan thanks to mid-power LED and 4KV surge protection

Features

- Dedicated LED design
- Aluminum housing and polycarbonate flat glass
- Connection directly at the bottom of the pole thanks to its 6 m cable

Application

- Parks and plazas, pedestrian areas
- Commercial plazas, parking areas
- Residential areas

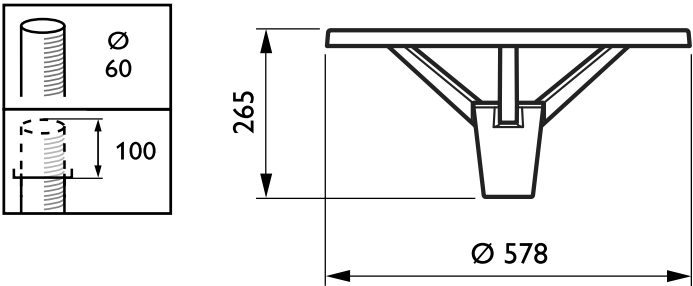
StreetSaver gen2

Versions



StreetSaver G2

Dimensional drawing



Product details

StreetSaver_G2-DPP.tif



StreetSaver gen2

| General Information | |
|--|--|
| Driver included | Yes |
| Light source replaceable | No |
| Number of gear units | 1 unit |
| Light Technical | |
| Luminaire light beam spread | - |
| Light source color | Neutral white |
| Optic type outdoor | Symmetrical |
| Upward light output ratio | 0 |
| Operating and Electrical | |
| Power Consumption | 27 W |
| Surge Protection (Common/ Differential) | Surge protection level until 4 kV differential mode and 4 kV common mode |
| Controls and Dimming | |
| Dimmable | No |
| Mechanical and Housing | |
| Optical cover type | Acrylate micro- lens optic |
| Housing Color | Aluminum and gray |
| Mech. impact protection code | IK08 |
| Ingress protection code | IP65 |
| Standard tilt angle side entry | 0° |
| Standard tilt angle posttop | - |
| Approval and Application | |
| CE mark | Yes |
| Flammability mark | - |

General Information

| Order Code | Full Product Name | Lamp family code |
|--------------|--------------------------------|------------------|
| 911401663403 | BPP008 LED-MP 740 PSU I GR 60P | LED25 |
| 911401663503 | BPP008 LED-MP 830 PSU I GR 60P | LED23 |

Light Technical

| Order Code | Full Product Name | Correlated Color Temperature (Nom) | Color rendering index (CRI) | Luminous Flux |
|--------------|-----------------------------------|--|-----------------------------------|------------------|
| 911401663403 | BPP008 LED-MP 740 PSU I GR 60P | 4000 K | 70 | 2,500 lm |

| Order Code | Full Product Name | Correlated Color Temperature (Nom) | Color rendering index (CRI) | Luminous Flux |
|--------------|-----------------------------------|--|-----------------------------------|------------------|
| 911401663503 | BPP008 LED-MP 830 PSU I GR 60P | 3000 K | 80 | 2,300 lm |

