



可靠靈活

GreenPerform Batten G3 BN398C

GreenPerform batten BN398C 是效能佳，具成本競爭優勢的線性解決方案，適用於零售和工業用途的多種流明輸出。它提供平面安裝和懸掛式安裝，順應不同的安裝選項。它的多重光學設計也能適應不同的應用場合。

优点

- 系統效率高，節能成效更佳
- 適用於不同應用場合的多重光學裝置
- 與時俱進的連線功能

特点

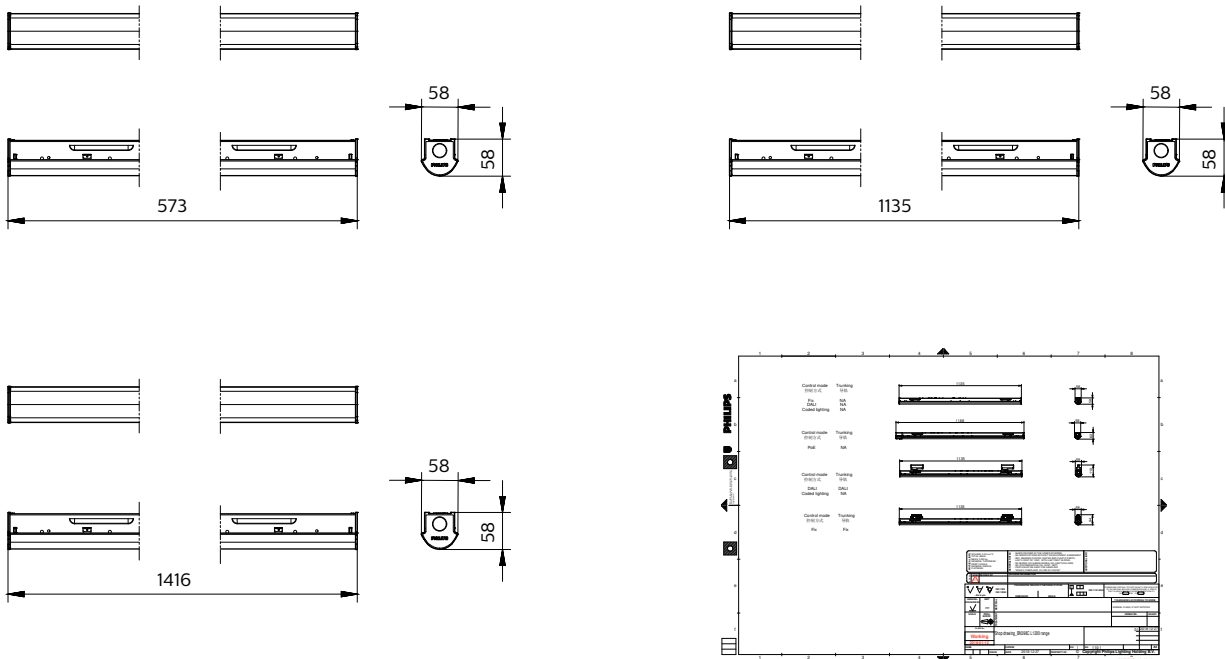
- 系統效率高達 140lm/W
- 寬版和板狀雙翼光束，適合不同的照明應用場合
- DALI 系列與 Interact 可輕鬆控制

应用

- 食品暨大型商店照明
- 倉庫
- 工廠
- 室內公共區域

GreenPerform Batten G3 BN398C

二维绘图



照明技術

演色性指數 (CRI) >80

運轉與電力

保護等級 IEC 安全等級 I

輸入電壓 220-240 V

線路頻率 50 or 60 Hz

機械與外罩

機械衝擊保護規範 IK03

防水防塵規範 (IP) IP20

認證與應用

CE 標誌 是

ENEC 標誌 -

一般資訊

Order Code	Full Product Name	內附驅動器	部件	裝置部件數量
911401521545	BN398C LED40/NW L1200 PSU OP HE	是	EBR	單位
911401521645	BN398C LED40/CW L1200 PSU OP HE	是	EBR	單位
911401521745	BN398C LED69/NW L1200 PSU OP HE	是	EBR	單位
911401521845	BN398C LED69/CW L1200 PSU OP HE	是	EBR	單位
911401521945	BN398C LED20/NW L1200 PSU OP HE	是	EBR	單位
911401522045	BN398C LED20/CW L1200 PSU OP HE	是	EBR	單位
911401522145	BN398C LED40/NW L1200 PSD OP HE	是	EBD	單位
911401522245	BN398C LED40/CW L1200 PSD OP HE	是	EBD	單位
911401522345	BN398C LED69/NW L1200 PSD OP HE	是	EBD	單位
911401522445	BN398C LED69/CW L1200 PSD OP HE	是	EBD	單位
911401501571	BN398C LED20/CW L1200 PSU OP	-	-	-
911401501671	BN398C LED20/NW L1200 PSU OP	-	-	-
911401583251	BN398C LED20/NW L600 PSU OP	-	-	-
911401583351	BN398C LED20/CW L600 PSU OP	-	-	-
911401583451	BN398C LED40/NW L1200 PSU OP	-	-	-
911401583551	BN398C LED40/CW L1200 PSU OP	-	-	-
911401583651	BN398C LED69/NW L1200 PSU OP	-	-	-
911401583751	BN398C LED69/CW L1200 PSU OP	-	-	-
911401583851	BN398C LED87/NW L1500 PSU OP	-	-	-
911401583951	BN398C LED87/CW L1500 PSU OP	-	-	-
911401584051	BN398C LED20/NW L600 PSD OP	-	-	-
911401584251	BN398C LED40/NW L1200 PSD OP	-	-	-
911401584351	BN398C LED40/CW L1200 PSD OP	-	-	-
911401584451	BN398C LED69/NW L1200 PSD OP	-	-	-
911401584551	BN398C LED69/CW L1200 PSD OP	-	-	-

GreenPerform Batten G3 BN398C

Order Code	Full Product Name	內附驅動器	部件	裝置部件數量
911401584651	BN398C LED87/NW L1500 PSD OP	-	-	-
911401584751	BN398C LED87/CW L1500 PSD OP	-	-	-
911401584951	BN398C LED20/CW L600 PSU DA	-	-	-
911401585151	BN398C LED40/CW L1200 PSU DA	-	-	-
911401585251	BN398C LED69/NW L1200 PSU DA	-	-	-
911401585351	BN398C LED69/CW L1200 PSU DA	-	-	-
911401585551	BN398C LED87/CW L1500 PSU DA	-	-	-
911401585651	BN398C LED20/NW L600 PSU WB	-	-	-
911401585751	BN398C LED20/CW L600 PSU WB	-	-	-
911401585851	BN398C LED40/NW L1200 PSU WB	-	-	-
911401585951	BN398C LED40/CW L1200 PSU WB	-	-	-
911401586051	BN398C LED69/NW L1200 PSU WB	-	-	-
911401586151	BN398C LED69/CW L1200 PSU WB	-	-	-
911401586251	BN398C LED87/NW L1500 PSU WB	-	-	-
911401586351	BN398C LED87/CW L1500 PSU WB	-	-	-
911401587851	BN398C LED40/NW L1200 PSU OP TC	-	-	-

照明技術 (1/2)

Order Code	Full Product Name	光源光 束角度	相關色溫 (標 稱)	光效 (額定) (標準)	光通量	Order Code	Full Product Name	光源光 束角度	相關色溫 (標 稱)	光效 (額定) (標準)	光通量
911401521545	BN398C LED40/NW L1200 PSU OP HE	115 °	4000 K	160 lm/W	4,000 lm	911401583551	BN398C LED40/CW L1200 PSU OP	-	6500 K	141 lm/W	4,100 lm
911401521645	BN398C LED40/CW L1200 PSU OP HE	115 °	6500 K	160 lm/W	4,000 lm	911401583651	BN398C LED69/NW L1200 PSU OP	-	4000 K	140 lm/W	6,900 lm
911401521745	BN398C LED69/NW L1200 PSU OP HE	115 °	4000 K	160 lm/W	6,900 lm	911401583751	BN398C LED69/CW L1200 PSU OP	-	6500 K	140 lm/W	6,900 lm
911401521845	BN398C LED69/CW L1200 PSU OP HE	115 °	6500 K	160 lm/W	6,900 lm	911401583851	BN398C LED87/NW L1500 PSU OP	-	4000 K	140 lm/W	8,600 lm
911401521945	BN398C LED20/NW L1200 PSU OP HE	115 °	4000 K	160 lm/W	2,000 lm	911401583951	BN398C LED87/CW L1500 PSU OP	-	6500 K	140 lm/W	8,600 lm
911401522045	BN398C LED20/CW L1200 PSU OP HE	115 °	6500 K	160 lm/W	2,000 lm	911401584051	BN398C LED20/NW L600 PSD OP	-	4000 K	144 lm/W	2,100 lm
911401522145	BN398C LED40/NW L1200 PSD OP HE	115 °	4000 K	160 lm/W	4,000 lm	911401584251	BN398C LED40/NW L1200 PSD OP	-	4000 K	136 lm/W	4,100 lm
911401522245	BN398C LED40/CW L1200 PSD OP HE	115 °	6500 K	160 lm/W	4,000 lm	911401584351	BN398C LED40/CW L1200 PSD OP	-	6500 K	136 lm/W	4,100 lm
911401522345	BN398C LED69/NW L1200 PSD OP HE	115 °	4000 K	160 lm/W	6,900 lm	911401584451	BN398C LED69/NW L1200 PSD OP	-	4000 K	138 lm/W	6,800 lm
911401522445	BN398C LED69/CW L1200 PSD OP HE	115 °	6500 K	160 lm/W	6,900 lm	911401584551	BN398C LED69/CW L1200 PSD OP	-	6500 K	138 lm/W	6,800 lm
911401501571	BN398C LED20/CW L1200 PSU OP	-	6500 K	151 lm/W	2,400 lm	911401584651	BN398C LED87/NW L1500 PSD OP	-	4000 K	139 lm/W	8,500 lm
911401501671	BN398C LED20/NW L1200 PSU OP	-	4000 K	151 lm/W	2,400 lm	911401584751	BN398C LED87/CW L1500 PSD OP	-	6500 K	139 lm/W	8,500 lm
911401583251	BN398C LED20/NW L600 PSU OP	-	4000 K	147 lm/W	2,100 lm	911401584951	BN398C LED20/CW L600 PSU DA	-	6500 K	129 lm/W	2,000 lm
911401583351	BN398C LED20/CW L600 PSU OP	-	6500 K	147 lm/W	2,100 lm	911401585151	BN398C LED40/CW L1200 PSU DA	-	6500 K	141 lm/W	4,100 lm
911401583451	BN398C LED40/NW L1200 PSU OP	-	4000 K	141 lm/W	4,100 lm	911401585251	BN398C LED69/NW L1200 PSU DA	-	4000 K	123 lm/W	6,800 lm

GreenPerform Batten G3 BN398C

Order Code	Full Product Name	光源光 束角度	相關色溫 (標 稱)	光效 (額定) (標準)	光通量
911401585351	BN398C LED69/CW L1200 PSU DA	-	6500 K	123 lm/W	6,800 lm
911401585551	BN398C LED87/CW L1500 PSU DA	-	6500 K	125 lm/W	8,500 lm
911401585651	BN398C LED20/NW L600 PSU WB	-	4000 K	129 lm/W	2,000 lm
911401585751	BN398C LED20/CW L600 PSU WB	-	6500 K	129 lm/W	2,000 lm
911401585851	BN398C LED40/NW L1200 PSU WB	-	4000 K	141 lm/W	4,100 lm
911401585951	BN398C LED40/CW L1200 PSU WB	-	6500 K	141 lm/W	4,100 lm

Order Code	Full Product Name	光源光 束角度	相關色溫 (標 稱)	光效 (額定) (標準)	光通量
911401586051	BN398C LED69/NW L1200 PSU WB	-	4000 K	127 lm/W	7,000 lm
911401586151	BN398C LED69/CW L1200 PSU WB	-	6500 K	127 lm/W	7,000 lm
911401586251	BN398C LED87/NW L1500 PSU WB	-	4000 K	127 lm/W	8,700 lm
911401586351	BN398C LED87/CW L1500 PSU WB	-	6500 K	127 lm/W	8,700 lm
911401587851	BN398C LED40/NW L1200 PSU OP TC	-	4000 K	141 lm/W	4,100 lm

照明技術 (2/2)

Order Code	Full Product Name	光源數	光學裝置類型
911401521545	BN398C LED40/NW L1200 PSU OP HE	144	乳白色
911401521645	BN398C LED40/CW L1200 PSU OP HE	144	乳白色
911401521745	BN398C LED69/NW L1200 PSU OP HE	228	乳白色
911401521845	BN398C LED69/CW L1200 PSU OP HE	228	乳白色
911401521945	BN398C LED20/NW L1200 PSU OP HE	88	乳白色
911401522045	BN398C LED20/CW L1200 PSU OP HE	88	乳白色
911401522145	BN398C LED40/NW L1200 PSD OP HE	144	乳白色
911401522245	BN398C LED40/CW L1200 PSD OP HE	144	乳白色
911401522345	BN398C LED69/NW L1200 PSD OP HE	228	乳白色
911401522445	BN398C LED69/CW L1200 PSD OP HE	228	乳白色
911401501571	BN398C LED20/CW L1200 PSU OP	-	-
911401501671	BN398C LED20/NW L1200 PSU OP	-	-
911401583251	BN398C LED20/NW L600 PSU OP	-	-
911401583351	BN398C LED20/CW L600 PSU OP	-	-
911401583451	BN398C LED40/NW L1200 PSU OP	-	-
911401583551	BN398C LED40/CW L1200 PSU OP	-	-
911401583651	BN398C LED69/NW L1200 PSU OP	-	-
911401583751	BN398C LED69/CW L1200 PSU OP	-	-
911401583851	BN398C LED87/NW L1500 PSU OP	-	-
911401583951	BN398C LED87/CW L1500 PSU OP	-	-
911401584051	BN398C LED20/NW L600 PSD OP	-	-

Order Code	Full Product Name	光源數	光學裝置類型
911401584251	BN398C LED40/NW L1200 PSD OP	-	-
911401584351	BN398C LED40/CW L1200 PSD OP	-	-
911401584451	BN398C LED69/NW L1200 PSD OP	-	-
911401584551	BN398C LED69/CW L1200 PSD OP	-	-
911401584651	BN398C LED87/NW L1500 PSD OP	-	-
911401584751	BN398C LED87/CW L1500 PSD OP	-	-
911401584951	BN398C LED20/CW L600 PSU DA	-	-
911401585151	BN398C LED40/CW L1200 PSU DA	-	-
911401585251	BN398C LED69/NW L1200 PSU DA	-	-
911401585351	BN398C LED69/CW L1200 PSU DA	-	-
911401585551	BN398C LED87/CW L1500 PSU DA	-	-
911401585651	BN398C LED20/NW L600 PSU WB	-	-
911401585751	BN398C LED20/CW L600 PSU WB	-	-
911401585851	BN398C LED40/NW L1200 PSU WB	-	-
911401585951	BN398C LED40/CW L1200 PSU WB	-	-
911401586051	BN398C LED69/NW L1200 PSU WB	-	-
911401586151	BN398C LED69/CW L1200 PSU WB	-	-
911401586251	BN398C LED87/NW L1500 PSU WB	-	-
911401586351	BN398C LED87/CW L1500 PSU WB	-	-
911401587851	BN398C LED40/NW L1200 PSU OP TC	-	-

運轉與電力

Order Code	Full Product Name	耗電量	適合隨機切換
911401521545	BN398C LED40/NW L1200 PSU OP HE	25 W	是
911401521645	BN398C LED40/CW L1200 PSU OP HE	25 W	是
911401521745	BN398C LED69/NW L1200 PSU OP HE	43 W	是
911401521845	BN398C LED69/CW L1200 PSU OP HE	43 W	是
911401521945	BN398C LED20/NW L1200 PSU OP HE	12.6 W	是
911401522045	BN398C LED20/CW L1200 PSU OP HE	12.6 W	是
911401522145	BN398C LED40/NW L1200 PSD OP HE	25 W	是
911401522245	BN398C LED40/CW L1200 PSD OP HE	25 W	是
911401522345	BN398C LED69/NW L1200 PSD OP HE	43 W	是

Order Code	Full Product Name	耗電量	適合隨機切換
911401522445	BN398C LED69/CW L1200 PSD OP HE	43 W	是
911401501571	BN398C LED20/CW L1200 PSU OP	15.8 W	-
911401501671	BN398C LED20/NW L1200 PSU OP	15.8 W	-
911401583251	BN398C LED20/NW L600 PSU OP	14.2 W	-
911401583351	BN398C LED20/CW L600 PSU OP	14.2 W	-
911401583451	BN398C LED40/NW L1200 PSU OP	29 W	-
911401583551	BN398C LED40/CW L1200 PSU OP	29 W	-
911401583651	BN398C LED69/NW L1200 PSU OP	49 W	-
911401583751	BN398C LED69/CW L1200 PSU OP	49 W	-

GreenPerform Batten G3 BN398C

Order Code	Full Product Name	耗電量	適合隨機切換
911401583851	BN398C LED87/NW L1500 PSU OP	61 W	-
911401583951	BN398C LED87/CW L1500 PSU OP	61 W	-
911401584051	BN398C LED20/NW L600 PSD OP	14.5 W	-
911401584251	BN398C LED40/NW L1200 PSD OP	30 W	-
911401584351	BN398C LED40/CW L1200 PSD OP	30 W	-
911401584451	BN398C LED69/NW L1200 PSD OP	49 W	-
911401584551	BN398C LED69/CW L1200 PSD OP	49 W	-
911401584651	BN398C LED87/NW L1500 PSD OP	61 W	-
911401584751	BN398C LED87/CW L1500 PSD OP	61 W	-
911401584951	BN398C LED20/CW L600 PSU DA	15.5 W	-
911401585151	BN398C LED40/CW L1200 PSU DA	29 W	-
911401585251	BN398C LED69/NW L1200 PSU DA	55 W	-

Order Code	Full Product Name	耗電量	適合隨機切換
911401585351	BN398C LED69/CW L1200 PSU DA	55 W	-
911401585551	BN398C LED87/CW L1500 PSU DA	68 W	-
911401585651	BN398C LED20/NW L600 PSU WB	15.5 W	-
911401585751	BN398C LED20/CW L600 PSU WB	15.5 W	-
911401585851	BN398C LED40/NW L1200 PSU WB	29 W	-
911401585951	BN398C LED40/CW L1200 PSU WB	29 W	-
911401586051	BN398C LED69/NW L1200 PSU WB	55 W	-
911401586151	BN398C LED69/CW L1200 PSU WB	55 W	-
911401586251	BN398C LED87/NW L1500 PSU WB	68 W	-
911401586351	BN398C LED87/CW L1500 PSU WB	68 W	-
911401587851	BN398C LED40/NW L1200 PSU OP TC	29 W	-

控制與調光

Order Code	Full Product Name	可調光	最高調光等級
911401521545	BN398C LED40/NW L1200 PSU OP HE	-	不適用
911401521645	BN398C LED40/CW L1200 PSU OP HE	-	不適用
911401521745	BN398C LED69/NW L1200 PSU OP HE	-	不適用
911401521845	BN398C LED69/CW L1200 PSU OP HE	-	不適用
911401521945	BN398C LED20/NW L1200 PSU OP HE	-	不適用
911401522045	BN398C LED20/CW L1200 PSU OP HE	-	不適用
911401522145	BN398C LED40/NW L1200 PSD OP HE	數位可定址照明介面 (DALI)	1%
911401522245	BN398C LED40/CW L1200 PSD OP HE	數位可定址照明介面 (DALI)	1%
911401522345	BN398C LED69/NW L1200 PSD OP HE	數位可定址照明介面 (DALI)	1%
911401522445	BN398C LED69/CW L1200 PSD OP HE	數位可定址照明介面 (DALI)	1%
911401501571	BN398C LED20/CW L1200 PSU OP	否	-
911401501671	BN398C LED20/NW L1200 PSU OP	否	-
911401583251	BN398C LED20/NW L600 PSU OP	否	-
911401583351	BN398C LED20/CW L600 PSU OP	否	-
911401583451	BN398C LED40/NW L1200 PSU OP	否	-
911401583551	BN398C LED40/CW L1200 PSU OP	否	-
911401583651	BN398C LED69/NW L1200 PSU OP	否	-
911401583751	BN398C LED69/CW L1200 PSU OP	否	-
911401583851	BN398C LED87/NW L1500 PSU OP	否	-

Order Code	Full Product Name	可調光	最高調光等級
911401583951	BN398C LED87/CW L1500 PSU OP	否	-
911401584051	BN398C LED20/NW L600 PSD OP	是	-
911401584251	BN398C LED40/NW L1200 PSD OP	是	-
911401584351	BN398C LED40/CW L1200 PSD OP	是	-
911401584451	BN398C LED69/NW L1200 PSD OP	是	-
911401584551	BN398C LED69/CW L1200 PSD OP	是	-
911401584651	BN398C LED87/NW L1500 PSD OP	是	-
911401584751	BN398C LED87/CW L1500 PSD OP	是	-
911401584951	BN398C LED20/CW L600 PSU DA	否	-
911401585151	BN398C LED40/CW L1200 PSU DA	否	-
911401585251	BN398C LED69/NW L1200 PSU DA	否	-
911401585351	BN398C LED69/CW L1200 PSU DA	否	-
911401585551	BN398C LED87/CW L1500 PSU DA	否	-
911401585651	BN398C LED20/NW L600 PSU WB	否	-
911401585751	BN398C LED20/CW L600 PSU WB	否	-
911401585851	BN398C LED40/NW L1200 PSU WB	否	-
911401585951	BN398C LED40/CW L1200 PSU WB	否	-
911401586051	BN398C LED69/NW L1200 PSU WB	否	-
911401586151	BN398C LED69/CW L1200 PSU WB	否	-
911401586251	BN398C LED87/NW L1500 PSU WB	否	-
911401586351	BN398C LED87/CW L1500 PSU WB	否	-
911401587851	BN398C LED40/NW L1200 PSU OP TC	否	-

機械與外罩

Order Code	Full Product Name	光學罩類型	外罩色彩
911401521545	BN398C LED40/NW L1200 PSU OP HE	乳白色漫射體位於聚碳酸酯樹脂外罩中	白色 RAL9010
911401521645	BN398C LED40/CW L1200 PSU OP HE	乳白色漫射體位於聚碳酸酯樹脂外罩中	白色 RAL9010
911401521745	BN398C LED69/NW L1200 PSU OP HE	乳白色漫射體位於聚碳酸酯樹脂外罩中	白色 RAL9010

Order Code	Full Product Name	光學罩類型	外罩色彩
911401521845	BN398C LED69/CW L1200 PSU OP HE	乳白色漫射體位於聚碳酸酯樹脂外罩中	白色 RAL9010
911401521945	BN398C LED20/NW L1200 PSU OP HE	乳白色漫射體位於聚碳酸酯樹脂外罩中	白色 RAL9010
911401522045	BN398C LED20/CW L1200 PSU OP HE	乳白色漫射體位於聚碳酸酯樹脂外罩中	白色 RAL9010

GreenPerform Batten G3 BN398C

Order Code	Full Product Name	光學罩類型	外罩色彩
911401522145	BN398C LED40/NW L1200 PSD OP HE	乳白色漫射體位於聚碳酸酯樹脂外 蓋中	白色 RAL9010
911401522245	BN398C LED40/CW L1200 PSD OP HE	乳白色漫射體位於聚碳酸酯樹脂外 蓋中	白色 RAL9010
911401522345	BN398C LED69/NW L1200 PSD OP HE	乳白色漫射體位於聚碳酸酯樹脂外 蓋中	白色 RAL9010
911401522445	BN398C LED69/CW L1200 PSD OP HE	乳白色漫射體位於聚碳酸酯樹脂外 蓋中	白色 RAL9010
911401501571	BN398C LED20/CW L1200 PSU OP	聚乙烯甲基丙烯酸酯鈹/外蓋	白色 RAL 9003
911401501671	BN398C LED20/NW L1200 PSU OP	聚乙烯甲基丙烯酸酯鈹/外蓋	白色 RAL 9003
911401583251	BN398C LED20/NW L600 PSU OP	聚乙烯甲基丙烯酸酯鈹/外蓋	白色 RAL 9003
911401583351	BN398C LED20/CW L600 PSU OP	聚乙烯甲基丙烯酸酯鈹/外蓋	白色 RAL 9003
911401583451	BN398C LED40/NW L1200 PSU OP	聚乙烯甲基丙烯酸酯鈹/外蓋	白色 RAL 9003
911401583551	BN398C LED40/CW L1200 PSU OP	聚乙烯甲基丙烯酸酯鈹/外蓋	白色 RAL 9003
911401583651	BN398C LED69/NW L1200 PSU OP	聚乙烯甲基丙烯酸酯鈹/外蓋	白色 RAL 9003
911401583751	BN398C LED69/CW L1200 PSU OP	聚乙烯甲基丙烯酸酯鈹/外蓋	白色 RAL 9003
911401583851	BN398C LED87/NW L1500 PSU OP	聚乙烯甲基丙烯酸酯鈹/外蓋	白色 RAL 9003
911401583951	BN398C LED87/CW L1500 PSU OP	聚乙烯甲基丙烯酸酯鈹/外蓋	白色 RAL 9003
911401584051	BN398C LED20/NW L600 PSD OP	聚乙烯甲基丙烯酸酯鈹/外蓋	白色 RAL 9003
911401584251	BN398C LED40/NW L1200 PSD OP	聚乙烯甲基丙烯酸酯鈹/外蓋	白色 RAL 9003
911401584351	BN398C LED40/CW L1200 PSD OP	聚乙烯甲基丙烯酸酯鈹/外蓋	白色 RAL 9003
911401584451	BN398C LED69/NW L1200 PSD OP	聚乙烯甲基丙烯酸酯鈹/外蓋	白色 RAL 9003

Order Code	Full Product Name	光學罩類型	外罩色彩
911401584551	BN398C LED69/CW L1200 PSD OP	聚乙烯甲基丙烯酸酯鈹/外蓋	白色 RAL 9003
911401584651	BN398C LED87/NW L1500 PSD OP	聚乙烯甲基丙烯酸酯鈹/外蓋	白色 RAL 9003
911401584751	BN398C LED87/CW L1500 PSD OP	聚乙烯甲基丙烯酸酯鈹/外蓋	白色 RAL 9003
911401584951	BN398C LED20/CW L600 PSU DA	聚乙烯甲基丙烯酸酯鈹/外蓋	白色 RAL 9003
911401585151	BN398C LED40/CW L1200 PSU DA	聚乙烯甲基丙烯酸酯鈹/外蓋	白色 RAL 9003
911401585251	BN398C LED69/NW L1200 PSU DA	聚乙烯甲基丙烯酸酯鈹/外蓋	白色 RAL 9003
911401585351	BN398C LED69/CW L1200 PSU DA	聚乙烯甲基丙烯酸酯鈹/外蓋	白色 RAL 9003
911401585551	BN398C LED87/CW L1500 PSU DA	聚乙烯甲基丙烯酸酯鈹/外蓋	白色 RAL 9003
911401585651	BN398C LED20/NW L600 PSU WB	聚乙烯甲基丙烯酸酯鈹/外蓋	白色 RAL 9003
911401585751	BN398C LED20/CW L600 PSU WB	聚乙烯甲基丙烯酸酯鈹/外蓋	白色 RAL 9003
911401585851	BN398C LED40/NW L1200 PSU WB	聚乙烯甲基丙烯酸酯鈹/外蓋	白色 RAL 9003
911401585951	BN398C LED40/CW L1200 PSU WB	聚乙烯甲基丙烯酸酯鈹/外蓋	白色 RAL 9003
911401586051	BN398C LED69/NW L1200 PSU WB	聚乙烯甲基丙烯酸酯鈹/外蓋	白色 RAL 9003
911401586151	BN398C LED69/CW L1200 PSU WB	聚乙烯甲基丙烯酸酯鈹/外蓋	白色 RAL 9003
911401586251	BN398C LED87/NW L1500 PSU WB	聚乙烯甲基丙烯酸酯鈹/外蓋	白色 RAL 9003
911401586351	BN398C LED87/CW L1500 PSU WB	聚乙烯甲基丙烯酸酯鈹/外蓋	白色 RAL 9003
911401587851	BN398C LED40/NW L1200 PSU OP TC	聚乙烯甲基丙烯酸酯鈹/外蓋	白色 RAL 9003

認證與應用

Order Code	Full Product Name	環境溫度範		
		圖	易燃性標誌	灼熱絲測試
911401521545	BN398C LED40/NW L1200 PSU OP HE	0 至 +40 °C	-	溫度 650°C、 持續時間 30 秒
911401521645	BN398C LED40/CW L1200 PSU OP HE	0 至 +40 °C	-	溫度 650°C、 持續時間 30 秒
911401521745	BN398C LED69/NW L1200 PSU OP HE	0 至 +40 °C	-	溫度 650°C、 持續時間 30 秒

Order Code	Full Product Name	環境溫度範		
		圖	易燃性標誌	灼熱絲測試
911401521845	BN398C LED69/CW L1200 PSU OP HE	0 至 +40 °C	-	溫度 650°C、 持續時間 30 秒
911401521945	BN398C LED20/NW L1200 PSU OP HE	0 至 +40 °C	-	溫度 650°C、 持續時間 30 秒
911401522045	BN398C LED20/CW L1200 PSU OP HE	0 至 +40 °C	-	溫度 650°C、 持續時間 30 秒

GreenPerform Batten G3 BN398C

Order Code	Full Product Name	環境溫度範		易燃性標誌	灼熱絲測試
		圖			
911401522145	BN398C LED40/NW L1200 PSD OP HE	0 至 +40 °C	-	-	溫度 650°C、持續時間 30 秒
911401522245	BN398C LED40/CW L1200 PSD OP HE	0 至 +40 °C	-	-	溫度 650°C、持續時間 30 秒
911401522345	BN398C LED69/NW L1200 PSD OP HE	0 至 +40 °C	-	-	溫度 650°C、持續時間 30 秒
911401522445	BN398C LED69/CW L1200 PSD OP HE	0 至 +40 °C	-	-	溫度 650°C、持續時間 30 秒
911401501571	BN398C LED20/CW L1200 PSU OP	-20 至 +40 °C		用於安裝於通常易燃的表面	-
911401501671	BN398C LED20/NW L1200 PSU OP	-20 至 +40 °C		用於安裝於通常易燃的表面	-
911401583251	BN398C LED20/NW L600 PSU OP	-20 至 +40 °C		用於安裝於通常易燃的表面	-
911401583351	BN398C LED20/CW L600 PSU OP	-20 至 +40 °C		用於安裝於通常易燃的表面	-
911401583451	BN398C LED40/NW L1200 PSU OP	-20 至 +40 °C		用於安裝於通常易燃的表面	-
911401583551	BN398C LED40/CW L1200 PSU OP	-20 至 +40 °C		用於安裝於通常易燃的表面	-
911401583651	BN398C LED69/NW L1200 PSU OP	-20 至 +40 °C		用於安裝於通常易燃的表面	-
911401583751	BN398C LED69/CW L1200 PSU OP	-20 至 +40 °C		用於安裝於通常易燃的表面	-
911401583851	BN398C LED87/NW L1500 PSU OP	-20 至 +40 °C		用於安裝於通常易燃的表面	-
911401583951	BN398C LED87/CW L1500 PSU OP	-20 至 +40 °C		用於安裝於通常易燃的表面	-
911401584051	BN398C LED20/NW L600 PSD OP	-20 至 +40 °C		用於安裝於通常易燃的表面	-
911401584251	BN398C LED40/NW L1200 PSD OP	-20 至 +40 °C		用於安裝於通常易燃的表面	-
911401584351	BN398C LED40/CW L1200 PSD OP	-20 至 +40 °C		用於安裝於通常易燃的表面	-

Order Code	Full Product Name	環境溫度範		易燃性標誌	灼熱絲測試
		圖			
911401584451	BN398C LED69/NW L1200 PSD OP	-20 至 +40 °C		用於安裝於通常易燃的表面	-
911401584551	BN398C LED69/CW L1200 PSD OP	-20 至 +40 °C		用於安裝於通常易燃的表面	-
911401584651	BN398C LED87/NW L1500 PSD OP	-20 至 +40 °C		用於安裝於通常易燃的表面	-
911401584751	BN398C LED87/CW L1500 PSD OP	-20 至 +40 °C		用於安裝於通常易燃的表面	-
911401584951	BN398C LED20/CW L600 PSU DA	-20 至 +40 °C		用於安裝於通常易燃的表面	-
911401585151	BN398C LED40/CW L1200 PSU DA	-20 至 +40 °C		用於安裝於通常易燃的表面	-
911401585251	BN398C LED69/NW L1200 PSU DA	-20 至 +40 °C		用於安裝於通常易燃的表面	-
911401585351	BN398C LED69/CW L1200 PSU DA	-20 至 +40 °C		用於安裝於通常易燃的表面	-
911401585551	BN398C LED87/CW L1500 PSU DA	-20 至 +40 °C		用於安裝於通常易燃的表面	-
911401585651	BN398C LED20/NW L600 PSU WB	-20 至 +40 °C		用於安裝於通常易燃的表面	-
911401585751	BN398C LED20/CW L600 PSU WB	-20 至 +40 °C		用於安裝於通常易燃的表面	-
911401585851	BN398C LED40/NW L1200 PSU WB	-20 至 +40 °C		用於安裝於通常易燃的表面	-
911401585951	BN398C LED40/CW L1200 PSU WB	-20 至 +40 °C		用於安裝於通常易燃的表面	-
911401586051	BN398C LED69/NW L1200 PSU WB	-20 至 +40 °C		用於安裝於通常易燃的表面	-
911401586151	BN398C LED69/CW L1200 PSU WB	-20 至 +40 °C		用於安裝於通常易燃的表面	-
911401586251	BN398C LED87/NW L1500 PSU WB	-20 至 +40 °C		用於安裝於通常易燃的表面	-
911401586351	BN398C LED87/CW L1500 PSU WB	-20 至 +40 °C		用於安裝於通常易燃的表面	-
911401587851	BN398C LED40/NW L1200 PSU OP TC	-20 至 +40 °C		用於安裝於通常易燃的表面	-

初始效能 (符合 IEC 標準)

Order Code	Full Product Name	點火色度	光通量容限
911401521545	BN398C LED40/NW L1200 PSU OP HE	(0.386,0.386) SDCM<5	-10% / +10%
911401521645	BN398C LED40/CW L1200 PSU OP HE	(0.317,0.334) SDCM<5	-10% / +10%
911401521745	BN398C LED69/NW L1200 PSU OP HE	(0.386,0.386) SDCM<5	-10% / +10%
911401521845	BN398C LED69/CW L1200 PSU OP HE	(0.317,0.334) SDCM<5	-10% / +10%

Order Code	Full Product Name	點火色度	光通量容限
911401521945	BN398C LED20/NW L1200 PSU OP HE	(0.386,0.386) SDCM<5	-10% / +10%
911401522045	BN398C LED20/CW L1200 PSU OP HE	(0.317,0.334) SDCM<5	-10% / +10%
911401522145	BN398C LED40/NW L1200 PSD OP HE	(0.386,0.386) SDCM<5	-10% / +10%
911401522245	BN398C LED40/CW L1200 PSD OP HE	(0.317,0.334) SDCM<5	-10% / +10%

GreenPerform Batten G3 BN398C

Order Code	Full Product Name	點火色度	光通量容限
911401522345	BN398C LED69/NW L1200 PSD OP HE	(0.386,0.386) SDCM<5	-10% / +10%
911401522445	BN398C LED69/CW L1200 PSD OP HE	(0.317,0.334) SDCM<5	-10% / +10%
911401501571	BN398C LED20/CW L1200 PSU OP	SDCM<5	+/-10%
911401501671	BN398C LED20/NW L1200 PSU OP	SDCM<5	+/-10%
911401583251	BN398C LED20/NW L600 PSU OP	SDCM<5	+/-10%
911401583351	BN398C LED20/CW L600 PSU OP	SDCM<5	+/-10%
911401583451	BN398C LED40/NW L1200 PSU OP	SDCM<5	+/-10%
911401583551	BN398C LED40/CW L1200 PSU OP	SDCM<5	+/-10%
911401583651	BN398C LED69/NW L1200 PSU OP	SDCM<5	+/-10%
911401583751	BN398C LED69/CW L1200 PSU OP	SDCM<5	+/-10%
911401583851	BN398C LED87/NW L1500 PSU OP	SDCM<5	+/-10%
911401583951	BN398C LED87/CW L1500 PSU OP	SDCM<5	+/-10%
911401584051	BN398C LED20/NW L600 PSD OP	SDCM<5	+/-10%
911401584251	BN398C LED40/NW L1200 PSD OP	SDCM<5	+/-10%
911401584351	BN398C LED40/CW L1200 PSD OP	SDCM<5	+/-10%
911401584451	BN398C LED69/NW L1200 PSD OP	SDCM<5	+/-10%

Order Code	Full Product Name	點火色度	光通量容限
911401584551	BN398C LED69/CW L1200 PSD OP	SDCM<5	+/-10%
911401584651	BN398C LED87/NW L1500 PSD OP	SDCM<5	+/-10%
911401584751	BN398C LED87/CW L1500 PSD OP	SDCM<5	+/-10%
911401584951	BN398C LED20/CW L600 PSU DA	SDCM<5	+/-10%
911401585151	BN398C LED40/CW L1200 PSU DA	SDCM<5	+/-10%
911401585251	BN398C LED69/NW L1200 PSU DA	SDCM<5	+/-10%
911401585351	BN398C LED69/CW L1200 PSU DA	SDCM<5	+/-10%
911401585551	BN398C LED87/CW L1500 PSU DA	SDCM<5	+/-10%
911401585651	BN398C LED20/NW L600 PSU WB	SDCM<5	+/-10%
911401585751	BN398C LED20/CW L600 PSU WB	SDCM<5	+/-10%
911401585851	BN398C LED40/NW L1200 PSU WB	SDCM<5	+/-10%
911401585951	BN398C LED40/CW L1200 PSU WB	SDCM<5	+/-10%
911401586051	BN398C LED69/NW L1200 PSU WB	SDCM<5	+/-10%
911401586151	BN398C LED69/CW L1200 PSU WB	SDCM<5	+/-10%
911401586251	BN398C LED87/NW L1500 PSU WB	SDCM<5	+/-10%
911401586351	BN398C LED87/CW L1500 PSU WB	SDCM<5	+/-10%
911401587851	BN398C LED40/NW L1200 PSU OP	SDCM<5	+/-10%
	TC		

