



# Reliable and flexible

## GreenPerform Batten G3 BN398C

GreenPerform batten BN398C is a cost competitive linear solution with good performance and multiple lumen output for retail and industry applications. It offers surface mount and suspension installations to cater for different mounting options. Its multiple optic designs accommodate different applications as well.

### Benefits

- High system efficacy with better energy saving
- Multiple optics for different applications
- Connected for future proof

### Features

- System efficiency up to 140lm/W
- Wide and batwing beams available to fit different lighting applications
- DALI and Interact are available for easy control

### Application

- Food & large retail
- Warehouse
- Factory
- Indoor public area

### Specifications

<b>Mounting type</b>	Suspended Ceiling
<b>Light Source</b>	LED
<b>Mains Voltage</b>	220-240V / 50-60Hz
<b>Dimming</b>	PSU PSD POE WIA

<b>Material</b>	Housing: SPCC Cover: PMMA
<b>Main color of the luminaire</b>	WH: RAL 9003
<b>Lumen maintenance at median useful life</b>	L70B50 50.000h
<b>Luminous flux</b>	2000lm~8700lm
<b>Luminaire efficacy</b>	Up to 150lm/W

# GreenPerform Batten G3 BN398C

Correlated color temperature - CCT	4000K/6500K
Color Rendering index - CRI	80
Beam angle	WB
Protection Class	Safety class I; Safety class III - POE
IEC61140	

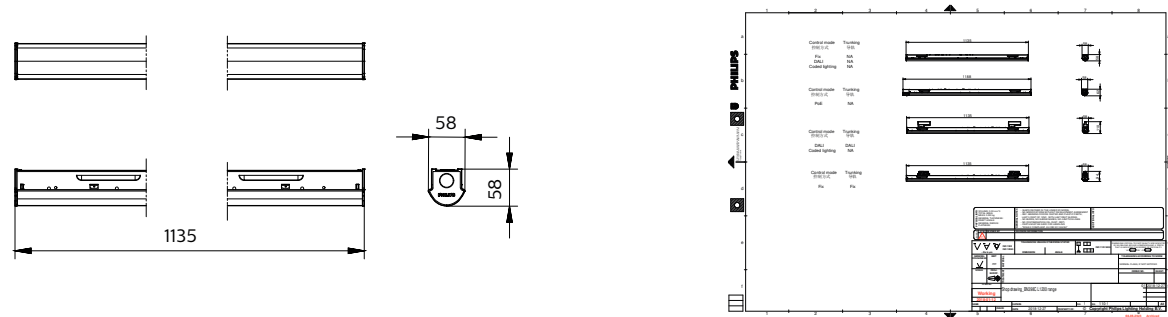
Mechanical impact protection	IK03
Ingress protection	IP20
Overall length	600mm
	1200mm
	1500mm

## Versions



RTP-OF-BN398-PSU-HE

## Dimensional drawing



# GreenPerform Batten G3 BN398C

## Light Technical

Correlated Color Temperature (Nom)	6500 K
Color rendering index (CRI)	>80

## Operating and Electrical

Protection class IEC	Safety class I
Input Voltage	220-240 V
Line Frequency	50 or 60 Hz

## Mechanical and Housing

Mech. impact protection code	IK03
Ingress protection code	IP20

## Approval and Application

CE mark	Yes
ENEC mark	-

## General Information

Order Code	Full Product Name	Driver included	Gear	Number of gear units
911401522045	BN398C LED20/CW L1200 PSU OP HE	Yes	EBR	1 unit
911401583551	BN398C LED40/CW L1200 PSU OP	-	-	-
911401584351	BN398C LED40/CW L1200 PSD OP	-	-	-

## Light Technical (1/2)

Order Code	Full Product Name	Beam angle of light source	Luminous Efficacy (rated) (Nom)	Luminous Flux	Number of light sources
911401522045	BN398C LED20/CW L1200 PSU OP HE	115 degree(s)	160 lm/W	2,000 lm	88
911401583551	BN398C LED40/CW L1200 PSU OP	-	141 lm/W	4,100 lm	-

Order Code	Full Product Name	Beam angle of light source	Luminous Efficacy (rated) (Nom)	Luminous Flux	Number of light sources
911401584351	BN398C LED40/CW L1200 PSD OP	-	136 lm/W	4,100 lm	-

## Light Technical (2/2)

Order Code	Full Product Name	Optic type
911401522045	BN398C LED20/CW L1200 PSU OP HE	Opal
911401583551	BN398C LED40/CW L1200 PSU OP	-

Order Code	Full Product Name	Optic type
911401584351	BN398C LED40/CW L1200 PSD OP	-

## Operating and Electrical

Order Code	Full Product Name	Power Consumption	Suitable for random switching
911401522045	BN398C LED20/CW L1200 PSU OP HE	12.6 W	Yes
911401583551	BN398C LED40/CW L1200 PSU OP	29 W	-

Order Code	Full Product Name	Power Consumption	Suitable for random switching
911401584351	BN398C LED40/CW L1200 PSD OP	30 W	-

## Controls and Dimming

Order Code	Full Product Name	Dimmable	Maximum dim level
911401522045	BN398C LED20/CW L1200 PSU OP HE	-	Not applicable
911401583551	BN398C LED40/CW L1200 PSU OP	No	-

Order Code	Full Product Name	Dimmable	Maximum dim level
911401584351	BN398C LED40/CW L1200 PSD OP	Yes	-

# GreenPerform Batten G3 BN398C

## Mechanical and Housing

Order Code	Full Product Name	Optical cover type	Housing Color
911401522045	BN398C LED20/CW L1200 PSU OP HE	Opal diffuser in polycarbonate cover	White RAL9010
911401583551	BN398C LED40/CW L1200 PSU OP	Polymethyl methacrylate bowl/cover	White RAL 9003

Order Code	Full Product Name	Optical cover type	Housing Color
911401584351	BN398C LED40/CW L1200 PSD OP	Polymethyl methacrylate bowl/cover	White RAL 9003

## Approval and Application

Order Code	Full Product Name	Ambient temperature range	Flammability mark	Glow-wire test
911401522045	BN398C LED20/CW L1200 PSU OP HE	0 to +40 °C	-	Temperature 650 °C, duration 30 s
911401583551	BN398C LED40/CW L1200 PSU OP	-20 to +40 °C	For mounting on normally flammable surfaces	-

Order Code	Full Product Name	Ambient temperature range	Flammability mark	Glow-wire test
911401584351	BN398C LED40/CW L1200 PSD OP	-20 to +40 °C	For mounting on normally flammable surfaces	-

## Initial Performance (IEC Compliant)

Order Code	Full Product Name	Initial chromaticity	Luminous flux tolerance
911401522045	BN398C LED20/CW L1200 PSU OP HE	(0.317,0.334) SDCM<5	-10% / +10%
911401583551	BN398C LED40/CW L1200 PSU OP	SDCM<5	+/-10%

Order Code	Full Product Name	Initial chromaticity	Luminous flux tolerance
911401584351	BN398C LED40/CW L1200 PSD OP	SDCM<5	+/-10%

