



# An Easier Way to More Savings

## Essential Smartbright LED Batten

Whether for a new building or renovation of an existing space, customers want lighting solutions that provide quality of light and substantial energy and maintenance savings. This new batten range of LED products can be used to replace traditional battens with fluorescent lamps. The process of selecting, installing and maintaining is so easy – it's a simple switch

### Benefits

- Slim and trunkable, integrated design
- To replace T5 Essential Batten TCH086/084
- Polycarbonate housing with one pc extrusion process
- Semi-transparent endcap eliminates the black spot entirely in trunking
- Different type can mix and match, flexible in a long length
- Sockets and accessories compatible with BN066C & TCH086 EV

### Features

- One piece PC extrusion housing, Single piece integral design for better aesthetics
- Transparent end cap, Enables continuous light line without black spots up to 10pcs
- CRI 80, SDCM < 7, 80lm/W, Superior light quality combined with good energy savings
- Slim profile, Ideal for task lighting / cove lighting applications
- Slim and narrow end cap, Fits the cove or shelf more easily
- Uniform Light, Optimal optical design to ensure no spottiness
- L70 20k hours, Reliable long lasting solution
- 4 lengths, 3 colors, Increased number of options for easy application

### Application

- Indirect lighting: Shelf, cove, back light box, ambient
- Direct lighting: Convenient store, Long distance linear lighting

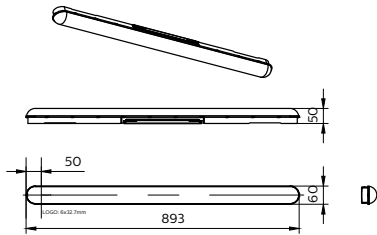
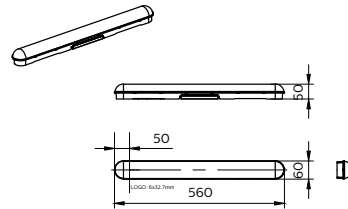
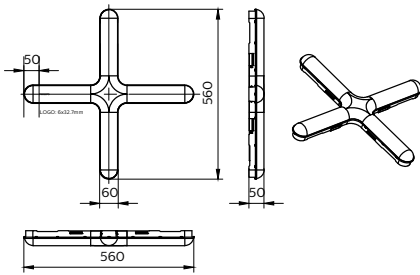
# Essential Smartbright LED Batten

## Versions



Essential SmartBright BN017C

## Dimensional drawing



## Product details

Essential SmartBright BN017C



Essential SmartBright BN017C



# Essential Smartbright LED Batten

## Product details

### Essential SmartBright BN017C



#### General Information

Driver included	Yes
Gear	-
Number of gear units	1 unit

#### Light Technical

Beam angle of light source	110 degree(s)
Color rendering index (CRI)	80
Luminous Efficacy (rated) (Nom)	100 lm/W
Number of light sources	1
Optic type	Wide beam

#### Operating and Electrical

Protection class IEC	Safety class II
Input Voltage	220 V
Line Frequency	60 Hz
Suitable for random switching	Not applicable

#### Controls and Dimming

Dimmable	-
Maximum dim level	Not applicable

#### Mechanical and Housing

Optical cover type	Opal
Housing Color	White
Mech. impact protection code	IK03
Ingress protection code	IP20

#### Approval and Application

Ambient temperature range	-20 to +40 °C
CE mark	No
ENEC mark	-
Flammability mark	For mounting on normally flammable surfaces
Glow-wire test	Temperature 650 °C, duration 30 s

#### Initial Performance (IEC Compliant)

Luminous flux tolerance	+/-10%
-------------------------	--------

#### Light Technical

Order Code	Full Product Name	Correlated Color Temperature (Nom)	Luminous Flux
911401805987	BN017C LED30/840 2ft	4000 K	3,000 lm
911401806087	BN017C LED30/857 2ft	5700 K	3,000 lm
911401806387	BN017C LED50/840 3ft	4000 K	5,000 lm
911401806487	BN017C LED50/857 3ft	5700 K	5,000 lm
911401806187	BN017C LED60/840 X 2ft	4000 K	6,000 lm
911401806287	BN017C LED60/857 X 2ft	5700 K	6,000 lm

## Operating and Electrical

## Essential Smartbright LED Batten

Order Code	Full Product Name	Power Consumption
911401805987	BN017C LED30/840 2ft	30 W
911401806087	BN017C LED30/857 2ft	30 W
911401806387	BN017C LED50/840 3ft	50 W

Order Code	Full Product Name	Power Consumption
911401806487	BN017C LED50/857 3ft	50 W
911401806187	BN017C LED60/840 X 2ft	60 W
911401806287	BN017C LED60/857 X 2ft	60 W

### Initial Performance (IEC Compliant)

Order Code	Full Product Name	Initial chromaticity
911401805987	BN017C LED30/840 2ft	(0.38, 0.38) SDCM<7
911401806087	BN017C LED30/857 2ft	(0.33, 0.34) SDCM<7
911401806387	BN017C LED50/840 3ft	(0.38, 0.38) SDCM<7

Order Code	Full Product Name	Initial chromaticity
911401806487	BN017C LED50/857 3ft	(0.33, 0.34) SDCM<7
911401806187	BN017C LED60/840 X 2ft	(0.38, 0.38) SDCM<7
911401806287	BN017C LED60/857 X 2ft	(0.33, 0.34) SDCM<7

