



Dots that Ignite Creativity

UniDot G2

UniDot G2 is a surface mounted, exterior-rated and compact sized architectural LED direct view dot lighting luminaire that is designed for façade and outdoor lighting applications. The robust mechanical and unique optical covers make UniDot G2 ideal for building facades, bridges, theaters, amusement parks and recreational centers. Available in white, monochromatic colors, RGB, RGBW and tunable white. Three optical covers options and DMX control interface available to give architects and designers the freedom to explore a wide range of concepts and design with no limitations.

Benefits

- Low and High Power LEDs versions to fit all users needs.
- Three different optical covers that to fit all direct view applications.
- Robust Design and IP66 rating for outdoor use.
- Available in DMX512 control interface option.
- Through wiring for power and DMX data via IP67 connectors.

Features

- Three Sizes and Low power and High Power LEDs.
- Standard RGBW, RGB, 2700K, 3000K and 4000K.
- Optional 5000K, Monochromatic Colors and Tunable White.
- Clear flat, opal and diamond spherical optical covers options.

Application

- Bridges, Monuments, Facades
- Landscape
- Parks and Plazas

UniDot G2

Versions



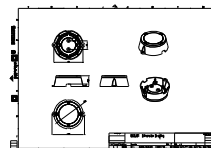
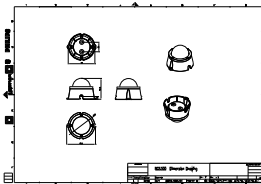
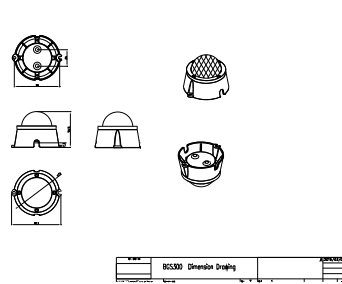
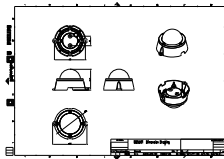
BGS301 G2 CFC

BGS300 G2 OSC

BGS300 G2 DSC

BGS301 G2 OSC

Dimensional drawing



Product details

UniDot G2 detailed photo



UniDot G2 detailed photo



UniDot G2

Product details



UniDot G2 detailed photo



UniDot G2 detailed photo



UniDot G2 detailed photo



UniDot G2 detailed photo



UniDot G2 detailed photo



UniDot G2 detailed photo

General Information

Driver included	No
Light source replaceable	No

Light Technical

Color rendering index (CRI)	80
-----------------------------	----

Controls and Dimming

Dimmable	No
----------	----

Mechanical and Housing

Housing Color	Dark gray
Mech. impact protection code	IK06
Ingress protection code	IP66
Standard tilt angle side entry	-
Standard tilt angle posttop	-

Approval and Application

CE mark	Yes
Flammability mark	For mounting on normally flammable surfaces

Light Technical

Order Code	Full Product Name	Luminaire light beam spread	Light source color	Correlated Color Temperature (Nom)	Luminous Flux
911401752442	BGS301 G2 30LEDLP 27K 24V CFC	110°	Warm white	2700 K	413 lm
911401752222	BGS300 G2 12LEDLP 27K 24V OSC	130°	Warm white	2700 K	181 lm
911401752342	BGS300 G2 12LEDLP 40K 24V OSC	130°	Neutral white	4000 K	192 lm
911401752242	BGS300 G2 12LEDLP 27K 24V DSC	-	Warm white	2700 K	210 lm
911401752302	BGS300 G2 12LEDLP 30K 24V DSC	-	Warm white	3000 K	210 lm
911401752202	BGS300 G2 12LEDLP 27K 24V CFC	110°	Warm white	2700 K	206 lm
911401752322	BGS300 G2 12LEDLP 40K 24V CFC	110°	Neutral white	4000 K	218 lm
911401752522	BGS301 G2 30LEDLP 30K 24V OSC	150°	Warm white	3000 K	304 lm

Operating and Electrical

Order Code	Full Product Name	Power Consumption
911401752442	BGS301 G2 30LEDLP 27K 24V CFC	6 W
911401752222	BGS300 G2 12LEDLP 27K 24V OSC	3 W
911401752342	BGS300 G2 12LEDLP 40K 24V OSC	3 W
911401752242	BGS300 G2 12LEDLP 27K 24V DSC	3 W

Order Code	Full Product Name	Power Consumption
911401752302	BGS300 G2 12LEDLP 30K 24V DSC	3 W
911401752202	BGS300 G2 12LEDLP 27K 24V CFC	3 W
911401752322	BGS300 G2 12LEDLP 40K 24V CFC	3 W
911401752522	BGS301 G2 30LEDLP 30K 24V OSC	6 W

Mechanical and Housing

Order Code	Full Product Name	Optical cover type
911401752442	BGS301 G2 30LEDLP 27K 24V CFC	Polycarbonate bowl/cover flat
911401752222	BGS300 G2 12LEDLP 27K 24V OSC	Polycarbonate bowl/cover spherical
911401752342	BGS300 G2 12LEDLP 40K 24V OSC	Polycarbonate bowl/cover spherical
911401752242	BGS300 G2 12LEDLP 27K 24V DSC	Polycarbonate bowl/cover spherical

Order Code	Full Product Name	Optical cover type
911401752302	BGS300 G2 12LEDLP 30K 24V DSC	Polycarbonate bowl/cover spherical
911401752202	BGS300 G2 12LEDLP 27K 24V CFC	Polycarbonate bowl/cover flat
911401752322	BGS300 G2 12LEDLP 40K 24V CFC	Polycarbonate bowl/cover flat
911401752522	BGS301 G2 30LEDLP 30K 24V OSC	Polycarbonate bowl/cover spherical

