



Get your city ready for the future with DigiStreet

DigiStreet

Developed with the aim to become your long-term partner, the system-ready architecture of DigiStreet enables you to enjoy the benefits of connected lighting systems today and also gets the city ready for the innovations to come. The two sockets enable you to connect directly to the CityTouch system and are also prepared to connect you to the future innovations of IoT. Next to this, each individual luminaire is uniquely identifiable, thanks to the Service tag application. With a simple scan of the QR code, placed on the inside of the mast door, you gain instant access to the luminaire configuration, making maintenance and programming operations faster and easier, at all stages of the luminaire's lifetime. DigiStreet is also equipped with dedicated light recipes that: 1) maintain an optimal ecosystem for bats or 2) preserve a dark night sky.

Benefits

- Prepared for the future: it is easy to upgrade directly after installation or later with future CMS nodes and sensors to enable new functionalities
- Large availability of lens optics to match international road and street geometries
- Equipped with a service tag, a QR-based identification system that makes each luminaire uniquely identifiable and provides maintenance, installation and spare part information

Features

- Easy luminaire identification due to the Service tag
- High efficacy up to 161 lm/W
- Choice of 30+ different beams and different internal louvres
- Surge protection, 10 kV
- L-tune tool available
- Lifetime 100 Khrs up to L96 at Tq +25 °C
- Internal louvre (optional)

Application

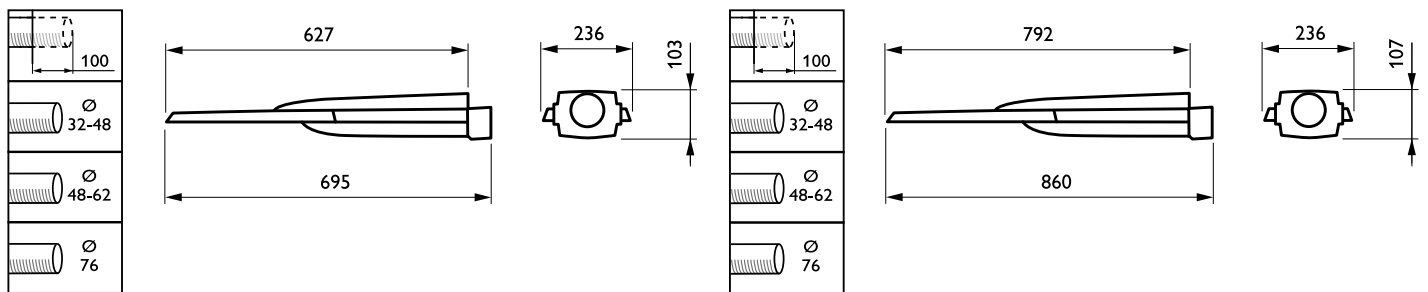
- Traffic routes and main access road
- Urban and residential areas
- City centres and high streets
- Cycle paths, footpaths and pedestrian crossings

Versions

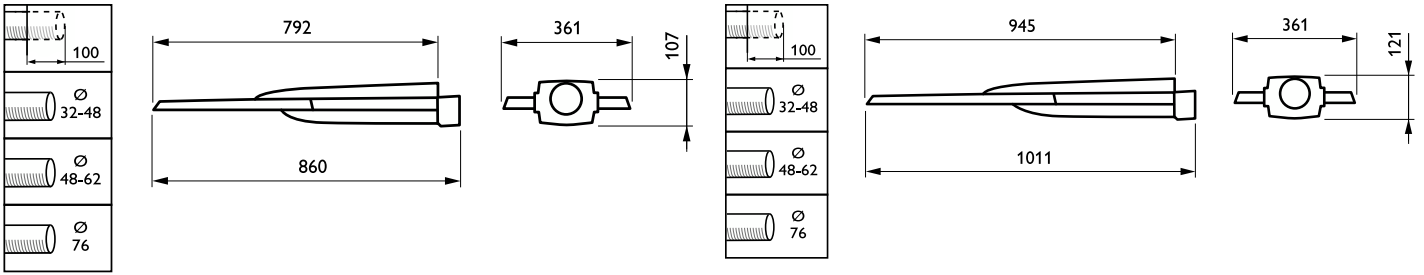


Digistreet-BGP763-DP04

Dimensional drawing



Dimensional drawing



Product details

Digistreet-BGP760-DP06.tif



Digistreet-BGP760-DP09.tif



Digistreet-BGP760-DP10.tif



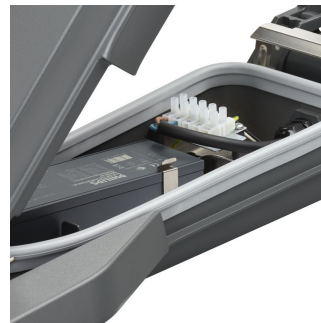
Digistreet-BGP760-DP11.tif



Digistreet-BGP761-DP17.tif

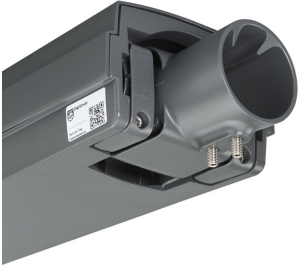


Digistreet-BGP761-DP18.tif



Product details

Digistreet-BGP761-DP19.tif



Digistreet-BGP761-DP20.tif



Digistreet-BGP761-DP21.tif



Digistreet-BGP761-DP22.tif



Digistreet-BGP761-DP23.tif



Digistreet-BGP761-DP24.tif



Digistreet-BGP761-DP25.tif



Digistreet-BGP761-DP26.tif



General Information	
Driver included	Yes
Light source replaceable	Yes
Service Tag	Yes
Light Technical	
Light source colour	740 neutral white
Correlated Colour Temperature (Nom)	4000 K
Colour rendering index (CRI)	70
Upwards light output ratio	0
Operating and Electrical	
Surge Protection (Common/Differential)	Surge protection level until 6 kV differential mode and 8 kV common mode
Controls and Dimming	
Dimmable	No
Maximum dim level	Not applicable
Mechanical and Housing	
Optical cover type	Flat glass
Housing Colour	Dark grey
Mech. impact protection code	IK09
Ingress protection code	IP66
Standard tilt angle side entry	0°
Standard tilt angle post-top	0°
Approval and Application	
CE mark	Yes
Flammability mark	-

General Information

Order Code	Full Product Name	Gear	Lamp family code	Number of gear units
910925866222	BGP762 LED129-/740 I DM11 DGR 32-48	-	LED129	Unit
910925866223	BGP762 LED169-/740 I DS50 DGR 62	-	LED169	Unit
910925866224	BGP762 LED110-/740 I DN10 DGR 32-48	-	LED110	Unit
910925866226	BGP762 LED180-/740 I DX10 DGR 32-48	-	LED180	Unit
910925866245	BGP762 LED200-/740 I DW50 DGR 62	-	LED200	Unit
910925863554	BGP760 LED10-/740 I DM10 DGR 32-48	EB	LED10	Unit
910925863556	BGP760 LED14-/740 I DN10 DGR 32-48	EB	LED14	Unit
910925863566	BGP760 LED44-/740 I DW50 DGR 32-48	EB	LED44	Unit
910925866249	BGP763 LED300-/740 I DW50 DGR 62	-	LED300	2 units
910925866250	BGP763 LED260-/740 I DX10 DGR 32-48	-	LED260	2 units
910925866230	BGP761 LED45-/740 I DM10 DGR 32-48	-	LED45	Unit
910925866231	BGP761 LED74-/740 I DM50 DGR 32-48	-	LED74	Unit
910925866232	BGP761 LED94-/740 I DX10 DGR 32-48	-	LED94	Unit
910925866234	BGP761 LED55-/740 I DN10 DGR 32-48	-	LED55	Unit
910925866235	BGP761 LED84-/740 I DS50 DGR 32-48	-	LED84	Unit

Light Technical

Order Code	Full Product Name	Luminaire light beam spread	Luminous Flux	Number of light sources	Optic type outdoor
910925866222	BGP762 LED129-/740 I DM11 DGR 32-48	160° - 42° x 54°	11,830 lm	-	Distribution medium 11
910925866223	BGP762 LED169-/740 I DS50 DGR 62	32° x 29°	14,960 lm	-	Distribution symmetrical 50
910925866224	BGP762 LED110-/740 I DN10 DGR 32-48	68° x 158°	10,010 lm	-	Distribution narrow 10
910925866226	BGP762 LED180-/740 I	150° - 43° x 67°	15,480 lm	-	Distribution extra-wide 10

Order Code	Full Product Name	Luminaire light beam spread	Luminous Flux	Number of light sources	Optic type outdoor
910925866222	BGP762 LED129-/740 I DM11 DGR 32-48	160° - 42° x 54°	11,830 lm	-	Distribution medium 11
910925866245	BGP762 LED200-/740 I DW50 DGR 62	152° - 24° x 66°	17,200 lm	-	Distribution wide 50
910925863554	BGP760 LED10-/740 I DM10 DGR 32-48	157° - 33° x 55°	900 lm	1	Distribution medium 10
910925863556	BGP760 LED14-/740 I DN10 DGR 32-48	68° x 157°	1,274 lm	1	Distribution narrow 10

Order Code	Full Product Name	Luminaire		Number of light sources	Optic type outdoor
		light beam spread	Luminous Flux		
910925863566	BGP760	152° - 24° x	3,784 lm	1	Distribution wide 50
	LED44-/740 I	66°			
	DW50 DGR				
	32-48				
910925866249	BGP763	152° - 24° x	25,200 lm	-	Distribution wide 50
	LED300-/740 I	66°			
	DW50 DGR 62				
910925866250	BGP763	150° - 43° x	22,100 lm	-	Distribution extra-wide 10
	LED260-/740 I	67°			
	DX10 DGR				
	32-48				
910925866230	BGP761	157° - 33° x	4,050 lm	-	Distribution medium 10
	LED45-/740 I	55°			
	DM10 DGR				
	32-48				
910925866231	BGP761	154° - 31° x	6,660 lm	-	Distribution medium 50
	LED74-/740 I	54°			
	DM50 DGR				
	32-48				

Order Code	Full Product Name	Luminaire		Number of light sources	Optic type outdoor
		light beam spread	Luminous Flux		
910925866232	BGP761	150° - 43° x	8,084 lm	-	Distribution extra-wide 10
	LED94-/740 I	67°			
	DX10 DGR				
	32-48				
910925866234	BGP761	68° x 157°	5,096 lm	-	Distribution narrow 10
	LED55-/740 I				
	DN10 DGR				
	32-48				
910925866235	BGP761	32° x 29°	7,392 lm	-	Distribution symmetrical 50
	LED84-/740 I				
	DS50 DGR				
	32-48				

Operating and Electrical

Order Code	Full Product Name	Power Consumption
910925866222	BGP762 LED129-/740 I DM11 DGR 32-48	72 W
910925866223	BGP762 LED169-/740 I DS50 DGR 62	98 W
910925866224	BGP762 LED110-/740 I DN10 DGR 32-48	61 W
910925866226	BGP762 LED180-/740 I DX10 DGR 32-48	100 W
910925866245	BGP762 LED200-/740 I DW50 DGR 62	114 W
910925863554	BGP760 LED10-/740 I DM10 DGR 32-48	6.8 W
910925863556	BGP760 LED14-/740 I DN10 DGR 32-48	9 W
910925863566	BGP760 LED44-/740 I DW50 DGR 32-48	26 W

Order Code	Full Product Name	Power Consumption
910925866249	BGP763 LED300-/740 I DW50 DGR 62	176 W
910925866250	BGP763 LED260-/740 I DX10 DGR 32-48	150 W
910925866230	BGP761 LED45-/740 I DM10 DGR 32-48	27 W
910925866231	BGP761 LED74-/740 I DM50 DGR 32-48	43.5 W
910925866232	BGP761 LED94-/740 I DX10 DGR 32-48	54 W
910925866234	BGP761 LED55-/740 I DN10 DGR 32-48	31.5 W
910925866235	BGP761 LED84-/740 I DS50 DGR 32-48	49.5 W

Approval and Application

Order Code	Full Product Name	Glow-wire test
910925866222	BGP762 LED129-/740 I DM11 DGR 32-48	-
910925866223	BGP762 LED169-/740 I DS50 DGR 62	-
910925866224	BGP762 LED110-/740 I DN10 DGR 32-48	-
910925866226	BGP762 LED180-/740 I DX10 DGR 32-48	-
910925866245	BGP762 LED200-/740 I DW50 DGR 62	-
910925863554	BGP760 LED10-/740 I DM10 DGR 32-48	Temperature 650 °C, duration 5 s
910925863556	BGP760 LED14-/740 I DN10 DGR 32-48	Temperature 650 °C, duration 5 s

Order Code	Full Product Name	Glow-wire test
910925863566	BGP760 LED44-/740 I DW50 DGR 32-48	Temperature 650 °C, duration 5 s
910925866249	BGP763 LED300-/740 I DW50 DGR 62	-
910925866250	BGP763 LED260-/740 I DX10 DGR 32-48	-
910925866230	BGP761 LED45-/740 I DM10 DGR 32-48	-
910925866231	BGP761 LED74-/740 I DM50 DGR 32-48	-
910925866232	BGP761 LED94-/740 I DX10 DGR 32-48	-
910925866234	BGP761 LED55-/740 I DN10 DGR 32-48	-
910925866235	BGP761 LED84-/740 I DS50 DGR 32-48	-

Product Data

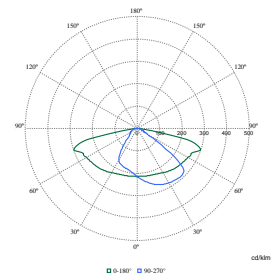
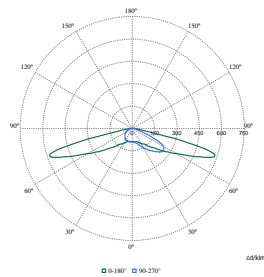
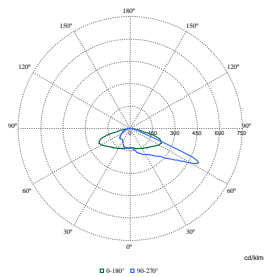
Order Code	Full Product Name	Product family code
910925866222	BGP762 LED129-/740 I DM11 DGR 32-48	BGP762

Order Code	Full Product Name	Product family code
910925866223	BGP762 LED169-/740 I DS50 DGR 62	BGP762

Order Code	Full Product Name	Product family code
910925866224	BGP762 LED110-/740 I DN10 DGR 32-48	BGP762
910925866226	BGP762 LED180-/740 I DX10 DGR 32-48	BGP762
910925866245	BGP762 LED200-/740 I DW50 DGR 62	BGP762
910925863554	BGP760 LED10-/740 I DM10 DGR 32-48	BGP760
910925863556	BGP760 LED14-/740 I DN10 DGR 32-48	BGP760
910925863566	BGP760 LED44-/740 I DW50 DGR 32-48	BGP760
910925866249	BGP763 LED300-/740 I DW50 DGR 62	BGP763

Order Code	Full Product Name	Product family code
910925866250	BGP763 LED260-/740 I DX10 DGR 32-48	BGP763
910925866230	BGP761 LED45-/740 I DM10 DGR 32-48	BGP761
910925866231	BGP761 LED74-/740 I DM50 DGR 32-48	BGP761
910925866232	BGP761 LED94-/740 I DX10 DGR 32-48	BGP761
910925866234	BGP761 LED55-/740 I DN10 DGR 32-48	BGP761
910925866235	BGP761 LED84-/740 I DS50 DGR 32-48	BGP761

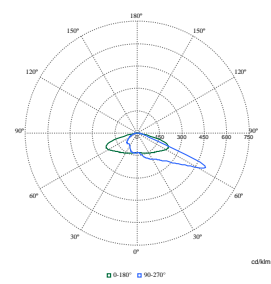
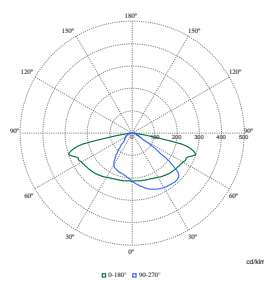
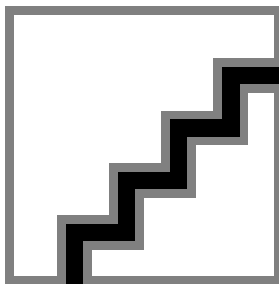
Polar Wide Diagrams



Polar Normal (separate) - BGP761I - 910925866232

Polar Normal (separate) - BGP763I - 910925866249

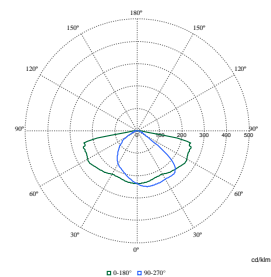
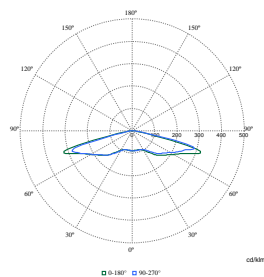
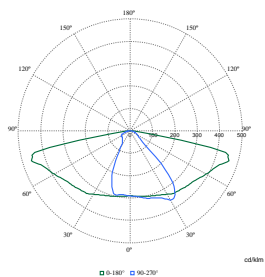
Polar Normal (separate) - BGP760I - 910925863554



Polar Normal (separate) - BGP760I - 910925863566

Polar Normal (separate) - BGP761I - 910925866230

Polar Normal (separate) - BGP763I - 910925866250

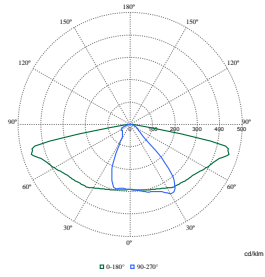


Polar Normal (separate) - BGP762I - 910925866224

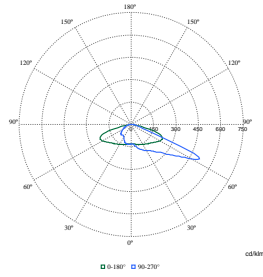
Polar Normal (separate) - BGP761I - 910925866235

Polar Normal (separate) - BGP762I - 910925866222

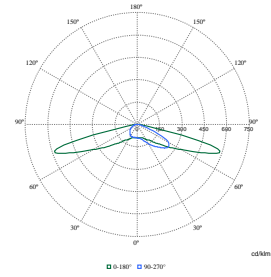
Polar Wide Diagrams



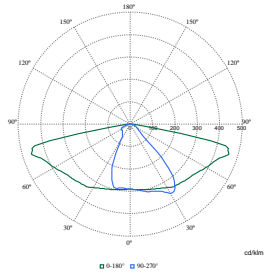
Polar Normal (separate) - BGP7611 - 910925866234



Polar Normal (separate) - BGP7621 - 910925866226



Polar Normal (separate) - BGP7621 - 910925866245



Polar Normal (separate) - BGP7601 - 910925863556

