



TunLite LED Gen2: a cost-effective solution for tunnel and underpass lighting

TunLite LED GEN2

The lighting system must be TunLite LED Gen2 or, alternatively, it must be equal to the following criteria:. The product family range should offer a wide range of lumen outputs, by means of minimum 3 dedicated housing sizes. Serviceability of the luminaire should be such that drivers and LEDs are serviceable from below when mounted in the tunnel. Luminaires should have options for wall and cable tray mounting. Electrical safety class I. A choice of symmetrical and asymmetrical, narrow, wide and extra wide optics and counter-beam optics must be available, color temperature 4,000K. Minimal lamp efficacy of 160 lm/W. The luminaires must be ingress protected to IP66 and impact protected to IK08. The lifetime should be at least 100,000 hours @L95. The luminaires must have a QR-based identification system that makes each luminaire uniquely identifiable, thereby enabling installation, maintenance, and spare part information to be easily and accurately referenced. The luminaires must have control options for DALI 2.0 to allow optimal integration in tunnel control and monitoring systems. The lighting system must feature ENEC-certified LED-based luminaires. The luminaire has a warranty period of 5 years.

Benefits

- Low initial investment for a standard tunnel lighting system
- Reliable quality for a long lifetime
- Complete size range covers all tunnel lighting applications

TunLite LED GEN2

Features

- High lumen/watt ratio thanks to LEDGINE-O platform
- Optic and lumen range suits most tunnel geometries
- Plug and play installation – simple flying lead fitted with connector

Application

- Tunnel
- Underpass

Versions



BGP285_TunLite LED Gen2_Medium

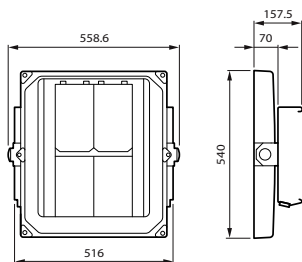
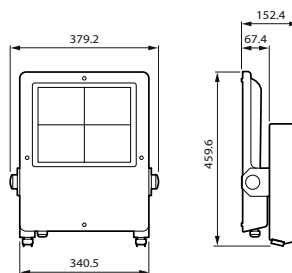
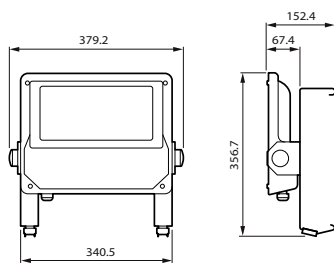


BGP287_TunLite LED Gen2_Xlarge



BGP286_TunLite LED Gen2_Large

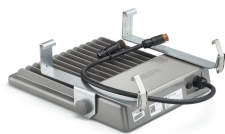
Dimensional drawing



TunLite LED GEN2

Product details

BGP286_TunLite LED Gen2_Large



BGP285_TunLite LED
Gen2_Medium



BGP287_TunLite LED Gen2_Xlarge



TunLite LED GEN2

General Information	
Driver included	Yes
Service tag	Yes
Light Technical	
Luminaire light beam spread	88° x 157°
Light source color	740 neutral white
Correlated Color Temperature (Nom)	4000 K
Color rendering index (CRI)	70
Optic type outdoor	Distribution medium 12
Upward light output ratio	0
Operating and Electrical	
Surge Protection (Common/ Differential)	Surge protection level until 10 kV differential mode and 10 kV common mode
Controls and Dimming	
Dimmable	Yes
Maximum dim level	10%
Mechanical and Housing	
Optical cover type	Flat glass
Housing Color	Aluminum
Ingress protection code	IP66
Standard tilt angle side entry	0°
Standard tilt angle posttop	0°
Approval and Application	
CE mark	Yes

General Information

Order Code	Full Product Name	Lamp family code	Light source replaceable	Number of gear units
912300058451	BGP285 LED140/740 DM12 ALU D9 SRG C1KC5	LED140	No	1 unit
912300058453	BGP287 LED380/740 DM12 ALU D9 SRG C1KC5	LED380	Yes	2 units
912300058454	BGP287 LED520/740 DM12 ALU D9 SRG C1KC5	LED520	Yes	2 units
912300058452	BGP286 LED280/740 DM12 ALU D9 SRG C1KC5	LED280	No	2 units

Light Technical

Order Code	Full Product Name	Luminous Flux
912300058451	BGP285 LED140/740 DM12 ALU D9 SRG C1KC5	11,620 lm
912300058453	BGP287 LED380/740 DM12 ALU D9 SRG C1KC5	33,060 lm

Order Code	Full Product Name	Luminous Flux
912300058454	BGP287 LED520/740 DM12 ALU D9 SRG C1KC5	44,200 lm
912300058452	BGP286 LED280/740 DM12 ALU D9 SRG C1KC5	23,240 lm

Operating and Electrical

Order Code	Full Product Name	Power Consumption
912300058451	BGP285 LED140/740 DM12 ALU D9 SRG C1KC5	86 W
912300058453	BGP287 LED380/740 DM12 ALU D9 SRG C1KC5	230 W

Order Code	Full Product Name	Power Consumption
912300058454	BGP287 LED520/740 DM12 ALU D9 SRG C1KC5	315 W
912300058452	BGP286 LED280/740 DM12 ALU D9 SRG C1KC5	172 W

Mechanical and Housing

Order Code	Full Product Name	Mech. impact protection code
912300058451	BGP285 LED140/740 DM12 ALU D9 SRG C1KC5	IK08
912300058453	BGP287 LED380/740 DM12 ALU D9 SRG C1KC5	IK09

Order Code	Full Product Name	Mech. impact protection code
912300058454	BGP287 LED520/740 DM12 ALU D9 SRG C1KC5	IK09
912300058452	BGP286 LED280/740 DM12 ALU D9 SRG C1KC5	IK08

TunLite LED GEN2

Approval and Application

Order Code	Full Product Name	Flammability mark
912300058451	BGP285 LED140/740 DM12 ALU D9 SRG C1KC5	For mounting on normally flammable surfaces
912300058453	BGP287 LED380/740 DM12 ALU D9 SRG C1KC5	For mounting on easily flammable surfaces

Order Code	Full Product Name	Flammability mark
912300058454	BGP287 LED520/740 DM12 ALU D9 SRG C1KC5	For mounting on easily flammable surfaces
912300058452	BGP286 LED280/740 DM12 ALU D9 SRG C1KC5	For mounting on normally flammable surfaces

Product Data

Order Code	Full Product Name	Product family code
912300058451	BGP285 LED140/740 DM12 ALU D9 SRG C1KC5	BGP285
912300058453	BGP287 LED380/740 DM12 ALU D9 SRG C1KC5	BGP287

Order Code	Full Product Name	Product family code
912300058454	BGP287 LED520/740 DM12 ALU D9 SRG C1KC5	BGP287
912300058452	BGP286 LED280/740 DM12 ALU D9 SRG C1KC5	BGP286

