



TubePoint Gen3: compact, high performance and long-lasting tunnel lighting

Many tunnel authorities face the challenge of outdated lighting systems that urgently need replacement, often within tight budget constraints. TubePoint, now in its third generation, offers the ideal solution. Built on years of expertise in tunnel and underpass lighting and enhanced with the latest technologies, TubePoint Gen3 delivers exceptional performance at a cost-effective price. Its modular design and advanced LED architecture make TubePoint Gen3 more versatile and efficient than ever, meeting the most demanding tunnel lighting standards. Crafted from premium components specifically engineered for tunnel environments, these luminaires ensure long life, outstanding reliability, and minimal maintenance costs. Enhanced performance and a wide range of light distributions allow for fewer luminaires per installation, reducing both material and energy costs. With a high lumen-per-watt ratio at system level, TubePoint Gen3 significantly lowers energy consumption and optimizes total cost of ownership. Fully integrated into our TotalTunnel solution, TubePoint Gen3 serves as a cornerstone for complete tunnel lighting systems. It's a trusted, high-quality choice for safe, efficient, and adaptable lighting in traffic tunnels.

Benefits

- Highly versatile luminaire range designed for all types of traffic tunnels
- Compact design for easy handling and quick installation
- Reduced installation time thanks to fewer luminaires required per project
- Outstanding value for money with a high-quality, long-lasting lighting solution
- Sustainable choice with lower energy consumption and reduced environmental footprint

Applications

- Tunnel
- Underpass

Versions



TubePoint Gen3 MEDIUM



TubePoint Gen3 XLARGE



TubePoint Gen3 LARGE

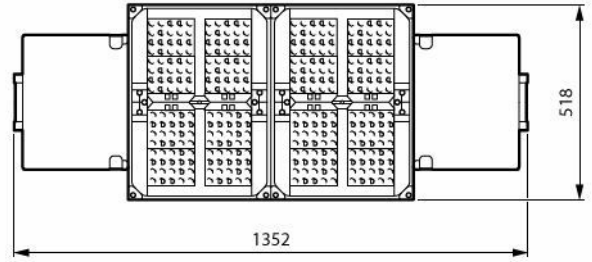
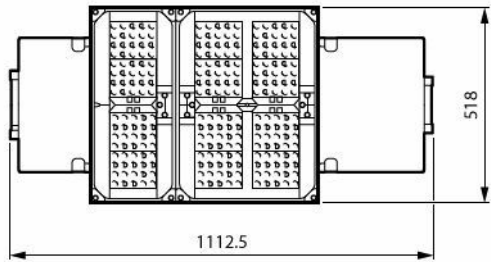


TubePoint Gen3 SMALL

Features

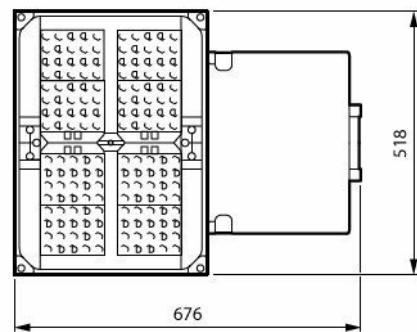
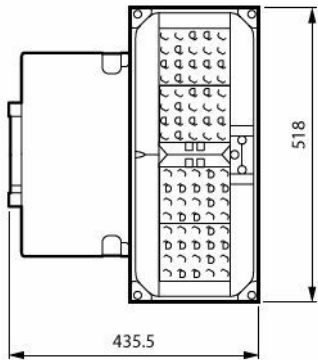
- Compact and lightweight
- Wide range of optics and high lumen packages
- High corrosion resistance
- Various mounting and connectivity options
- Remote driver options
- Compatible with Signify and third-party tunnel controls
- QR-based identification for maintenance, installation and spare part information

Dimensional drawing



BGP247 LED900-1P/740 PSD DM11P DGR C5M-H

BGP248 LED1200-1P/740 PSD DM11P DGR C5M



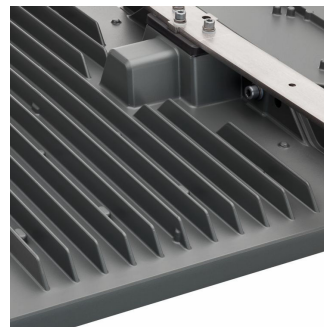
BGP245 LED100-1P/740 PSD DM11P DGR C5M-H

BGP246 LED600-1P/740 PSD DM11P DGR C5M-H

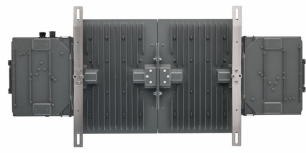
Product details



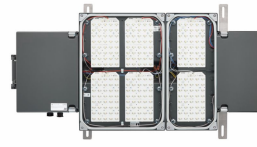
Connection and cover details



Detail cooling ribs



Top view



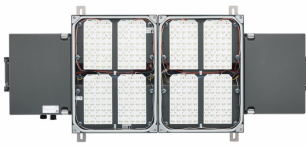
Bottom view



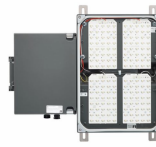
Top view



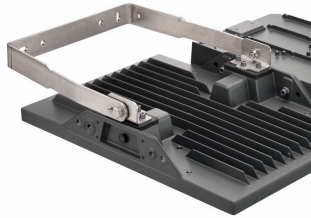
Connection and cover details



Bottom view



Bottom view



MBA bracket



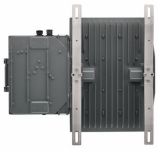
Gearcover opened



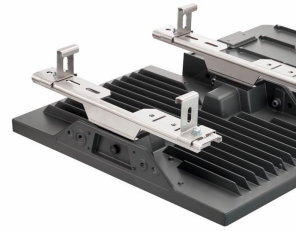
Gearcover opened



MBC bracket



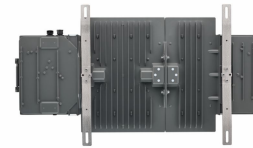
Top view



MBQ bracket



BA bracket



Top view



Bottom view



Glas holder

General Information

Driver included Yes

Light Technical

Upward light output ratio	0
Correlated Color Temperature (Nom)	4000 K
Color rendering index (CRI)	70
Light source color	740 neutral white
Luminaire light beam spread	60° - 21° x 153°

Operating and Electrical

Surge Protection (Common/Differential)	Surge protection level until 6 kV differential mode and 8 kV common mode
--	--

Controls and Dimming

Dimmable Yes

Mechanical and Housing

Housing Color Gray

Ingress protection code IP66 [Dust penetration-protected, jet-proof]

Mech. impact protection code IK10 [20 J vandal-resistant]

Standard tilt angle posttop -

Standard tilt angle side entry -

Optical cover type Glass

Approval and Application

Flammability mark -

CE mark Yes

General Information

Order Code	Full Product Name	Lamp family code	Number of gear units
912300060791	BGP246 LED600-1P/740 PSD DM11P DGR C5M-H	LED600	2 units
912300060793	BGP248 LED1200-1P/740 PSD DM11P DGR C5M	LED1200	4 units
912300060792	BGP247 LED900-1P/740 PSD DM11P DGR C5M-H	LED900	3 units
912300060789	BGP245 LED100-1P/740 PSD DM11P DGR C5M-H	LED100	1 unit
912300060790	BGP245 LED300-1P/740 PSD DM11P DGR C5M-H	LED300	1 unit

Light Technical

Order Code	Full Product Name	Luminous Flux	Number of light sources	Optic type outdoor
912300060791	BGP246 LED600-1P/740 PSD DM11P DGR C5M-H	51,982 lm	160	Distribution medium 11 Distribution medium version 11 Performance (for 5050)
912300060793	BGP248 LED1200-1P/740 PSD DM11P DGR C5M	102,882 lm	320	Distribution medium 11 Distribution medium version 11 Performance (for 5050)
912300060792	BGP247 LED900-1P/740 PSD DM11P DGR C5M-H	78,054 lm	240	Distribution medium 11 Distribution medium version 11 Performance (for 5050)
912300060789	BGP245 LED100-1P/740 PSD DM11P DGR C5M-H	8,943 lm	40	Distribution medium 11 Distribution medium version 11 Performance (for 5050)
912300060790	BGP245 LED300-1P/740 PSD DM11P DGR C5M-H	26,180 lm	80	Distribution medium 11 Distribution medium version 11 Performance (for 5050)

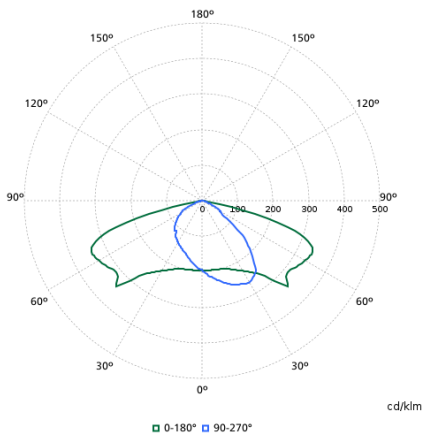
Operating and Electrical

Order Code	Full Product Name	Power Consumption
912300060791	BGP246 LED600-1P/740 PSD DM11P DGR C5M-H	302.3 W
912300060793	BGP248 LED1200-1P/740 PSD DM11P DGR C5M	603 W
912300060792	BGP247 LED900-1P/740 PSD DM11P DGR C5M-H	453.6 W
912300060789	BGP245 LED100-1P/740 PSD DM11P DGR C5M-H	50.5 W
912300060790	BGP245 LED300-1P/740 PSD DM11P DGR C5M-H	151.4 W

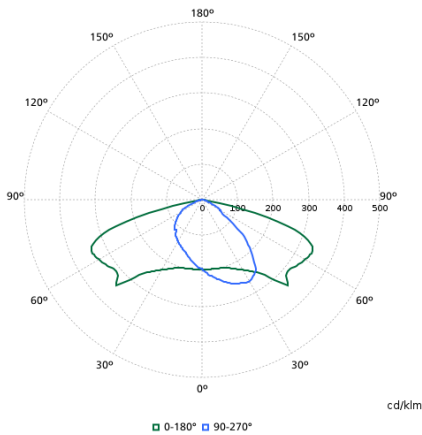
Product Data

Order Code	Full Product Name	Product family code
912300060791	BGP246 LED600-1P/740 PSD DM11P DGR C5M-H	BGP246
912300060793	BGP248 LED1200-1P/740 PSD DM11P DGR C5M	BGP248
912300060792	BGP247 LED900-1P/740 PSD DM11P DGR C5M-H	BGP247
912300060789	BGP245 LED100-1P/740 PSD DM11P DGR C5M-H	BGP245
912300060790	BGP245 LED300-1P/740 PSD DM11P DGR C5M-H	BGP245

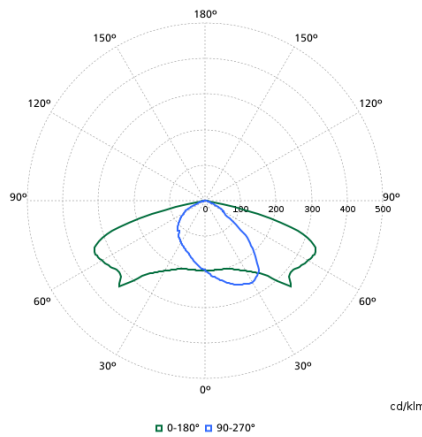
Polar normal diagrams



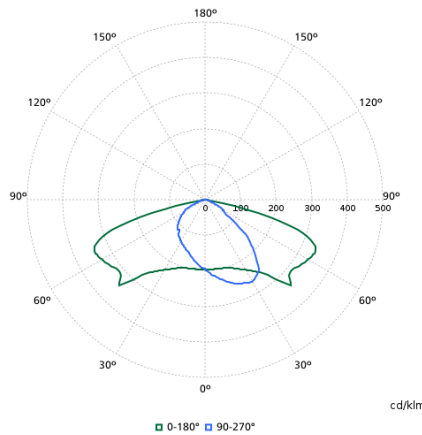
912300060789



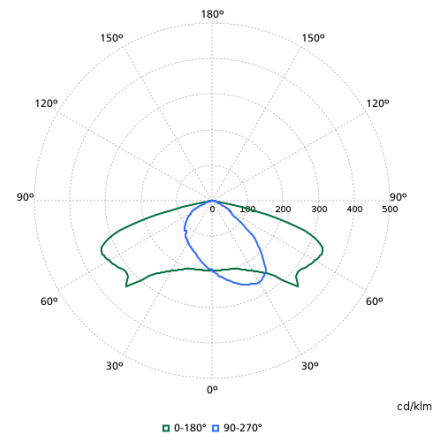
912300060792



912300060790



912300060791



912300060791

