



FlowStar Gen2: keep traffic moving safely in critical tunnel lighting conditions

FlowStar Gen2

For the most demanding conditions, where corrosion is a real threat, tunnel owners want tunnel luminaires that deliver cost, safety and availability benefits over their entire lifetime. With a high-grade, corrosion-resistant, full stainless steel build and dedicated LED design, FlowStar Gen2 delivers all that – and more. FlowStar Gen2 is part of the TotalTunnel solution. Combined with lighting controls, cables and our lifecycle services, these tunnel luminaires offer the highest levels of performance with exactly the right balance of visibility, safety and economy. And thanks to a high lumen output, they can also reduce the number of project luminaires required without compromising safety. A long-lasting and highly-efficient solution for tunnel lighting or underpass lighting that will keep traffic safe and moving.

Benefits

- Reliable and long-lasting for traffic tunnels in highly corrosive environments
- Undisputed corrosion resistance, full stainless steel build
- Highly efficient to reduce energy consumption
- High lumen output to reduce the number of project luminaires
- Easy to clean, with a self-drainable top

FlowStar Gen2

Features

- High-grade stainless-steel housing with no external aluminium parts
- Flat top, no ribs or fins
- Wide choice of high-quality optics
- Flexible mounting with quick release for easy maintenance
- Compatible with tunnel controls from and third parties
- Service tag: QR-based identification for maintenance, installation and spare part information

Application

- Tunnel
- Underpass

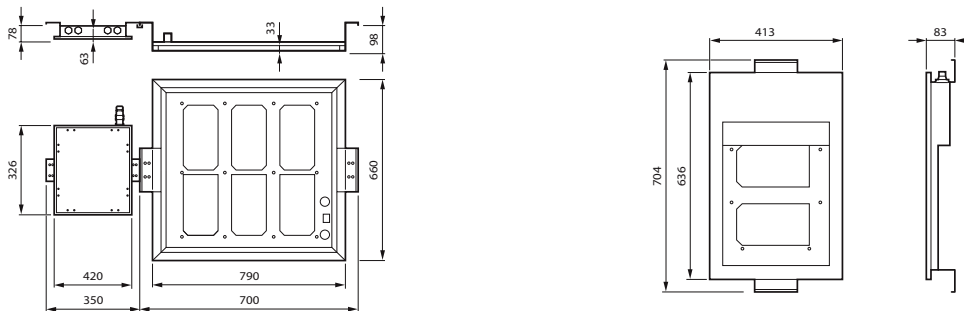
Versions



BGB308 FlowStar Gen2 Large

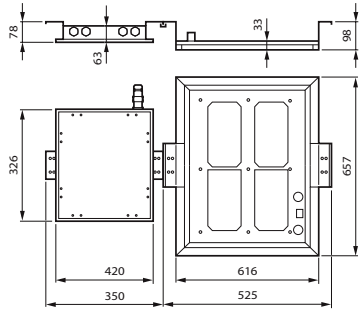
BGB307 FlowStar Gen2 Medium

Dimensional drawing



FlowStar Gen2

Dimensional drawing

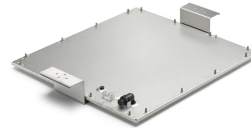


Product details

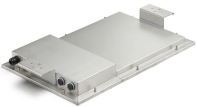
BGB307_FlowStar Gen2 LED unit
Medium_interfaces



BGB308_FlowStar Gen2 LED unit
Large_interfaces



BGB306_FlowStar Gen2
Small_Backside



BGB305_FlowStar Gen2
Mini_Backside details



General Information

Driver included	Yes
Light source replaceable	Yes
Service Tag	Yes

Light Technical

Light source colour	740 neutral white
Correlated Colour Temperature (Nom)	4000 K
Colour rendering index (CRI)	70
Upwards light output ratio	0

Operating and Electrical

Surge Protection (Common/Differential)	Standard surge protection level
--	---------------------------------

Controls and Dimming

Dimmable	Yes
Maximum dim level	10%

Mechanical and Housing

Optical cover type	Glass flat with frame
Housing Colour	Steel
Mech. impact protection code	IK09
Ingress protection code	IP66
Standard tilt angle side entry	0°
Standard tilt angle post-top	-

Approval and Application

CE mark	Yes
Flammability mark	For mounting on normally flammable surfaces

General Information

Order Code	Full Product Name	Lamp family code	Number of gear units
912300060015	BGB308 LED720/740 DTX1-HT D9 STD MICIO F	LED720	3 units
912300060127	BGB307 LED500/740 DSM11 D9 STD MICIO FU	LED500	Unit
912300060014	BGB306 LED230/740 DSM11 D9 MICIO FU BA	LED230	Unit
912300060126	BGB306 LED230/740 DSM11 D9 STD MICIO FU	LED230	Unit

Light Technical

Order Code	Full Product Name	Luminaire		
		light beam spread	Luminous Flux	Optic type outdoor
912300060015	BGB308 LED720/740 DTX1-HT D9 STD MICIO F	152° x 155°	57,600 lm	Asymmetrical
912300060127	BGB307 LED500/740 DSM11 D9 STD MICIO FU	101° x 158°	40,500 lm	Distribution symmetrical medium 11

Order Code	Full Product Name	Luminaire		
		light beam spread	Luminous Flux	Optic type outdoor
912300060014	BGB306 LED230/740 DSM11 D9 MICIO FU BA	101° x 158°	20,010 lm	Distribution symmetrical medium 11
912300060126	BGB306 LED230/740 DSM11 D9 STD MICIO FU	101° x 158°	18,860 lm	Distribution symmetrical medium 11

Operating and Electrical

Order Code	Full Product Name	Power Consumption
912300060015	BGB308 LED720/740 DTX1-HT D9 STD MICIO F	425 W
912300060127	BGB307 LED500/740 DSM11 D9 STD MICIO FU	300 W

Order Code	Full Product Name	Power Consumption
912300060014	BGB306 LED230/740 DSM11 D9 MICIO FU BA	136 W
912300060126	BGB306 LED230/740 DSM11 D9 STD MICIO FU	136 W

FlowStar Gen2

Product Data

Order Code	Full Product Name	Product family code	Order Code	Full Product Name	Product family code
912300060015	BGB308 LED720/740 DTX1-HT D9 STD MICIO F	BGB308	912300060014	BGB306 LED230/740 DSM11 D9 MICIO FU BA	BGB306
912300060127	BGB307 LED500/740 DSM11 D9 STD MICIO FU	BGB307	912300060126	BGB306 LED230/740 DSM11 D9 STD MICIO FU	BGB306

