



Metronomis LED: a play of light and shadow

Metronomis LED is the first post-top luminaire range in the world to offer a palette of lighting effects to give projects a unique contextual or aesthetic touch. An innovative play of reflection, light and shadow that casts a pattern on the ground, or in the bowl, to create additional ambience. Four iconic designs are available: Metronomis LED Torch (BDS650), Metronomis LED Torch with hat (BDS651), Metronomis LED Sharp (BDS660), and Metronomis LED Fluid (BDS670). Each luminaire design has a visual and modular link to Metronomis I, reduced to its essential elements. During the day, the discreet, transparent design blends into its urban context, whether that be contemporary or classical architecture and surroundings, while its night-time appearance is both functional and decorative. Flexible and modular, the Metronomis LED family comes with a range of columns and a wide variety of effects. This enables architects and lighting designers to create a unified, consistent lighting design across any cityscape, while still reflecting the differences in urban culture and history.

Metronomis LED also offers all the benefits of LEDGINE. Energy saving, serviceable and upgradable, this luminaire range is designed to maintain excellent light quality over its lifetime.

Benefits

- Create a unique city identity with a pure design and palette of lighting effects
- Complete and innovative solution with a shared design identity for mast and luminaires
- Exceptional visual comfort with multiple geometries to optimize safety
- Future-ready with a Zhaga-D4i system ready (SR) top socket to connect with Interact controls
- Service tag for easy installation and maintenance

Applications

- City centers and squares
- Commercial and business centers
- Residential and architectural areas
- Cycle paths, footpaths

Versions



OP-PR BDS650i 0017

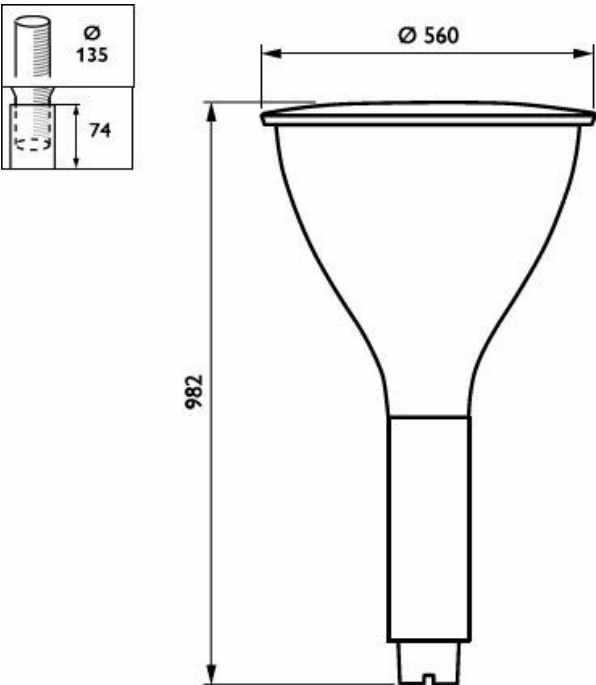


Metronomis LED Fluid featuring a signature washlight effect to create ambiance

Features

- Large choice of light effects (on ground, inside/outside bowl)
- 2D engraving option to personalize luminaires further
- Choice of color temperatures and color rendering for different ambiances: 2200K, 2700K, 3000K and 4000K
- Efficacy up to 157 lm/W
- Torch version with ULR <1%
- Lifetime up to 100,000 hours @L96 B10
- Five dedicated aluminum and wooden masts (3.5 and 4 meters)
- 5-year standard warranty (option to extend up to 10 years)

Dimensional drawing



Metronomis LED Cone Fluid dimensional drawing

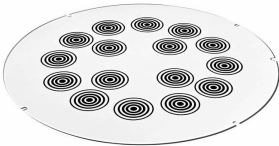
Product details



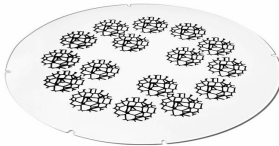
OPDP_BDS650i_0009-
Detail photo



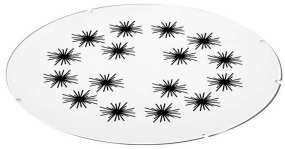
OPDP_BDS650i_0011-
Detail photo



OPDP_BDS650i_0045-
Detail photo



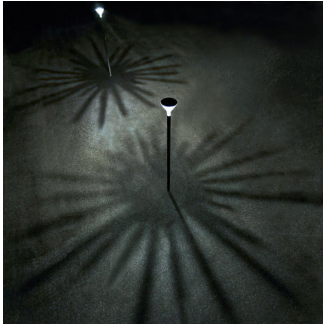
OPDP_BDS650i_0047-
Detail photo



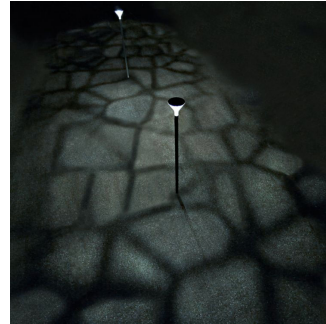
OPDP_BDS650i_0049-
Detail photo



OPDP_BDS650i_0051-
Detail photo



OPDP_BDS650i_0053-
Detail photo



OPDP_BDS650i_0055-
Detail photo

General Information

Lamp family code	LED80 [LED module 8000 lm]
Light source replaceable	Yes
Number of gear units	1 unit
Driver included	Yes
Service tag	Yes

Light Technical

Upward light output ratio	4.92
Color rendering index (CRI)	70
Luminaire light beam spread	48° x 66°
Optic type outdoor	Metronomis distribution medium

Operating and Electrical

Surge Protection (Common/Differential)	Surge protection level until 10 kV
--	------------------------------------

Controls and Dimming

Dimmable	Yes
Maximum dim level	Programmable

Mechanical and Housing

Housing Color	Gray
Ingress protection code	IP66 [Dust penetration-protected, jet-proof]
Mech. impact protection code	IK10 [20 J vandal-resistant]
Standard tilt angle posttop	-
Standard tilt angle side entry	-
Optical cover type	Polycarbonate bowl/cover

Approval and Application

Flammability mark	-
CE mark	Yes

Product Data

Product family code	BDS670 [METRONOMIS LED CONE FLUID]
---------------------	------------------------------------

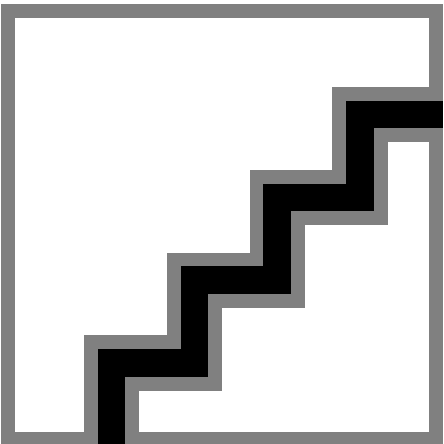
Light Technical

Order Code	Full Product Name	Light source color	Luminous Flux	Correlated Color Temperature (Nom)
19982800	BDS670 LED80-4S/740 I MDM D9 STD 60	740 neutral white	6,800 lm	4000 K
19993400	BDS670 LED80/722 I MDM SRT 60	722 warm white	6,720 lm	2200 K

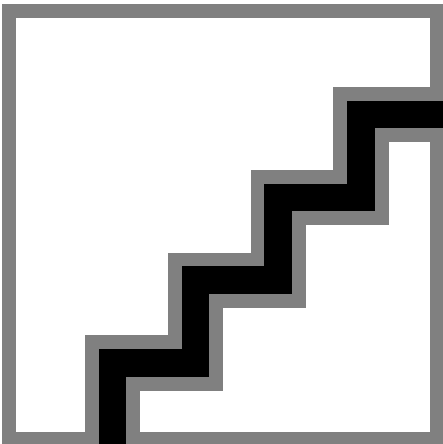
Operating and Electrical

Order Code	Full Product Name	Power Consumption
19982800	BDS670 LED80-4S/740 I MDM D9 STD 60	46.5 W
19993400	BDS670 LED80/722 I MDM SRT 60	64 W

Polar normal diagrams



BDS650I - 910925868187



BDS650I - 910925868198