

Direct View Linear Luminaires for Creative Architectural and Media Façade Applications

UniBar

UniBar is a surface mounted, exterior-rated and slim sized linear LED direct view luminaire that is designed for façade and outdoor architectural lighting applications. The robust mechanical and unique optical design make it ideal for buildings facades, media facades, bridges, overpasses and any application that requires a slim linear direct view lighting solution. Direct view spread lens, through wiring for end-to-end connection and DMX control option available with up to 10 pixels (10IDs) to give architects and designers the freedom to explore a wide range of concepts and design with no limitations. Available in white, monochromatic colors, RGB, RGBW and tunable white.

Benefits

- Low power LEDs deliver a smooth and soft lighting distribution
- Up to 10 pixels (10IDs) for easy and flexible control
- Wide beam angle for direct view application
- Robust Design & IP66 rating for outdoor use
- Two types of mounting brackets to fit different applications

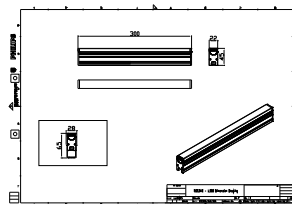
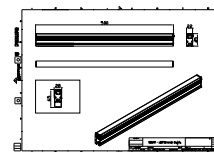
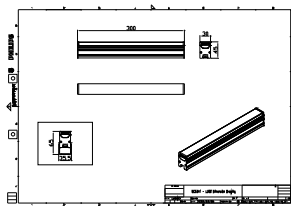
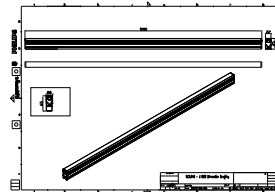
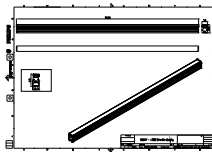
Features

- Standard: RGBW, RGB, 2700K, 3000K and 4000K
- Optional 5000K, Monochromatic Colors and Tunable White
- Standard 300, 500 and 1000mm product lengths
- Available in DMX control option

Application

- Bridges, Monuments, Facades
- Parks and Plazas
- Landscape

Dimensional drawing



Product details

BCS342 Detail Photo



BCS342 Detail Photo



BCS342 Detail Photo



BCS342 Detail Photo



BCS342 Detail Photo



BCS342 Detail Photo



General Information	
Driver included	No
Light Technical	
Color rendering index (CRI)	80
Controls and Dimming	
Dimmable	No
Mechanical and Housing	
Optical cover type	Opal
Housing Color	Silver
Mech. impact protection code	IK08
Ingress protection code	IP66
Approval and Application	
CE mark	Yes

Light Technical

Order Code	Full Product Name	Light source color	Correlated Color	
			Temperature (Nom)	Luminous Flux
911401778862	BCS340 48LED 30K 24V OC L100	Warm white	3000 K	565 lm
911401778882	BCS340 48LED 40K 24V OC L100	Neutral white	4000 K	600 lm
911401778952	BCS340 24LED 30K 24V OC L50	Warm white	3000 K	290 lm
911401778972	BCS340 24LED 40K 24V OC L50	Neutral white	4000 K	305 lm
911401779022	BCS340 12LED 27K 24V OC L30	Warm white	2700 K	145 lm
911401779042	BCS340 12LED 30K 24V OC L30	Warm white	3000 K	145 lm
911401779062	BCS340 12LED 40K 24V OC L30	Neutral white	4000 K	155 lm
911401779132	BCS341 60LED 30K 24V OC L100	Warm white	3000 K	725 lm
911401779152	BCS341 60LED 40K 24V OC L100	Neutral white	4000 K	770 lm
911401779312	BCS341 18LED 30K 24V OC L30	Warm white	3000 K	205 lm
911401779332	BCS341 18LED 40K 24V OC L30	Neutral white	4000 K	215 lm
911401703953	BCS342 120LED 30K 24V OC L100	Warm white	3000 K	1,535 lm
911401703983	BCS342 120LED 40K 24V OC L100	Neutral white	4000 K	1,630 lm
911401704253	BCS342 36LED 30K 24V OC L30	Warm white	-	480 lm
911401704283	BCS342 36LED 40K 24V OC L30	Neutral white	-	510 lm

Operating and Electrical

Order Code	Full Product Name	Power Consumption
911401778862	BCS340 48LED 30K 24V OC L100	12 W
911401778882	BCS340 48LED 40K 24V OC L100	12 W
911401778952	BCS340 24LED 30K 24V OC L50	6 W

Order Code	Full Product Name	Power Consumption
911401778972	BCS340 24LED 40K 24V OC L50	6 W
911401779022	BCS340 12LED 27K 24V OC L30	3 W
911401779042	BCS340 12LED 30K 24V OC L30	3 W

Order Code	Full Product Name	Power Consumption
911401779062	BCS340 12LED 40K 24V OC L30	3 W
911401779132	BCS341 60LED 30K 24V OC L100	15 W
911401779152	BCS341 60LED 40K 24V OC L100	15 W
911401779312	BCS341 18LED 30K 24V OC L30	4 W
911401779332	BCS341 18LED 40K 24V OC L30	4 W

Order Code	Full Product Name	Power Consumption
911401703953	BCS342 120LED 30K 24V OC L100	24 W
911401703983	BCS342 120LED 40K 24V OC L100	24 W
911401704253	BCS342 36LED 30K 24V OC L30	7.5 W
911401704283	BCS342 36LED 40K 24V OC L30	7.5 W

