



# UniStrip G4 – Best in Class Linear LED Surface Mounted Luminaire for Exterior Fixed and Dynamic Architectural Lighting Applications

## UniStrip G4

UniStrip G4 is a surface mounted, exterior-rated LED luminaire that is designed for façade and outdoor architectural lighting applications. One family that fits all your needs, wall washing, grazing and also linear flood lighting. The robust mechanical and unique optical designs make it ideal for illuminating buildings facades, bridges, overpasses and any application that requires a linear lighting solution. Available in white, monochromatic colors, RGB, RGBW and tunable white and DMX control option available with up to 8 pixels (8IDs) to give architects and designers the freedom to explore a wide range of concepts and design with no limitations.

### Benefits

- High and Low Power LEDs versions available
- Various spread lenses that fit all applications
- Adjustable brackets and through wiring for end-to-end connection

# UniStrip G4

## Features

- Six sub-families with power ranges from 3W to 120W
- DC and AC powered versions
- Narrow, medium, wide and asymmetric beams available
- Optional glare shields for more visual comfort

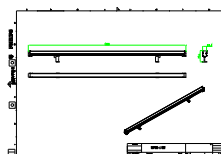
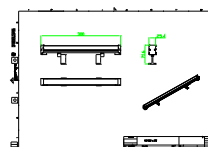
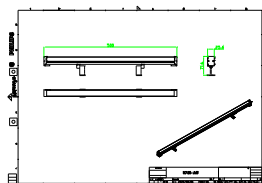
## Application

- Bridges, Monuments, Facades
- Landscape
- Parks and Plazas

## Warnings and Safety

- For outdoor use only

## Dimensional drawing



## Product details

159A3710 Detail Photo



159A3691 Detail Photo



Product details

159A3731 Detail Photo



General Information	
Driver included	No
Light Technical	
Color rendering index (CRI)	80
Controls and Dimming	
Dimmable	No
Mechanical and Housing	
Optical cover type	Clear glass
Housing Color	Dark gray
Mech. impact protection code	IK06
Ingress protection code	IP66
Approval and Application	
CE mark	Yes

Light Technical

Order Code	Full Product Name	Light source color	Correlated Color	
			Temperature (Nom)	Luminous Flux
911401779982	BCP386 12LED 27K 24V 60 L30	Warm white	2700 K	200 lm
911401780062	BCP386 12LED 30K 24V A11 L30	Warm white	3000 K	195 lm
911401780082	BCP386 12LED 40K 24V A11 L30	Neutral white	4000 K	205 lm
911401780192	BCP386 30LED 30K 24V 45 L50	Warm white	3000 K	490 lm
911401780232	BCP386 30LED 27K 24V 60 L50	Warm white	2700 K	495 lm
911401780292	BCP386 30LED 27K 24V A11 L50	Warm white	2700 K	485 lm
911401780312	BCP386 30LED 30K 24V A11 L50	Warm white	3000 K	485 lm
911401780332	BCP386 30LED 40K 24V A11 L50	Neutral white	4000 K	515 lm
911401780442	BCP386 60LED 30K 24V 45 L100	Warm white	3000 K	975 lm
911401780482	BCP386 60LED 27K 24V 60 L100	Warm white	2700 K	985 lm
911401780502	BCP386 60LED 30K 24V 60 L100	Warm white	3000 K	985 lm
911401780522	BCP386 60LED 40K 24V 60 L100	Neutral white	4000 K	1,045 lm
911401780562	BCP386 60LED 30K 24V A11 L100	Warm white	3000 K	960 lm
911401780582	BCP386 60LED 40K 24V A11 L100	Neutral white	4000 K	1,020 lm

Operating and Electrical

Order Code	Full Product Name	Power Consumption
911401779982	BCP386 12LED 27K 24V 60 L30	3 W
911401780062	BCP386 12LED 30K 24V A11 L30	3 W
911401780082	BCP386 12LED 40K 24V A11 L30	3 W
911401780192	BCP386 30LED 30K 24V 45 L50	7.5 W
911401780232	BCP386 30LED 27K 24V 60 L50	7.5 W
911401780292	BCP386 30LED 27K 24V A11 L50	7.5 W
911401780312	BCP386 30LED 30K 24V A11 L50	7.5 W

Order Code	Full Product Name	Power Consumption
911401780332	BCP386 30LED 40K 24V A11 L50	7.5 W
911401780442	BCP386 60LED 30K 24V 45 L100	15 W
911401780482	BCP386 60LED 27K 24V 60 L100	15 W
911401780502	BCP386 60LED 30K 24V 60 L100	15 W
911401780522	BCP386 60LED 40K 24V 60 L100	15 W
911401780562	BCP386 60LED 30K 24V A11 L100	15 W
911401780582	BCP386 60LED 40K 24V A11 L100	15 W

