



# UniStrip G4 - Best in Class Linear LED Surface Mounted Luminaire for Exterior Fixed and Dynamic Architectural Lighting Applications

## UniStrip G4

UniStrip G4 is a surface mounted, exterior-rated LED luminaire that is designed for façade and outdoor architectural lighting applications. One family that fits all your needs, wall washing, grazing and also linear flood lighting. The robust mechanical and unique optical designs make it ideal for illuminating buildings facades, bridges, overpasses and any application that requires a linear lighting solution. Available in white, monochromatic colors, RGB, RGBW and tunable white and DMX control option available with up to 8 pixels (8IDs) to give architects and designers the freedom to explore a wide range of concepts and design with no limitations.

### Benefits

- High and Low Power LEDs versions available
- Various spread lenses that fit all applications
- Adjustable brackets and through wiring for end-to-end connection

# UniStrip G4

## Features

- Six sub-families with power ranges from 3W to 120W
- DC and AC powered versions
- Narrow, medium, wide and asymmetric beams available
- Optional glare shields for more visual comfort

## Application

- Bridges, Monuments, Facades
- Landscape
- Parks and Plazas

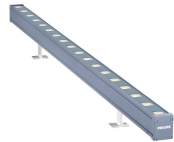
## Warnings and Safety

- For outdoor use only

## Versions

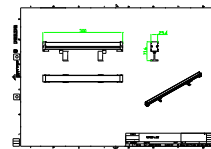
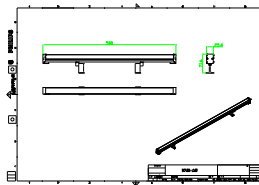


BCP382



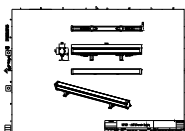
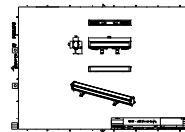
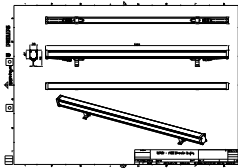
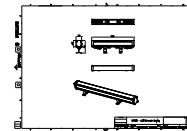
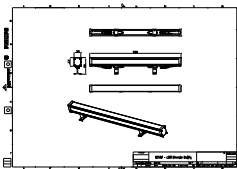
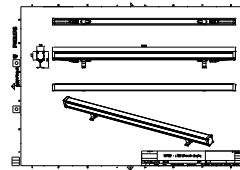
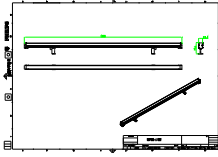
BCP381

## Dimensional drawing



# UniStrip G4

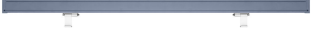
## Dimensional drawing



# UniStrip G4

## Product details

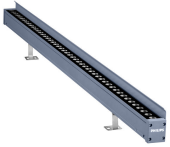
UniStrip G4 Detail Photo



UniStrip G4 Detail Photo



UniStrip G4 Detail Photo



UniStrip G4 Detail Photo



UniStrip G4 Detail Photo



159A3710 Detail Photo



UniStrip G4 Detail Photo



159A3691 Detail Photo



UniStrip G4 Detail Photo



UniStrip G4 Detail Photo



# UniStrip G4

## Product details

UniStrip G4 Detail Photo



UniStrip G4 Detail Photo



159A3731 Detail Photo



General Information	
Driver included	No
Mechanical and Housing	
Housing Color	Dark gray
Mech. impact protection code	IK06
Ingress protection code	IP66
Approval and Application	
CE mark	Yes

## General Information

Order Code	Full Product Name	Light source replaceable
911401779982	BCP386 12LED 27K 24V 60 L30	-
911401780062	BCP386 12LED 30K 24V A11 L30	-
911401780082	BCP386 12LED 40K 24V A11 L30	-
911401780192	BCP386 30LED 30K 24V 45 L50	-
911401780232	BCP386 30LED 27K 24V 60 L50	-
911401780292	BCP386 30LED 27K 24V A11 L50	-
911401780312	BCP386 30LED 30K 24V A11 L50	-
911401780332	BCP386 30LED 40K 24V A11 L50	-
911401780442	BCP386 60LED 30K 24V 45 L100	-
911401780482	BCP386 60LED 27K 24V 60 L100	-
911401780502	BCP386 60LED 30K 24V 60 L100	-
911401780522	BCP386 60LED 40K 24V 60 L100	-
911401780562	BCP386 60LED 30K 24V A11 L100	-
911401780582	BCP386 60LED 40K 24V A11 L100	-
911401780592	BCP386 60LED RGBWW 24V 45 L100 DMX	-

Order Code	Full Product Name	Light source replaceable
911401780602	BCP386 60LED RGBNW 24V 45 L100 DMX	-
911401780612	BCP386 60LED RGBWW 24V A11 L100 DMX	-
911401780622	BCP386 60LED RGBNW 24V A11 L100 DMX	-
911401739422	BCP382 36LED 30K 24V 17 L100	No
911401739642	BCP382 9LED 30K 24V 17 L30	No
911401739182	BCP382 18LED 30K 24V A2 L50	No
911401739402	BCP382 36LED 30K 24V A2 L100	No
911401738642	BCP381 12LED 30K 24V A2 L50	No
911401738802	BCP381 24LED 30K 24V A2 L100	No
911401738962	BCP381 6LED 30K 24V A2 L30	No
911401738862	BCP381 24LED 40K 24V 40 L100	No
911401739242	BCP382 18LED 40K 24V A2 L50	No
911401739262	BCP382 18LED 40K 24V 17 L50	No
911401739462	BCP382 36LED 40K 24V A2 L100	No

## Light Technical

Order Code	Full Product Name	Luminaire light beam		Correlated Color	Color rendering	Luminous Flux
		spread	Light source color	Temperature (Nom)	index (CRI)	
911401779982	BCP386 12LED 27K 24V 60 L30	-	Warm white	2700 K	80	200 lm
911401780062	BCP386 12LED 30K 24V A11 L30	-	Warm white	3000 K	80	195 lm
911401780082	BCP386 12LED 40K 24V A11 L30	-	Neutral white	4000 K	80	205 lm
911401780192	BCP386 30LED 30K 24V 45 L50	-	Warm white	3000 K	80	490 lm
911401780232	BCP386 30LED 27K 24V 60 L50	-	Warm white	2700 K	80	495 lm
911401780292	BCP386 30LED 27K 24V A11 L50	-	Warm white	2700 K	80	485 lm
911401780312	BCP386 30LED 30K 24V A11 L50	-	Warm white	3000 K	80	485 lm
911401780332	BCP386 30LED 40K 24V A11 L50	-	Neutral white	4000 K	80	515 lm
911401780442	BCP386 60LED 30K 24V 45 L100	-	Warm white	3000 K	80	975 lm
911401780482	BCP386 60LED 27K 24V 60 L100	-	Warm white	2700 K	80	985 lm
911401780502	BCP386 60LED 30K 24V 60 L100	-	Warm white	3000 K	80	985 lm
911401780522	BCP386 60LED 40K 24V 60 L100	-	Neutral white	4000 K	80	1,045 lm
911401780562	BCP386 60LED 30K 24V A11 L100	-	Warm white	3000 K	80	960 lm
911401780582	BCP386 60LED 40K 24V A11 L100	-	Neutral white	4000 K	80	1,020 lm
911401780592	BCP386 60LED RGBWW 24V 45 L100 DMX	-	Red, green, blue and white	-	-	720 lm
911401780602	BCP386 60LED RGBNW 24V 45 L100 DMX	-	Red, green, blue and white	-	-	750 lm
911401780612	BCP386 60LED RGBWW 24V A11 L100 DMX	-	Red, green, blue and white	-	-	695 lm
911401780622	BCP386 60LED RGBNW 24V A11 L100 DMX	-	Red, green, blue and white	-	-	730 lm
911401739422	BCP382 36LED 30K 24V 17 L100	17° x 17°	Warm white	3000 K	80	2,345 lm
911401739642	BCP382 9LED 30K 24V 17 L30	17° x 17°	Warm white	3000 K	80	610 lm
911401739182	BCP382 18LED 30K 24V A2 L50	16° x 35°	Warm white	3000 K	80	1,221 lm
911401739402	BCP382 36LED 30K 24V A2 L100	16° x 35°	Warm white	3000 K	80	2,393 lm
911401738642	BCP381 12LED 30K 24V A2 L50	16° x 35°	Warm white	3000 K	80	848 lm
911401738802	BCP381 24LED 30K 24V A2 L100	16° x 35°	Warm white	3000 K	80	1,663 lm
911401738962	BCP381 6LED 30K 24V A2 L30	16° x 35°	Warm white	3000 K	80	432 lm
911401738862	BCP381 24LED 40K 24V 40 L100	40° x 40°	Neutral white	4000 K	80	1,783 lm
911401739242	BCP382 18LED 40K 24V A2 L50	16° x 35°	Neutral white	4000 K	80	1,318 lm
911401739262	BCP382 18LED 40K 24V 17 L50	17° x 17°	Neutral white	4000 K	80	1,292 lm
911401739462	BCP382 36LED 40K 24V A2 L100	16° x 35°	Neutral white	4000 K	80	2,584 lm

## Operating and Electrical

Order Code	Full Product Name	Power Consumption	Order Code	Full Product Name	Power Consumption
911401779982	BCP386 12LED 27K 24V 60 L30	3 W	911401780602	BCP386 60LED RGBNW 24V 45 L100 DMX	15 W
911401780062	BCP386 12LED 30K 24V A11 L30	3 W	911401780612	BCP386 60LED RGBWW 24V A11 L100 DMX	15 W
911401780082	BCP386 12LED 40K 24V A11 L30	3 W	911401780622	BCP386 60LED RGBNW 24V A11 L100 DMX	15 W
911401780192	BCP386 30LED 30K 24V 45 L50	7.5 W	911401739422	BCP382 36LED 30K 24V 17 L100	36 W
911401780232	BCP386 30LED 27K 24V 60 L50	7.5 W	911401739642	BCP382 9LED 30K 24V 17 L30	9 W
911401780292	BCP386 30LED 27K 24V A11 L50	7.5 W	911401739182	BCP382 18LED 30K 24V A2 L50	18 W
911401780312	BCP386 30LED 30K 24V A11 L50	7.5 W	911401739402	BCP382 36LED 30K 24V A2 L100	36 W
911401780332	BCP386 30LED 40K 24V A11 L50	7.5 W	911401738642	BCP381 12LED 30K 24V A2 L50	12 W
911401780442	BCP386 60LED 30K 24V 45 L100	15 W	911401738802	BCP381 24LED 30K 24V A2 L100	24 W
911401780482	BCP386 60LED 27K 24V 60 L100	15 W	911401738962	BCP381 6LED 30K 24V A2 L30	6 W
911401780502	BCP386 60LED 30K 24V 60 L100	15 W	911401738862	BCP381 24LED 40K 24V 40 L100	24 W
911401780522	BCP386 60LED 40K 24V 60 L100	15 W	911401739242	BCP382 18LED 40K 24V A2 L50	18 W
911401780562	BCP386 60LED 30K 24V A11 L100	15 W	911401739262	BCP382 18LED 40K 24V 17 L50	18 W
911401780582	BCP386 60LED 40K 24V A11 L100	15 W	911401739462	BCP382 36LED 40K 24V A2 L100	36 W
911401780592	BCP386 60LED RGBWW 24V 45 L100 DMX	15 W			

## Controls and Dimming

Order Code	Full Product Name	Dimmable
911401779982	BCP386 12LED 27K 24V 60 L30	No
911401780062	BCP386 12LED 30K 24V A11 L30	No
911401780082	BCP386 12LED 40K 24V A11 L30	No
911401780192	BCP386 30LED 30K 24V 45 L50	No
911401780232	BCP386 30LED 27K 24V 60 L50	No
911401780292	BCP386 30LED 27K 24V A11 L50	No
911401780312	BCP386 30LED 30K 24V A11 L50	No
911401780332	BCP386 30LED 40K 24V A11 L50	No
911401780442	BCP386 60LED 30K 24V 45 L100	No
911401780482	BCP386 60LED 27K 24V 60 L100	No
911401780502	BCP386 60LED 30K 24V 60 L100	No
911401780522	BCP386 60LED 40K 24V 60 L100	No
911401780562	BCP386 60LED 30K 24V A11 L100	No
911401780582	BCP386 60LED 40K 24V A11 L100	No
911401780592	BCP386 60LED RGBWW 24V 45 L100 DMX	Yes

Order Code	Full Product Name	Dimmable
911401780602	BCP386 60LED RGBNW 24V 45 L100 DMX	Yes
911401780612	BCP386 60LED RGBWW 24V A11 L100 DMX	Yes
911401780622	BCP386 60LED RGBNW 24V A11 L100 DMX	Yes
911401739422	BCP382 36LED 30K 24V 17 L100	No
911401739642	BCP382 9LED 30K 24V 17 L30	No
911401739182	BCP382 18LED 30K 24V A2 L50	No
911401739402	BCP382 36LED 30K 24V A2 L100	No
911401738642	BCP381 12LED 30K 24V A2 L50	No
911401738802	BCP381 24LED 30K 24V A2 L100	No
911401738962	BCP381 6LED 30K 24V A2 L30	No
911401738862	BCP381 24LED 40K 24V 40 L100	No
911401739242	BCP382 18LED 40K 24V A2 L50	No
911401739262	BCP382 18LED 40K 24V 17 L50	No
911401739462	BCP382 36LED 40K 24V A2 L100	No

## Mechanical and Housing

Order Code	Full Product Name	Optical cover type
911401779982	BCP386 12LED 27K 24V 60 L30	Clear glass
911401780062	BCP386 12LED 30K 24V A11 L30	Clear glass
911401780082	BCP386 12LED 40K 24V A11 L30	Clear glass
911401780192	BCP386 30LED 30K 24V 45 L50	Clear glass
911401780232	BCP386 30LED 27K 24V 60 L50	Clear glass
911401780292	BCP386 30LED 27K 24V A11 L50	Clear glass
911401780312	BCP386 30LED 30K 24V A11 L50	Clear glass
911401780332	BCP386 30LED 40K 24V A11 L50	Clear glass
911401780442	BCP386 60LED 30K 24V 45 L100	Clear glass
911401780482	BCP386 60LED 27K 24V 60 L100	Clear glass
911401780502	BCP386 60LED 30K 24V 60 L100	Clear glass
911401780522	BCP386 60LED 40K 24V 60 L100	Clear glass
911401780562	BCP386 60LED 30K 24V A11 L100	Clear glass
911401780582	BCP386 60LED 40K 24V A11 L100	Clear glass
911401780592	BCP386 60LED RGBWW 24V 45 L100 DMX	Clear glass

Order Code	Full Product Name	Optical cover type
911401780602	BCP386 60LED RGBNW 24V 45 L100 DMX	Clear glass
911401780612	BCP386 60LED RGBWW 24V A11 L100 DMX	Clear glass
911401780622	BCP386 60LED RGBNW 24V A11 L100 DMX	Clear glass
911401739422	BCP382 36LED 30K 24V 17 L100	Clear flat
911401739642	BCP382 9LED 30K 24V 17 L30	Clear flat
911401739182	BCP382 18LED 30K 24V A2 L50	Clear flat
911401739402	BCP382 36LED 30K 24V A2 L100	Clear flat
911401738642	BCP381 12LED 30K 24V A2 L50	Clear flat
911401738802	BCP381 24LED 30K 24V A2 L100	Clear flat
911401738962	BCP381 6LED 30K 24V A2 L30	Clear flat
911401738862	BCP381 24LED 40K 24V 40 L100	Clear flat
911401739242	BCP382 18LED 40K 24V A2 L50	Clear flat
911401739262	BCP382 18LED 40K 24V 17 L50	Clear flat
911401739462	BCP382 36LED 40K 24V A2 L100	Clear flat

## Approval and Application

Order Code	Full Product Name	Flammability mark
911401779982	BCP386 12LED 27K 24V 60 L30	-
911401780062	BCP386 12LED 30K 24V A11 L30	-
911401780082	BCP386 12LED 40K 24V A11 L30	-
911401780192	BCP386 30LED 30K 24V 45 L50	-
911401780232	BCP386 30LED 27K 24V 60 L50	-
911401780292	BCP386 30LED 27K 24V A11 L50	-
911401780312	BCP386 30LED 30K 24V A11 L50	-
911401780332	BCP386 30LED 40K 24V A11 L50	-
911401780442	BCP386 60LED 30K 24V 45 L100	-
911401780482	BCP386 60LED 27K 24V 60 L100	-
911401780502	BCP386 60LED 30K 24V 60 L100	-
911401780522	BCP386 60LED 40K 24V 60 L100	-
911401780562	BCP386 60LED 30K 24V A11 L100	-

Order Code	Full Product Name	Flammability mark
911401780582	BCP386 60LED 40K 24V A11 L100	-
911401780592	BCP386 60LED RGBWW 24V 45 L100 DMX	-
911401780602	BCP386 60LED RGBNW 24V 45 L100 DMX	-
911401780612	BCP386 60LED RGBWW 24V A11 L100 DMX	-
911401780622	BCP386 60LED RGBNW 24V A11 L100 DMX	-
911401739422	BCP382 36LED 30K 24V 17 L100	For mounting on normally flammable surfaces
911401739642	BCP382 9LED 30K 24V 17 L30	For mounting on normally flammable surfaces

## UniStrip G4

Order Code	Full Product Name	Flammability mark
911401739182	BCP382 18LED 30K 24V A2 L50	For mounting on normally flammable surfaces
911401739402	BCP382 36LED 30K 24V A2 L100	For mounting on normally flammable surfaces
911401738642	BCP381 12LED 30K 24V A2 L50	For mounting on normally flammable surfaces
911401738802	BCP381 24LED 30K 24V A2 L100	For mounting on normally flammable surfaces
911401738962	BCP381 6LED 30K 24V A2 L30	For mounting on normally flammable surfaces

Order Code	Full Product Name	Flammability mark
911401738862	BCP381 24LED 40K 24V 40 L100	For mounting on normally flammable surfaces
911401739242	BCP382 18LED 40K 24V A2 L50	For mounting on normally flammable surfaces
911401739262	BCP382 18LED 40K 24V 17 L50	For mounting on normally flammable surfaces
911401739462	BCP382 36LED 40K 24V A2 L100	For mounting on normally flammable surfaces

