



Creating attractive inner-city landscapes

OptiSpace

OptiSpace is a creative bollard solution which enables you to build a more attractive, citizen-centric inner-city space by avoiding verticalization of the urban landscape. OptiSpace delivers all this and more while delivering an attractive TCO for your investment. Enabled by the different control options you can reduce energy consumption and minimize TCO further and thanks to the excellent and optimized light distribution options you can maximize spacing between the bollards, thereby minimizing the number of light points needed to be installed. To support different design schemes, OptiSpace is also available in different colors: Ultra Dark Grey is the standard color and other colors are available on request.

Benefits

- Discreet design nicely blending into modern inner-city spaces
- Attractive Total Cost of Ownership
- Compliant with key national and international regulation in Europe

Features

- Enabling wide spacing, up to 20 meters
- Delivering up to 4300 lm light output
- IP66 and IK10 ratings
- Warm White (WW) / Neutral White (NW) color temperature options
- Choice of both asymmetric and symmetric optics
- Ground section accessory

Application

- Parks and plazas
- Pedestrian and cycle paths
- Building fronts and car parks

Versions

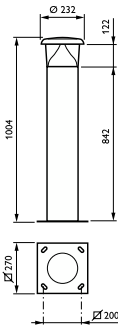


OptiSpace-BCB500

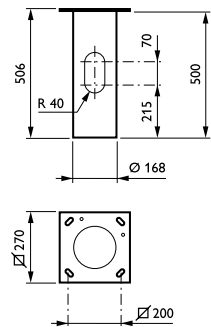


OptiSpace-BCB500 ANB

Dimensional drawing



Dimensional drawing



Product details

OptiSpace-BCB500 -5DPP.TIF



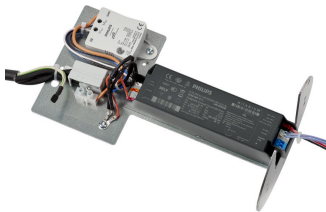
OptiSpace-BCB500 -1DPP.TIF



Product details



OptiSpace-BCB500 -9DPP.TIF



OptiSpace-BCB500 -7DPP.TIF



OptiSpace-BCB500 -2DPP.TIF



OptiSpace-BCB500 -3DPP.TIF



OptiSpace-BCB500 -4DPP.TIF



OptiSpace-BCB500 -8DPP.TIF



OptiSpace-BCB500 -6DPP.TIF



OptiSpace-BCB500 -10DPP.TIF

General Information	
Driver included	Yes
Light source replaceable	Yes
Number of gear units	1 unit
Service tag	Yes
Light Technical	
Light source color	740 neutral white
Correlated Color Temperature (Nom)	4000 K
Color rendering index (CRI)	70
Upward light output ratio	0
Operating and Electrical	
Surge Protection (Common/ Differential)	Surge protection level until 6 kV differential mode and 6 kV common mode
Controls and Dimming	
Dimmable	No
Mechanical and Housing	
Housing Color	Black
Mech. impact protection code	IK10
Ingress protection code	IP66
Standard tilt angle side entry	0°
Approval and Application	
CE mark	Yes
Flammability mark	For mounting on normally flammable surfaces
Product Data	
Product family code	BCB500

General Information

Order Code	Full Product Name	Lamp family code
912300024101	BCB500 LED56-4S/740 S DGR	LED56
912300024103	BCB500 LED27-4S/740 ANB14 II A DGR	LED27
912300060280	BCB500 LED16-4S/740 PSU II S DGR MSP CLO	LED16

Light Technical

Order Code	Full Product Name	Luminaire light beam	Luminous	Optic type
		spread	Flux	outdoor
912300024101	BCB500 LED56-4S/740 S DGR	177°	4,900 lm	Symmetrical
912300024103	BCB500 LED27-4S/740 ANB14 II A DGR	7° - 9° x 177°	2,400 lm	Asymmetrical

Order Code	Full Product Name	Luminaire light beam	Luminous	Optic type
		spread	Flux	outdoor
912300060280	BCB500 LED16-4S/740 PSU II S DGR MSP CLO	177°	1,432 lm	Symmetrical

Operating and Electrical

Order Code	Full Product Name	Power Consumption
912300024101	BCB500 LED56-4S/740 S DGR	37.2 W

Order Code	Full Product Name	Power Consumption
912300024103	BCB500 LED27-4S/740 ANB14 II A DGR	20 W
912300060280	BCB500 LED16-4S/740 PSU II S DGR MSP CLO	11.3 W

Mechanical and Housing

Order Code	Full Product Name	Optical cover type	Standard tilt angle posttop
912300024101	BCB500 LED56-4S/740 S DGR	Polycarbonate cover and gloss high-reflective optic	0°
912300024103	BCB500 LED27-4S/740 ANB14 II A DGR	Polycarbonate cover and gloss high-reflective optic	0°

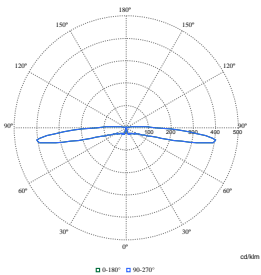
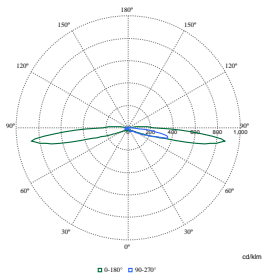
Order Code	Full Product Name	Optical cover type	Standard tilt angle posttop
912300060280	BCB500 LED16-4S/740 PSU II S DGR MSP CLO	Polycarbonate bowl/cover clear	-

Over Time Performance (IEC Compliant)

Order Code	Full Product Name	Driver failure rate at 5000 h
912300024101	BCB500 LED56-4S/740 S DGR	0.5 %
912300024103	BCB500 LED27-4S/740 ANB14 II A DGR	0.5 %

Order Code	Full Product Name	Driver failure rate at 5000 h
912300060280	BCB500 LED16-4S/740 PSU II S DGR MSP CLO	-

Polar Wide Diagrams



Polar Normal (separate) - BCB500I - 912300024103

Polar Normal (separate) - BCB500I - 912300024101

