



Creating attractive inner-city landscapes

OptiSpace is a creative bollard solution which enables you to build a more attractive, citizen-centric inner-city space by avoiding verticalization of the urban landscape. OptiSpace delivers all this and more while delivering an attractive TCO for your investment. Enabled by the different control options you can reduce energy consumption and minimize TCO further and thanks to the excellent and optimized light distribution options you can maximize spacing between the bollards, thereby minimizing the number of light points needed to be installed. To support different design schemes, OptiSpace is also available in different colors: Ultra Dark Grey is the standard color and other colors are available on request.

Benefits

- Discreet design nicely blending into modern inner-city spaces
- Attractive Total Cost of Ownership
- Compliant with key national and international regulation in Europe

Applications

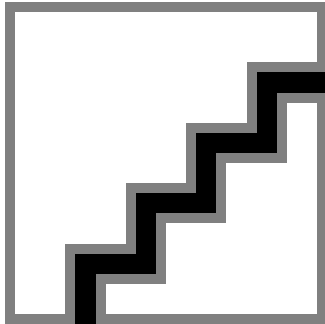
- Parks and plazas
- Pedestrian and cycle paths
- Building fronts and car parks

Features

- Enabling wide spacing, up to 20 meters
- Delivering up to 4300 lm light output
- IP66 and IK10 ratings

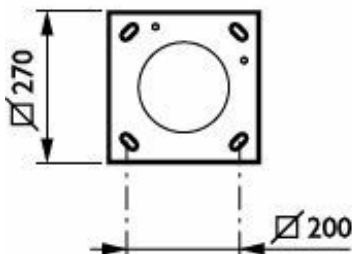
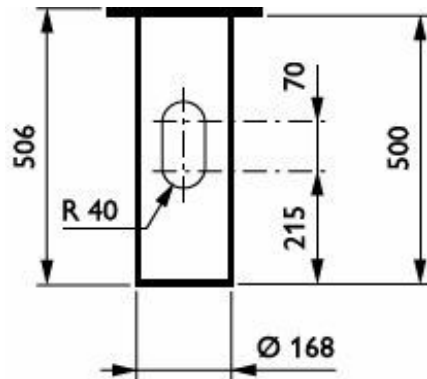
- Warm White (WW) / Neutral White (NW) color temperature options
- Choice of both asymmetric and symmetric optics
- Ground section accessory

Versions



OptiSpace-BCB500 ANB

Dimensional drawing



OptiSpace

General Information

Lamp family code	LED16 [LED module 1600 lm]
Light source replaceable	Yes
Number of gear units	1 unit
Driver included	Yes
Service tag	Yes

Light Technical

Upward light output ratio	0
Luminous Flux	1,390 lm
Correlated Color Temperature (Nom)	3000 K
Color rendering index (CRI)	80
Light source color	830 warm white
Luminaire light beam spread	177°
Optic type outdoor	Symmetrical

Operating and Electrical

Power Consumption	12.8 W
Surge Protection (Common/Differential)	Surge protection level until 6 kV differential mode and 6 kV common mode

Controls and Dimming

Dimmable	No
----------	----

Mechanical and Housing

Housing Color	Black
Ingress protection code	IP66 [Dust penetration-protected, jet-proof]
Mech. impact protection code	IK10 [20 J vandal-resistant]
Standard tilt angle posttop	-
Standard tilt angle side entry	0°
Optical cover type	Polycarbonate bowl/cover clear

Approval and Application

Flammability mark	For mounting on normally flammable surfaces
CE mark	Yes

Product Data

Product family code

BCB500 [OPTISPACE BOLLARD]