



Creating attractive inner-city landscapes

OptiSpace

OptiSpace is a creative bollard solution which enables you to build a more attractive, citizen-centric inner-city space by avoiding verticalization of the urban landscape. OptiSpace delivers all this and more while delivering an attractive TCO for your investment. Enabled by the different control options you can reduce energy consumption and minimize TCO further and thanks to the excellent and optimized light distribution options you can maximize spacing between the bollards, thereby minimizing the number of light points needed to be installed. To support different design schemes, OptiSpace is also available in different colors: Ultra Dark Grey is the standard color and other colors are available on request.

Benefits

- Discreet design nicely blending into modern inner-city spaces
- Attractive Total Cost of Ownership
- Compliant with key national and international regulation in Europe

Features

- Enabling wide spacing, up to 20 meters
- Delivering up to 4300 lm light output
- IP66 and IK10 ratings
- Warm White (WW) / Neutral White (NW) color temperature options
- Choice of both asymmetric and symmetric optics
- Ground section accessory

Application

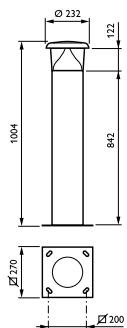
- Parks and plazas
- Pedestrian and cycle paths
- Building fronts and car parks

Versions

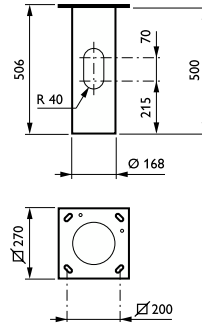


OptiSpace-BCB500

Dimensional drawing



Dimensional drawing



Product details

OptiSpace-BCB500 -5DPP.TIF



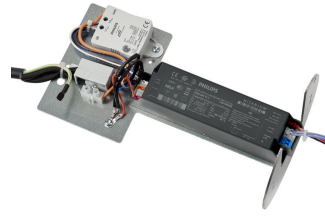
OptiSpace-BCB500 -1DPP.TIF



Product details



OptiSpace-BCB500 -9DPP.TIF



OptiSpace-BCB500 -7DPP.TIF



OptiSpace-BCB500 -2DPP.TIF



OptiSpace-BCB500 -3DPP.TIF



OptiSpace-BCB500 -4DPP.TIF



OptiSpace-BCB500 -8DPP.TIF



OptiSpace-BCB500 -6DPP.TIF



OptiSpace-BCB500 -10DPP.TIF

General Information	
Driver included	Yes
Light source replaceable	Yes
Number of gear units	1 unit
Service tag	Yes
Light Technical	
Upward light output ratio	0
Operating and Electrical	
Surge Protection (Common/Differential)	Surge protection level until 6 kV differential mode and 6 kV common mode
Controls and Dimming	
Dimmable	No
Mechanical and Housing	
Housing Color	Black
Mech. impact protection code	IK10
Ingress protection code	IP66
Standard tilt angle side entry	0°
Approval and Application	
CE mark	Yes
Flammability mark	For mounting on normally flammable surfaces
Product Data	
Product family code	BCB500

General Information

Order Code	Full Product Name	Lamp family code
912300024101	BCB500 LED56-4S/740 S DGR	LED56
912300024102	BCB500 LED56-4S/740 ANB14 II S DGR	LED56
912300024103	BCB500 LED27-4S/740 ANB14 II A DGR	LED27
912300060278	BCB500 LED16-4S/740 PSU II A DGR MSP CLO	LED16
912300060279	BCB500 LED16-4S/830 PSU II A DGR MSP CLO	LED16
912300060280	BCB500 LED16-4S/740 PSU II S DGR MSP CLO	LED16
912300060281	BCB500 LED16-4S/830 PSU II S DGR MSP CLO	LED16
912300060282	BCB500 LED10-4S/740 PSU II A DGR MSP CLO	LED10
912300060283	BCB500 LED10-4S/830 PSU II A DGR MSP CLO	LED10

Light Technical (1/2)

Order Code	Full Product Name	Luminaire light beam spread	Light source color	Correlated Color Temperature (Nom)	Color rendering index (CRI)
912300024101	BCB500 LED56-4S/740 S DGR	177°	740 neutral white	4000 K	70
912300024102	BCB500 LED56-4S/740 ANB14 II S DGR	177°	740 neutral white	4000 K	70
912300024103	BCB500 LED27-4S/740 ANB14 II A DGR	7° - 9° x 177°	740 neutral white	4000 K	70
912300060278	BCB500 LED16-4S/740	21° - 26° x 200°	740 neutral white	4000 K	70

Order Code	Full Product Name	Luminaire light beam spread	Light source color	Correlated Color Temperature (Nom)	Color rendering index (CRI)
	PSU II A DGR MSP CLO				
912300060279	BCB500 LED16-4S/830 PSU II A DGR MSP CLO	21° - 26° x 200°	830 warm white	3000 K	80
912300060280	BCB500 LED16-4S/740 PSU II S DGR MSP CLO	177°	740 neutral white	4000 K	70

Order Code	Full Product Name	Luminaire light beam spread	Light source color	Correlated Color	Color rendering
				Temperature (Nom)	index (CRI)
912300060281	BCB500	177°	830	3000 K	80
	LED16-4S/830		warm		
	PSU II S DGR		white		
	MSP CLO				
912300060282	BCB500	21° - 26° x	740	4000 K	70
	LED10-4S/740	200°	neutral		
	PSU II A DGR		white		
	MSP CLO				

Order Code	Full Product Name	Luminaire light beam spread	Light source color	Correlated Color	Color rendering
				Temperature (Nom)	index (CRI)
912300060283	BCB500	21° - 26° x	830	3000 K	80
	LED10-4S/830	200°	warm		
	PSU II A DGR		white		
	MSP CLO				

Light Technical (2/2)

Order Code	Full Product Name	Luminous Flux	Optic type
			outdoor
912300024101	BCB500 LED56-4S/740 S DGR	4,900 lm	Symmetrical
912300024102	BCB500 LED56-4S/740 ANB14 II S DGR	4,900 lm	Symmetrical
912300024103	BCB500 LED27-4S/740 ANB14 II A DGR	2,400 lm	Asymmetrical
912300060278	BCB500 LED16-4S/740 PSU II A DGR MSP CLO	1,450 lm	Asymmetrical
912300060279	BCB500 LED16-4S/830 PSU II A DGR MSP CLO	1,420 lm	Asymmetrical

Order Code	Full Product Name	Luminous Flux	Optic type
			outdoor
912300060280	BCB500 LED16-4S/740 PSU II S DGR MSP CLO	1,432 lm	Symmetrical
912300060281	BCB500 LED16-4S/830 PSU II S DGR MSP CLO	1,390 lm	Symmetrical
912300060282	BCB500 LED10-4S/740 PSU II A DGR MSP CLO	906 lm	Asymmetrical
912300060283	BCB500 LED10-4S/830 PSU II A DGR MSP CLO	887 lm	Asymmetrical

Operating and Electrical

Order Code	Full Product Name	Power Consumption
912300024101	BCB500 LED56-4S/740 S DGR	37.2 W
912300024102	BCB500 LED56-4S/740 ANB14 II S DGR	37.2 W
912300024103	BCB500 LED27-4S/740 ANB14 II A DGR	20 W
912300060278	BCB500 LED16-4S/740 PSU II A DGR MSP CLO	12.3 W
912300060279	BCB500 LED16-4S/830 PSU II A DGR MSP CLO	14.7 W

Order Code	Full Product Name	Power Consumption
912300060280	BCB500 LED16-4S/740 PSU II S DGR MSP CLO	11.3 W
912300060281	BCB500 LED16-4S/830 PSU II S DGR MSP CLO	12.8 W
912300060282	BCB500 LED10-4S/740 PSU II A DGR MSP CLO	7.6 W
912300060283	BCB500 LED10-4S/830 PSU II A DGR MSP CLO	9.1 W

Mechanical and Housing

Order Code	Full Product Name	Optical cover type	Standard tilt angle
			posttop
912300024101	BCB500 LED56-4S/740 S DGR	Polycarbonate cover and gloss high-reflective optic	0°
912300024102	BCB500 LED56-4S/740 ANB14 II S DGR	Polycarbonate cover and gloss high-reflective optic	0°
912300024103	BCB500 LED27-4S/740 ANB14 II A DGR	Polycarbonate cover and gloss high-reflective optic	0°
912300060278	BCB500 LED16-4S/740 PSU II A DGR MSP CLO	Polycarbonate bowl/cover clear	-
912300060279	BCB500 LED16-4S/830 PSU II A DGR MSP CLO	Polycarbonate bowl/cover clear	-

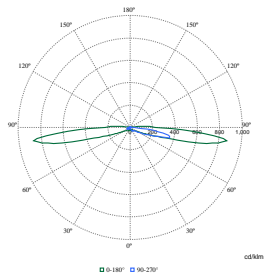
Order Code	Full Product Name	Optical cover type	Standard tilt angle
			posttop
912300060280	BCB500 LED16-4S/740 PSU II S DGR MSP CLO	Polycarbonate bowl/cover clear	-
912300060281	BCB500 LED16-4S/830 PSU II S DGR MSP CLO	Polycarbonate bowl/cover clear	-
912300060282	BCB500 LED10-4S/740 PSU II A DGR MSP CLO	Polycarbonate bowl/cover clear	-
912300060283	BCB500 LED10-4S/830 PSU II A DGR MSP CLO	Polycarbonate bowl/cover clear	-

Over Time Performance (IEC Compliant)

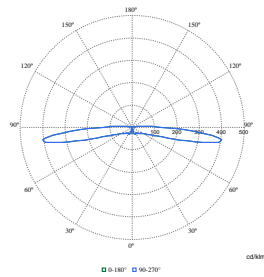
Order Code	Full Product Name	Driver failure rate at 5000 h
912300024101	BCB500 LED56-4S/740 S DGR	0.5 %
912300024102	BCB500 LED56-4S/740 ANB14 II S DGR	0.5 %
912300024103	BCB500 LED27-4S/740 ANB14 II A DGR	0.5 %
912300060278	BCB500 LED16-4S/740 PSU II A DGR MSP CLO -	-
912300060279	BCB500 LED16-4S/830 PSU II A DGR MSP CLO -	-

Order Code	Full Product Name	Driver failure rate at 5000 h
912300060280	BCB500 LED16-4S/740 PSU II S DGR MSP CLO -	-
912300060281	BCB500 LED16-4S/830 PSU II S DGR MSP CLO -	-
912300060282	BCB500 LED10-4S/740 PSU II A DGR MSP CLO -	-
912300060283	BCB500 LED10-4S/830 PSU II A DGR MSP CLO -	-

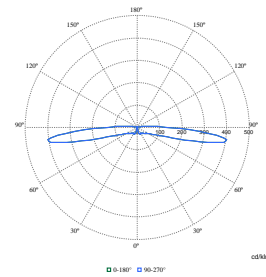
Polar Wide Diagrams



Polar Normal (separate) - BCB500I - 912300024103



Polar Normal (separate) - BCB500I - 912300024101



Polar Normal (separate) - BCB500I - 912300024102

