



Swivel device 9MX056 MAXOS TL- D / TL5

Maxos accessories

The swivel device is a versatile mechanical connecting device for Maxos TL-D and TL5 light-lines and enables variable angles between the light-lines. The minimum angle is 45 degrees. Due to its attractive design it is often used in application areas such as shops, schools and museums. Up to four light-lines can be connected with one swivel device. The housing is made of plastic, with a white or silver coating, and with inner supporting elements made of steel. If needed, the swivel device can accommodate lighting control sensors, loudspeakers, etc. It is pre-mounted with an adjustable quick hanger with a 1.25m steel suspension wire. One dedicated coupling piece (9MX056 CP-SD WH/SI) per trunking section is necessary to connect the trunking to the swivel device. Electrical components for mains feed-through have to be ordered as required.

Benefits

-

Maxos accessories

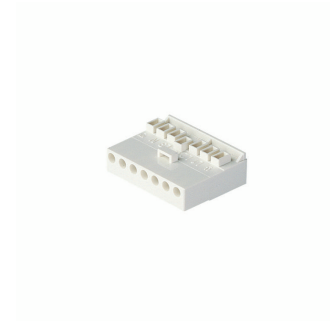
Versions



9MX056 CP WH



9MX056 BC49 SI



Electrical supply connector 7-pole



9MX056 CPI



Maxos_end_pieces_electrical_connector



9MX056 CP SI

Product details



Maxos 4MX056 TL-D extended trunking section M300/E300/ M600/E600 and blind cover, used to close the spaces in the trunking where no electrical units are mounted

Mechanical and Housing

Ingress protection code	-
Ingress protection code	-

Approval and Application

CE mark	Yes
CE mark	Yes

Product Data

Product family code	9MX056
Product family code	9MX056

Maxos accessories

Operating and Electrical

Order Code	Full Product Name	Protection class IEC	Protection class IEC	Input Voltage	Input Voltage	Line Frequency	Line Frequency
910681003226	9MX056 CP WH	-	-	-	-	-	-
910683001626	9MX056 BC49 WH	-	-	-	-	-	-
910683001726	9MX056 BC49 SI	-	-	-	-	-	-
910683007926	9MX056 BC58 WH	-	-	-	-	-	-
910606293921	9MX056 EC7 (10PCS)	Safety class I	Safety class I	220 to 240 V	220 to 240 V	50 to 60 Hz	50 to 60 Hz
910681003526	9MX056 CPI	-	-	-	-	-	-
910683002026	9MX056 EP WH SET	-	-	-	-	-	-
910681003326	9MX056 CP SI	-	-	-	-	-	-

Mechanical and Housing

Order Code	Full Product Name	Accessory colour	Order Code	Full Product Name	Accessory colour
910681003226	9MX056 CP WH	White	910606293921	9MX056 EC7 (10PCS)	-
910683001626	9MX056 BC49 WH	White	910681003526	9MX056 CPI	-
910683001726	9MX056 BC49 SI	Silver	910683002026	9MX056 EP WH SET	White
910683007926	9MX056 BC58 WH	White	910681003326	9MX056 CP SI	Silver

