



All-in-one Solar street light range up-to 18000 lumens, suitable for high ambient temperature applications

GreenVision All-in-one Solar Street Light

Integrated solar street light with Lithium Ferro Phosphate battery, solar panel and MPPT charge controller built into the luminaire. Pressure die cast aluminium for sturdiness and long life. Specially designed pole mounting bracket allows different tilt angles, lateral and pole top mounting. Adjustable LED module for better distribution of light when required.

Benefits

- Brings light to areas without access to electric grid
- Preserves landscape as no trenching for cabling required
- Sturdy construction
- Suitable for high ambient temperature operation
- Saves energy, environment friendly

GreenVision All-in-one Solar Street Light

Features

- High luminous efficacy of > 180 lm/Watt to maximize battery performance
- MPPT charge controller for maximum efficiency
- Specially designed pole mounting bracket with adjustable tilt angles, which can also be used in post top & lateral mounting positions
- 3G compliant pressure die-cast aluminum housing for sturdiness and excellent heat dissipation
- Factory set dimming profile along with microwave sensor for run time maximization. Dimming can be configured at site with the help of configuration remote controller.
- Self diagnostic feature with LED Indicators.

Application

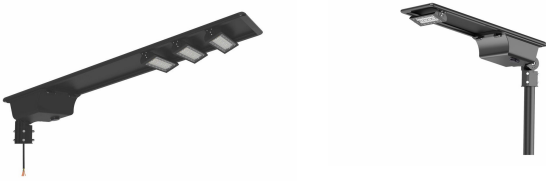
- Road and streetlighting
- Perimeter lighting
- Parks, pedestrian paths, cycle tracks
- Shopping centers, plazas
- Industries, office and school campuses
- Sub-urban areas

Versions



GreenVision All-in-one Solar Street Light

Versions

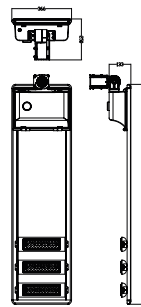
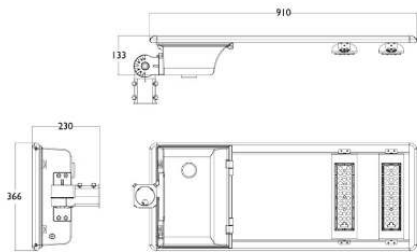


Solar Street Lights

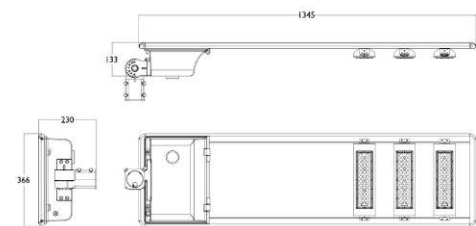
GreenVision SolarAIO-BRP715 LED70

Dimensional drawing

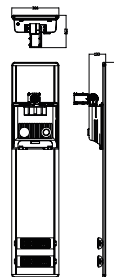
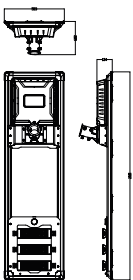
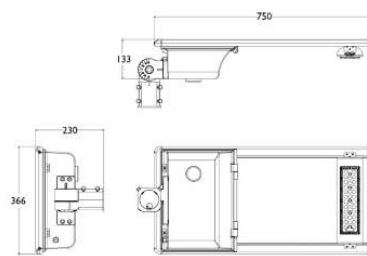
BRP715 LED90 CW Solar



BRP715 LED180 CW Solar



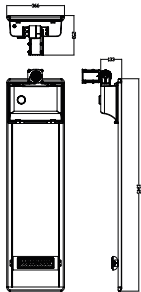
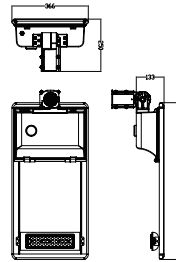
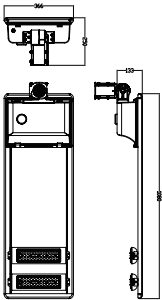
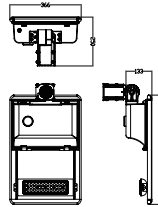
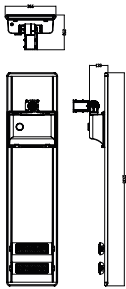
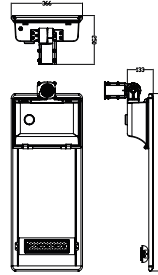
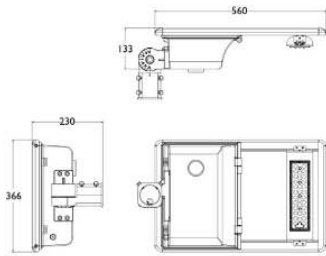
BRP715 LED70 CW Solar



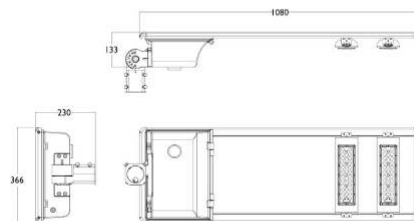
GreenVision All-in-one Solar Street Light

Dimensional drawing

BRP715 LED50 CW Solar



BRP715 LED120 CW Solar



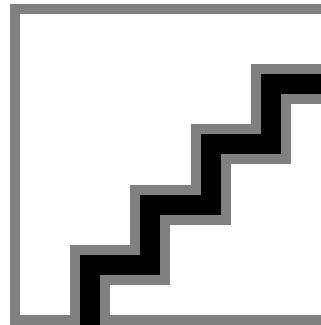
GreenVision All-in-one Solar Street Light

Dimensional drawing

Product details



Solar Street Lights



Solar Street Lights



Solar Street Lights



Solar Street Lights



Solar Street Lights

GreenVision All-in-one Solar Street Light

Light Technical

| | |
|------------------------------------|--------|
| Correlated Color Temperature (Nom) | 5700 K |
| Color rendering index (CRI) | >70 |

Operating and Electrical

| | |
|---------------------------------------|------------------|
| Battery charging & discharging cycles | 2000 |
| Charge controller type | MPPT |
| Panel type | Mono crystalline |

Controls and Dimming

| | |
|-----------------|--------------|
| Dimmable | Yes |
| Configurability | Configurable |

Mechanical and Housing

| | |
|-------------------------|---------|
| Battery location | Inbuilt |
| Housing Color | Black |
| Ingress protection code | IP65 |
| Overall height | 133 mm |

Approval and Application

| | |
|---------------------------|-----------------|
| Ambient temperature range | -10 °C to 55 °C |
|---------------------------|-----------------|

Operating and Electrical (1/2)

| Order Code | Full Product Name | Battery ampere hour | Battery type | Battery voltage | Cable connection kit |
|--------------|---|------------------------|----------------------------|--------------------|-------------------------|
| 911401625708 | BRP715 LED90 CW Solar | 24 Ah | Lithium Ferro Phosphate | 12.8 V | - |
| 911401668809 | BRP715 LED120 CW Solar hybrid 3Y | 18 Ah | LiFePO4 | 12.8 V | Excluded |
| 911401626208 | BRP715 LED90 CW Solar Pro | 48 Ah | LiFePO4 | 12.8 V | - |
| 911401627208 | BRP715 LED90 CW Solar Pro 5 | 48 Ah | LiFePO4 | 12.8 V | - |
| 911401668508 | BRP715 LED90 WW Solar | 24 Ah | LiFePO4 | 12.8 V | - |
| 911401669008 | BRP715 LED90 WW Solar Pro | 48 Ah | LiFePO4 | 12.8 V | - |
| 911401669309 | BRP715 LED120 CW Solar Pro hybrid 3Y | 30 Ah | LiFePO4 | 12.8 V | Excluded |
| 911401626008 | BRP715 LED50 CW Solar Pro | 30 Ah | LiFePO4 | 12.8 V | - |
| 911401627008 | BRP715 LED50 CW Solar Pro 5 | 30 Ah | LiFePO4 | 12.8 V | - |
| 911401668308 | BRP715 LED50 WW Solar | 12 Ah | LiFePO4 | 12.8 V | - |
| 911401668808 | BRP715 LED50 WW Solar Pro | 30 Ah | LiFePO4 | 12.8 V | - |
| 911401625508 | BRP715 LED50 CW Solar | 12 Ah | Lithium Ferro Phosphate | 12.8 V | - |
| 911401668709 | BRP715 LED90 CW Solar hybrid 3Y | 12 Ah | LiFePO4 | 12.8 V | Excluded |
| 911401625808 | BRP715 LED120 CW Solar | 30 Ah | Lithium Ferro Phosphate | 12.8 V | - |
| 911401626408 | BRP715 LED180 CW Solar Pro | 48 Ah | LiFePO4 | 25.6 V | - |
| 911401626908 | BRP715 LED180 CW Solar 5 | 24 Ah | LiFePO4 | 25.6 V | - |
| 911401627408 | BRP715 LED180 CW Solar Pro 5 | 48 Ah | LiFePO4 | 25.6 V | - |
| 911401668708 | BRP715 LED180 WW Solar | 24 Ah | LiFePO4 | 25.6 V | - |
| 911401669208 | BRP715 LED180 WW Solar Pro | 48 Ah | LiFePO4 | 25.6 V | - |
| 911401626108 | BRP715 LED70 CW Solar Pro | 42 Ah | LiFePO4 | 12.8 V | - |
| 911401627108 | BRP715 LED70 CW Solar Pro 5 | 42 Ah | LiFePO4 | 12.8 V | - |
| 911401668408 | BRP715 LED70 WW Solar | 18 Ah | LiFePO4 | 12.8 V | - |
| 911401668908 | BRP715 LED70 WW Solar Pro | 42 Ah | LiFePO4 | 12.8 V | - |
| 911401625908 | BRP715 LED180 CW Solar | 24 Ah | Lithium Ferro Phosphate | 25.6 V | - |
| 911401669009 | BRP715 LED50 CW Solar Pro hybrid 3Y | 12 Ah | LiFePO4 | 12.8 V | Excluded |
| 911401668909 | BRP715 LED180 CW Solar hybrid 3Y | 15 Ah | LiFePO4 | 25.6 V | Excluded |
| 911401626308 | BRP715 LED120 CW Solar Pro | 66 Ah | LiFePO4 | 12.8 V | - |

GreenVision All-in-one Solar Street Light

| Order Code | Full Product Name | Battery ampere hour | Battery type | Battery voltage | Cable connection kit |
|--------------|---------------------------------|------------------------|----------------------------|--------------------|-------------------------|
| 911401627308 | BRP715 LED120 CW Solar Pro 5 | 66 Ah | LiFePO4 | 12.8 V | - |
| 911401668608 | BRP715 LED120 WW Solar | 30 Ah | LiFePO4 | 12.8 V | - |
| 911401669108 | BRP715 LED120 WW Solar Pro | 66 Ah | LiFePO4 | 12.8 V | - |
| 911401625608 | BRP715 LED70 CW Solar | 18 Ah | Lithium Ferro Phosphate | 12.8 V | - |

Operating and Electrical (2/2)

| Order Code | Full Product Name | Grid connection type | Panel peak wattage | Panel voltage | Order Code | Full Product Name | Grid connection type | Panel peak wattage | Panel voltage |
|--------------|---|-------------------------|-----------------------|------------------|--------------|--|-------------------------|-----------------------|------------------|
| 911401625708 | BRP715 LED90 CW Solar | Off grid | 50 W | 18 V | 911401627408 | BRP715 LED180 CW Solar Pro 5 | Off grid | 160 W | 36 V |
| 911401668809 | BRP715 LED120 CW Solar hybrid 3Y | Hybrid | 70 W | 19 V | 911401668708 | BRP715 LED180 WW Solar | Off grid | 80 W | 36 V |
| 911401626208 | BRP715 LED90 CW Solar Pro | Off grid | 90 W | 18 V | 911401669208 | BRP715 LED180 WW Solar Pro | Off grid | 160 W | 36 V |
| 911401627208 | BRP715 LED90 CW Solar Pro 5 | Off grid | 90 W | 18 V | 911401626108 | BRP715 LED70 CW Solar Pro | Off grid | 80 W | 18 V |
| 911401668508 | BRP715 LED90 WW Solar | Off grid | 50 W | 18 V | 911401627108 | BRP715 LED70 CW Solar Pro 5 | Off grid | 80 W | 18 V |
| 911401669008 | BRP715 LED90 WW Solar Pro | Off grid | 90 W | 18 V | 911401668408 | BRP715 LED70 WW Solar | Off grid | 40 W | 18 V |
| 911401669309 | BRP715 LED120 CW Solar Pro hybrid 3Y | Hybrid | 110 W | 17.5 V | 911401668908 | BRP715 LED70 WW Solar Pro | Off grid | 80 W | 18 V |
| 911401626008 | BRP715 LED50 CW Solar Pro | Off grid | 50 W | 18 V | 911401625908 | BRP715 LED180 CW Solar | Off grid | 80 W | 36 V |
| 911401627008 | BRP715 LED50 CW Solar Pro 5 | Off grid | 50 W | 18 V | 911401669009 | BRP715 LED50 CW Solar Pro hybrid 3Y | Hybrid | 55 W | 19 V |
| 911401668308 | BRP715 LED50 WW Solar | Off grid | 25 W | 18 V | 911401668909 | BRP715 LED180 CW Solar hybrid 3Y | Hybrid | 90 W | 36 V |
| 911401668808 | BRP715 LED50 WW Solar Pro | Off grid | 50 W | 18 V | 911401626308 | BRP715 LED120 CW Solar Pro | Off grid | 100 W | 18 V |
| 911401625508 | BRP715 LED50 CW Solar | Off grid | 25 W | 18 V | 911401627308 | BRP715 LED120 CW Solar Pro 5 | Off grid | 100 W | 18 V |
| 911401668709 | BRP715 LED90 CW Solar hybrid 3Y | Hybrid | 55 W | 19 V | 911401668608 | BRP715 LED120 WW Solar | Off grid | 60 W | 18 V |
| 911401625808 | BRP715 LED120 CW Solar | Off grid | 60 W | 18 V | 911401669108 | BRP715 LED120 WW Solar Pro | Off grid | 100 W | 18 V |
| 911401626408 | BRP715 LED180 CW Solar Pro | Off grid | 160 W | 36 V | 911401625608 | BRP715 LED70 CW Solar | Off grid | 40 W | 18 V |
| 911401626908 | BRP715 LED180 CW Solar 5 | Off grid | 80 W | 36 V | | | | | |

Controls and Dimming

| Order Code | Full Product Name | Solar dimming profile | Order Code | Full Product Name | Solar dimming profile |
|--------------|-----------------------|-------------------------------------|--------------|-------------------------------------|---|
| 911401625708 | BRP715 LED90 CW Solar | Dimming along with micriwave sensor | 911401668809 | BRP715 LED120 CW Solar hybrid 3Y | Dimming along with mircowave motion sensor |

GreenVision All-in-one Solar Street Light

| Order Code | Full Product Name | Solar dimming profile |
|--------------|--------------------------------------|--|
| 911401626208 | BRP715 LED90 CW Solar Pro | Dimming along with microwave motion sensor |
| 911401627208 | BRP715 LED90 CW Solar Pro 5 | Dimming along with microwave motion sensor |
| 911401668508 | BRP715 LED90 WW Solar | Dimming along with microwave motion sensor |
| 911401669008 | BRP715 LED90 WW Solar Pro | Dimming along with microwave motion sensor |
| 911401669309 | BRP715 LED120 CW Solar Pro hybrid 3Y | Dimming along with microwave motion sensor |
| 911401626008 | BRP715 LED50 CW Solar Pro | Dimming along with microwave motion sensor |
| 911401627008 | BRP715 LED50 CW Solar Pro 5 | Dimming along with microwave motion sensor |
| 911401668308 | BRP715 LED50 WW Solar | Dimming along with microwave motion sensor |
| 911401668808 | BRP715 LED50 WW Solar Pro | Dimming along with microwave motion sensor |
| 911401625508 | BRP715 LED50 CW Solar | Dimming along with microwave sensor |
| 911401668709 | BRP715 LED90 CW Solar hybrid 3Y | Dimming along with microwave motion sensor |
| 911401625808 | BRP715 LED120 CW Solar | Dimming along with microwave sensor |
| 911401626408 | BRP715 LED180 CW Solar Pro | Dimming along with microwave motion sensor |
| 911401626908 | BRP715 LED180 CW Solar 5 | Dimming along with microwave motion sensor |
| 911401627408 | BRP715 LED180 CW Solar Pro 5 | Dimming along with microwave motion sensor |

| Order Code | Full Product Name | Solar dimming profile |
|--------------|-------------------------------------|--|
| 911401668708 | BRP715 LED180 WW Solar | Dimming along with microwave motion sensor |
| 911401669208 | BRP715 LED180 WW Solar Pro | Dimming along with microwave motion sensor |
| 911401626108 | BRP715 LED70 CW Solar Pro | Dimming along with microwave motion sensor |
| 911401627108 | BRP715 LED70 CW Solar Pro 5 | Dimming along with microwave motion sensor |
| 911401668408 | BRP715 LED70 WW Solar | Dimming along with microwave motion sensor |
| 911401668908 | BRP715 LED70 WW Solar Pro | Dimming along with microwave motion sensor |
| 911401625908 | BRP715 LED180 CW Solar | Dimming along with microwave sensor |
| 911401669009 | BRP715 LED50 CW Solar Pro hybrid 3Y | Dimming along with microwave motion sensor |
| 911401668909 | BRP715 LED180 CW Solar hybrid 3Y | Dimming along with microwave motion sensor |
| 911401626308 | BRP715 LED120 CW Solar Pro | Dimming along with microwave motion sensor |
| 911401627308 | BRP715 LED120 CW Solar Pro 5 | Dimming along with microwave motion sensor |
| 911401668608 | BRP715 LED120 WW Solar | Dimming along with microwave motion sensor |
| 911401669108 | BRP715 LED120 WW Solar Pro | Dimming along with microwave motion sensor |
| 911401625608 | BRP715 LED70 CW Solar | Dimming along with microwave sensor |

Mechanical and Housing

| Order Code | Full Product Name | Overall length | Overall width |
|--------------|--------------------------------------|----------------|---------------|
| 911401625708 | BRP715 LED90 CW Solar | 910 mm | 366 mm |
| 911401668809 | BRP715 LED120 CW Solar hybrid 3Y | 1,080 mm | 366 mm |
| 911401626208 | BRP715 LED90 CW Solar Pro | 1,535 mm | 366 mm |
| 911401627208 | BRP715 LED90 CW Solar Pro 5 | 1,535 mm | 366 mm |
| 911401668508 | BRP715 LED90 WW Solar | 910 mm | 366 mm |
| 911401669008 | BRP715 LED90 WW Solar Pro | 1,535 mm | 366 mm |
| 911401669309 | BRP715 LED120 CW Solar Pro hybrid 3Y | 1,670 mm | 366 mm |
| 911401626008 | BRP715 LED50 CW Solar Pro | 910 mm | 366 mm |
| 911401627008 | BRP715 LED50 CW Solar Pro 5 | 910 mm | 366 mm |
| 911401668308 | BRP715 LED50 WW Solar | 560 mm | 355 mm |
| 911401668808 | BRP715 LED50 WW Solar Pro | 910 mm | 366 mm |
| 911401625508 | BRP715 LED50 CW Solar | 560 mm | 366 mm |
| 911401668709 | BRP715 LED90 CW Solar hybrid 3Y | 910 mm | 366 mm |
| 911401625808 | BRP715 LED120 CW Solar | 1,080 mm | 366 mm |
| 911401626408 | BRP715 LED180 CW Solar Pro | 1,812 mm | 523 mm |
| 911401626908 | BRP715 LED180 CW Solar 5 | 1,345 mm | 366 mm |

| Order Code | Full Product Name | Overall length | Overall width |
|--------------|-------------------------------------|----------------|---------------|
| 911401627408 | BRP715 LED180 CW Solar Pro 5 | 1,812 mm | 523 mm |
| 911401668708 | BRP715 LED180 WW Solar | 1,345 mm | 366 mm |
| 911401669208 | BRP715 LED180 WW Solar Pro | 1,812 mm | 523 mm |
| 911401626108 | BRP715 LED70 CW Solar Pro | 1,345 mm | 366 mm |
| 911401627108 | BRP715 LED70 CW Solar Pro 5 | 1,345 mm | 366 mm |
| 911401668408 | BRP715 LED70 WW Solar | 750 mm | 366 mm |
| 911401668908 | BRP715 LED70 WW Solar Pro | 1,345 mm | 366 mm |
| 911401625908 | BRP715 LED180 CW Solar | 1,345 mm | 366 mm |
| 911401669009 | BRP715 LED50 CW Solar Pro hybrid 3Y | 910 mm | 366 mm |
| 911401668909 | BRP715 LED180 CW Solar hybrid 3Y | 1,345 mm | 366 mm |
| 911401626308 | BRP715 LED120 CW Solar Pro | 1,670 mm | 366 mm |
| 911401627308 | BRP715 LED120 CW Solar Pro 5 | 1,670 mm | 366 mm |
| 911401668608 | BRP715 LED120 WW Solar | 1,080 mm | 366 mm |
| 911401669108 | BRP715 LED120 WW Solar Pro | 1,670 mm | 366 mm |
| 911401625608 | BRP715 LED70 CW Solar | 750 mm | 366 mm |

GreenVision All-in-one Solar Street Light

