



# High Performance lighting solutions for Safer Highways

## Skyline e-Way

Skyline e Way is a wide range of robust yet compact outdoor LED luminaires, designed with a focus on lighting wider roads with best of uniformities. Based on Signify's proven track record in road and urban LED lighting, the Skyline E Way luminaires benefit from numerous innovations to provide the ultimate experience for National Highways, utilities, contractors and citizens. Available in various optics and wattages, Skyline e Way provides a well dimensioned, efficient outdoor lighting solution ranging for various high road applications such as Highways and Expressways.

### Benefits

- LED lighting solution that stands out in terms of efficiency, versatility, and connectivity
- Stands out as best in class in circular economy. Robust mechanical structure enabling high IP and IK ratings
- High Lumen packages makes a differentiated offering for different applications
- An option of using 7-Pin NEMA socket enabling easy access to the digital era of lighting with advanced lighting features that plan, monitor and control outdoor lighting networks.

### Features

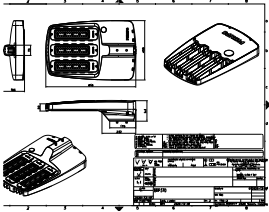
- LM6 Alloy, Robust pressure Die cast Aluminium housing.
- High Energy efficient solution (140 lm/W)
- High Impact resistance IK10
- Four different optics for different road widths

## Skyline e-Way

### Application

- Road and Street
- Security lighting

### Dimensional drawing



### Product details

Skyline eWay Street BRP370



| General Information                |  |
|------------------------------------|--|
| Driver included                    | Yes  |
| Light Technical                    |  |
| Luminaire light beam spread        | 130° x 88°   |
| Light source color                 | 757 cool white                                       |
| Correlated Color Temperature (Nom) | 5700 K   |
| Color rendering index (CRI)        | ≥70  |
| Luminous Efficacy (rated) (Nom)    | 138 lm/W   |
| Optic type outdoor                 | Wide street optic                                    |
| Controls and Dimming               |  |
| Dimmable                           | Yes  |
| Mechanical and Housing             |  |
| Optical cover type                 | UV stabilized<br>Polycarbonate<br>cover              |
| Housing Color                      | Dark gray  |
| Mech. impact protection code       | IK10   |
| Ingress protection code            | IP66   |
| Approval and Application           |  |
| Ambient temperature range          | +10 to +35 °C  |
| Flammability mark                  | For mounting on<br>normally<br>flammable<br>surfaces |

Light Technical

| Order Code   | Full Product Name                     | Luminous Flux |
|--------------|---------------------------------------|---------------|
| 919515814735 | BRP370 LED455 CW SLC S1 PSU GR        | 45,500 lm     |
| 919515814736 | BRP370 LED455 CW SLD S1 PSU GR        | 45,500 lm     |
| 919515814737 | BRP370 LED455 CW SLG S1 PSU GR        | 45,500 lm     |
| 919515814738 | BRP370 LED455 CW SLH S1 PSU GR        | 45,500 lm     |
| 919515814739 | BRP370 LED414 CW SLC S1 PSU GR        | 41,400 lm     |
| 919515814740 | BRP370 LED414 CW SLD S1 PSU GR        | 41,400 lm     |
| 919515814741 | BRP370 LED414 CW SLG S1 PSU GR        | 41,400 lm     |
| 919515814742 | BRP370 LED414 CW SLH S1 PSU GR        | 41,400 lm     |
| 919515814747 | BRP370 LED455 CW SLC S1 PSU GR SPD    | 45,500 lm     |
| 919515814748 | BRP370 LED455 CW SLD S1 PSU GR SPD    | 45,500 lm     |
| 919515814749 | BRP370 LED455 CW SLG S1 PSU GR SPD    | 45,500 lm     |
| 919515814750 | BRP370 LED455 CW SLH S1 PSU GR SPD    | 45,500 lm     |
| 919515814751 | BRP370 LED414 CW SLC S1 PSU GR SPD    | 41,400 lm     |
| 919515814752 | BRP370 LED414 CW SLD S1 PSU GR SPD    | 41,400 lm     |
| 919515814753 | BRP370 LED414 CW SLG S1 PSU GR SPD    | 41,400 lm     |
| 919515814754 | BRP370 LED414 CW SLH S1 PSU GR SPD    | 41,400 lm     |
| 919515814759 | BRP370 LED455 CW SLC S1 PSU GR SPD CM | 45,500 lm     |
| 919515814760 | BRP370 LED455 CW SLD S1 PSU GR SPD CM | 45,500 lm     |
| 919515814761 | BRP370 LED455 CW SLG S1 PSU GR SPD CM | 45,500 lm     |
| 919515814762 | BRP370 LED455 CW SLH S1 PSU GR SPD CM | 45,500 lm     |
| 919515814763 | BRP370 LED414 CW SLC S1 PSU GR SPD CM | 41,400 lm     |
| 919515814764 | BRP370 LED414 CW SLD S1 PSU GR SPD CM | 41,400 lm     |
| 919515814765 | BRP370 LED414 CW SLG S1 PSU GR SPD CM | 41,400 lm     |
| 919515814766 | BRP370 LED414 CW SLH S1 PSU GR SPD CM | 41,400 lm     |

Operating and Electrical

| Order Code   | Full Product Name                  | Power Consumption | Surge Protection (Common/Differential) |
|--------------|------------------------------------|-------------------|--|
| 919515814735 | BRP370 LED455 CW SLC S1 PSU GR     | 330 W             | Surge protection level until 4 kV      |
| 919515814736 | BRP370 LED455 CW SLD S1 PSU GR     | 330 W             | Surge protection level until 4 kV      |
| 919515814737 | BRP370 LED455 CW SLG S1 PSU GR     | 330 W             | Surge protection level until 4 kV      |
| 919515814738 | BRP370 LED455 CW SLH S1 PSU GR     | 330 W             | Surge protection level until 4 kV      |
| 919515814739 | BRP370 LED414 CW SLC S1 PSU GR     | 300 W             | Surge protection level until 4 kV      |
| 919515814740 | BRP370 LED414 CW SLD S1 PSU GR     | 300 W             | Surge protection level until 4 kV      |
| 919515814741 | BRP370 LED414 CW SLG S1 PSU GR     | 300 W             | Surge protection level until 4 kV      |
| 919515814742 | BRP370 LED414 CW SLH S1 PSU GR     | 300 W             | Surge protection level until 4 kV      |
| 919515814747 | BRP370 LED455 CW SLC S1 PSU GR SPD | 330 W             | Surge protection level until 10 kV     |
| 919515814748 | BRP370 LED455 CW SLD S1 PSU GR SPD | 330 W             | Surge protection level until 10 kV     |

| Order Code   | Full Product Name                     | Power Consumption | Surge Protection (Common/Differential) |
|--------------|---------------------------------------|-------------------|--|
| 919515814749 | BRP370 LED455 CW SLG S1 PSU GR SPD    | 330 W             | Surge protection level until 10 kV     |
| 919515814750 | BRP370 LED455 CW SLH S1 PSU GR SPD    | 330 W             | Surge protection level until 10 kV     |
| 919515814751 | BRP370 LED414 CW SLC S1 PSU GR SPD    | 300 W             | Surge protection level until 10 kV     |
| 919515814752 | BRP370 LED414 CW SLD S1 PSU GR SPD    | 300 W             | Surge protection level until 10 kV     |
| 919515814753 | BRP370 LED414 CW SLG S1 PSU GR SPD    | 300 W             | Surge protection level until 10 kV     |
| 919515814754 | BRP370 LED414 CW SLH S1 PSU GR SPD    | 300 W             | Surge protection level until 10 kV     |
| 919515814759 | BRP370 LED455 CW SLC S1 PSU GR SPD CM | 330 W             | Surge protection level until 10 kV     |
| 919515814760 | BRP370 LED455 CW SLD S1 PSU GR SPD CM | 330 W             | Surge protection level until 10 kV     |
| 919515814761 | BRP370 LED455 CW SLG S1 PSU GR SPD CM | 330 W             | Surge protection level until 10 kV     |
| 919515814762 | BRP370 LED455 CW SLH S1 PSU GR SPD CM | 330 W             | Surge protection level until 10 kV     |

| Order Code   | Full Product Name                        | Power Consumption | Surge Protection (Common/Differential) |
|--------------|--|-------------------|--|
| 919515814763 | BRP370 LED414 CW SLC<br>S1 PSU GR SPD CM | 300 W             | Surge protection level<br>until 10 kV  |
| 919515814764 | BRP370 LED414 CW SLD<br>S1 PSU GR SPD CM | 300 W             | Surge protection level<br>until 10 kV  |

| Order Code   | Full Product Name                        | Power Consumption | Surge Protection (Common/Differential) |
|--------------|--|-------------------|--|
| 919515814765 | BRP370 LED414 CW SLG<br>S1 PSU GR SPD CM | 300 W             | Surge protection level<br>until 10 kV  |
| 919515814766 | BRP370 LED414 CW SLH<br>S1 PSU GR SPD CM | 300 W             | Surge protection level<br>until 10 kV  |

