



An Energy efficient Well Glass for Industrial and commercial application

DuraLED Well Glass

DuraLED well glass is designed to replace traditional Well Glass up to 70W with only 50% of the load for similar illumination. It is a perfect LED solution for outdoor application and industry of harsh condition like power plant, metal, and non-hazardous area in chemical and petrochemical industry. Compared to conventional HID Well Glass, it improves reliability, comfort, while reducing energy and maintenance cost dramatically. DuraLED Well Glass comes with 2 different mounting, Wall bracket (2 types) & Eye-bolt and comes with 2 color temperature and 2 lumen outputs.

Benefits

- Suitable for use in harsh Industrial environment
- Outstanding energy efficiency leads to lowering ROI
- Comfortable diffused light
- High quality material and design leads to longer life class for luminaire

DuraLED Well Glass

Features

- Ingress Protection -IP65
- Impact Resistance IK08
- Inbuilt encapsulated Potted Driver
- Designed for operations under diverse environment from 0°C to 45°C
- Life class is 50000 hours (L70B50 @ Ta45°C)
- Pressure die-cast housing offers excellent corrosion-resistance and robustness
- System efficiency >120 lm/W
- High Voltage Cutoff @ 325 ± 15V with Auto Restart feature
- 440V Protection for 8 Hrs. (Phase to Phase)
- Internal Surge Protection 4KV
- CRI>80; comfortable lighting with low glare ratings

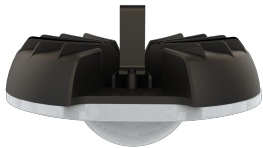
Application

- Manufacturing
- Harsh Industry Applications

Warnings and Safety

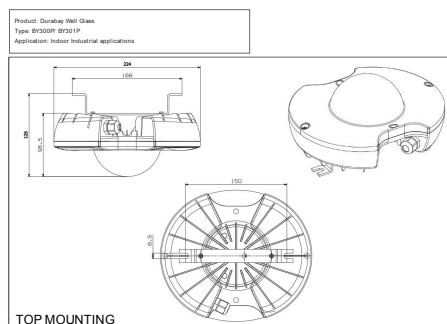
- Meant for use in Indoor Industrial environment only

Versions



BY300P LED

Dimensional drawing



DuraLED Well Glass

Product details



BY300P LED



BY300P LED



BY300P LED

General Information	
Driver included	Yes
Light Technical	
Beam angle of light source	120 degree(s)
Color rendering index (CRI)	>80
Luminous Efficacy (rated) (Nom)	120 lm/W
Optic type	Beam angle 120°
Operating and Electrical	
Protection class IEC	Safety class I
Input Voltage	120 to 277 V
Controls and Dimming	
Dimmable	No
Mechanical and Housing	
Optical cover type	Opal diffuser in polycarbonate cover
Housing Color	Gray
Mech. impact protection code	IK08
Ingress protection code	IP65
Approval and Application	
Ambient temperature range	0 to +45 °C
Flammability mark	For mounting on normally flammable surfaces
Initial Performance (IEC Compliant)	
Initial chromaticity	SDCM<5

Light Technical

Order Code	Full Product Name	Correlated Color Temperature (Nom)	Luminous Flux
919515812315	BY300P LED 25S WW PSU S1 PC	3000 K	2,700 lm
919515812317	BY300P LED 27S CW PSU S1 PC	6500 K	2,700 lm
919515812324	BY300P LED 35S WW PSU S1 PC	3000 K	3,700 lm
919515812325	BY300P LED 37S NW PSU S1 PC	4000 K	3,700 lm
919515812326	BY300P LED 37S CW PSU S1 PC	6500 K	3,700 lm
919515812330	BY300P LED 35S WW PSU S1 PC SPD	3000 K	3,700 lm
919515812332	BY300P LED 37S CW PSU S1 PC SPD	6500 K	3,700 lm

Operating and Electrical

DuraLED Well Glass

Order Code	Full Product Name	Power Consumption
919515812315	BY300P LED 25S WW PSU S1 PC	23 W
919515812317	BY300P LED 27S CW PSU S1 PC	23 W
919515812324	BY300P LED 35S WW PSU S1 PC	33 W
919515812325	BY300P LED 37S NW PSU S1 PC	33 W

Order Code	Full Product Name	Power Consumption
919515812326	BY300P LED 37S CW PSU S1 PC	33 W
919515812330	BY300P LED 35S WW PSU S1 PC SPD	33 W
919515812332	BY300P LED 37S CW PSU S1 PC SPD	33 W

