



The new generation of Mains T5 LEDtube lighting

MASTER LED tube Mains T5

The new Philips Master LEDtube Mains T5 brings simplicity to your lighting project. You don't need to pay attention to the driver technology anymore. Thanks to a unique design, Philips MASTER LEDtube Mains T5 installs in luminaires operating on mains power connection. So simple to operate! . Perfectly safe, reliable & easy to install Philips MASTER LEDtube Mains T5 is the ideal alternative to standard fluorescent tubes to maximize value over lifetime with high energy saving and lower maintenance costs.

Benefits

- Reduced operational cost thanks to lower energy consumption
- Lower maintenance cost thanks to longer lifetime than conventional lamps
- Fastest and easiest way to upgrade existing luminaires to LED technology; completely safe product and installation process

Features

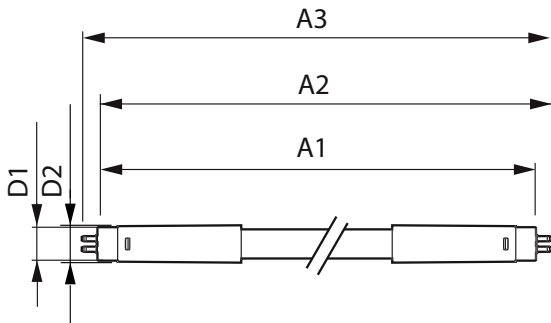
- Replacement of existing T5 lamps: operates with mains power connection
- Energy savings compared with fluorescent tubes
- Long lifetime
- Enable implementation of HACCP, supported by product level NSF certificate
- No mercury

Application

- Offices, shops, classrooms
- Industrial facilities and warehouses

MASTER LED tube Mains T5

Dimensional drawing



Product	D1	D2	A1	A2	A3
MAS LEDtube 1200mm HE 16.5W 865 T5	15.8 mm	19 mm	1,149 mm	1,156.1 mm	1,163.2 mm
MAS LEDtube 1200mm HO 26W 830 T5	15.5 mm	17.1 mm	1,149 mm	1,156 mm	1,163 mm
MAS LEDtube 1200mm HO 26W 840 T5	15.5 mm	17.1 mm	1,149 mm	1,156 mm	1,163 mm
MAS LEDtube 1200mm HO 26W 865 T5	15.5 mm	17.1 mm	1,149 mm	1,156 mm	1,163 mm
MAS LEDtube 1500mm HO 26W 830 T5	15.5 mm	17.1 mm	1,449 mm	1,456 mm	1,463 mm
MAS LEDtube 1500mm HO 26W 840 T5	15.5 mm	17.1 mm	1,449 mm	1,456 mm	1,463 mm
MAS LEDtube 1500mm HO 26W 865 T5	15.5 mm	17.1 mm	1,449 mm	1,456 mm	1,463 mm
MAS LEDtube 600mm HE 8W 865 T5	15.8 mm	19 mm	549 mm	556.1 mm	563.2 mm

General Information	
Cap-Base	G5
Switching Cycle	200,000
Light Technical	
Beam Angle (Nom)	200 degree(s)
Color rendering index (CRI)	80
LLMF At End Of Nominal Lifetime (Nom)	70 %
Operating and Electrical	
Input Frequency	50 to 60 Hz
Line Frequency	50 to 60 Hz
Starting Time (Nom)	0.5 s
Controls and Dimming	
Dimmable	No
Mechanical and Housing	
Bulb Finish	Frosted
Bulb Shape	T5

General Information

Order Code	Full Product Name	Nominal lifetime
929001908502	MAS LEDtube 1200mm HO 26W 830 T5	60,000 hour(s)
929001908602	MAS LEDtube 1200mm HO 26W 840 T5	60,000 hour(s)
929001908702	MAS LEDtube 1200mm HO 26W 865 T5	60,000 hour(s)
929001908802	MAS LEDtube 1500mm HO 26W 830 T5	60,000 hour(s)
929001908902	MAS LEDtube 1500mm HO 26W 840 T5	60,000 hour(s)
929001909002	MAS LEDtube 1500mm HO 26W 865 T5	60,000 hour(s)
929002420808	MAS LEDtube 600mm HE 8W 865 T5	50,000 hour(s)
929002421108	MAS LEDtube 1200mm HE 16.5W 865 T5	50,000 hour(s)

Light Technical

Order Code	Full Product Name	Correlated Color		Luminous Flux
		Temperature (Nom)	Color Code	
929001908502	MAS LEDtube 1200mm HO 26W 830 T5	3000 K	830	3,600 lm
929001908602	MAS LEDtube 1200mm HO 26W 840 T5	4000 K	840	3,900 lm

Order Code	Full Product Name	Correlated Color		Luminous Flux
		Temperature (Nom)	Color Code	
929001908702	MAS LEDtube 1200mm HO 26W 865 T5	6500 K	865	3,900 lm
929001908802	MAS LEDtube 1500mm HO 26W 830 T5	3000 K	830	3,600 lm

MASTER LED tube Mains T5

Order Code	Full Product Name	Correlated Color		Luminous Flux
		Temperature (Nom)	Color Code	
929001908902	MAS LEDtube 1500mm HO 26W 840 T5	4000 K	840	3,900 lm
929001909002	MAS LEDtube 1500mm HO 26W 865 T5	6500 K	865	3,900 lm

Order Code	Full Product Name	Correlated Color		Luminous Flux
		Temperature (Nom)	Color Code	
929002420808	MAS LEDtube 600mm HE 8W 865 T5	6500 K	865	1,050 lm
929002421108	MAS LEDtube 1200mm HE 16.5W 865 T5	6500 K	865	2,500 lm

Operating and Electrical

Order Code	Full Product Name	Power Consumption
929001908502	MAS LEDtube 1200mm HO 26W 830 T5	26 W
929001908602	MAS LEDtube 1200mm HO 26W 840 T5	26 W
929001908702	MAS LEDtube 1200mm HO 26W 865 T5	26 W
929001908802	MAS LEDtube 1500mm HO 26W 830 T5	26 W

Order Code	Full Product Name	Power Consumption
929001908902	MAS LEDtube 1500mm HO 26W 840 T5	26 W
929001909002	MAS LEDtube 1500mm HO 26W 865 T5	26 W
929002420808	MAS LEDtube 600mm HE 8W 865 T5	8 W
929002421108	MAS LEDtube 1200mm HE 16.5W 865 T5	16.5 W

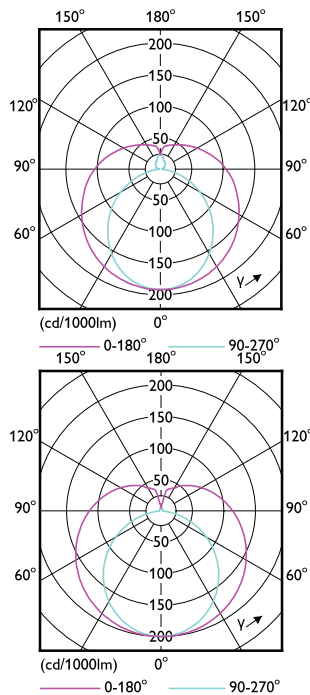
Temperature

Order Code	Full Product Name	T-Case Maximum (Nom)
929001908502	MAS LEDtube 1200mm HO 26W 830 T5	65 °C
929001908602	MAS LEDtube 1200mm HO 26W 840 T5	65 °C
929001908702	MAS LEDtube 1200mm HO 26W 865 T5	65 °C
929001908802	MAS LEDtube 1500mm HO 26W 830 T5	65 °C

Order Code	Full Product Name	T-Case Maximum (Nom)
929001908902	MAS LEDtube 1500mm HO 26W 840 T5	65 °C
929001909002	MAS LEDtube 1500mm HO 26W 865 T5	65 °C
929002420808	MAS LEDtube 600mm HE 8W 865 T5	60 °C
929002421108	MAS LEDtube 1200mm HE 16.5W 865 T5	70 °C

Approval and Application

Order Code	Full Product Name	Ambient temperature range	Energy
			Consumption kWh/1000 h
929001908502	MAS LEDtube 1200mm HO 26W 830 T5	-20 to +45 °C	26 kWh
929001908602	MAS LEDtube 1200mm HO 26W 840 T5	-20 to +45 °C	26 kWh
929001908702	MAS LEDtube 1200mm HO 26W 865 T5	-20 to +45 °C	26 kWh
929001908802	MAS LEDtube 1500mm HO 26W 830 T5	-20 to +45 °C	26 kWh
929001908902	MAS LEDtube 1500mm HO 26W 840 T5	-20 to +45 °C	26 kWh
929001909002	MAS LEDtube 1500mm HO 26W 865 T5	-20 to +45 °C	26 kWh
929002420808	MAS LEDtube 600mm HE 8W 865 T5	-20 °C to 45 °C	8 kWh
929002421108	MAS LEDtube 1200mm HE 16.5W 865 T5	-20 °C to 45 °C	17 kWh



MASTER LED tube Mains T5

