



# The new generation of Mains T5 LEDtube lighting

## MASTER LED tube Mains T5

The new Philips Master LEDtube Mains T5 brings simplicity to your lighting project. You don't need to pay attention to the driver technology anymore. Thanks to a unique design, Philips MASTER LEDtube Mains T5 installs in luminaires operating on mains power connection. So simple to operate! . Perfectly safe, reliable & easy to install, the Philips MASTER LEDtube Mains T5 is the ideal alternative to standard fluorescent tubes to maximise value over lifetime with high energy savings and lower maintenance costs.

### Benefits

- Reduced operational cost thanks to lower energy consumption
- Lower maintenance cost thanks to a longer lifetime than conventional lamps
- The fastest and easiest way to upgrade existing luminaires to LED technology; completely safe product and installation process

### Features

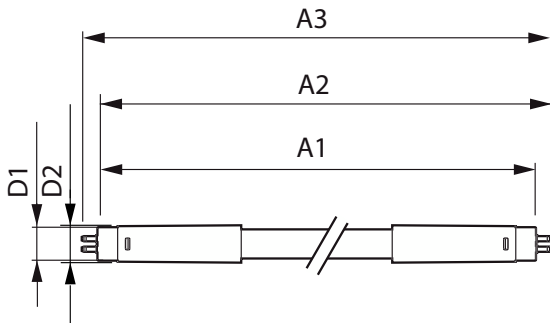
- Replacement of existing T5 lamps: operates with mains power connection
- Energy savings compared with fluorescent tubes
- Long lifetime
- Enable implementation of HACCP, supported by product level NSF certificate
- No mercury

### Application

- Offices, shops, classrooms
- Industrial facilities and warehouses

# MASTER LED tube Mains T5

## Dimensional drawing



| Product                               | D1      | D2      | A1       | A2         | A3         |
|---------------------------------------|---------|---------|----------|------------|------------|
| MAS LEDtube 1200mm HE 16.5W 830 T5    | 15.8 mm | 19 mm   | 1,149 mm | 1,156.1 mm | 1,163.2 mm |
| MAS LEDtube 1200mm HE 16.5W 830 T5 EU | 15.7 mm | 19 mm   | 1,149 mm | 1,156.1 mm | 1,163.2 mm |
| MAS LEDtube 1200mm HE 16.5W 840 T5    | 15.8 mm | 19 mm   | 1,149 mm | 1,156.1 mm | 1,163.2 mm |
| MAS LEDtube 1200mm HE 16.5W 840 T5 EU | 15.7 mm | 19 mm   | 1,149 mm | 1,156.1 mm | 1,163.2 mm |
| MAS LEDtube 1200mm HE 16.5W 840 T5 HK | 15.8 mm | 19 mm   | 1,149 mm | 1,156.1 mm | 1,163.2 mm |
| MAS LEDtube 1200mm HE 16.5W 865 T5    | 15.8 mm | 19 mm   | 1,149 mm | 1,156.1 mm | 1,163.2 mm |
| MAS LEDtube 1200mm HE 16.5W 865 T5 EU | 15.7 mm | 19 mm   | 1,149 mm | 1,156.1 mm | 1,163.2 mm |
| MAS LEDtube 1200mm HE 16.5W 865 T5 HK | 15.8 mm | 19 mm   | 1,149 mm | 1,156.1 mm | 1,163.2 mm |
| MAS LEDtube 1200mm HO 26W 830 T5      | 15.5 mm | 17.1 mm | 1,149 mm | 1,156 mm   | 1,163 mm   |
| MAS LEDtube 1200mm HO 26W 830 T5 HK   | 15.5 mm | 17.1 mm | 1,149 mm | 1,156 mm   | 1,163 mm   |
| MAS LEDtube 1200mm HO 26W 840 T5      | 15.5 mm | 17.1 mm | 1,149 mm | 1,156 mm   | 1,163 mm   |
| MAS LEDtube 1200mm HO 26W 840 T5 HK   | 15.5 mm | 17.1 mm | 1,149 mm | 1,156 mm   | 1,163 mm   |
| MAS LEDtube 1200mm HO 26W 865 T5      | 15.5 mm | 17.1 mm | 1,149 mm | 1,156 mm   | 1,163 mm   |
| MAS LEDtube 1500mm HE 20W 830 T5 EU   | 15.7 mm | 19 mm   | 1,449 mm | 1,456.1 mm | 1,463.2 mm |
| MAS LEDtube 1500mm HE 20W 840 T5 EU   | 15.7 mm | 19 mm   | 1,449 mm | 1,456.1 mm | 1,463.2 mm |
| MAS LEDtube 1500mm HE 20W 865 T5 EU   | 15.7 mm | 19 mm   | 1,449 mm | 1,456.1 mm | 1,463.2 mm |
| MAS LEDtube 1500mm HO 26W 830 T5      | 15.5 mm | 17.1 mm | 1,449 mm | 1,456 mm   | 1,463 mm   |
| MAS LEDtube 1500mm HO 26W 840 T5      | 15.5 mm | 17.1 mm | 1,449 mm | 1,456 mm   | 1,463 mm   |
| MAS LEDtube 1500mm HO 26W 865 T5      | 15.5 mm | 17.1 mm | 1,449 mm | 1,456 mm   | 1,463 mm   |
| MAS LEDtube 600mm HE 7W 830 T5 EU     | 15.7 mm | 19 mm   | 549 mm   | 556.1 mm   | 563.2 mm   |
| MAS LEDtube 600mm HE 7W 840 T5 EU     | 15.7 mm | 19 mm   | 549 mm   | 556.1 mm   | 563.2 mm   |
| MAS LEDtube 600mm HE 7W 865 T5 EU     | 15.7 mm | 19 mm   | 549 mm   | 556.1 mm   | 563.2 mm   |
| MAS LEDtube 600mm HE 8W 830 T5        | 15.8 mm | 19 mm   | 549 mm   | 556.1 mm   | 563.2 mm   |
| MAS LEDtube 600mm HE 8W 840 T5        | 15.8 mm | 19 mm   | 549 mm   | 556.1 mm   | 563.2 mm   |
| MAS LEDtube 600mm HE 8W 840 T5 HK     | 15.8 mm | 19 mm   | 549 mm   | 556.1 mm   | 563.2 mm   |

# MASTER LED tube Mains T5

## Dimensional drawing

| Product                                 | D1      | D2    | A1     | A2       | A3       |
|---|---------|-------|--------|----------|----------|
| MAS LEDtube 600mm HE 8W<br>865 T5       | 15.8 mm | 19 mm | 549 mm | 556.1 mm | 563.2 mm |
| MAS LEDtube 600mm HE 8W<br>865 T5 HK    | 15.8 mm | 19 mm | 549 mm | 556.1 mm | 563.2 mm |
| MAS LEDtube 600mm HO 10.5W<br>830 T5    |         | 19 mm | 549 mm | 556.1 mm | 563.2 mm |
| MAS LEDtube 600mm HO 10.5W<br>840 T5    |         | 19 mm | 549 mm | 556.1 mm | 563.2 mm |
| MAS LEDtube 600mm HO 10.5W<br>865 T5    |         | 19 mm | 549 mm | 556.1 mm | 563.2 mm |
| MAS LEDtube 900mm HE 11.5W<br>830 T5 EU | 15.7 mm | 19 mm | 849 mm | 856.1 mm | 863.2 mm |
| MAS LEDtube 900mm HE 11.5W<br>840 T5 EU | 15.7 mm | 19 mm | 849 mm | 856.1 mm | 863.2 mm |
| MAS LEDtube 900mm HE 11.5W<br>865 T5 EU | 15.7 mm | 19 mm | 849 mm | 856.1 mm | 863.2 mm |
| MAS LEDtube 900mm HO 18.5W<br>830 T5    |         | 19 mm | 849 mm | 856.1 mm | 863.2 mm |
| MAS LEDtube 900mm HO 18.5W<br>840 T5    |         | 19 mm | 849 mm | 856.1 mm | 863.2 mm |
| MAS LEDtube 900mm HO 18.5W<br>865 T5    |         | 19 mm | 849 mm | 856.1 mm | 863.2 mm |

| General Information                   |               |
|---------------------------------------|---------------|
| Cap-Base                              | G5            |
| Switching Cycle                       | 200,000       |
| Light Technical                       |               |
| Beam Angle (Nom)                      | 200 degree(s) |
| Color rendering index (CRI)           | 80            |
| LLMF At End Of Nominal Lifetime (Nom) | 70 %          |
| Operating and Electrical              |               |
| Input Frequency                       | 50 to 60 Hz   |
| Starting Time (Nom)                   | 0.5 s         |
| Controls and Dimming                  |               |
| Dimmable                              | No            |
| Mechanical and Housing                |               |
| Bulb Finish                           | Frosted       |
| Bulb Shape                            | T5            |

## General Information

| Order Code   | Full Product Name                     | Nominal lifetime |
|--------------|---------------------------------------|------------------|
| 929001908502 | MAS LEDtube 1200mm HO 26W 830 T5      | 60,000 hour(s)   |
| 929001908508 | MAS LEDtube 1200mm HO 26W 830 T5 HK   | 50,000 hour(s)   |
| 929001908602 | MAS LEDtube 1200mm HO 26W 840 T5      | 60,000 hour(s)   |
| 929001908608 | MAS LEDtube 1200mm HO 26W 840 T5 HK   | 50,000 hour(s)   |
| 929001908702 | MAS LEDtube 1200mm HO 26W 865 T5      | 60,000 hour(s)   |
| 929001908802 | MAS LEDtube 1500mm HO 26W 830 T5      | 60,000 hour(s)   |
| 929001908902 | MAS LEDtube 1500mm HO 26W 840 T5      | 60,000 hour(s)   |
| 929001909002 | MAS LEDtube 1500mm HO 26W 865 T5      | 60,000 hour(s)   |
| 929002420608 | MAS LEDtube 600mm HE 8W 830 T5        | 50,000 hour(s)   |
| 929002420708 | MAS LEDtube 600mm HE 8W 840 T5        | 50,000 hour(s)   |
| 929002420768 | MAS LEDtube 600mm HE 8W 840 T5 HK     | 50,000 hour(s)   |
| 929002420808 | MAS LEDtube 600mm HE 8W 865 T5        | 50,000 hour(s)   |
| 929002420868 | MAS LEDtube 600mm HE 8W 865 T5 HK     | 50,000 hour(s)   |
| 929002420908 | MAS LEDtube 1200mm HE 16.5W 830 T5    | 50,000 hour(s)   |
| 929002421008 | MAS LEDtube 1200mm HE 16.5W 840 T5    | 50,000 hour(s)   |
| 929002421068 | MAS LEDtube 1200mm HE 16.5W 840 T5 HK | 50,000 hour(s)   |
| 929002421108 | MAS LEDtube 1200mm HE 16.5W 865 T5    | 50,000 hour(s)   |
| 929002421168 | MAS LEDtube 1200mm HE 16.5W 865 T5 HK | 50,000 hour(s)   |
| 929002421202 | MAS LEDtube 1500mm HE 20W 830 T5 EU   | 60,000 hour(s)   |
| 929002421302 | MAS LEDtube 1500mm HE 20W 840 T5 EU   | 60,000 hour(s)   |
| 929002421402 | MAS LEDtube 1500mm HE 20W 865 T5 EU   | 60,000 hour(s)   |
| 929003044402 | MAS LEDtube 1200mm HE 16.5W 830 T5 EU | 60,000 hour(s)   |
| 929003044502 | MAS LEDtube 1200mm HE 16.5W 840 T5 EU | 60,000 hour(s)   |

## MASTER LED tube Mains T5

| Order Code   | Full Product Name                     | Nominal lifetime |
|--------------|---------------------------------------|------------------|
| 929003044602 | MAS LEDtube 1200mm HE 16.5W 865 T5 EU | 60,000 hour(s)   |
| 929003734002 | MAS LEDtube 900mm HE 11.5W 830 T5 EU  | 60,000 hour(s)   |
| 929003734102 | MAS LEDtube 900mm HE 11.5W 840 T5 EU  | 60,000 hour(s)   |
| 929003734202 | MAS LEDtube 900mm HE 11.5W 865 T5 EU  | 60,000 hour(s)   |
| 929003734302 | MAS LEDtube 600mm HO 10.5W 830 T5     | 60,000 hour(s)   |
| 929003734402 | MAS LEDtube 600mm HO 10.5W 840 T5     | 60,000 hour(s)   |
| 929003734502 | MAS LEDtube 600mm HO 10.5W 865 T5     | 60,000 hour(s)   |
| 929003734602 | MAS LEDtube 900mm HO 18.5W 830 T5     | 60,000 hour(s)   |
| 929003734702 | MAS LEDtube 900mm HO 18.5W 840 T5     | 60,000 hour(s)   |
| 929003734802 | MAS LEDtube 900mm HO 18.5W 865 T5     | 60,000 hour(s)   |
| 929003795402 | MAS LEDtube 600mm HE 7W 830 T5 EU     | 60,000 hour(s)   |
| 929003795502 | MAS LEDtube 600mm HE 7W 840 T5 EU     | 60,000 hour(s)   |
| 929003795602 | MAS LEDtube 600mm HE 7W 865 T5 EU     | 60,000 hour(s)   |

### Light Technical

| Order Code   | Full Product Name                     | Correlated Color  |            |               |
|--------------|---------------------------------------|-------------------|------------|---------------|
|              |                                       | Temperature (Nom) | Color Code | Luminous Flux |
| 929001908502 | MAS LEDtube 1200mm HO 26W 830 T5      | 3000 K            | 830        | 3,600 lm      |
| 929001908508 | MAS LEDtube 1200mm HO 26W 830 T5 HK   | 3000 K            | 830        | 3,600 lm      |
| 929001908602 | MAS LEDtube 1200mm HO 26W 840 T5      | 4000 K            | 840        | 3,900 lm      |
| 929001908608 | MAS LEDtube 1200mm HO 26W 840 T5 HK   | 4000 K            | 840        | 3,900 lm      |
| 929001908702 | MAS LEDtube 1200mm HO 26W 865 T5      | 6500 K            | 865        | 3,900 lm      |
| 929001908802 | MAS LEDtube 1500mm HO 26W 830 T5      | 3000 K            | 830        | 3,600 lm      |
| 929001908902 | MAS LEDtube 1500mm HO 26W 840 T5      | 4000 K            | 840        | 3,900 lm      |
| 929001909002 | MAS LEDtube 1500mm HO 26W 865 T5      | 6500 K            | 865        | 3,900 lm      |
| 929002420608 | MAS LEDtube 600mm HE 8W 830 T5        | 3000 K            | 830        | 1,000 lm      |
| 929002420708 | MAS LEDtube 600mm HE 8W 840 T5        | 4000 K            | 840        | 1,050 lm      |
| 929002420768 | MAS LEDtube 600mm HE 8W 840 T5 HK     | 4000 K            | 840        | 1,050 lm      |
| 929002420808 | MAS LEDtube 600mm HE 8W 865 T5        | 6500 K            | 865        | 1,050 lm      |
| 929002420868 | MAS LEDtube 600mm HE 8W 865 T5 HK     | 6500 K            | 865        | 1,050 lm      |
| 929002420908 | MAS LEDtube 1200mm HE 16.5W 830 T5    | 3000 K            | 830        | 2,300 lm      |
| 929002421008 | MAS LEDtube 1200mm HE 16.5W 840 T5    | 4000 K            | 840        | 2,500 lm      |
| 929002421068 | MAS LEDtube 1200mm HE 16.5W 840 T5 HK | 4000 K            | 840        | 2,500 lm      |

| Order Code   | Full Product Name                     | Correlated Color  |            |               |
|--------------|---------------------------------------|-------------------|------------|---------------|
|              |                                       | Temperature (Nom) | Color Code | Luminous Flux |
| 929002421108 | MAS LEDtube 1200mm HE 16.5W 865 T5    | 6500 K            | 865        | 2,500 lm      |
| 929002421168 | MAS LEDtube 1200mm HE 16.5W 865 T5 HK | 6500 K            | 865        | 2,500 lm      |
| 929002421202 | MAS LEDtube 1500mm HE 20W 830 T5 EU   | 3000 K            | 830        | 2,800 lm      |
| 929002421302 | MAS LEDtube 1500mm HE 20W 840 T5 EU   | 4000 K            | 840        | 3,000 lm      |
| 929002421402 | MAS LEDtube 1500mm HE 20W 865 T5 EU   | 6500 K            | 865        | 3,000 lm      |
| 929003044402 | MAS LEDtube 1200mm HE 16.5W 830 T5 EU | 3000 K            | 830        | 2,300 lm      |
| 929003044502 | MAS LEDtube 1200mm HE 16.5W 840 T5 EU | 4000 K            | 840        | 2,500 lm      |
| 929003044602 | MAS LEDtube 1200mm HE 16.5W 865 T5 EU | 6500 K            | 865        | 2,500 lm      |
| 929003734002 | MAS LEDtube 900mm HE 11.5W 830 T5 EU  | 3000 K            | 830        | 1,600 lm      |
| 929003734102 | MAS LEDtube 900mm HE 11.5W 840 T5 EU  | 4000 K            | 840        | 1,700 lm      |
| 929003734202 | MAS LEDtube 900mm HE 11.5W 865 T5 EU  | 6500 K            | 865        | 1,700 lm      |
| 929003734302 | MAS LEDtube 600mm HO 10.5W 830 T5     | 3000 K            | 830        | 1,500 lm      |
| 929003734402 | MAS LEDtube 600mm HO 10.5W 840 T5     | 4000 K            | 840        | 1,600 lm      |
| 929003734502 | MAS LEDtube 600mm HO 10.5W 865 T5     | 6500 K            | 865        | 1,600 lm      |
| 929003734602 | MAS LEDtube 900mm HO 18.5W 830 T5     | 3000 K            | 830        | 2,600 lm      |
| 929003734702 | MAS LEDtube 900mm HO 18.5W 840 T5     | 4000 K            | 840        | 2,800 lm      |

## MASTER LED tube Mains T5

| Order Code   | Full Product Name                 | Correlated Color  |            |               |
|--------------|-----------------------------------|-------------------|------------|---------------|
|              |                                   | Temperature (Nom) | Color Code | Luminous Flux |
| 929003734802 | MAS LEDtube 900mm HO 18.5W 865 T5 | 6500 K            | 865        | 2,800 lm      |
| 929003795402 | MAS LEDtube 600mm HE 7W 830 T5 EU | 3000 K            | 830        | 1,000 lm      |

| Order Code   | Full Product Name                 | Correlated Color  |            |               |
|--------------|-----------------------------------|-------------------|------------|---------------|
|              |                                   | Temperature (Nom) | Color Code | Luminous Flux |
| 929003795502 | MAS LEDtube 600mm HE 7W 840 T5 EU | 4000 K            | 840        | 1,050 lm      |
| 929003795602 | MAS LEDtube 600mm HE 7W 865 T5 EU | 6500 K            | 865        | 1,050 lm      |

### Operating and Electrical

| Order Code   | Full Product Name                   | Line        | Power       | Wattage    |
|--------------|-------------------------------------|-------------|-------------|------------|
|              |                                     | Frequency   | Consumption | Equivalent |
| 929001908502 | MAS LEDtube 1200mm HO 26W 830 T5    | 50 to 60 Hz | 26 W        | -          |
| 929001908508 | MAS LEDtube 1200mm HO 26W 830 T5 HK | -           | 26 W        | 54 W       |
| 929001908602 | MAS LEDtube 1200mm HO 26W 840 T5    | 50 to 60 Hz | 26 W        | -          |
| 929001908608 | MAS LEDtube 1200mm HO 26W 840 T5 HK | -           | 26 W        | 54 W       |
| 929001908702 | MAS LEDtube 1200mm HO 26W 865 T5    | 50 to 60 Hz | 26 W        | -          |
| 929001908802 | MAS LEDtube 1500mm HO 26W 830 T5    | 50 to 60 Hz | 26 W        | -          |
| 929001908902 | MAS LEDtube 1500mm HO 26W 840 T5    | 50 to 60 Hz | 26 W        | -          |
| 929001909002 | MAS LEDtube 1500mm HO 26W 865 T5    | 50 to 60 Hz | 26 W        | -          |
| 929002420608 | MAS LEDtube 600mm HE 8W 830 T5      | 50 to 60 Hz | 8 W         | -          |
| 929002420708 | MAS LEDtube 600mm HE 8W 840 T5      | 50 to 60 Hz | 8 W         | -          |
| 929002420768 | MAS LEDtube 600mm HE 8W 840 T5 HK   | -           | 8 W         | 14 W       |
| 929002420808 | MAS LEDtube 600mm HE 8W 865 T5      | 50 to 60 Hz | 8 W         | -          |
| 929002420868 | MAS LEDtube 600mm HE 8W 865 T5 HK   | -           | 8 W         | 14 W       |

| Order Code   | Full Product Name                     | Line        | Power       | Wattage    |
|--------------|---------------------------------------|-------------|-------------|------------|
|              |                                       | Frequency   | Consumption | Equivalent |
| 929002420908 | MAS LEDtube 1200mm HE 16.5W 830 T5    | 50 to 60 Hz | 16.5 W      | -          |
| 929002421008 | MAS LEDtube 1200mm HE 16.5W 840 T5    | 50 to 60 Hz | 16.5 W      | -          |
| 929002421068 | MAS LEDtube 1200mm HE 16.5W 840 T5 HK | -           | 16.5 W      | 28 W       |
| 929002421108 | MAS LEDtube 1200mm HE 16.5W 865 T5    | 50 to 60 Hz | 16.5 W      | -          |
| 929002421168 | MAS LEDtube 1200mm HE 16.5W 865 T5 HK | -           | 16.5 W      | 28 W       |
| 929002421202 | MAS LEDtube 1500mm HE 20W 830 T5 EU   | 50 to 60 Hz | 20 W        | -          |
| 929002421302 | MAS LEDtube 1500mm HE 20W 840 T5 EU   | 50 to 60 Hz | 20 W        | -          |
| 929002421402 | MAS LEDtube 1500mm HE 20W 865 T5 EU   | 50 to 60 Hz | 20 W        | -          |
| 929003044402 | MAS LEDtube 1200mm HE 16.5W 830 T5 EU | 50 to 60 Hz | 16.5 W      | -          |
| 929003044502 | MAS LEDtube 1200mm HE 16.5W 840 T5 EU | 50 to 60 Hz | 16.5 W      | -          |
| 929003044602 | MAS LEDtube 1200mm HE 16.5W 865 T5 EU | 50 to 60 Hz | 16.5 W      | -          |
| 929003734002 | MAS LEDtube 900mm HE 11.5W 830 T5 EU  | 50 to 60 Hz | 11.5 W      | -          |
| 929003734102 | MAS LEDtube 900mm HE 11.5W 840 T5 EU  | 50 to 60 Hz | 11.5 W      | -          |

## MASTER LED tube Mains T5

| Order Code   | Full Product Name                          | Line        | Power       | Wattage    |
|--------------|--|-------------|-------------|------------|
|              |  | Frequency   | Consumption | Equivalent |
| 929003734202 | MAS LEDtube<br>900mm HE 11.5W<br>865 T5 EU | 50 to 60 Hz | 11.5 W      | -          |
| 929003734302 | MAS LEDtube<br>600mm HO 10.5W<br>830 T5    | -           | 10.5 W      | -          |
| 929003734402 | MAS LEDtube<br>600mm HO 10.5W<br>840 T5    | -           | 10.5 W      | -          |
| 929003734502 | MAS LEDtube<br>600mm HO 10.5W<br>865 T5    | -           | 10.5 W      | -          |
| 929003734602 | MAS LEDtube<br>900mm HO 18.5W<br>830 T5    | -           | 18.5 W      | -          |

| Order Code   | Full Product Name                       | Line      | Power       | Wattage    |
|--------------|---|-----------|-------------|------------|
|              |   | Frequency | Consumption | Equivalent |
| 929003734702 | MAS LEDtube<br>900mm HO 18.5W<br>840 T5 | -         | 18.5 W      | -          |
| 929003734802 | MAS LEDtube<br>900mm HO 18.5W<br>865 T5 | -         | 18.5 W      | -          |
| 929003795402 | MAS LEDtube<br>600mm HE 7W 830<br>T5 EU | -         | 7 W         | -          |
| 929003795502 | MAS LEDtube<br>600mm HE 7W 840<br>T5 EU | -         | 7 W         | -          |
| 929003795602 | MAS LEDtube<br>600mm HE 7W 865<br>T5 EU | -         | 7 W         | -          |

### Temperature

| Order Code   | Full Product Name                     | T-Case Maximum (Nom) |
|--------------|---------------------------------------|----------------------|
| 929001908502 | MAS LEDtube 1200mm HO 26W 830 T5      | 65 °C                |
| 929001908508 | MAS LEDtube 1200mm HO 26W 830 T5 HK   | 65 °C                |
| 929001908602 | MAS LEDtube 1200mm HO 26W 840 T5      | 65 °C                |
| 929001908608 | MAS LEDtube 1200mm HO 26W 840 T5 HK   | 65 °C                |
| 929001908702 | MAS LEDtube 1200mm HO 26W 865 T5      | 65 °C                |
| 929001908802 | MAS LEDtube 1500mm HO 26W 830 T5      | 65 °C                |
| 929001908902 | MAS LEDtube 1500mm HO 26W 840 T5      | 65 °C                |
| 929001909002 | MAS LEDtube 1500mm HO 26W 865 T5      | 65 °C                |
| 929002420608 | MAS LEDtube 600mm HE 8W 830 T5        | 60 °C                |
| 929002420708 | MAS LEDtube 600mm HE 8W 840 T5        | 60 °C                |
| 929002420768 | MAS LEDtube 600mm HE 8W 840 T5 HK     | 60 °C                |
| 929002420808 | MAS LEDtube 600mm HE 8W 865 T5        | 60 °C                |
| 929002420868 | MAS LEDtube 600mm HE 8W 865 T5 HK     | 60 °C                |
| 929002420908 | MAS LEDtube 1200mm HE 16.5W 830 T5    | 70 °C                |
| 929002421008 | MAS LEDtube 1200mm HE 16.5W 840 T5    | 70 °C                |
| 929002421068 | MAS LEDtube 1200mm HE 16.5W 840 T5 HK | 70 °C                |
| 929002421108 | MAS LEDtube 1200mm HE 16.5W 865 T5    | 70 °C                |
| 929002421168 | MAS LEDtube 1200mm HE 16.5W 865 T5 HK | 70 °C                |

| Order Code   | Full Product Name                     | T-Case Maximum (Nom) |
|--------------|---------------------------------------|----------------------|
| 929002421202 | MAS LEDtube 1500mm HE 20W 830 T5 EU   | 55 °C                |
| 929002421302 | MAS LEDtube 1500mm HE 20W 840 T5 EU   | 55 °C                |
| 929002421402 | MAS LEDtube 1500mm HE 20W 865 T5 EU   | 55 °C                |
| 929003044402 | MAS LEDtube 1200mm HE 16.5W 830 T5 EU | 55 °C                |
| 929003044502 | MAS LEDtube 1200mm HE 16.5W 840 T5 EU | 55 °C                |
| 929003044602 | MAS LEDtube 1200mm HE 16.5W 865 T5 EU | 55 °C                |
| 929003734002 | MAS LEDtube 900mm HE 11.5W 830 T5 EU  | 45 °C                |
| 929003734102 | MAS LEDtube 900mm HE 11.5W 840 T5 EU  | 45 °C                |
| 929003734202 | MAS LEDtube 900mm HE 11.5W 865 T5 EU  | 45 °C                |
| 929003734302 | MAS LEDtube 600mm HO 10.5W 830 T5     | 60 °C                |
| 929003734402 | MAS LEDtube 600mm HO 10.5W 840 T5     | 60 °C                |
| 929003734502 | MAS LEDtube 600mm HO 10.5W 865 T5     | 60 °C                |
| 929003734602 | MAS LEDtube 900mm HO 18.5W 830 T5     | 60 °C                |
| 929003734702 | MAS LEDtube 900mm HO 18.5W 840 T5     | 60 °C                |
| 929003734802 | MAS LEDtube 900mm HO 18.5W 865 T5     | 60 °C                |
| 929003795402 | MAS LEDtube 600mm HE 7W 830 T5 EU     | 50 °C                |
| 929003795502 | MAS LEDtube 600mm HE 7W 840 T5 EU     | 50 °C                |
| 929003795602 | MAS LEDtube 600mm HE 7W 865 T5 EU     | 50 °C                |

### Approval and Application

| Order Code   | Full Product Name                      | Ambient temperature | Energy                 |
|--------------|--|---------------------|------------------------|
|              |  | range               | Consumption kWh/1000 h |
| 929001908502 | MAS LEDtube 1200mm<br>HO 26W 830 T5    | -20 to +45 °C       | 26 kWh                 |
| 929001908508 | MAS LEDtube 1200mm<br>HO 26W 830 T5 HK | -20 to +45 °C       | -                      |
| 929001908602 | MAS LEDtube 1200mm<br>HO 26W 840 T5    | -20 to +45 °C       | 26 kWh                 |

| Order Code   | Full Product Name                      | Ambient temperature | Energy                 |
|--------------|--|---------------------|------------------------|
|              |  | range               | Consumption kWh/1000 h |
| 929001908608 | MAS LEDtube 1200mm<br>HO 26W 840 T5 HK | -20 to +45 °C       | -                      |
| 929001908702 | MAS LEDtube 1200mm<br>HO 26W 865 T5    | -20 to +45 °C       | 26 kWh                 |
| 929001908802 | MAS LEDtube 1500mm<br>HO 26W 830 T5    | -20 to +45 °C       | 26 kWh                 |

# MASTER LED tube Mains T5

| Order Code   | Full Product Name                     | Ambient temperature range | Energy Consumption kWh/1000 h |
|--------------|---------------------------------------|---------------------------|-------------------------------|
| 929001908902 | MAS LEDtube 1500mm HO 26W 840 T5      | -20 to +45 °C             | 26 kWh                        |
| 929001909002 | MAS LEDtube 1500mm HO 26W 865 T5      | -20 to +45 °C             | 26 kWh                        |
| 929002420608 | MAS LEDtube 600mm HE 8W 830 T5        | -20 °C to 45 °C           | 8 kWh                         |
| 929002420708 | MAS LEDtube 600mm HE 8W 840 T5        | -20 °C to 45 °C           | 8 kWh                         |
| 929002420768 | MAS LEDtube 600mm HE 8W 840 T5 HK     | -20 to +45 °C             | -                             |
| 929002420808 | MAS LEDtube 600mm HE 8W 865 T5        | -20 °C to 45 °C           | 8 kWh                         |
| 929002420868 | MAS LEDtube 600mm HE 8W 865 T5 HK     | -20 to +45 °C             | -                             |
| 929002420908 | MAS LEDtube 1200mm HE 16.5W 830 T5    | -20 °C to 45 °C           | 17 kWh                        |
| 929002421008 | MAS LEDtube 1200mm HE 16.5W 840 T5    | -20 °C to 45 °C           | 17 kWh                        |
| 929002421068 | MAS LEDtube 1200mm HE 16.5W 840 T5 HK | -20 to +45 °C             | -                             |
| 929002421108 | MAS LEDtube 1200mm HE 16.5W 865 T5    | -20 °C to 45 °C           | 17 kWh                        |
| 929002421168 | MAS LEDtube 1200mm HE 16.5W 865 T5 HK | -20 to +45 °C             | -                             |
| 929002421202 | MAS LEDtube 1500mm HE 20W 830 T5 EU   | -20 to +45 °C             | 20 kWh                        |
| 929002421302 | MAS LEDtube 1500mm HE 20W 840 T5 EU   | -20 to +45 °C             | 20 kWh                        |
| 929002421402 | MAS LEDtube 1500mm HE 20W 865 T5 EU   | -20 to +45 °C             | 20 kWh                        |
| 929003044402 | MAS LEDtube 1200mm HE 16.5W 830 T5 EU | -20 to +45 °C             | 17 kWh                        |
| 929003044502 | MAS LEDtube 1200mm HE 16.5W 840 T5 EU | -20 to +45 °C             | 17 kWh                        |
| 929003044602 | MAS LEDtube 1200mm HE 16.5W 865 T5 EU | -20 to +45 °C             | 17 kWh                        |
| 929003734002 | MAS LEDtube 900mm HE 11.5W 830 T5 EU  | -20 to +45 °C             | 12 kWh                        |
| 929003734102 | MAS LEDtube 900mm HE 11.5W 840 T5 EU  | -20 to +45 °C             | 12 kWh                        |
| 929003734202 | MAS LEDtube 900mm HE 11.5W 865 T5 EU  | -20 to +45 °C             | 12 kWh                        |
| 929003734302 | MAS LEDtube 600mm HO 10.5W 830 T5     | -20 to +45 °C             | 11 kWh                        |
| 929003734402 | MAS LEDtube 600mm HO 10.5W 840 T5     | -20 to +45 °C             | 11 kWh                        |
| 929003734502 | MAS LEDtube 600mm HO 10.5W 865 T5     | -20 to +45 °C             | 11 kWh                        |
| 929003734602 | MAS LEDtube 900mm HO 18.5W 830 T5     | -20 to +45 °C             | 19 kWh                        |

| Order Code   | Full Product Name                 | Ambient temperature range | Energy Consumption kWh/1000 h |
|--------------|-----------------------------------|---------------------------|-------------------------------|
| 929003734702 | MAS LEDtube 900mm HO 18.5W 840 T5 | -20 to +45 °C             | 19 kWh                        |
| 929003734802 | MAS LEDtube 900mm HO 18.5W 865 T5 | -20 to +45 °C             | 19 kWh                        |
| 929003795402 | MAS LEDtube 600mm HE 7W 830 T5 EU | -20 to +45 °C             | 7 kWh                         |
| 929003795502 | MAS LEDtube 600mm HE 7W 840 T5 EU | -20 to +45 °C             | 7 kWh                         |
| 929003795602 | MAS LEDtube 600mm HE 7W 865 T5 EU | -20 to +45 °C             | 7 kWh                         |

